

**SPECIAL
MANAGER &
TECHNICIAN
SUPPLEMENT**

FLEET **Maintenance**

Best Practice Maintenance Management

TOOLS & EQUIPMENT

» A REFERENCE GUIDE TO
GETTING THE MOST OUT OF
AN INVESTMENT IN TOOLS,
TOOL STORAGE SOLUTIONS
AND SHOP EQUIPMENT

» INCLUDES CHECKLISTS
OF KEY PURCHASING
CONSIDERATIONS

Tech Routing List ☐ ☐ ☐ ☐ ☐ ☐

CYGNUS
BUSINESS MEDIA



THE DIFFERENCE



ALL OF OUR PRODUCTS ARE

BUILT TO

DESIGNED, MANUFACTURED, AND TESTED

KEEP YOU

IN THE USA TO ENSURE THE HIGHEST

WORKING

QUALITY PROFESSIONAL SHOP EQUIPMENT



Buy Factory Direct | GRAYUSA.COM | 800-821-7320

VehicleServicePros.com/10094277



INNOVATING THE TOOLS YOU REACH FOR



6918

**REMOVE FORD 3-VALVE
SPARK PLUGS WITHOUT
BREAKING**

7302

**BE FASTER ON BRAKE
JOBS WITH CALIPER
PIN/BOLT REMOVERS**



5950A

**CRIMP, STRIP AND CUT
ALMOST ANYWHERE WITH
THESE ANGLED PLIERS**



5961

**CLEAN OIL CHANGE
MEETS NEVER-LOST
DRAIN PLUG**



VehicleServicePros.com/10094099

otctools.com

QUESTIONS?
800 533 6127



By David A. Kolman, Editor



Tools & Equipment Special

TABLE OF CONTENTS

- 6 **SECTION 1:**
DIAGNOSTIC TOOLS
- 8 **SECTION 2:**
AUTOMOTIVE SPECIALTY
TOOLS
- 10 **SECTION 3:**
NON-POWERED HAND
TOOLS
- 12 **SECTION 4:**
POWER AND PNEUMATIC
TOOLS
- 14 **SECTION 5:**
TOOL STORAGE SOLUTIONS
- 17 **SECTION 6:**
SHOP EQUIPMENT

A reference guide to getting the most out of an investment in tools, tool storage solutions and shop equipment

Having the appropriate tools, tool storage solutions and shop equipment is critical to helping maintenance shops and technicians save time, produce superior work and boost shop productivity. This, in turn, lessens callbacks and rework, plus decreases vehicle downtime for improved fleet productivity.

The end result: reduced operating costs for shops, fleets and customers.

The key to achieving this is having and using the appropriate tools, tool storage solutions and equipment that are well-designed for the work that needs to be accomplished. Manufacturers design tools/equipment for specific applications

and they should be used only for those intended purposes.

When a shop/technician does not have the necessary tools/shop equipment, and the wrong tool/equipment is used instead, vehicle maintenance and repair can be frustrating, as well as inefficient. The wrong tool/equipment is less effective for its intended use.

Moreover, the work can be dangerous for technicians, perhaps causing an injury. The tool/equipment and/or the piece being worked upon could be damaged.

This increases the risks for accidents. Accidents cause downtime and that impacts job and shop productivity.

Cover photo courtesy of Rush Enterprises.



When tools and shop equipment are not properly organized and easy to find, technician and shop productivity is negatively impacted.

Photo courtesy of DK Communications

HIGH QUALITY

A best practice is to invest in superior quality tools/equipment. This increases their longevity, makes the technician's job safer and easier and improves the quality of the work being done.

For tools/equipment that are used frequently, look for ergonomic features.

SAFETY

Even when a shop has the appropriate tools and shop equipment, its technicians need to understand the importance of the choice and use of tools/equipment to do a particular job safely. That includes using the appropriate personal protective equipment (PPE), staying current on safety techniques and following safe operating practices.

Shop managers know that there are occasions when technicians feel that

VEHICLESERVICEPROS

Visit VehicleServicePros.com for reviews of a wide range of tools and equipment. Here are a few:

- **Guardair Corp. Lazer Series Safety Air Guns** – VehicleServicePros.com/11429359
- **Ingersoll Rand W5330 3/8" 20V Right Angle Impactool** – VehicleServicePros.com/12012365
- **Kafko Oil Eater product line** – VehicleServicePros.com/11294823
- **OTC Drain Plug Pro Kit** – VehicleServicePros.com/12011876
- **ToolLodge Tool Drawer Organizer** – VehicleServicePros.com/11588485

taking the time to get the proper tool to complete a job will slow down their work, or technicians figure that it doesn't hurt to improvise with a tool/equipment once in a while.

Therefore, it is advisable for shop managers to regularly remind their technicians that improvising with the wrong tool/equipment can result in poor quality work, leading to callbacks/rework. Worse, injuries and property damage can occur when a technician is in a hurry and substitutes what is convenient for the proper tool.

MAINTENANCE

Not to be overlooked is the importance of regularly inspecting, maintaining and servicing tools and shop equipment to keep them in good, safe and reliable working condition. This helps them last as long as possible.

Tools/equipment should be routinely inspected for any defects and/or safety problems and corrected before they become a serious hazard.

A faulty tool should never be used. It needs to be taken out of service until it has been repaired.

Another element to extending the useful life and getting the most return on an investment in tools and shop equipment, as well as tool storage solu-

tions, is habitual cleaning. This also helps to maintain a productive working environment.

STORAGE

Proper organization and storage of tools and shop equipment is also essential to helping them remain in good condition for a long time. Additionally, technician and shop productivity is increased because when tools/equipment are easy to find, available and ready to use when needed, time is not lost looking for them.

Moreover, costs are reduced because tools/equipment are less likely to be lost, damaged or stolen and will not have to be replaced.

A best practice is to have suitable fixtures with marked locations to provide orderly arrangement of tools/equipment. Technicians need to be reminded to return tools/equipment promptly after use, as this reduces the chance of their being misplaced or lost.

Plus, their doing so can help prevent accidents because if the tools/equipment are left or placed in an incorrect area, there is a possibility that someone could slip or trip over them.

To summarize, the best return on investment in tools, tool storage solutions and shop equipment comes from:

- Choosing the appropriate ones.
- Making sure they remain in safe, reliable condition.
- Using them only for their intended purposes.
- Properly maintaining them.
- Storing them safely.

No shop or technician can hope to be successful and prosper without accomplishing these objectives. This *Tool & Equipment Special* is intended to assist with this.

This Special contains the latest tools, tool storage solutions and shop equipment for automotive repair. There is also insightful information, along with purchasing considerations, intended to help with making the wisest acquisition decisions to meet a shop's particular needs.

Be sure to share this resource with your technicians. **FMX**



There is a wide array of automotive diagnostic tools that “plug” into a vehicle to speed the process of diagnosing and identifying issues and fault codes.

Photo courtesy of iStock

Diagnostic tools

By David A. Kolman, Editor

The growing complexity of automotive systems, along with the incorporation of more and more electronics, has made vehicle diagnostic tools indispensable for any shop and vehicle technician. These tools are a necessity for accurately troubleshooting issues on virtually any vehicle system that has electronic controls.

Because there are so many different types of diagnostic tools, it is challenging to select the most appropriate one.

CHECKLIST

General key purchasing considerations:

- What do you need or want the tool to do?
- Is the tool going to be used for one vehicle brand, or is it going to be used for a broad range of vehicle makes?
- How detailed do you want the information to be?
- Ease of use.
- Tablet, hand-held or PC-based tool.
- Physical shape and size; screen size.
- On-board memory capacity.
- Wireless vs. cables.
- Functionality/capabilities.
- Expandability/upgradeability.
- Quality.
- Warranty/guaranty.
- Training resources.
- Technical support.
- Brand reputation.
- Budget range/price. **FMX**



MULTI-SYSTEM DIAGNOSTICS TOOL

The **Cojali USA 15.1** software update of the **Jaltest Multibrand Diagnostics tool** for commercial vehicles provides Jaltest users further functionalities, new makes, more systems and additional technical information. Some of the innovations presented in the 15.1 release include additional features, coverage and diagnostics systems, new technical information, improved ‘Vehicle System Scan’ (VSS) and connection times, new VSS for Volvo/Mack HD-OBV vehicles, and an advanced GRP Synchro Module. The 15.1 Jaltest version adds nine new brands, 156 models, 1,302 systems, 2,664 functionalities and over 12,000 new fault codes. Jaltest technical information provides 8,186 new technical data, around 2,000 new troubleshooting guides by fault codes and over 6,000 troubleshooting guides by symptoms.

VehicleServicePros.com/10943556



INCLUDES FIVE RELAY ADAPTERS

The **Electronic Specialties Diagnostic Relay Buddy 12/24 Pro Test Kit**, No. 193, includes five relay adapters, Diagnostic Relay Buddy 12/24 tester and a blow mold case. Three adapters test shielded relays; the other two test two new relay types commonly used on fuel pumps and other powered devices. A good test result is displayed as a green light. If the relay fails, one of three programmed diagnostic codes will flash the red LED. It uses the vehicle's battery for its power source.

VehicleServicePros.com/12034774



COVERAGE FOR GASOLINE AND DIESEL ENGINES

The **CanDo HD Code Plus CAT**, No. HD CODEPCAT, is a code scanner with coverage for Class 4 to Class 8 heavy duty trucks, including J1587, J1708 and J1939 protocols for engine, ABS and transmission. It comes with a Caterpillar-specific connector and software, and offers OBDII, EOBD and CAN coverage for gasoline and diesel engines.

VehicleServicePros.com/12037250



ADHERES TO INDUSTRY COMMUNICATION STANDARD RP1210

Esitronic Truck, from **Bosch**, is a heavy duty (HD) truck scan that covers all major heavy duty truck, medium duty truck, engine, transmission, and brake system combinations with diagnostics and embedded repair information. It runs parameter resets, conduct bidirectional diagnostics and engine adjustments. The tool also includes wiring diagrams, component information, electrical specification and step-by-step troubleshooting for common causes on error codes. Adhering to industry communication standard RP1210, the tool will read and clear codes, perform calibrations, track service schedules, read data streams and component technical data.

VehicleServicePros.com/12046892



ENHANCED ADAPTER

The **NEXIQ Technologies USB-Link 2 vehicle interface adapter** has more memory and more speed than its predecessor, is designed to be both dependable and rugged, and is five times faster and supports heavier bus loads on simultaneous channels. The USB-Link 2 also includes a new Bluetooth module with an enhanced data rate to support wireless communication (500K b/s J1939). The USB connector has been upgraded to an automotive-grade connector that features a latching mechanism.

VehicleServicePros.com/12031336



HIGH-PRESSURE DIAGNOSTIC LEAK DETECTION FOR HD APPLICATIONS

The **Redline Detection HD PowerSmoke** diagnostic leak detector can deliver variable pressure, high-density vapor that is free of dyes and other contaminants, through the 20 psi range. This technology replicates the full load of a heavy duty engine so the entire system can be safely tested for faults with the engine off. In a single procedure, it can detect any high-pressure leak, pinpoint its location and identify failing components. It runs on compressed air, is powered by 110-250V AC or 12V DC, and performs decay/leak down tests.

VehicleServicePros.com/11376595

NOW YOU CanDo Diagnostics WITH CONFIDENCE.



HD PRO

The HDPro Outperforms the competition by allowing the technician to properly diagnose Heavy Duty trucks without the need for other scan tools or OEM specific software.

OEM Level functionality without the costly subscription

Special functions include OEM level regenerations, injector coding, injector cut-off, DPF reset and more!

Diesel Hybrid Access

View & Graph Live Data

Software R&D done in N/S America and Globally

Larger 8" high-resolution touch screen with built-in thermal printer

1 year free updates.

CanDo
INTERNATIONAL, INC.
www.candointl.com

VehicleServicePros.com/11078899



Particular tasks can be accomplished easily and quickly when the appropriate, well-designed specialty tool is used.

Photo courtesy of Polar Corporation

Automotive specialty tools

By David A. Kolman, Editor

As vehicles have become more advanced and high tech, the need for automotive specialty tools has grown as well. Such tools have become a necessity in order to handle the increasing complex, challenging and specialized repair and service requirements.

SERVICE LATE 2004 TO PRESENT GM TRUCKS

The **Schley Duramax Turbo Vane Position Sensor Socket**, No. 12400, is designed to remove the turbo vane position sensor on late 2004 to present GM medium duty trucks with Duramax engines. It also works on light duty trucks and Isuzu diesel F series medium duty trucks. This tool has an integrated wire and connector, avoiding possible damage from using an open end wrench or not being able to gain access with a box end wrench, socket or line wrenches that are too bulky for the tight space.

VehicleServicePros.com/10987875



ADJUST CAM TIMING

The **OTC Ford Master Cam Tool Kit**, No. 6690, enables users to adjust cam timing on any Ford car or truck that has a timing chain or belt. This 40-pc kit covers L4, V6, V8 and V10 engines with 2V, 3V, 4V valve configurations, model years 1991 to present. Included are an application guide with diagrams that call out different adaptors. The kit also includes a blow mold case.

VehicleServicePros.com/12028431



What's more, new vehicle and component designs often make it difficult for technicians to access, remove or install parts and components with general tools.

Such tasks can be accomplished much easier, quicker and with less effort when the appropriate, well-designed specialty tool is used. This helps make the technician more efficient and effective at accomplishing the job, plus it adds to the life of the tool.

In addition to saving time, money and technician effort, by employing the suitable specialty tool, technicians are less likely to damage something during the job or suffer an injury. As has been noted previously, here again, should an accident occur, the result is technician and shop downtime.

CHECKLIST

General key purchasing considerations:

- Design of the tool, including style, size, weight, etc.
- Ergonomics.
- Quality.
- Warranty/guaranty.
- Training resources.
- Product support.
- Brand reputation.
- Training resources.
- Budget range/price. **FMX**

VEHICLESERVICEPROS.com

Visit VehicleServicePros.com/ directory for additional information on specialty tools.



ENHANCE WORN AXLE EYES

The **STEMCO Kaiser Axle Pro Equipment** (APE) has mounting brackets, a magnetic based drill, coolant and safety equipment needed to enhance worn axle eyes. This tool allows users to re-size axle eyes in minutes. Included are pre-sized, pre-cut hardened sleeves for each axle, a travel case and more.

VehicleServicePros.com/12038103



WITH BUILT-IN RETRACTABLE VALVE-STEM WRENCH

The **Mayhew Tools Quiet Tire Deflator**, No. 45057, features a filter cartridge that reduces noise level from an ear-damaging 115 db to a permissible 85 db. It features a built-in retractable valve-stem wrench. The tool does not increase tire deflation time. Patented technology protects not only the user, but also the people around it, according to the company.

VehicleServicePros.com/12001912



SUPPORTS UP TO 100 LBS

The **Ansik ShockLock** is a heavy duty mechanical safety device designed to support failed gas struts found in vehicle hatches. The tool provides a non-invasive way to support the hatch, and can support up to 100 lbs. The lock, which can be installed with one hand, is capable of preventing accidents caused by a hatch falling while a technician is working under the hood. According to the company, the product performs better than pliers and prop-rods by clamping around any new or old gas strut.

VehicleServicePros.com/12042479

TIGER TOOL

Have What It Takes



The **Tiger Tool original U-Joint Puller** provides brute strength for disassembling seized U-joints in minutes on virtually all Class 7 and 8 trucks and machinery.

Have you got what it takes? Come see us at Booth 11256 to find out.

10102



Hydraulic Wheel Stud Service Kit

Remove and install ten wheel studs in less than 15 minutes.

10608

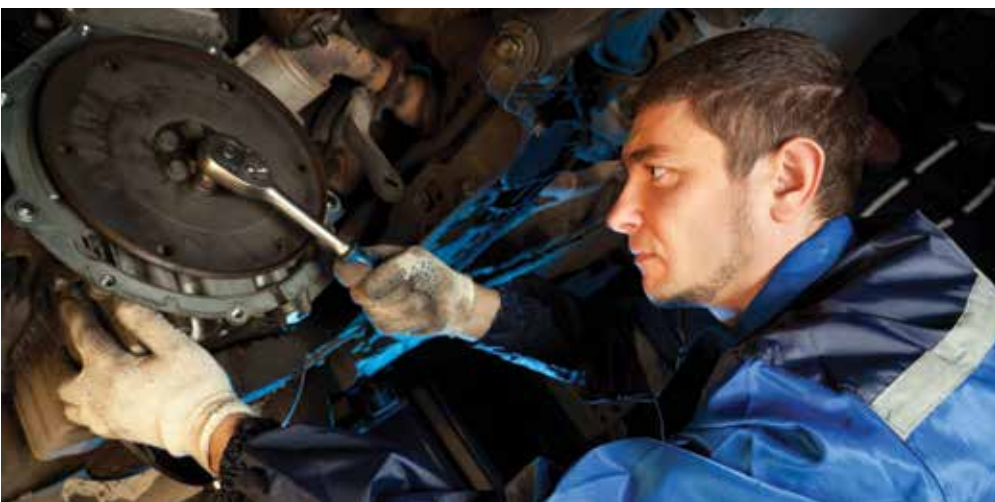


Heavy Duty Yoke Puller

Generates over 25,000 lbs of pulling power.

10803





Many of today's on-the-job injuries result from the improper use of hand tools, unsafe practices and/or the use of tools that are poorly designed or of inferior quality.

Photo courtesy of iStock

Non-powered hand tools

By David A. Kolman, Editor

There is such an extensive assortment and variety of non-powered hand tools because each is designed for specific functions. It is important, therefore, to select the appropriate hand tool for the task and to use it properly. Not doing so can result in lost productivity from slower work and more errors.

Using the wrong tool also increases the risk associated with its use.

A best practice is to select well-designed, high-quality hand tools. These will make the technician's job safer and easier, improve the quality of the work being done and help extend

the life of the tool.

It is imperative that hand tools be kept in optimum condition. In addition to compromising safety, tools that are in poor or worn condition also increase

the effort needed to use them.

Damaged tools should never be used. They should be repaired or replaced immediately.

UNSAFE PRACTICES

While it is generally assumed that technicians know how to use hand tools, accidents from using them are a significant cause of workplace injuries. Many of today's on-the-job injuries result from the improper use of hand tools, unsafe practices and/or the use of tools that are poorly designed or of inferior quality.

Estimates are that hand tool mishaps are responsible for about one out of 12 compensable workplace injuries. These accidents cause downtime, and that impacts the job and shop productivity.

Plus, depending on the injury, a technician may not be able to do his job.

As with other tools, when using hand tools, technicians should always wear the PPE required for the job.

CHECKLIST

General key purchasing considerations:

- Tool design, including style, size, weight, etc. Tool shape directly impacts hand tool performance.
- Ergonomics. How well does the tool fit the hand? Can it be used in a comfortable work position without causing awkward postures, harmful contact pressures or other safety and health risks? Do the balance and the weight feel right? How easy is it to operate?
- Quality.
- Warranty/guaranty.
- Product support.
- Brand reputation.
- Budget range/price. **FMX**

ADJUSTABLE HANDLES

The **Rennsteig**

Ratcheting Action Cable Shears, No. D38, are designed for cutting single-strand, multi-strand, fine-wire aluminum and copper cables. These ratchet action shears feature a replaceable cutting head, forged cutting head and high-strength aluminum tube arms. The two-component handles can be adjusted based on working conditions from 15-1/2" to 23-1/2".

VehicleServicePros.com/11309391



OVERSIZED STEEL SURFACE FOR STRIKING

The **Beta Tool**
Striking Slotted

Screwdriver, No. 1241, has an ergonomic handle designed to be struck with a hammer. The steel from its hexagon-shaped shank continues through the handle to the end, where there is an oversized steel surface for striking. The handle is shaped specifically to prevent it from rolling off the surface where it is set. This screwdriver comes in four sizes, ranging from 8" to 13" lengths.

VehicleServicePros.com/12037155



OFFSET DESIGN FOR BETTER HAND ALIGNMENT

The **Lang Tools Universal 6-in-1 Fan Clutch Wrench** combines the six most commonly used wrench sizes into one double-ended wrench. The offset design provides better hand alignment and a clear line of sight, while improving accessibility in tight fan clutch areas. Two square drives allow for use with a breaker bar for added torque or length. Sizes included are 22mm, 23mm, 36mm, 40mm, 48mm and 50mm. This patented tool is designed, engineered and manufactured in the U.S.A.

VehicleServicePros.com/11612265

FOR CUTTING COPPER AND ALUMINUM

The **K-Tool International KT152009 Heavy Duty Cable Cutters** assist technicians in cutting copper and aluminum. With a length of 9-1/4", these cutters feature a jaw opening up to approximately 2". These cutters are not recommended for use on steel wire or ACSR cable. This tool comes with a lifetime warranty.

VehicleServicePros.com/11621476

DUAL TPR AND CHROME HANDLE

The **Steelman PRO Cobra Series 160 Tooth Ratchets** have a fine tooth count for working in tight spaces and only require a 2.25-degree swing to move the ratchet drive. The ergonomic grip ratchets are available in 1/4", 3/8" and 1/2" drive sizes. A 2-pc set with 1/4" and 3/8" drives, and a 3-pc set with 1/4", 3/8" and 1/2" drives are also offered.

VehicleServicePros.com/12003866

INCLUDES A CUTTER, STRIPPER AND CRIMPER

The **Titan Tool 3-pc Mini Electrical Tool Set, No. 11476**, includes a cutter, stripper and crimper, all well-suited for hard-to-reach applications. The overall length of each tool is 5-1/2".

VehicleServicePros.com/11575089

REQUIRES LESS LEVERAGE WHEN CUTTING

The **KNIPLEX CoBolt Mini Bolt Cutters** are an upgraded heavy duty cutting tool with laser-etched cutting edges to grip round objects better than before, while keeping the object closer to the pivot point, requiring less leverage when cutting.

VehicleServicePros.com/12022403

LANG TOOLS
Professional Tools For **4 Generations**

CAT IV WIRELESS CLAMP

Wireless voltage and current measurements

13810:

The **CAT IV Wireless Clamp** enables you to read the measurements from a distance in order to stay safe while working and it allows you the flexibility to get more done on your own.



- **Options for Bluetooth**
 - Bluetooth to either Android or iOS devices with 30' range
- **Multiple measurement options**
 - Test leads for AC or DC volts to monitor voltage level or drops while vehicle is running
 - Standard AC/DC current clamp for starter, alternator, or other higher current measurements to 400A
 - Low current AC/DC milliamp clamp for parasitic or other low current measurements with mA resolution
- **Additional benefits of mobile device app**
 - View trends graphically in real time
 - Record thousands of data points (limited by device memory), and then save or e-mail data in .CSV format

Like Us On
Facebook:
A & E TOOLS



WWW.LANGTOOLS.COM

VehicleServicePros.com/10094372



Considerations for choosing power and pneumatic tools ought to include looking for features that will make the tool easier and safer to use.

Photo courtesy of Goodyear

Power and pneumatic tools

By David A. Kolman, Editor

There is a wide variety of power and pneumatic (powered by compressed air) tools available, each intended for particular work. Consequently, selecting the appropriate tool requires careful deliberation. Regardless of the type of tool to be acquired, it is wise to look for features that will suit vehicle repair and maintenance needs, plus make the tool easier and safer to use.

Technicians need to understand that the speed generated by the air pressure of a pneumatic (air) tool can present safety concerns. Like any tool, these should only be used for their intended purpose, and technicians need to have a proper understanding of the operation of the tool and follow all manufacturers' warnings.

Shields, guards or other safety devices never should be removed from a tool and the appropriate PPE always should be worn.

It is estimated that power tool injuries account for as many as 400,000 annual emergency room visits, according to the Occupational Safety and Health Administration (OSHA).

CHECKLIST

General key purchasing considerations:

- Style, size and weight.
- Portability.
- How much power/torque is required?
- Is there a need for variable speed control?
- Corded or cordless (for power tools).
- For cordless tools, what type of battery is included? Battery type determines how long the battery provides power and how much time is required for recharging.
- For pneumatic tools, keep in mind that every air tool has an operational compressed air requirement – measured in cubic feet per minute (cfm) – and every air compressor has a maximum cfm output. The air compressor's cfm output must be greater than the cfm requirement to keep all the pneumatic tools in the shop operating efficiently.
- Power trigger type.
- Handle shape, size, length, material, etc.
- Ergonomics. Does the tool have features that increase worker performance and productivity while reducing discomfort, fatigue and risk of injury?
- Noise level.
- Vibration.
- Safety features.
- Accessories.
- Quality.
- Warranty/guaranty.
- Product support.
- Brand reputation.
- Budget range/price. **FMX**

VEHICLESERVICEPROS

Visit *Fleet Maintenance's* Online Product Guide at VehicleServicePros.com/directory for additional information on power and pneumatic tools.



INCLUDES LOW-PROFILE SOCKETS

The **Spec Tools Powerbox**, No. PBS1420, is a wrench attachment that converts 1/4" air or cordless ratchets to a low-profile box wrench output. The head fits most 1/4" power ratchets with necks up to 1" diameter with a 1-1/2" minimum length. The tool can be used to get into hard-to-reach areas, including over long-ended bolts, and for power driving pass-through type sockets available in many manual kits on the market. The Powerbox includes a set of low-profile sockets.

VehicleServicePros.com/11615808



1,770 FT/LBS OF TORQUE IN REVERSE

The **Chicago Pneumatic 1" metal pneumatic impact wrench**, No. CP7776/CP7776-6, with its easy-to-hold pistol-style handle, is intended for tire changing on heavy duty vehicles. It delivers 1,770 ft/lbs of torque in reverse. The ergonomic forward/reverse regulator with three-position power settings and a full-teasing trigger make the wrench user-friendly. Additional features include a TPR grip, a rotating side handle and an angled-down exhaust that blows air away from the operator.

VehicleServicePros.com/12017499



12V MAX LI-ION KIT

The **Makita 4-pc Combo Kit**, No. LCT401W, includes the 3/8" Impact Wrench, No. WT01Z, with 74 ft/lbs of torque; the 1/4" Impact Driver, No. DT01Z, with 800 in/lbs of torque; the 3/8" Adjustable Clutch Driver Drill, No. FD02Z; and an LED Flashlight, No. LM01W. Two Li-ion Batteries and a battery charger are included. The tools in the kit have a three-year warranty. The batteries, charger and light have a one-year warranty. This kit comes in a tote bag.

VehicleServicePros.com/11651342



INSTANT FORWARD/REVERSE POWER CHANGE

The **Florida Pneumatic AIRCAT Pneumatic Impact Wrench Series**, feature a low-weight composite housing, refined twin-hammer mechanism to increase blow frequency and reduce wear, a rear push button for forward/reverse one-handed operation, a titanium finish hammer case and molded-in buffers to protect the tools from side impact. This series is offered in three sizes: 3/8" drive (No. 1350-XL), 1/2" drive (No. 1275-XL) and 3/4" drive (No. 1770-XL). The 1350-XL and 1275-XL have a patented high/low torque switch over the trigger for instant power change in both forward and reverse.

VehicleServicePros.com/12033706



800 FT/LBS REVERSE TORQUE

The **Campbell Hausfeld FTC-60** impact wrench with impact control technology provides a fixed torque of 60 ft/lbs in the forward direction and full reverse torque of 800 ft/lbs. It offers protection against lug and wheel hub damage common to over-tightening lug nuts. The company says the FTC-60 uses less air than standard air motors, causing less compressor run-time and longer tool life, and it weighs up to 1.5 lbs less than standard impact wrenches.

VehicleServicePros.com/12022859



CONSTRUCTED WITH A TITANIUM HAMMERCASE

With 1,350 ft/lbs of torque, 930 ft/lbs of maximum reverse torque and a weight of only 4.6 lbs, the **Ingersoll Rand 2235 Series Impactool** is constructed with a titanium hammercase, steel-wear plate and composite housing that protects it from the tough environments. To ensure top performance, every component, mechanism and function of the tool has been tested, the company says. It is backed by a two-year warranty.

VehicleServicePros.com/12001683



When tools and equipment are properly organized and easy to find, technicians don't waste time looking for them.

Photo courtesy of iStock

Tool storage solutions

By David A. Kolman, Editor

The manner in which tools and equipment are organized and stored has an impact on both technician and shop productivity. Time is wasted if tools and equipment are not well organized, available and readily accessible when required. The time that technicians spend off a job when searching for a lost tool, or a tool required to complete a job, can add up quickly in reduced efficiency and increased cost.

Moreover, keeping tools organized helps a shop/technician keep track of tools. If a technician forgets to replace a tool after finishing a job, the empty space for the missing tool will be obvious.

Good organization and storage can also save space within a shop, plus it can

help keep tools in proper working order for a longer time. When left scattered, tools and equipment are susceptible to getting dinged or damaged and could be the cause of an accident.

What's more, lost tools and equipment are expensive to replace and could result in a job being delayed.

BEST PRACTICES

Here are tool storage recommendations:

- Make sure tools are stored so that they won't get damaged.
- Store tools to protect against possible accidental contact with any sharp or pointed edges.
- Organize tools so that those most frequently used are the easiest to access.
- Be certain that any tools placed on overhead storage shelves/racks won't topple off.
- Be aware that some specialty tools may require unusual storage.

CHECKLIST

General key purchasing considerations:

- Needed storage capacity.
- Size, storage volume/spaciousness, style, configuration, etc.
- Number and size of compartments, trays, etc.
- Organizational options and accessories.
- How are tools and equipment safeguarded – built-in locks, latches designed for padlocks, electronic systems or other secure locking mechanisms?
- Would complete systems for tool and asset monitoring and control be beneficial?
- Construction and material type.
- Strength and durability.
- Color, finish, fit, graphics, etc.
- How well will the storage solution fit in the work space or with existing storage solutions?
- Portable, wheeling or stationary?
- Expandability/upgradeability.
- Quality.
- Warranty/guaranty.
- Product support.
- Brand reputation.
- Budget range/price. **FMX**

VEHICLESERVICEPROS

Visit *Fleet Maintenance's* Online Product Guide at VehicleServicePros.com/directory for additional information on tool storage.



LIGHT, HEAVY AND STANDARD CAPACITY

A-G Body's Universal Drawers come in multiple sizes and configurations, are available in light, heavy and standard capacity drawers, latching systems and powdercoat colors, with sizes tailored to the customer's needs. The company says the drawers use the highest grade of raw materials, hardware and finishes to provide a durable, high-quality product with a lifetime limited warranty

VehicleServicePros.com/11653326



40-LB CAPACITY

The **Sunex Tools Service Cart Side Shelves**, Nos. 8009 and 8009BK, are additions for the 8054 and 8057 service carts. The side shelves have a 40-lb capacity and add-on for more work space in the shop. The collapsible design allows easy storage when not in use, giving users a more compact cart.

VehicleServicePros.com/11598206



FEATURES ROLL-CAGE CONSTRUCTION

The **Waterloo Professional HD Series** line of tool storage products feature roll-cage construction, deep drawers for extra capacity, ball-bearing drawer slides with the patented Posi-Lach system and industrial casters that support 3,500 lbs. Chests and cabinets are available in 36", 46" and 56" widths with drawer ratings of 200 to 400 lbs. Cabinets can be used with or without chests, and side cabinets and lockers can be added for extra storage.

VehicleServicePros.com/12033044



REDUCE STORAGE FOOTPRINT 60 PERCENT

The **Borroughs Corp. Line of Modular Drawer Cabinets** are used where space is at a premium or where businesses need to improve security or parts retrieval times. This line offers shops the ability to reduce their storage footprint by up to 60 percent, according to the company, with the flexibility to attach these cabinets side-to-side, back-to-back or even stacked on top of each other. The cabinets include features like single- and multi-drawer access units, removable locking cores for security and best-in-class drawer suspension.

VehicleServicePros.com/11616807

HIGH PRODUCTION



GB801 HVB POWERUNIT

- REMOTE HYDRAULICS



GB703 SHAVT TOOL

- 2 1/2 POUND TOOL
- INSTALLS 1/8" THRU 3/16" BLIND RIVETS



GB743 SHAVT TOOL

- 2 1/2 POUND TOOL
- INSTALLS 1/8" THRU 1/4" BLIND RIVETS

Tools Available with Pistol Grip (SH) or Inline (SF) Handles

MADE IN THE USA

GAGE BILT

RIVET TOOLS

TOUGH TOOLS FOR TOUGH JOBS

586-226-1500

gagebilt.com

VehicleServicePros.com/10123104



THREE EXTRA-LONG DRAWERS

The **Extreme Tools RX Series 72" 19 Drawer Roller Cabinet**, No. RX722519RC, features three extra-long drawers with a support bar to fit the longest tools, according to the company. The self-latching, quick-release drawer pulls keep drawers from opening when moving the toolbox. Each drawer uses full-extension ball bearing drawer slides that allow users to load 100 to 200 lbs of tools in each drawer.

VehicleServicePros.com/12028544



500-LB CAPACITY

The **Monster Limited Edition Shop Cart**, No. MST3304G, in the exclusive Monster green is a four-drawer shop cart that features bumpers to protect the shop and the vehicles in it. This durable cart has a 500-lb capacity and is made from 1mm solid steel construction. Two locking and two non-locking 5" by 2" heavy duty swivel casters are offered. The lid includes two gas struts for easy up and down. This shop cart weighs 117 lbs, is 39.5" tall by 33.25" long by 20" wide.

VehicleServicePros.com/11621504



12"-DEEP DRAWERS

The **Snap-on 72" Master Series Roll Cab**, No. KRL1163, has a 12"-deep drawer capable of holding eight power tools, using adjustable holders to keep items organized. The extended cab, available in 12 colors, features a 5" drawer that, according to the company, is ideal for vertical socket storage and a 3" drawer for long-handled tools. This product also features the patented Lock-n-Roll latch mechanism, which prevents drawers from drifting open. It includes Iso-Ride Casters, for smooth transportation, and a high-security tubular lock and collar that offer a high resistance to theft and vandalism.

OEM APPROVED

DPF DOWNTIME?

THE FSX ADVANTAGE
THE ONLY SYSTEM WITH:

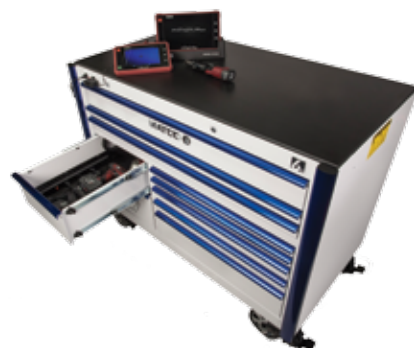
- PATENTED BI-DIRECTIONAL AIR KNIVES
- VISIBLE CLEANING PROCESS
- FILTER DIAGNOSTICS
- ACCURATE TESTING

BENEFIT BY MAINTAINING YOUR DIESEL PARTICULATE FILTER:

- INCREASED FUEL SAVINGS
- MINIMIZED DOWNTIME
- LOWER FILTER REPLACEMENT COSTS
- INCREASED HORSEPOWER

360-691-2999
SALES@FSXINC.COM | WWW.FSXINC.COM
DIESEL PARTICULATE FILTER CLEANING EQUIPMENT

VISIT US AT
THE WORK TRUCK SHOW
BOOTH #2513

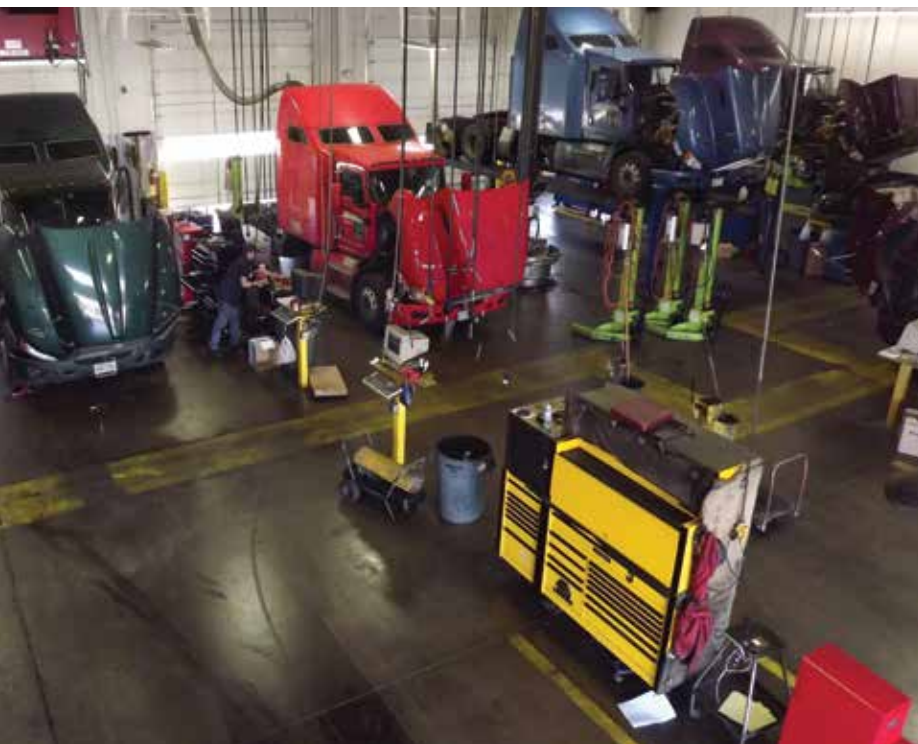


STORAGE WITH USB AND GROUNDED OUTLETS

Matco Power Toolboxes feature exposed USB and grounded outlets in the front, making it easier to plug in tools and personal devices while providing optimal work space on top. A second built-in powerstrip is available inside the power storage drawer. These toolboxes are built to be the complete power storage solution, beginning with an entry-level toolbox continuing through its line of hutches and side lockers, allowing customers to design their own box to fit different spaces and needs. Each Matco toolbox features a T-shaped center shelf that is fully welded to all sides for brute strength and total stability. These boxes come in several color and trim options.

VehicleServicePros.com/12019835

VehicleServicePros.com/10161793



Considerations for acquiring shop equipment ought to include reviewing how current shop equipment has performed and what types of vehicle maintenance and repair work may be added in the future.

Photo courtesy of TransAm Trucking

Shop equipment

By David A. Kolman, Editor

As with tools, choosing the right shop equipment for vehicle repair and service tasks not only can help maximize a technician's productivity, but it enables them to work safer. This contributes to a more efficient shop, with less vehicle downtime, and a better bottom line. If replacing a piece of equipment, it is not wise to simply duplicate the old one. Shop and task requirements may have changed.

Additionally, new and improved products are constantly being introduced that may offer improvements over what had been previously available.

It is judicious to also review how current shop equipment has

performed, being alert for any issues or problems that could be addressed with new purchases. Also, think about what types of vehicle maintenance and repair work might be added in the future.

CHECKLIST

General key purchasing considerations:

- Physical weight.
- Capacity.
- Efficiency, versatility, productivity, etc.
- Safety features.
- Ease of operation.
- Ergonomics.
- Accessories and options.
- Power requirements.
- Maintenance requirements.
- Life cycle.
- Will it fit the available work space?
- Storage considerations.
- Construction quality.
- Warranty/guaranty.
- Training resources.
- Technical support.
- Product support.
- Brand reputation.
- Budget range/price.
- Financing options. **FMX**

VEHICLESERVICEPROS

Visit *Fleet Maintenance's* Online Product Guide at VehicleServicePros.com/directory for additional information on shop equipment.



HANDLES FLOWS FROM 12 TO 159 CFM

The **Kaeser Compressor Kryosec TAH-TCH** series of refrigerated dryers is compatible with rotary compressors up to 40 hp, handles flows from 12 to 159 cfm and provides drying at ambient temperatures up to 122 degrees F. The air-to-air and air-to-refrigerant heat exchangers are combined with the condensate separator in a single assembly to save on space and weight.

VehicleServicePros.com/11617323



WORKING RANGE OF 0" TO 35"

The **Performance Tool 12-ton commercial grade Continuous Force Shop Press**, No. W41062, has a working range of 0" to 35" with a 7" ram travel. Features include a 4" glycerin-filled gauge for easy reading and precision adjustments, and 6-1/2" by 4" arbor plates. Overall height is 65" with a working width of 20".

VehicleServicePros.com/11574165



INCREASES LIFT'S HEIGHT BY 3'

The **Rotary Lift Extended-Height Two-Post Lift**, No. SP012, allows the servicing of high-roof vehicles. The extended-height option increases a lift's overall height by 3'. This lift features a symmetric design that keeps the vehicle's center of gravity directly between the columns for maximum stability. It is equipped with three-stage arms and adjustable frame-contact adapters for reaching a wide range of pick-up points, and its lightweight, aluminum stackable adapter inserts assist setup.

VehicleServicePros.com/12039122

THREE MODELS AVAILABLE

The **Fountain Industries Ecomaster Series 7000** of modular aqueous parts washing systems are available in three models: non-heated model (No. EM7000), heated model (No. EM7020) and heated model with filtration (No. EM7040). All three have a 440-lb capacity working tray and 26-gal soaking capacity; a thermally protected 350 gph pump; a flow-through brush with adjustable fluid control; an adjustable spigot; skimmer pads to soak oil from the reservoir tank; and a stainless steel drain screen. Additional features include easy-to-operate fluid controls, heavy duty stand and full lid.

VehicleServicePros.com/12004326





VT56 MORE THAN JUST ANOTHER TPMS TOOL!

TPMS EASY AS 1-2-3

• COLOR SCREEN & ICON BASED NAVIGATION
• ERGONOMIC KEYPAD
• VIN BARCODE SCANNER
• MULTIPLE AUDIT REPORTS
• OPTIONAL WIRELESS PRINTING WITH DOCK
INTEGRATED PRINTER

**01 SCAN
THE VIN**

**02 TRIGGER
SENSORS**

**03 RELEARN
TPMS**





WWW.ATEQTPM.COM • 888-621-TPMS (8767)

VehicleServicePros.com/10095403

INCLUDES FOUR EXTRACTION TUBES

The **OEM Automotive Tools 21-Gal Oil Drain and Vacuum Evacuator**, No. 24862, collects used motor oil, transmission fluid and coolant from under lift-mounted vehicles. It extracts directly from fluid reservoirs or through dipstick tubes, and it captures fluids with the use of a large funnel or vacuum. The product features an 82" discharge hose and a 15" diameter funnel. The funnel includes a 22" funnel extension adapter, and the funnel height adjusts between 45" and 62". Extraction tubes are included. This product, which requires an external air supply, comes with a limited one-year warranty.

VehicleServicePros.com/12040504



Now Online at **VEHICLESERVICEPROS.com**



Kolman's Korner: VSP News, Episode 73

Learn about Vehicle Lift Safety. Tune in to this exclusive bi-weekly newscast featuring *Fleet Maintenance* Editor David A. Kolman at:
VehicleServicePros.com/12045640

Watch more episodes of Kolman's Korner at VehicleServicePros.com/media-center



FACEBOOK
facebook.com/VehicleServicePros



TWITTER
[@VehicleSvcPros](https://twitter.com/VehicleSvcPros)



LINKEDIN
linkedin.com/company/VehicleServicePros



YOUTUBE
youtube.com/user/VehicleServicePros

Big-Time Boxes



Owner: David Lewis

Shop: Florin Automotive Repair

Location: Sacramento, Calif.

VehicleServicePros.com/12031435

Ask the Expert



What should we consider before buying an A/C service machine for our shop?

VehicleServicePros.com/12004051

Featured Tool Review



SP Air Corp.

Super Fast Mini Impact Ratchet

VehicleServicePros.com/11590853

Featured Video



Watch to learn more about
Matco Diesel Filter Wrenches:

VehicleServicePros.com/12035111

Tech Tip



What to look for when purchasing workstations
To read, visit:

VehicleServicePros.com/12027336

And more!



PRODUCT GUIDE

A resource directory of products, services, tools, shop equipment and much more.



INDUSTRY NEWS

The latest news, developments and trends impacting the industry.



RESOURCE LIBRARY

An information center of reports, whitepapers, reference materials and more.



MULTIPLE SHOP NEEDS. ONE DIAGNOSTIC TOOL

