

TOOLS & SHOP EQUIPMENT

Supplement brought to you by
FleetMaintenance

SPECIAL **MANAGER
& TECHNICIAN**
SUPPLEMENT



Products
*to improve shop
efficiency*

Tools, tool storage and
shop equipment options to
maximize vehicle uptime.

TOP
PURCHASING
CRITERIA

LAUNCH
TECH USA
CREATE • CHANGE



*PAD II NOT INCLUDED

**SIMPLY THE BEST
HD COVERAGE IN
THE AFTERMARKET**

**ADDS ON TO ANY EXISTING
PAD II OR THE NEW THROTTLE**

WWW.LAUNCHTECHUSA.COM

1820 S. MILLIKEN AVE • ONTARIO, CA 91761 • PH : 1-877-528-6249

VehicleServicePros.com/10094390

Products *to improve shop efficiency*

Tools, tool storage and shop equipment options to maximize vehicle uptime.

By David Brierley, Managing Editor

One of the keys to vehicle uptime is shop efficiency. To remain as efficient as possible, technicians performing maintenance and repairs on vehicles need to be able to keep up with advancing vehicle technologies. In addition to proper training, technicians require high-quality and up-to-date tools and equipment.

As technology advances, vehicle systems become more complex. Vehicle service and maintenance is becoming more complicated in areas such as advanced driver assistance systems (ADAS), engine after-treatment and emissions systems, advanced suspension components and more. To provide proper service

and repair, many of these systems require specialized tools and equipment. That's not to mention having adequate tooling and equipment to complete day-to-day tasks in the bay.

But how does a shop decide what tools to purchase? There are countless

options available from different manufacturers, so it's important to consider and compare side-by-side to ensure the tools and equipment purchased are the ones that best fit the shop's needs.

A tool for each task

When purchasing tools, an import-

ant consideration is what tasks technicians at the shop are performing. Providing the right tools for the job is imperative to maintaining an efficient operation, even if it means purchasing specialty tools intended only for a specific task.

It is equally important to ensure the tools and equipment being used are of adequate specification for each application. Ensuring the lift capacity is right for the vehicle classes being serviced, for example, increases technician safety and productivity. Likewise, providing a scan tool capable of not only reading codes but also bi-directional controls may be necessary to successfully diagnose and repair today's more complex vehicle systems.

Quality concerns

Another facet to consider when purchasing tools is quality. Opting for tool brands with a proven track record gives technicians confidence the products they are using are safe and reliable. Lower priced tools may save money in the short term, but purchasing quality tools that will hold up better over time can provide the shop a sound investment.

Quality can especially come into play when selecting cordless and pneumatic power tools. These important products can be costly to purchase, but ultimately provide the backbone to most shop operations. Considering the number of tasks performed with these tools and how frequently they are used each day can help justify the cost of a higher quality product.

Tool care and organization

Maintenance is not reserved only for vehicles; tools and equipment require

care as well. No matter the price point, tools come at a cost. Therefore, it makes sense to take care of that investment to ensure the tools and equipment each shop relies on will last as long as possible. Regular tool cleaning and service, as necessary, should be a part of each shop's routine.

Tools are less useful to a technician if they go missing or are disorganized and difficult to find. Tool storage solutions play an important role by keeping shops' valuable assets safe and well organized. Toolboxes with locks and tool organizers are worthwhile investments to keep tools within arm's reach.

Training and education

Equally as important to having the proper tools, adequate training is imperative to keep technicians up-to-date on the latest technology trends in vehicle maintenance and repair. Learning about the ever-increasing complexity of vehicle systems is important for technicians to be able to perform certain tasks.

Additionally, knowing how to properly and safely use the tools and equipment needed for these tasks is also important for optimal technician performance. Technician training is an ongoing investment, but it's one that will ensure the shop is safe and efficient, and performs quality maintenance and repair work.

Shop efficiency is an important factor in vehicle uptime. An efficient shop consistently keeps the amount of time vehicles are in for maintenance and repairs to a minimum. What makes a shop efficient? Providing technicians with quality tools suited to the task at hand, and consistent training to make sure they operate safely and effectively. ■

Contents

6 Diagnostic Tool Products

14 Power Tool Products

16 Specialty & Hand Tool Products

20 Shop Equipment Products

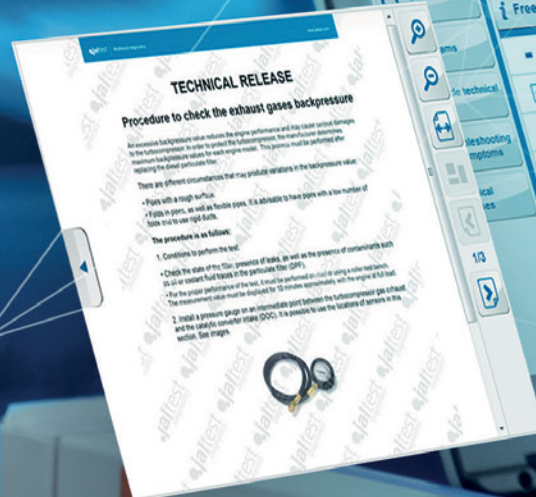
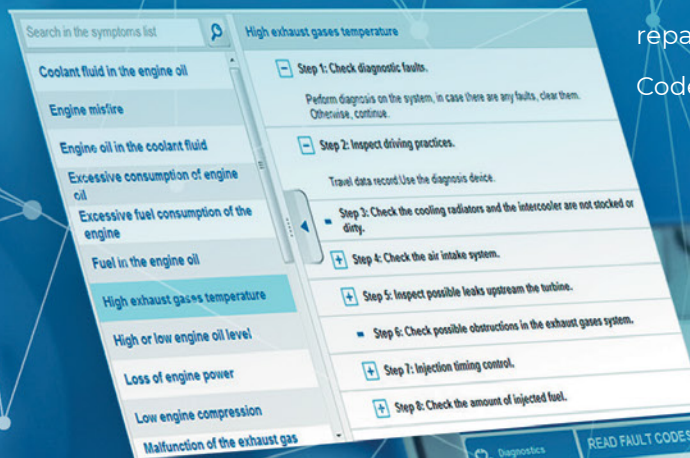
24 Tool Storage Products



JALTEST INFO ONLINE

Troubleshooting by Symptoms

More than 27,955 step-by-step repair guides available to help technicians repair every DTC (Diagnostic Trouble Code) diagnosed in specific systems.



Technical Releases

More than 400 technical bulletins with different procedures in specific systems (Engine, Transmission and Brakes).

THE BEST COMMERCIAL VEHICLE TECHNICAL DATA IN THE MARKET

At the click of a button,
inside your Jaltest Software Tool.

Fault Code Troubleshooting

More than 75,500 step-by-step repair guides
for the most common symptoms in specific
systems (Engine, Transmission and Brakes).



●jaltest
BY COJALI

ELEVATE YOUR SHOP'S GAME,
UPGRADE YOUR BUSINESS.

●cojali
USA

jaltest.com · 800-975-1865 · info@cojaliusa.com

VehicleServicePros.com/10942695

Diagnostic Tool

PURCHASE CONSIDERATIONS

- ✓ Will the tool be used for one vehicle brand or for a range of vehicle makes?
- ✓ Method and frequency of software updates.
- ✓ How detailed do you want the information to be?
- ✓ Ease of use.
- ✓ Tablet, handheld or PC-based tool.
- ✓ Physical shape and size.
- ✓ Touchscreen, and screen size.
- ✓ Onboard memory capacity.
- ✓ Wireless versus cables.
- ✓ Functionality/capabilities.
- ✓ Expandability/upgradeability.
- ✓ Quality.
- ✓ Durability.
- ✓ Warranty.
- ✓ Training resources.
- ✓ Technical support.
- ✓ Brand reputation.
- ✓ Budget range/price.

Instant voltage drop testing

The **Power Probe IV** activates components with battery power and ground for quick functional testing. The large, bright color-LCD screen allows for easy visibility for eight diagnostic testing modes. The Power Probe IV includes a 23' cable. Users can test the resistance of circuits in ohms, read AC/DC and battery source voltage and identify the health of a fuel injector.

For more information visit
VehicleServicePros.com/12010412



Test batteries, starting and charging systems

The **AutoMeter Heavy Duty Truck Handheld Electrical System Analyzer**, No. BCT-460, is an electrical system diagnostic tool that can test batteries, starting and charging systems. This tool includes a preventive maintenance test menu. If the vehicle is not reporting an electrical system problem, the PM test can quickly identify if the battery bank, starter, alternator and cables are in proper working order. If no problems are found, the test can be completed in less than two minutes. If problems are found, the tool will direct the user to appropriate next steps to diagnose and locate the cause of the problem. This tool offers a ruggedized control module with 7" wide viewing angle touchscreen, and is Wi-Fi enabled for automatic data collection. The BCT-460 includes 20' external volt leads, charger for internal battery, stud mount battery adapters, starter adapters and quick start guide.

For more information visit VehicleServicePros.com/21044624



SAE 1708, 1939 and OBD generic protocol supported

The **Cojali Jaltest RP1210** standard functionality allows users to utilize the Jaltest Communication Interface hardware with the manufacturer's software. The tool is SAE 1708, SAE 1939 and OBD generic protocol supported. Upgrades to the Commercial Vehicle Kit can be done through the same VCI, allowing the tool to evolve based on the customers needs. The user-friendly interface allows entry level technicians to get into diagnostics and then go into full bidirectional controls through the upgrade. The kit includes all the necessary connectors and the software in the kit.

For more information visit
VehicleServicePros.com/21000853



Repair guidance solutions

Noregon NextStep is a troubleshooting and repair guidance solution available as an add-on module for the company's advanced in-shop diagnostic and repair tool, JPRO Professional, or as a standalone web portal. When integrated with JPRO, NextStep allows functions such as viewing live vehicle data, clearing faults and initiating bi-directional tests. NextStep utilizes a component-based database and provides detailed color-coded wiring diagrams, troubleshooting tasks, and more to improve accuracy of repairs and expedite the overall process.

For more information visit
VehicleServicePros.com/20999527



OWATONNA TOOL COMPANY FOR THE LONG HAUL

Proudly designing and manufacturing American specialty service tools, diagnostics and shop equipment since 1925.

TIRE SERVICE



DUAL/SINGLE WHEEL SEPARATOR

OTC5693 – Dual/Single Wheel Separator



TIRE BEAD BREAKER

OTC5728 – Tire Bead Breaker



TIRE SPOON RACK

OTC5715 – Tire Spoon Rack



WHEEL LOADER & TIPPER

OTC5752 – Wheel Loader & Tipper



TIRE PLIERS

OTC5731 – Tire Bead Locking Pliers

OTC5732 – Tire Spoon Holding Pliers

OTC5733 – Tire Bead Wedge Pliers



TIRE SPOONS

OTC5720 – Sliding Dual Tire Spoon, 35"

OTC5736-24G – Curved Tire Spoon with Grip Grooves, 24"

OTC5735-35G – Double End Tire Spoon with Grip Grooves, 35"



SLIDING BEAD BREAKER

OTC5727 – Sliding Bead Breaker



Diagnostics



Integrated thermal printer with customizable header

The **Associated Equipment Graphical Battery and Electrical Systems Tester**, No. 12-2415, performs 12V battery and electrical systems testing, including the ripple diode test and earth ground, as well as 24V starter and alternator systems. The tester has an integrated thermal printer with customizable header for shop use as well as the ability to key-in particulars for the battery model, vehicle license plate and customer name, and is reverse-polarity protected. The unit is sold in a blow molded carrying case that holds the tester, extra paper and optional barcode scanner (sold separately). In addition, the 12-2415 has a replaceable testing cable, stores up to 70 results and can be linked to a PC for printing/data storage.

For more information visit VehicleServicePros.com/21008087

Light to heavy duty truck diagnostics software

The **TEXA USA AXONE HD** truck package incorporates light, medium and heavy duty truck diagnostics software with a proprietary display tablet, the AXONE Nemo. The AXONE Nemo was fully developed in-house according to military standards for ruggedness and water resistance. It runs a full open version of Windows 10 Pro as its operating system allowing additional programs and services to be loaded thanks to magnetic expansion modules. The operating system is supported by an Intel Quad Core processor, 256 GB SSD hard drive and 8 GB of RAM. The tool offers parameter resets, bi-directionals, wiring diagrams, technical data and more. Updates are optional with no skip penalties.

For more information visit VehicleServicePros.com/20999506



Reprogram light to heavy duty trucks and buses

The **DG Technologies DPA 5 PRO** is a complete RP1210/J1939 diagnostic and reprogramming tool for all makes and models of light to heavy duty trucks and buses. The DPA 5 PRO is available in Volvo/Mack cable kits, laptop kits, tractor trailer kits, and comes with a two-year warranty. The USA-made product is compatible with Windows XP, 7 and 10.

For more information visit VehicleServicePros.com/21018356



Covers all vehicle classes

The **Autel MS906CV Heavy Duty Service Tablet** is designed to cover all makes, models and vehicle classes. The MS906CV can read and clear active and inactive codes in all modules, view and graph live data and works on trucks, buses and machinery. Notable features include: extended service coverage; injector CEOM reset; O2 sensor recalibration; after-treatment maintenance; particulate matter sensor regen; and more. The package includes the tool head unit, OBD-II cord, Deutsch 9-pin, Deutsch 6-pin, connector kit, full probe set, carry case, charging cord and user manual. This tool offers a one-year warranty and one year of free software updates.

For more information visit VehicleServicePros.com/20997281



Supports heavy duty, medium duty and OBD-II vehicles

The **DrewLinQ Heavy Duty and Commercial Diagnostic Tool**, from **Drew Technologies**, is a high-performance, rugged device supporting heavy duty, medium duty and OBD-II vehicles as well as off-highway, agricultural, military, automotive and other industrial-stationary equipment. It supports four concurrent CAN (J1939/ISO15765) channels, J1708, and all of the OBD-II protocols. It works with the TMC RP1210 applications shops currently use, other J2534 OBD-II pass-thru and diagnostic applications, and comes with a standard two-year warranty.

For more information visit VehicleServicePros.com/20970418

TEXA TRUCK DIAGNOSTICS: WE'VE GOT YOU COVERED



With TEXA you get what you deserve:

- IDC5 has the most comprehensive aftermarket coverage. Codes and wiring diagrams, interactive live data and thousands of activations and resets. Speed limiters, injector coding, forced regen and much more.
- The best return on investment for your shop, the TEXA software does not shut off if you do not renew the yearly updates.
- TEXA eTRUCK lets you perform diagnostics and resets remotely, miles away from the truck!

TEXA eTRUCK® TRUCK REMOTE DIAGNOSTICS



Deutsch 9 PIN
special adapter for
HD American Trucks

 Find us on
Facebook
facebook.com/texausa

VehicleServicePros.com/10094929

TEXA USA Inc.
409 Joyce Kilmer Ave
New Brunswick,
NJ 08901
www.texausa.com
northamerica@texa.com

TEXA

Tool Review

TEXA USA AXONE HD

For this reviewer, one tool fits all in his truck-heavy business.

Andrew Simmerman is the owner of Andrew's Diesel and Automotive Repair in Spanish Port, Alabama. At Simmerman's repair shop, trucks and heavy equipment are a common sight. So you could say having the right heavy duty diagnostic tool close at-hand is essential to business. The TEXA AXONE HD has been part of this technician's arsenal for years.

"I have seven total different scanners right now," says Simmerman. "The only time we use factory scanners anymore is when we have to program. [The AXONE] is 100 percent self-explanatory. It's touch and click."

Of all its features and capabilities, Simmerman most appreciates the AXONE's one-size-fits-all approach.

"It works excellent," says Simmerman. "It's so much easier because you have one tool to hook up all different truck types, instead of an International computer that



works on International [trucks] and doesn't work on anything else. This goes in, you hit one button, it finds out what type of truck it is and what it needs to be scanning and goes into it."

Technicians at the shop regularly use the tool for a variety of repairs. "[We use the AXONE for] off-road equipment, buses - you name it. It's an all-in-one," says Simmerman. "You can take just one tool to the job site."

Product description

The **TEXA AXONE HD truck package** incorporates light, medium and heavy duty truck diagnostics software with a proprietary display tablet, the AXONE Nemo. The AXONE Nemo runs a full open version of Windows 10 Pro as its operating system, and is supported by an Intel Quad Core processor, 256 GB SSD hard drive and 8 GB of RAM. The tool offers parameter resets, bi-directionals, wiring diagrams, technical data and more. Updates are optional with no skip penalties.

-Sara Scullin, Editor of PTEN

To read the full review, visit VehicleServicePros.com/21011241

Tool Review

FCAR F7SN Truck TabPro

This scan tool with software preload helps keep New York fire trucks in fine form.

The reviewer has worked with FCAR's F7SN Truck TabPro for the last eight months to help fix fire trucks with heavy duty apparatus. He says the Truck TabPro is a time-saver.

"The [technicians] are making repairs and getting trucks back in service, so I have to say it's a useful tool in our toolbox," he says.

The team uses the diagnostic tool frequently for check engine lights and engine diagnoses. They also use it to perform regens on smaller vehicles.

"The mechanics who work on the road work on a variety of all kinds of equipment in our fleet," the public safety fleet manager explains. "[The Truck TabPro] works on the sprinter vans, it works on the Fords, Dodges, Chevy and it also does the heavy duty truck. It's sort of a one-tool that's very broad that



we can use on all of our equipment, which is very helpful."

"All in all, our guys have been using it and having good luck," he adds.

Before using the Truck TabPro, this manager and his team were using OEM software to help diagnose fleet vehicles. He says where this tool really came in handy was to address some of their more "oddball stuff," that they might see every day.

The fleet director purchased one tool for each location he works with to supplement their OEM tools.

After his technicians piloted the FCAR F7SN Truck TabPro, he says everyone was on board.

Product description

The **FCAR F7SN Truck TabPro** is a wireless all-in-one truck diagnostic solution, covering most light duty, medium duty and heavy duty trucks and off road equipment. Features include all software preloaded and working independently, diagnostic functions, testing functions (cylinder cut-off and DPF regeneration) and reset bidirectional functions, featuring fast scan, remote print and customized data export.

-Sara Scullin, Editor of PTEN

To read the full review, visit VehicleServicePros.com/21044040

AN EMPOWERED TOOL,
EMPOWERING YOU.



PP3EZAS CASE & ACCESSORIES



PP3EZCS STAND ALONE PRODUCT

POWER PROBE 3EZ

POWER PROBE 3 WITH EZ LEARNING & EZ DIAGNOSTICS

The **Power Probe 3EZ** is a Digital Voltmeter that provides diagnostic power with the flip of a switch. This tool simplifies the testing of fuse boxes, verifies correct operation of motors, lights, relays and wires. This design includes an ergonomic body with a large screen that is capable of flipping 180 degrees for easy viewing in hard to reach spaces.

EZ Learning teaches the user all of the tool's functions, while EZ Diagnostics guides the user through basic electrical testing procedures with embedded QR codes, providing links to clear videos of each test, such as Fuse, Battery, Voltage, Component, Charge, and 5 Volt Reference.

AVAILABLE IN



VehicleServicePros.com/10095293

POWERPROBETEK.COM


Power Probe Tek

1.800.655.3585

Tool Review

Launch Tech USA X431 HD Heavy Duty Scan Tool

The reviewer says this scan tool offers diagnostic benefits in the field as well as in the shop.

Barry Hoyland, owner of Vehicle Service

Solutions of California, says the Launch Tech USA X431 HD Heavy Duty Scan Tool saved him time and money. With the single tool, Hoyland was able to navigate component modules and multiple systems on various vehicles, from passenger cars to Class 8 trucks.

For this review Hoyland used the X431 Heavy Duty Scan Tool to perform module scans on Freightliner, Kenworth and a Peterbilt; DPF status and manual regen on a Freightliner, and to diagnose low power issues on a Freightliner with a Detroit engine and a Peterbilt with a Cummins engine.

Hoyland reports the add-on was very easy to use, with an impressively quick

and intuitive navigation from screen to screen.

The number one benefit for Hoyland was the tool's Tech-to-Tech feature.

"This feature allows a technician with the same series of tool to log into a vehicle in the field and perform all functions of the scan tool," Hoyland says. "This [means fleets] can keep their diagnostic technician in the shop and send field service personnel into the field with a tool to connect to the vehicle."



Product description

The **Launch X-431 Heavy Duty Truck Add-On Module** turns the company's Pad II into a full-function heavy duty truck scan tool. The module provides access to Class 4 through Class 8 vehicles, and communicates via Bluetooth, or can be hard-wired to the vehicle. The module offers extensive model coverage and special functions, including engine, transmission, ABS and auxiliary. The module works on CAT, Cummins, Detroit, Freightliner, Fuso, Hino, International, Isuzu, Kenworth and more.

-Sara Scullin, Editor of PTEN

To read the full review, visit VehicleServicePros.com/21023996

Tool Review

Autel MaxiSYS commercial vehicle diagnostic scan tool

The reviewer says this scan tool helps reduce the time vehicles spend in the shop.

When it comes to working on heavy duty

vehicles and equipment, one of the most important qualities a shop looks for in a tool is its ability to maximize vehicle uptime. Bill Souers, manager of maintenance excellence at Dickinson Fleet Services in Indianapolis, Indiana, found the Autel MaxiSYS commercial vehicle diagnostic scan tool does just that.

"Our goal is to avoid getting [vehicles] out of service and to a shop, because that can be like a big black hole, in a lot of cases," Souers says. "Even if they get it into the shop right away, repairs typically take a couple of days. [With the MaxiSYS] our technicians can do a lot of the OEM software functions that keeps our customers' trucks out of the shop," he says.



The MaxiSYS is capable of bi-directional functions, which Souers says is one of the biggest reason Dickinson decided to use that particular product. He notes that functionalities such as advanced parameter settings are advanced for a scan tool. "Typically that's only available with OEM software."

While Souers notes that they use the scan tool's OE functionalities for maintenance and repair on "mainly Class 3 and larger" vehicles, the MaxiSYS is capable of these functions on Class 1 through Class 9.

Product description

The **Autel MaxiSYS, No. MS908CV**, is a wireless, heavy duty, diagnostic scan tool. The 10" touchscreen tablet has bi-directional control and can access all available modules for commercial vehicles Class 1 through Class 9. The MS908CV performs AutoSCAN and AutoVIN (2006+) and key programming on supported vehicles. It features advanced coding and adaptations and currently has 25 service functions including ABS brake bleed. A one-year tool warranty and one year of free software updates are available with purchase.

-David Brierley, Managing Editor

To read the full review, visit VehicleServicePros.com/21069135



Preloaded with two NEXIQ software applications

The **NEXIQ Pocket HD hand-held scan tool** comes preloaded with two NEXIQ software applications: LMT 2016 (for light and medium duty trucks) and the Heavy Duty Standard & OBD II Suite (which supports both J1708 and J1939 communication). Additional Pocket HD software applications are also available for purchase separately. These include the ABS Software Suite, providing support for Bendix ABS systems, as well as support for tractor and trailer brake systems from Meritor WABCO, Wabash National, Eaton and Haldex. The NEXIQ "All Makes" DPF Regen application (HD/LMT DPF Regen) is also available, giving technicians the ability to run the essential diesel particulate filter (DPF) regeneration procedure for a wide range of manufacturers.

For more information visit VehicleServicePros.com/21017852

Includes additional heavy duty coverage

The **CanDo Diagnostics HD Pro II** offers technicians an upgrade from the original model with a highly intuitive interface, a color screen and increased ease-of-use. It adds commercial transportation and agricultural/industrial machinery and equipment to its already broad Class 4 to 8 heavy duty coverage. The tool allows users to read and clear codes and use live data with graphing. The all inclusive tool also offers DPF/NOX reset; SCR/DEF functions and diesel hybrid access.

For more information visit VehicleServicePros.com/12185574



Turns Pad II into a heavy duty truck scan tool

The **Launch X-431 Heavy Duty Truck Add-On Module** turns the company's Pad II into a full-function heavy duty truck scan tool. The module provides access to Class 4 through Class 8 vehicles, and communicates via Bluetooth, or can be hardwired to the vehicle. It offers extensive model coverage and special functions, including engine, transmission, ABS and auxiliary from manufacturers such as Wabco, Bendix and Allison. The module works on CAT, Cummins, Detroit, Freightliner, Fuso, Hino, International, Isuzu, Kenworth and more.

For more information visit VehicleServicePros.com/20851528



Diagnose all leaks with one machine



The **Redline Detection Dual Purpose Diagnostic Leak Locator**, No. 95-0130, can diagnose all leaks, including low pressure for traditional vehicle EVAP/general repair and variable high pressure for turbo, diesel and heavy duty testing. The compact, durable machine offers variable pressure and variable flow, allowing the technician to adjust as needed to find even minuscule leaks in every type of vehicle. The all-in-one unit tests a complete fuel vapor recovery system, complete exhaust system, complete intake system, turbo and turbo housings, charge air coolers, all boosted engines, diesel particulate filter systems and diesel emission systems - without dyes or contaminants. The tool kit, with multiple adapters and accessories, comes in a durable case.

For more information visit VehicleServicePros.com/12195999

AUTEL
AUTOMOTIVE INTELLIGENCE

MAXISYS MS906CV

HEAVY DUTY SERVICE

COMMERCIAL VEHICLE DIAGNOSTICS



DIESEL DIAGNOSTICS

ALL MAKES / ALL MODELS
CLASS 1 (0-6,000LBS) - CLASS 9 (33,000LBS)



CONNECTORS INCLUDED

Deutsch 9-Pin / Deutsch 6-Pin
NEW NEW

23 SERVICE FEATURES

DPF REGEN & RESET • BRAKE & TRANS COVERAGE • CYLINDER POWER BALANCING

AUTO-SCAN

ACCESS ALL MODULES IN ALL SYSTEMS



MS908CV

- Class1 - Class9 / All Makes - All Models
- Android 4.0.4 / Quad-Core Processor
- Bi-Directional Control / Injector Coding
- Includes J2534 MaxiFlash Elite

AL529HD

- AutoVIN Quick DTC Definitions
- Read & Clear Trouble Codes
- One Click VM Readiness
- Enhanced Mode 6 Diagnostics

CONNECTORS INCLUDED

Deutsch 9-Pin / Deutsch 6-Pin
NEW NEW



Phone: (855) 288-3587 • USSUPPORT@AUTEL.COM
AUTEL.COM • MAXITPMS.COM • MAXISYSADAS.COM

© 2019 Autel Intelligent Technology Corp., Ltd.
All Rights Reserved

VehicleServicePros.com/10095724

Power Tool PURCHASE CONSIDERATIONS

✓ **Handle shape, size, length, material.**

✓ **Tool style, size and weight.**

✓ **Portability.**

✓ **Power trigger type.**

✓ **Controls and switches.**

✓ **Ergonomics.**

» Does the tool have features that increase worker performance and productivity while reducing discomfort, fatigue and risk of injury?

✓ **How much power/torque is required?**

✓ **Need for variable speed control?**

✓ **Vibration and noise level.**

✓ **Safety features.**

✓ **Accessories/attachments.**

✓ **Service recommendations.**

✓ **Durability.**

✓ **Warranty.**

✓ **Training resources.**

✓ **Technical support.**

✓ **Brand reputation.**

✓ **Budget range/price.**

✓ **For cordless tools:**

» What type of battery does the tool have? Battery type determines how long the battery provides power and how much time is required for recharging.

» Consider battery voltages - 8-12V systems are more common for ratchets and lighting, and applications

requiring lower rpm. 18-20V systems are most common for impact wrenches, etc. 20V+ are available for extended applications such as grinders.

✓ **For pneumatic tools:**

» Every air tool has an operational compressed air requirement - measured in cubic feet per minute (cfm). Every air compressor has a maximum cfm output. The air compressor's cfm output must be greater than the cfm requirement to keep all the pneumatic tools in the shop operating efficiently.

» Compatibility with existing systems.



Includes 6" extended anvil

RPG's 1" Drive Mini Plus Impact Wrench includes a 6" extended anvil and weighs 17.86 lbs. This tool features a three-position power setting, is powered by a durable twin hammer clutch and delivers a nut-busting

maximum torque of 2,600 ft-lbs and a free speed of 5,000 rpm. The impact tool is 19.2" in overall length and comes with a durable, rubber-coated side comfort grip for slip-free convenience and reduced fatigue.

For more information visit VehicleServicePros.com/21031453

Designed for high-torque applications

The **OEMTOOLS 20V MAX Li-ion Brushless Impact Wrench**, No. 24486, is designed for high-torque applications, like loosening and tightening lug nuts. Encased within the rugged exterior, the brushless motor provides 300 ft-lbs of nut busting torque, 260 ft-lbs of tightening torque and a variable speed of 0 to 2,600 rpm. An electric brake stops rotation when the trigger is released. The rechargeable 4.0Ah Li-ion slide battery charges in two hours with the tools charging station. The impact wrench weighs 9.28 lbs.

For more information visit VehicleServicePros.com/21025066



TEXAS TWISTER™ "IS PULLING FOR YOU"

LT855A TEXAS TWISTER™ - AIR HAMMER PULLING KIT

Use your air hammer to pull -

- Seals
- Diesel injectors
- Axles
- Bearings
- Harmonic balancers
- Pulleys
- Axle pinion flanges
- Old distributors
- Connect to your specialty pullers
- **NO MORE SLIDE HAMMERS**
- Patent #7,036,211



See it work on YouTube



We Make Good Ideas

LOCK TECHNOLOGY, INC.
Toll Free 800-421-7241
www.ltitools.com
ltitools@ltitools.com

VehicleServicePros.com/10095030

OEMTOOLS 20V MAX Li-ion Brushless Impact Wrench, No. 24486

Versatile for both professional and at-home use.

Eric Moore of DeMary Truck in Columbus, Ohio, used the OEM 20V MAX Li-ion Brushless Impact Wrench for wheel nut removal on light duty vehicles, including Ford C Series trucks and on some passenger cars.

"The [OEMTOOLS impact wrench] seemed well-suited for that task," Moore says. "When installing the wheel nuts, [it] allowed for a quicker transition, since the highest setting isn't likely to break any wheel studs, or over tighten the nuts to the point of causing damage. Any over torque can be easily remedied with a torque wrench."

Moore says that the tool, which comes in a blow molded carrying case, including a battery, charger and easy-to-read manual, is easy to use and lightweight. Because of

this, it is versatile enough to be an "excellent entry-level cordless option" for professional use or the do-it-yourself crowd.

"[The impact] has more than enough power and torque for occasional maintenance, or driving lag screws on fences and decks," Moore says.

While in the shop, he found that once dedicating the tool to one task, in his case removal and installation of lug nuts on light duty vehicles, the tool was "very capable and consistent."

Moore appreciated the light weight of the tool, which he says is on the lighter end of most other brushless impact wrenches he's used, and its versatility for at-home use.

Product description

The **OEMTOOLS 20V MAX Li-ion Brushless Impact Wrench, No. 24486**, is designed for high-torque applications, like loosening and tightening lug nuts. Encased within the rugged exterior, the brushless motor provides 300 ft-lbs of nut-busting torque, 260 ft-lbs of tightening torque and a variable speed of 0 to 2,600 rpm. An electric brake stops rotation when the trigger is released. The rechargeable 4.0 Ah Li-ion slide battery charges in two hours with the tool's charging station.

-Vesna Brajkovic, Associate Editor

To read the full review, visit VehicleServicePros.com/21028710



Offers comfortable grip and trigger

The **Mighty-Seven 3/4" Drive Composite Impact Wrench**, No. NC-6266 offers 1,500 ft-lbs of max reverse torque. This tool weighs 6.5 lbs and features a comfortable grip and trigger, grease port for easy maintenance and seven spring loaded rotor blades. The wrench also has a 360 degree swivel air inlet designed to improve overall performance and durability, according to the company.

For more information visit VehicleServicePros.com/20973601



1400 ft-lbs of torque

The new family of **Mac Tools air impact wrenches** is made up of four high performance impact wrenches and two standard air impacts both consisting of 1/2" and 3/8" drive sizes. The tools are designed to help technicians perform engine, wheel, crank bolt, steering, suspension and axle bolt removal. They offer 1,400 ft-lbs of torque and operate up to 6,500 max rpm in forward or reverse, and feature a proprietary forged anvil for durability. Additional features include trigger-activated removable and rechargeable LED lighting, and lightweight magnesium housing.

For more information visit VehicleServicePros.com/20989938



Lightweight, impact-resistant housing

The **Aircat Pneumatic 1" Drive Low Weight Impact Wrench**, No. 1870-P, offers 2,100 ft-lbs of maximum torque for an impressive power to weight ratio, according to the company. This impact wrench has a lightweight, impact-resistant housing, combined friction ring and through-hole socket retainers.

For more information visit VehicleServicePros.com/21026958

Hand Tool & Specialty Tool

PURCHASE CONSIDERATIONS

✓ **Tool design:** Style, size, shape, weight, etc.

✓ **Ergonomics:**

- » How well does the tool fit the hand?
- » Can the tool be used in a comfortable work position without causing awkward postures, harmful contact pressures or other safety and health risks?
- » Does the balance and the weight feel right?
- » How easy is it to use?

✓ **Quality.**

✓ **Durability.**

✓ **Warranty.**

✓ **Product support.**

✓ **Brand reputation.**

✓ **Budget range/price.**



Slide focus and anti-roll bezel

The **Coast High Lumen Rechargeable Handheld Flashlight**, No. TC14R, offers a 900 lm flashlight that combines the company's Long-Range Optic System with slide focus and anti-roll bezel, designed for easy use in the field. With a Flex Charge Dual Power system, this light uses either lithium or alkaline power and using a micro USB, the user can recharge the batteries either in or out of the light. The light is adaptable to different situations with a high, strobe or low mode with a slide focus. This flashlight is impact resistant, weather resistant and its LED is virtually unbreakable, the company says.

For more information visit VehicleServicePros.com/21033189

Remove brake anchor pins and bushings

The **Tiger Tool Brake Anchor Pin Press**, No. 16002, allows users to remove brake anchor pins and bushings on virtually all 16-1/2" S-cam trailer and tractor "Q" brake systems in minutes. The compact design ensures the job can be completed more efficiently without the removal of the hub assembly, the company says. The tool is manufactured from high-grade steel and the rigid C-frame can endure up to 10 tons of force.

For more information visit VehicleServicePros.com/20851821



For servicing Sheppard steering boxes

The **SP Tools Sheppard Pitman Arm Remover** from **Schley Products**, No. 14900, is designed for servicing Sheppard steering boxes equipped in large commercial trucks. Forged from alloy steel and heat treated for strength and rigidity, this tool offers the size and power required when servicing the steering gear that's equipped in Peterbilt, Mack, Freightliner, Kenworth, GMX/Chevy and other industrial truck applications. The tool's thread actuator is designed with a fine thread pitch for reduced effort during service, and it features a unique ball bearing tip that protects the sector shaft on the Sheppard box. Interchanging actuator tips help expand the functionality and range of applications.

For more information visit VehicleServicePros.com/21020113



Offers replaceable parts

The **U.W.T. Wheel Weight Pliers** are a patented, heavy duty made in the USA tool designed to remove all wheel weights on the market quickly and easily, with no force needed. These pliers work off of leverage,

making them simple to use without pinching fingers or scratching wheels. This tool offers replaceable parts.

For more information visit VehicleServicePros.com/21028630



Lifts up to 10 lbs

The **Ullman Devices HT-10 Magnetic Pickup Tool** is designed for retrieving objects in tight spaces. The magnetic head increases power while minimizing flux on the sides, the company says, and can lift up to 10 lbs. The sturdy steel antenna telescopes from 5-3/4" to 25-3/4". This tool also features a textured cushion grip and a pocket clip for added convenience.

For more information visit VehicleServicePros.com/21014012





Includes 24mm and 30mm offset sockets

The **Lisle NOx and Soot Sensor Socket Set**, No. 12290, is designed for easy access on NOx and soot sensors. The set includes 24mm and 30mm offset sockets with 1/2" drive. Each set has six and 12-point options. The set works on 2014 to current Ram 3.0L EcoDiesel V6 engines found in Jeep Grand Cherokee and Dodge Ram 1500 trucks.

For more information visit
VehicleServicePros.com/21028935



Full-polish chrome finish

The **GEARWRENCH 3/4" and 1" Drive Industrial Chrome Ratchets, Sockets and Accessories** are designed to handle tough jobs. The 3/4" drive accessories include: Flex Handle Breaker Bar; Sliding T-Handle; 5", 8" and 16" extensions; universal joint; adapters for 1/2" and 1" drive sockets; and open stock sockets with Off-Corner Loading technology. The 1" drive accessories include: 8" and 16" extensions; Flex Handle Breaker Bar; Sliding T-Handle; Adapter for 3/4" drive sockets; and open stock sockets that feature Off-Corner Loading technology.

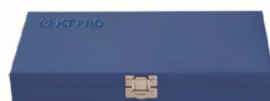
For more information visit
VehicleServicePros.com/21031282



Convenient fold away design

The **Ken-Tool Stow & Go Heavy Duty Wrench**, No. 35636, offers user convenience with a fold away design that allows the wrench to be stowed in a trunk, toolbox or behind a seat when not in use. The moveable arms easily swing and lock into the 90 degree position, and the arms can be slid within the locking hub to create greater leverage when removing and tightening a lug nut. The Stow & Go features three fixed 17mm, 19mm and 21mm lug nut sockets, plus 1/2" square drive adapter to use other sockets for lug nut removal. This wrench also doubles as a heavy duty, high torque wrench for the removal of other bolts or nuts.

For more information visit
VehicleServicePros.com/21021076

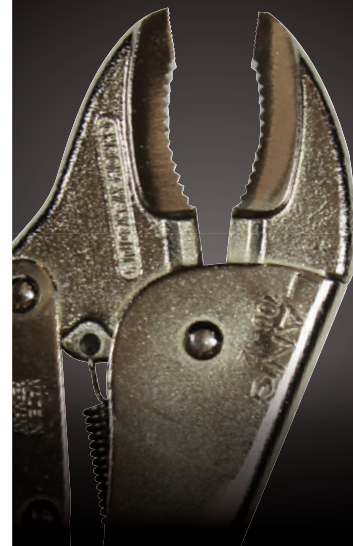


Starter kit with two drive sizes

The **KT Pro 1/4" and 3/8" Drive Socket Set**, No. A5001CR01, is a starter kit with two drive sizes and a combination of metric and SAE standard sockets in 6 and 12 point sizes. The 3/8" drive sockets include the company's patented grip strip technology that is color coded to easily identify between metric and SAE sockets. A heavy duty metal carrying case is included. This set is backed by a lifetime warranty.

For more information visit
VehicleServicePros.com/21016756

DROP FORGED CHROME VANADIUM STEEL JAWS



LOCKING PLIERS

Lock on instantly and release quickly.

Substantial weld by the adjusting screw makes for more secure adjusting.

Heavy duty rivets and weld construction.

Made in Germany.

AVAILABLE MODELS:

- Curved Jaws
- Long Nose Jaws
- Prisma Jaws
- Ideal Jaws
- C-Clamp
- Welding

LANG TOOLS
 Professional Tools For 4 Generations

WWW.LANGTOOLS.COM

VehicleServicePros.com/12069556

Specialty & Hand Tools



Pivoting bottom jaw for improved grip

The **KNIPEX Tools Gripping Pliers Series** is designed to offer a heavy duty design and extensive gripping abilities. The series includes the following: 10" Universal Gripping Pliers, which feature a pivoting bottom jaw designed to automatically adjust to any workpiece; 8" Long-Nose Gripping Pliers, which feature narrow, long jaws that are 1/4" in width; and 11" Welding Gripping pliers that feature moveable jaws with clamps for sections with high ridges up to 1-1/2". All the pliers offer a heavy duty design with a release lever and one-handed operation of easy use. The pliers are made from high-strength rolled steel, and the gripping jaws are forged from chrome vanadium electric steel.

For more information visit
VehicleServicePros.com/20984257



Includes metric bolts for most applications

The **OTC Heavy Duty Gear Puller**, No. 6614, is stout enough for almost any heavy duty application and includes a pair of metric bolts for most applications. The slim design cross block allows for pull more gears. The puller has a spread range of removing gears from 2" to 7-1/4" in diameter, including most cam gears. The tool includes sliding plates to ensure smaller gear bolts up to 1.2" in diameter are always centered. The puller is treated to resist corrosion and is covered by OTC's lifetime warranty.

For more information visit
VehicleServicePros.com/21023130

Color coded for ease of use

The **Ascot 6-pc Wheel Torque Wrench Set** is designed to eliminate guesswork and fatigue from tightening wheel bolts. These wrenches offer an accuracy of +/- four percent, are color coded for ease of use and are preset to the most common lug nut torque settings. The wrenches are one-way (not bi-directional) and feature cushioned ratchet heads. The set also includes a color coded wall board for easy access. Included wrenches are the Yellow, Blue, Grey, White, Aqua and the adjustable torque wrench. 1/2" drive sockets that are included are 17mm, 19mm, 21mm, 3/4", 13/16", 7/8", and a 6" extension.



For more information visit
VehicleServicePros.com/21031458



For use on Ford 7.3L International engines

The **ProMAXX Quido ProKit** is precision-engineered for the quick and easy removal of broken exhaust manifold bolts on the Ford 7.3L International engine. Quido is available as a ProKit, which includes all the accessories to deliver a fast and high quality repair. This tool is manufactured in the United States exclusively from American-made materials, and comes with a limited lifetime warranty and free unlimited technical support.

For more information visit
VehicleServicePros.com/21019975



Includes brass brush for use on aluminum brake calipers

The **Mueller-Kueps 2-pc Brass Brake Caliper Brush Set**, No. 467 000, is designed for removing burned in brake dust and dirt from brake calipers. This set includes one brass brush for use on aluminum brake calipers, with soft brass bristles to ensure proper cleaning. The steel brush can be used on any other brake caliper. An ultra slim design features a two-component handle with a soft grip. The brushes are a total length of 8.5" and are made in Germany. This kit helps reduce time spent cleaning brake calipers to help improve shop efficiency.

For more information visit
VehicleServicePros.com/21028393



Access hard-to-reach areas

The **Mayhew Tools Dominator Curved Pry Bars** are available in 48" (No. 14119) and 58" (No. 14120) lengths with orange or green handles. These pry bars are ideal for lifting and prying applications. The curved design and extended length are suitable for accessing hard-to-reach areas. A hardened and tempered steel alloy steel shaft runs from the cutting edge through the handle to improve durability and prying power, and a capped end allows for striking without damaging the handle. The pry bars offer a black oxide finish to prevent corrosion, are made in the U.S.A. are backed by a lifetime warranty.

For more information visit
VehicleServicePros.com/21044662

Three-way alert system for accurate torque



The **Digitool Solutions DW Series Torque Wrenches** feature patented sensing and micro controller technology with an accuracy level of +/- 1 percent in both clockwise and counterclockwise directions. These wrenches are available in 1/4, 3/8, 1/2 and 3/4" drive sizes with torque ranges from 12.5 in-lbs to 600 ft-lbs. These tools are powered by two AA batteries for up to 500 hours of continuous use. Other features include a high contrast LCD display and a three-way alert system with a tri-colored warning LED, an audible beep and a handle vibration to alert the user when approaching the torque setting.

For more information visit VehicleServicePros.com/20994837

Spring loaded arms

The **AST Universal Cylinder Liner Puller**, No. HTLP100, is designed to remove the cylinder lines on Caterpillar, Cummins, Detroit Diesel, Mercedes OM460 and Volvo D13 engines. The puller has spring loaded arms to fit the liner automatically, and includes a longer thread shaft and arms.

For more information visit VehicleServicePros.com/21033653



Extra long handles for improved leverage

The **Marson Big Daddy Huck Rivet Tool** is designed for large diameter blind rivets. Extra long handles provide improved leverage and allow working a foot beyond natural reach, the company says. Other features include a special bearing design, self-adjusting 2-pc jaws and a single-unit body. This tool is available in tool kits with nose pieces that fit the company's Huck Magna-Lok, Magna-Tite and Magna-Grip 3/16", 1/4" or both fasteners, allowing users to order the kit that's right for them.

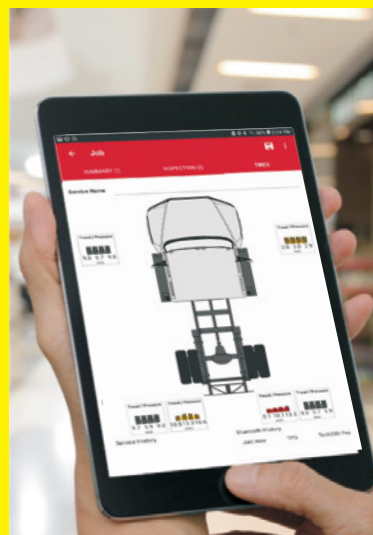
For more information visit VehicleServicePros.com/21016752



Fleet Tire Management!



- ☑ Check tire pressure
- ☑ Measure remaining tire tread
- ☑ Record it wirelessly to the application
- ☑ Access the data remotely



bartecusa.com



[855] 877-9732

VehicleServicePros.com/10094076

Shop Equipment

PURCHASE CONSIDERATIONS

- | | |
|---|---|
| ✓ Physical weight. | ✓ Lifecycle. |
| ✓ Capacity. | ✓ Will it fit the available work space? |
| ✓ Efficiency, versatility, productivity, etc. | ✓ Storage considerations. |
| ✓ Safety features. | ✓ Durability. |
| ✓ Ease of operation. | ✓ Warranty. |
| ✓ Ergonomics. | ✓ Training resources. |
| ✓ Accessories and options. | ✓ Product and technical support. |
| ✓ Power requirements. | ✓ Brand reputation. |
| ✓ Maintenance requirements. | ✓ Budget range/price. |
| ✓ Construction. | ✓ Available financing. |



Water-based units

Oil Eater Flex Line II Parts Washers from **Kafko** have a premium immersible pump designed to move fluids filled with particulates including metal shavings. Manufactured entirely from cast metals, it's a vast improvement over the submersible aquarium/fountain pumps typically used by the industry, according to the company. These units are water-based and come ready to use with Oil Eater Cleaner & Degreaser included. All Flex Line II models are constructed of high-impact HDPE and feature a 440-lb capacity working tray, adjustable gooseneck spigot, flexible cleaning brush and three-year limited warranty. Several options are available, including heat, filtration and low fluid protection.

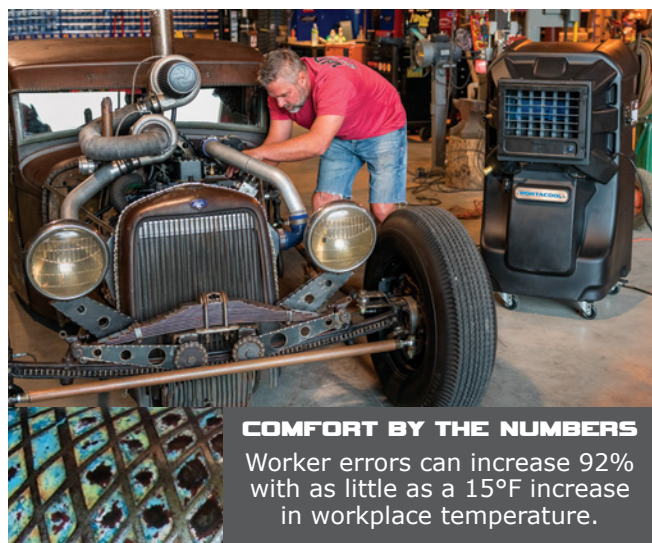
For more information visit
VehicleServicePros.com/20973826



Compact and easy to move

The **JohnDew 25-gal U.L. Listed Steel Diesel Caddy** is designed for professional automotive service and heavy duty markets. The Diesel Caddy features a 25-gal capacity 14-gauge steel tank with heavy duty 10" steel wheels, a fill level gauge and a wide footprint for stability. The heavy duty cast iron rotary pump with carbon vanes and Viton seals offers a two-way operation for siphoning or dispensing fuel. One gallon is delivered for every 12 revolutions on the pump handle. The cart style is compact easy to move. This caddy is suitable for use with diesel and bio-diesel fuels.

For more information visit
VehicleServicePros.com/21060224



COMFORT BY THE NUMBERS

Worker errors can increase 92% with as little as a 15°F increase in workplace temperature.

EVERY DEGREE MATTERS

A cool working environment isn't an extravagance. It is a key component to combatting the toll heat takes on worker productivity.

DISCOVER THE EVAPORATIVE COOLER RIGHT FOR YOU VISIT PORTACOO.COM



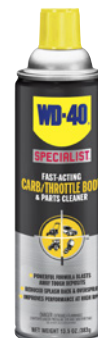
PORTACOO.
WHEN COMFORT COUNTS™

VehicleServicePros.com/10094546

Dual-action cleaning system

The **WD-40 Specialist Fast-Acting Carb/Throttle Body and Parts Cleaner** is an all-in-one cleaner spray for cleaning the carburetor, throttle body and unpainted metal parts. The product's dual-action cleaning system breaks up tough, baked on carbon deposits and blasts away waste without leaving behind a residue. This spray is ideal for both old and new vehicles and equipment.

For more information visit VehicleServicePros.com/21030721



Crush light duty and automotive filters

The **Ranger Oil Filter Crusher With Stand**, No. RP-20FC, is designed to crush oil filters and paint cans to 20 to 25 percent of their original size in seconds. This stand is ideal for crushing light duty truck and automotive filters. This equipment provides a solution for shops to get rid of used filters. Once crushed, filters can be delivered to a metal recycling facility to get scrap value for the metal. The included stand features a rugged metal construction and accommodates 5, 16 and 55-gal used oil storage tanks. The stand is constructed from robust metal and holds over 230 lbs of oil, and the crusher offers 50,000 lbs of crushing force.

For more information visit VehicleServicePros.com/21026214



Support raised vehicles and equipment

The **Stertil-Koni Axle Support Stands** are designed to support raised vehicles and other types of equipment. These stands are intended for use in even number sets of two, four, six or eight stands. Stands should be used on a firm, level surface and contact the raised load at the locations recommended by the vehicle/equipment manufacturer. These stands are available in folding or fixed frames, with capacities from seven to 18 tons per stand. The ergonomic design helps promote workplace safety. All stands over 36" tall include a spring in the support tube to minimize the risk of hand pinching. All models include a pin lock with keeper attached to a stand with steel retainer cable. Various contact adapters are available.

For more information visit VehicleServicePros.com/21060130



Align up to five axles simultaneously

The **Pinnacle Automotive Systems Jumbo 3D Super Alignment System** is an imaging aligner for multiple axle trucks, buses and trailers. Utilizing imaging technology, the Jumbo 3D Super is ideal for every environment, the company says. With one short runout compensation, users can have alignment readings on all five axles in less than three minutes. With an extensive data base, easy to use intuitive software and ability to align up to five axles simultaneously this alignment system is suitable for a variety of shops.

For more information visit VehicleServicePros.com/21028732

Parts Washers



Designed to Protect our Environment

FLEX LINE II Parts Washers

Modular Designs –
Interchangeable Features
Water Based Parts Washing System

The following washing systems are available:

- ▶ **BASIC Level**
- ▶ **PREMIUM Level**
- ▶ **PROFESSIONAL Level**



Call 1-800-528-0334
or visit www.oileater.com

For **FREE** sample
visit <http://tiny.cc/v6g42y>



Improved 2nd
Generation Design

Every Machine
Includes 6 gallons
Oil Eater® Cleaner
& Degreaser



VehicleServicePros.com/10094365

Bee Line 22000 Rear Axle Aligner

The reviewer found this system easy to use.

A properly aligned truck offers better tire performance and fuel economy, and the key to a good alignment is an effective alignment system. Chris Meyer, owner and operator of Meyer Truck and Alignment, appreciated that the Bee Line 22000 Rear Axle Aligner is accurate and easy to use.

"It's kind of an easy check," Meyer says. "It's easy to read. With the computer plugged in, it tells you basically where you're at and what you need to do."

Meyer's shop performs alignments on primarily class 8 trucks and trailers, but the system is also equipped to perform alignments on medium duty and even light duty if needed. "We're more on the heavy duty side of the system," Meyer says. "We use it to align just the truck, and the truck and trailer



Product description

The **Bee Line 22000 Rear Axle Aligner** allows users to accurately position the rear axles perpendicular to the vehicle's centerline so the wheels travel in a straight line. The user-friendly construction allows novices to set up the Rear Axle Aligner, and one person can take all necessary measurements in a few minutes, the company says. The unit calibrates reliably and quickly.

as a unit. With trailers, we can correct dog-tracking and irregular tire wear. On the tractor, it's mostly preventive maintenance or performing an alignment after rear suspension repairs."

The unit is very simple to use, he says. Although he's had the Bee Line system less than a year, he's already confident enough to train someone else to use the system. "I feel confident that anyone with the proper training can operate [this system] successfully," he adds.

Meyer has been doing alignments for "a long time," and is satisfied with his purchase. "It's a very good system, as far as knowing if it's calibrated or not, and being able to calibrate. It's at the top of the list. It was a good purchase," he says.

-Stefanie Von Rueden, Assistant Editor

To read the full review, visit VehicleServicePros.com/21068919

Flexible start height

The **Gray Manufacturing TSL Jack** offers a compact, field-ready design and low starting height that makes it ideal for shop use or road service work. The TSL features the company's Black Hard Coating to protect from rust and corrosion, acme threaded screw adjustment for flexible start height, modular design for easy repair and air retract ram for easy use.

The long handle design works well for hard-to-engage vehicles, and large rubber wheels improve ease of movement.

For more information visit VehicleServicePros.com/21011853



Heavy duty latch and spring assembly

The **Campbell Eye Hoist Hooks** feature a heavy duty latch and spring assembly designed for durability. A double-strength spring ensures the latch is held against the hook to securely retain slings and other components. The hooks are dual forged to support bosses, providing lateral support for precise latch/hook engagement. These hooks have a 5:1 design factor, and the variety of sizes offered have a working load limit range of 3/4 ton to 15 tons.

For more information visit VehicleServicePros.com/21016745



Weatherproof reel designed for outdoor use

The **Alert Stamping Weather Proof Outdoor Reel** is NEMA 3R rated, with a single female 5-15C connector and weather cap. This reel is available in two styles: The 5320TSW, which features a 20' SJTOOW 12/3 cord, 15 amp resettable circuit breaker, molded ball stop and a pigtail that is 60" SJTOOW 12/3 with a lighted male 5-15P outdoor plug; and the 5330MSW, which features a 30' SJTOOW 14/3 cord, 13 amp resettable circuit breaker, molded ball stop and a pigtail that is 60" SJTOOW 14/3 with a lighted male 5-15P outdoor plug. Each includes an "L" style mounting bracket and hardware.

For more information visit VehicleServicePros.com/21011477

Powerful and adaptable

The **Portacool Jetstream 220** is designed as a compact, portable evaporative cooler. This cooler is powerful and adaptable for small or hard-to-cool spaces. The Jetstream 220 features oscillating louvers to distribute cooling up to 700' with 2,400 cfm. It is also equipped with Kuul Comfort MicroTech evaporative media and is made in the U.S.A.

For more information visit VehicleServicePros.com/21002587



For heavy duty vehicle brake assemblies

The **ARI-Hetra Brake Maintenance Hub and Caliper Removal System** includes the Wheel Hub Removal Jack (No. WS-18-HR) and Brake Caliper Jack (No. WS-18-BC) to allow users to quickly and safely service heavy duty vehicle brake assemblies. These tools help avoid damage to hub seals and components, make the removal of the hub and caliper safer and easier, fit into tight spaces and are easy to move around the garage. The Wheel Hub Removal Jack features 1,100 lbs of lifting power and 6" heavy duty wheels.



For more information visit VehicleServicePros.com/21060193



Battery-operated truck and bus wash machine

The **Bitimec Speedy Wash 626 LX** 100-percent battery-operated truck and bus wash machine washes up to 30 buses or trailers on just one charge. This emission-free system provides quiet operation. Two controls provide safe two-directional operation, with unobstructed views. The proprietary brush-only inclination system protects vehicle from contact with the non-corrosive steel frame while providing maximum stability. The fully electric 24V battery drive provides maximum efficiency without power conversion loss. Unit comes with a 420 L/112-gal water tank.

For more information visit VehicleServicePros.com/21017986



Uses air to purge used oil

The **ESOC Series 1000 Oil Change System** uses air to purge the used oil from the vehicle's filter and oil passages while the oil pan is being evacuated, and replaces it with clean oil. The electronic controller offers prompts for oil samples, oil amounts and audio alerts as well as automatic shut-off when the oil pan is empty.

For more information visit VehicleServicePros.com/21018213



24500 Solon Rd.
Bedford Heights, Ohio 44146
(440) 232-5020 ext.223
www.alertstamping.com

INDOOR NEMA 3R Pendant Box Reels 5220T-D & 5220T-DH



FOR OUTDOOR USE
Also available with Weatherproof Connectors

5320T-SW 20' 12/3
5330M-SW 30' 14/4

Features:

- NEMA 3R Rated Outdoor/Indoor Reel with dual duplex pendant box
- 4 NEMA 5-15R Rated Outlets
- Rugged sealed enclosure
- Stainless steel fasteners
- Powder coated stationary "L" Style Mounting Bracket (attached to reel)

5220T-DH Features hospital grade plug/receptacles, and rugged sealed enclosure.

- 60" SJT00W 12/3 pigtail
- 20 FT SJT00W 12/3 wire
- 1875 WATT 15A/125V
- 15 AMP Resettable Circuit Breaker

VehicleServicePros.com/10094009

Toss Your Torch





Switch to Induction Heat

Mini-Ductor® Venom®

The Mini-Ductor Venom uses Invisible Heat® to release metal from corrosion and thread lock compounds without the dangers of open flame and up to 90% faster - 3/4" nuts are turned red hot in seconds.



INDUCTION INNOVATIONS
www.theinductor.com
877-688-9633

Applications:

- > Motor Mounts
- > U-Bolts
- > Fuel Tank Straps
- > Brakes
- > Torque Nuts
- > Inline Connectors
- > and 100's more!



follow us on: [in](#) [f](#) [t](#) [v](#) [p](#)

VehicleServicePros.com/10094332

Tool Storage Solution

PURCHASE CONSIDERATIONS

- ✓ **Required storage capacity.**
 - » Size, storage volume, style, configuration, etc.
- ✓ **Space efficiency.**
- ✓ **Number and size of compartments, trays, etc.**
- ✓ **Organizational options and accessories.**
- ✓ **Ease of use.**
- ✓ **Expandability/upgradeability.**
- ✓ **Construction and material type.**
- ✓ **Strength and durability.**
- ✓ **Color, finish, fit, graphics, etc.**
- ✓ **Portable, wheeling or stationary.**
- ✓ **How well will the storage solution fit in the work space or with existing storage solutions?**
- ✓ **How are tools and equipment safeguarded?**
 - » Built-in locks, latches designed for padlocks, electronic systems or other secure locking mechanisms?
- ✓ **Would complete systems for tool and asset monitoring and control be beneficial?**
- ✓ **Additional power source, for charging personal electronics and cordless tools?**
- ✓ **Quality.**
- ✓ **Warranty.**
- ✓ **Product support.**
- ✓ **Brand reputation.**
- ✓ **Budget range/price.**



Total weight capacity of 2,500 lbs

The **Milwaukee 46" High Capacity Steel Storage Combo** is designed to provide more capacity for tools and equipment and increased durability. This storage combo is engineered with thicker gauge steel and a reinforced angle iron frame, 6" industrial casters and edge protectors on all sides. The work station's 18 drawers includes 100-lb soft close slides, two bottom drawers with movable drawers and a total weight capacity of 2,500 lbs. The storage combo features a power tool organizer, a built-in power center and USB ports.

For more information visit VehicleServicePros.com/20980483



Three-point locking mechanism with key

The **Strong Hold Products Flammable Safety Cabinets** feature 14 gauge doors that provide improved protection for use in high traffic areas. The cabinets include heavy duty leaf hinges, galvanized shelves, sloped shelves, magnetic shelf labels and 6" legs that allow for forklift or pallet jack transportation. The cabinets meet NFPA and OSHA Standards, with double-wall construction with 1.5" air space and two 2" vents with flash arrestors. These cabinets are available in 45-gal, 60-gal or 90-gal sizes.

For more information visit VehicleServicePros.com/21008932

Resettable overload protection switch

The **Matco Tools Power Strip Cart Kit**, No. CART-POWER3, installs directly into nearly all Matco service carts, providing a steel power strip that contains three 5-15R outlets, two USB ports and resettable overload protection switch.

For more information visit VehicleServicePros.com/21005906



Holds shallow, semi-deep and deep sockets

The **Hansen Global 3 Row Socket Trays** are designed to accommodate shallow, semi-deep and deep sockets in one tray. Each post holds a socket securely and is marked with the socket size for quick and easy identification. The trays fit easily into the work station, helping users stay organized and immediately identify any missing sockets. These trays are available in 3/8" SAE (No. 38013), 3/8" Metric (No. 38023), 1/4" SAE (No. 14013), 1/4" Metric (No. 14023) or a four-pack that includes one of each size.

For more information visit VehicleServicePros.com/21011788



Clear compartments so users can see contents

The **Beta Tools Carry Toolbox**, No. CP15, has three organization compartments built into the top of the toolbox. This allows users to access these three compartments without needing to open the entire box. The compartments are clear, so users can see the contents without opening. This box is ideal for storing small, frequently needed items. Two compartments are removable and have adjustable partitions, so users can customize the spaces for items they want to store in them. The interior tote tray is the length of the toolbox and has a built-in carrying handle. The carrying capacity is 60 lbs.

For more information visit VehicleServicePros.com/21016077



Deep top storage compartment

The **K Tool International Tool Cart Locking Drawer**, No. KT175146A, is a 600-lb capacity shop cart that provides tool organization. The cart features 5" heavy duty swivel casters for easy maneuverability, and bumpers on all four corners for extra protection. Its lockable components provide security for the user's tools, and the deep top storage compartment features a gas strut lid for easy opening and closing. There are two small, one medium and one bottom steel drawers for roomy storage and maximum efficiency. A low-level bottom shelf offers easy storage for oversized items.

For more information visit VehicleServicePros.com/21016657

Keep small parts organized

The **JohnDow Storage Cabinets** are designed to house assortments of small parts. This cabinet is designed to hold up to 12 different assortments of the most popular service parts. The cabinet measures 14-1/4" wide, 13" deep and 46" high with adjustable drawer tabs to keep assortment boxes secure. The company offers 18 different assortments for key service categories. Each assortment comes in a durable plastic case that keeps parts organized. A detailed lid insert identifies each fitting with a photo of the part, size and description. Reorder part numbers, quantities and UPC codes are also shown.

For more information visit VehicleServicePros.com/21017009



Customizable and free-standing

The **Sonic Modular Storage System Plus (MSS+)** is designed to be customizable, integrated and free-standing with tools. The company says that the concept, creation and realization of the MSS+ reflects Sonic's commitment to pioneering modular storage systems.

For more information visit VehicleServicePros.com/21002583

TOOL STORAGE BUILT FOR TRUCKING

**When it comes to your tools and maintenance areas,
RELY ON THE BEST.**

Tool & Parts Drawers
Feature 400 lb. capacities

Work Stations can be
customized to your needs

Contact Us for a Free Quote:
www.borroughs.com | 800-748-0227

VehicleServicePros.com/10917513

Tool Storage Solutions

Dozens of options to fit user needs

The **Homak RS Pro CTS (Centralized Tool Storage) Combo** offers a variety of options and solutions for the user's tool storage and organization needs. This unit offers dozens of possible combinations, so users can find the right solution. The CTS transforms the company's RS Pro and PRO II Roller Cabinets into a professional work station.

For more information visit
VehicleServicePros.com/21028724



Full-size top drawer with adjustable partitions

The **GEARWRENCH Mobile Work Station** offers practical functionality and durability with customizable features that allow users to make this station work for them. The Mobile Work Station features industrial grade 6" by 2" wide polyurethane locking casters that support a max capacity of 2,000 lbs. With 11 different-sized drawers, including a full-size top drawer with adjustable partitions, and a lockable side cabinet with adjustable shelf this storage space is flexible enough to fit any tool. The drawers offer 100-lb capacity ball-bearing locking drawer slides. With a charging tray and power strip with six 120V outlets and two USB ports, users can charge tools and power electronic devices as needed. A spray can shelf and pegboard panel offer additional options for customizable storage of tools, power cords, hoses and more.

For more information visit VehicleServicePros.com/21021581



Keep drinks, cans and more within reach

The **Master Magnetics Magnetic Cup Caddy Plus** keeps drinks, cans, spray paint, lubricant, small tools and more within reach. Magnets attract to any ferrous surface including toolboxes, cabinets and even stationary vehicles. The Cup Caddy Plus features a 4" by 5" metal plate that can be mounted to non-ferrous surfaces with the included screws or adhesive.

For more information visit VehicleServicePros.com/21028636

Here is what **\$412,600** in savings looks like.

Save this ANNUALLY with Bee Line alignment systems.*

Aligning vehicles on your own Bee Line system reduces the downtime and extra labor of shuttling trucks off-site, so it's easier than ever to maintain peak performance.

Up to 70% of the trucks on the road are misaligned right now, and 100% will benefit from regular adjustment. Learn more about maintaining your fleet in-house, with a Bee Line alignment system.

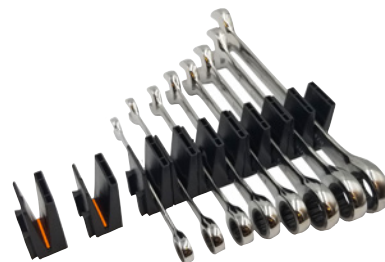
*Results will vary by fleet size.



800.728.7828 | sales@beeline-co.com

Find out how Bee Line alignment systems can reduce your operating costs.

Contact your independent Bee Line sales representative to add alignment to your fleet's maintenance program. Call 800-728-7828.



Modular design with strong magnets

The **ToolBox Widget Wrench Organizer** is an independent modular tool organizing system for the toolbox. This tool organizer allows users to add or subtract and choose the exact number of holders they need. The widgets can save up to 30 to 40 percent of space to maximize toolbox drawer room, according to the company. Features include a modular design, strong magnets, missing tool indicators, changeable size labels and a flexible material. Each kit holds 14 wrenches, 1-3/4" tall, and magnets are a 5-lb pull each.

For more information visit VehicleServicePros.com/21025011

VehicleServicePros.com/10094087



HEAVY LIFTING

Let Us do the



1.800.821.7320 • GRAYUSA.COM

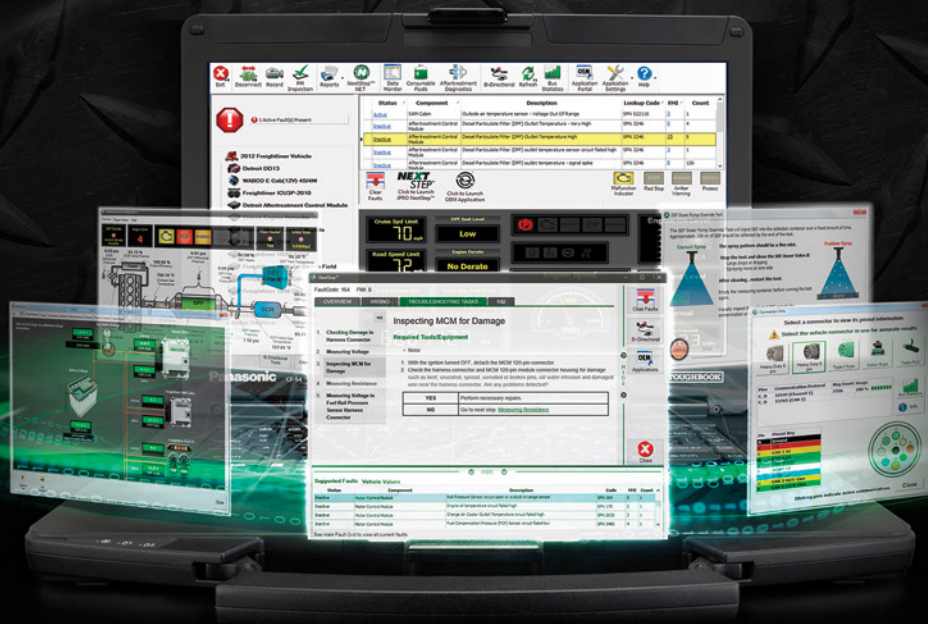
VehicleServicePros.com/10094277

Experience the GRAY Difference



REPAIR WORK WITHOUT THE GUESSWORK.

Let us guide you all the way from fault to fix.



JPRO®
PROFESSIONAL



NEXTSTEP™
SERVICE INFORMATION

JPRO®, the #1 in-shop diagnostic and repair tool, just got even better with its improved add-on troubleshooting module, **NextStep™**. NextStep gives you the ability to launch industry-leading bi-directional controls directly from the application so you can go from fault to fix - faster than ever. With coverage based on components rather than vehicles, you can stand out from the competition by working on the latest models without delays.

VehicleServicePros.com/10122188

Learn More: www.noregon.com/nextstep/FM
For Available Discounts CALL: (855) 889-5776



NOREGON.
VEHICLE DATA EXPERTS

©2019 Noregon. All Rights Reserved. JPRO is a registered trademark of Noregon. NextStep is a trademark of Noregon.