

SUPPLEMENT  
BROUGHT TO YOU BY

**Fleet**Maintenance

**P**TEN

**VEHICLE**SERVICEPROS<sup>.com</sup>

# Vehicle Lift Guide

**Lift safety  
considerations  
for everyday use**  
page 4

**Plan your  
purchase**  
page 11

**GUIDE TO:**

**New lift equipment and accessories,  
safety and maintenance insights,  
and end-user reviews**





# HEAVY LIFTING

Let Us do the



1.800.821.7320 • [GRAYUSA.COM](http://GRAYUSA.COM)



Experience the GRAY Difference

Circle 300 on card, or enter at "e-inquiry" on [VehicleServicePros.com](http://VehicleServicePros.com)



# Lifting for safety and efficiency

Purchasing the right vehicle lift and knowing how to operate and maintain it are keys to a safe and efficient shop.

By David Brierley

**W**hile the task of lifting a vehicle may sound simple, a lot more goes into it than meets the eye. This guide is designed to provide the information needed to make informed purchasing decisions as well as advice for lift operation and upkeep. It is a useful tool to keep around when planning the purchase of a new lift, and beyond.

- **Purchasing.** What size vehicles will you be lifting? How much space is available in

your shop? What types of tasks will you be using the lift for? These are all questions that need to be answered in order to determine what lift is right for your shop.

- **Safety.** Proper operation is one of the most important factors when it comes to lift safety. All technicians in your shop should be properly trained on how to use and maintain the lift.
- **Inspection.** The national safety standard

mandates that all lifts should be inspected at least annually by a qualified lift inspector. All technicians working on a lift should also inspect it daily for any wear, cracking, or other obvious signs of compromised equipment.

- **Maintenance** is key to lift safety and longevity. A well-maintained lift should last years, and will go a long way toward keeping technicians safe. ●



10



12



18



17

On the Cover:  
Photo courtesy of Stertil-Koni

**VEHICLESERVICEPROS**  
VehicleServicePros.com

## 3 Welcome

An introduction to the Vehicle Lift Guide, brought to you by Fleet Maintenance and PTEN magazines.

## 4 Know your lift

Techs who get to know the lifts they use regularly are more likely to notice the first signs of trouble, keeping themselves and all who use the lifts safer.

## 6 How to choose the right lift for your shop

When choosing a lift, consider your customer, safety, and features to help capture the greatest ROI.

## 7 10 steps to promote lift safety in shops

Considerations to enhance vehicle lifting performance and safety.

## 10 Selecting proper two-post lift accessories

Ensure safety and lift compatibility when purchasing vehicle lift accessories.

## 11 Pathway to purchase

Considerations when selecting a lift for your shop.

## 12 Equipment reviews


- Hunter Engineering RX12 Scissor Lift
- Atlas Platinum PVL-12
- BendPak XPR-10S
- Rotary Lift Flex Max

## 16 Products

Details on different vehicle lifting equipment and accessories available from a variety of lift manufacturers.

**Online Exclusive**  
**Equipment review:**  
**Rotary Lift Flex Max 419**

To read the review, visit:

 **VehicleServicePros.com/21091127**

 **FACEBOOK**  
facebook.com/VehicleServicePros

 **TWITTER**  
@VehicleSvcPros

 **LINKEDIN**  
linkedin.com/company/VehicleServicePros

# Know **your lift**

Techs who get to know the lifts they use regularly are more likely to notice the first signs of trouble, keeping themselves and all who use the lifts safer.

By Buck Gasner



I've been in the vehicle lift industry for more than 20 years and have seen first-hand how industry standards and manufacturing processes have changed over time. One thing that hasn't changed, however, is the importance of lift safety.

When my fellow Automotive Lift Institute (ALI) Certified Lift Inspectors and I are out inspecting vehicle lifts, we are seeing lift owners and operators being more proactive when it comes to improving service bay safety. They are recognizing how a strong safety program

can help protect their people, equipment, and the sustainability of their businesses.

## **Lift inspections**

Lift inspections can help keep technicians safe and may identify minor issues before they grow into more dangerous ones. Inspections can also help shops reduce potential downtime or the cost of a lift replacement. ANSI/ALI ALOIM, the national safety standard covering lift operation, inspection, and maintenance, mandates that all vehicle lifts be inspected at least annually by a qualified lift inspec-

To improve bay safety, technicians should get to know their lifts by truly paying attention to potential safety hazards or damage to the lift and its accessories. For example, it is important to check lift contact points, such as lifting pads, to make sure they are free of debris, grease, oil, and anything else that may prevent solid contact. Adapters in the condition shown here should not be used.

Photo courtesy of ALI





tor. Hiring an ALI Certified Lift Inspector ensures that you're working with someone who has been third-party tested and found capable of inspecting any lift. We look at everything, including all electrical and mechanical lift components, training records, and lift maintenance logs.

The outside perspective ALI Certified Lift Inspectors bring is valuable. When technicians use lifts every day and are focused on getting their work done, it's easy for them to unintentionally overlook small things that might cause safety issues. Often, we will show operators or managers issues found during inspection and they are amazed that they've overlooked it all day, every day, for months.

## Tips for lift operators

Our team encourages technicians to get to know their lifts by looking, listening, and truly paying attention to the characteristics of how the lift operates. Taking this approach will allow the operator to report changes in the condition of the lift to their supervisor or owner at the first sign of any of these conditions:

- **Missing or damaged warning and capacity labels.** Capacity labels tell technicians at a glance the lift's rated load capacity to help prevent overloading. Warning labels and safety materials are specific to each lift and should be kept with the lift at all times.
- **Damage or excessive wear of lift hoses, wire rope, chains, electrical wires.** A hose failure can cause problems ranging from a loss of efficiency to a catastrophic lift failure, so any abnormalities need to be treated immediately. Look for obvious signs of rubbing, cracking, or pinching on all hoses and piping. Look for wear marks, fraying, or signs of stretching on chains, wire ropes, bearings, and pulleys. These items are most prone to wear at the "bends and the ends," so look closely anywhere they bend around corners or pulleys, or where they make a connection.
- **Damage or excessive wear of any lift contact points.** Any time there is damage to a lift contact point, you are losing potential "grip" on the vehicle contact point, dramatically increasing the risk of a vehicle shifting or sliding. Check lift contact points, such as lifting pads, to make sure they are free of debris,

grease, oil, and anything else that may prevent solid contact. Make sure that bolt-on rubber pads are secure, and that the rubber or serrated steel isn't torn or worn.

- **Evidence of hydraulic or pneumatic leaks.** Hydraulic or pneumatic leaks need to be dealt with as a serious issue. Small leaks can turn into big leaks, which can cause catastrophic failure. Listen for any "hissing" sounds from a pneumatic system, as this could be an early indicator of pneumatic leaks. Look for any evidence of oil outside of a cylinder or on the floor, as this confirms a hydraulic leak is present and must be repaired.
- **Cracks or loose concrete around the floor anchor bolts.** An old adage in the lift industry is that "a lift is only as strong as the floor it is bolted to." Any time a crack or other abnormality is found involving the concrete, an assessment needs to be made regarding how the lift and service bay safety may be negatively impacted. If it is determined that either the manufacturer's instructions or other observations demonstrate a safety concern, appropriate action should be taken immediately. Since some lift types put more stress on the floor than others, any change in the floor (cracks, loose concrete, anchors loosening up, etc.) should be investigated.
- **It's important for lift operators to properly use controls, restraints, or load holding (locking) devices to avoid dangerous situations.** Load holding devices are at the heart of lift safety – if they are not working or being used properly, it causes the entire load to rest on the hydraulics, wire ropes, or chains. It is imperative that the main controls (lifting and lowering) return to neutral when operators release the controls. If a lift continues raising after the lifting control is released, or continues moving downward after the lowering control is released, the lift should not be used until inspected by a qualified lift inspector and serviced before further use. Do not override these controls.

## Lift training

A comprehensive lift training program is critical to exceptional service bay safety.

Lift operator training should be part of the on-boarding process for every new technician and should continue annually, at minimum.

A service bay safety program goes beyond the sign hanging on the wall that says "200 days without an accident." It means properly and continually training technicians on lifts and all equipment. It's talking about safety daily and making sure the operators know what to watch for and how to address potential issues.

ALI's "Lifting It Right" online lift safety training certificate course is a great resource on the proper use of all types of vehicle lifts. New this year, shops can sign up for an annual subscription that gives them unlimited access to the course, so it's easy to make sure every technician – experienced or new – is trained.

In addition to general lift training, lift operators should be trained on the specific lifts they will be using. Don't assume that because a technician has 20 years of experience, they know how every type of lift operates. Many ALI Certified Lift Inspectors and lift manufacturer representatives can provide individualized training. To find a local ALI Certified Lift Inspector, visit [autolift.org/find-a-certified-auto-lift-inspector/](http://autolift.org/find-a-certified-auto-lift-inspector/).

Training should cover lift operation and the lift manufacturer's recommended list of safety checklists, which are designed to help operators spot minor issues before they compromise safety. ALI Certified Lift Inspectors recommend that training involves the adoption and execution of a planned lift maintenance program.

Investing in and enforcing a lift safety program pays dividends for shops beyond keeping everyone safe. It improves overall service bay safety, increases the bottom line by reducing workers' compensation claims, limits lift downtime, lowers insurance costs, and minimizes repair costs. ●



**Buck Gasner** is operations manager for DEKRA Automotive North America and serves as the associate class representative to the Automotive Lift Institute (ALI) Board of Directors.

# How to choose the right lift for your shop

When choosing a lift, consider your customer, safety, and features to help capture the greatest ROI.

By Steve Perlstein

“**W**hat’s the heaviest vehicles I’ll be raising to service?” This is one of the most important questions to ask when making a lift purchase. The answer will guide you in your search for the best equipment fit, whether you are lifting a fire truck or a passenger car. There are many lifts available, such as the two-post, four-post, parallelogram, vertical rise, etc. This article will focus on the most popular – the two-post lift.

Among shop owners, two-post side-by-side lifts are often the most common choice, as they take up a minimal amount of shop space and provide a generous amount of under-vehicle access. Two-post lifts also leave tires hanging free, are affordable, and can be installed quickly in just a few hours.

Two-post lifts range in capacity from 7,000 to 30,000 lbs, and this is where the above question comes into play. If you’ll never service more than a Honda or a Chevy Impala, a 7,000- or 10,000-lb capacity lift will suit your needs. But what if a Ford F-550, an ambulance, or a service truck comes to the shop for repair? What if these vehicles are suddenly your new customers or your business changes? If that happens, consider this a red flag that it’s time to think about a heavier capacity two-post lift.

Where you live matters. If you live in metro Los Angeles or Boston, most of the population drives small cars. If you’re in a more rural part of the country, there’s a higher population of trucks, and so you might consider a heavier capacity lift.

Regarding capacity, don’t just look at the total weight of the vehicle. Per the Automotive Lift Institute (ALI), the safety organization of lift companies in the U.S. and Canada, a two-post lift with a 12,000-lb capacity rating has a maximum per arm

capacity of 3,000 lbs. If a service truck has a rear axle capacity of 8,400 lbs and front axle capacity of just 3,000 lbs, be aware that the 12,000-lb lift would be overloaded by 4,200 lbs on each of its rear arms. Even though the total weight of the truck is under 12,000 lbs, the lift is still being pushed past its capacity.

Don’t make the mistake of saving a few dollars buying a lower capacity lift, as you could be risking your safety and the safety of your employees, customers, and the vehicles you service. Pay attention to the warning decal supplied on two-post lifts. They are a visual reminder *not* to exceed maximum capacity per swing arm.

Another question to ask yourself before buying, and an often overlooked feature, is how high must the lift rise before the mechanical locks start to engage? While the ALI advises to always lower the lift onto the locks, if there are no locks then your lift is only being held up by hydraulic pressure. Some lift brand locks start at 2-3” off the ground and some don’t start until 24”. These lifts may not have safety locks that engage at every height. When buying, keep in mind you or your technicians will be operating under these safety locks.

Another feature of lift locks to consider is the indicator of whether the locks are in-use. One manufacturer offers a light on top of the column which lights when the lift is on the locks. Other manufacturers offer a pressure gauge, calibrated to the weight of the vehicles being lifted. This “scale” reads 0 lbs when the lift is lowered onto the locks.

If a customer complains of poor mileage, the car pulling, or says the inexpensive brake pads have prematurely worn, the weight gauge becomes a diagnostic tool. Just raise the vehicle and given the weight



Image courtesy of Mohawk Lifts

shown, the scale now becomes the method to show your customer why they should buy better ply tires, higher quality brake pads, or load levelers instead of shocks (all increasing your shop’s revenue per repair).

Also take into account whether the lift has a drive-on ramp, and the minimum height of the lift arm when fully retracted. Both features can speed workflow, saving time and money.

Per the ALI, ANSI (American National Standards Institute), and the International Code, a lift must be certified to the ALI standard. A lift without proper certification can be locked out/tagged out in an impromptu inspection. In addition, all accessories used with the lift (think truck adaptors used on every pick-up) must be certified, as non-certified options will void the certification of the lift. Be sure to verify a lift before purchasing.

When purchasing a lift, take the time to consider all the features that will be most useful to you. Remember, a great price on the wrong piece of equipment is still the wrong piece of equipment. Safe lifting. ●

*To read an extended version of this article, visit **VehicleServicePros.com/21088950***



**Steve Perlstein** is president of Mohawk Lifts (mohawklifts.com). The company offers environmentally safe above-ground lifts ranging from 6,000- to 240,000-lb capacities, along with many lift accessories.



# 10 steps to promote lift safety in shops

Considerations to enhance vehicle lifting performance and safety.

By Dr. Jean DellAmore

**D**esigning and equipping a modern service facility to support trained technicians with the latest, safest equipment is imperative.

With this in mind, there are 10 essential steps to evaluate, select, and use heavy duty vehicle lifts to boost safety and performance in fleet maintenance shops:

## 1. Certification counts

The Automotive Lift Institute (ALI) Lift Certification Program has made it easy for lift buyers to choose lifts that have been third-party tested and proven to meet safety and performance requirements outlined in the safety standard ANSI/ALI ALCTV (current edition). Testing includes verification of the structural integrity of all lift model systems and components, proper function of its controls and load-holding devices, the proper lowering speeds, and overload protection.

## 2. Weight and height matters

Know in advance the weight of the heaviest vehicle a shop intends to lift, and make certain that the lift selected is certified to meet or exceed that capacity. In terms of height, always measure the height clearance of the building and tallest vehicle before selecting a lifting system.

## 3. Vigilance during setup

When ready to operate the lift, technicians should check the perimeter of the lift to confirm nothing is obstructing its path and there are no hazards. Then, lift the vehicle no more than 12" off the ground, pause, and do another sweep of the area. Also, make sure that the vehicle being lifted is level.

## 4. Authorized use

Ensure only fully trained and authorized personnel operate the lift. Select a lifting system that prevents unauthorized access to operate lift. This could be a locked control box, or a secure key or "wand" required to activate the lift system before use.



**A high-lift wheel dolly allows wheel removal without back strain.**

Photo courtesy of Stertil-Koni

## 5. Keep it stable

Before operating a mobile column lift, always be sure each column is placed on a firm foundation and level ground. When lifting outdoors, be aware of wind loads. Also, make certain the vehicle's wheels are properly engaged with the forks on the lifts.

## 6. Proper positioning

For in-ground lifts, operators should always ensure the contact points are properly positioned. Further, select a lift with an "electronic synchronization" system. In this way, as the lift goes into motion and continues through the full range up to its maximum height, vehicles will lift smoothly, even those with unequal weight distribution.

## 7. Technician protection

At all times, lift vehicles to the proper height. This allows technicians to move about freely and work comfortably underneath the vehicle. Some lifts, such as all Stertil-Koni lifts, feature an independent mechanical locking system that can be heard locking into place.

## 8. Strict maintenance schedule

Make certain that all lifts are subject to a regular program of scheduled maintenance by following the manufacturer's recommended

schedule and receive an annual lift inspection by an ALI certified lift inspector.

## 9. Use ergonomic accessories

Stertil-Koni suggests using shop equipment and accessories specifically designed for particular lifts to ensure operator safety and proper ergonomics. Examples include a high-lift wheel dolly for wheel removal and proper alignment of dual tire assemblies and brake drums, or support stands to help facilitate a broad range of maintenance procedures.

## 10. Create a culture of safety

Service bulletins, safety messages, and continuous technician training are vital to a smooth-running maintenance facility.

Safety and performance can work to elevate vehicle maintenance facilities to new levels of efficiency, particularly when a well-conceived game plan is at the core of selecting and using vehicle lifting systems. ●



**Dr. Jean DellAmore**, president of Stertil-Koni, has been in the heavy duty lift industry for more than 30 years. DellAmore has several academic degrees including an MBA and MA from George Washington University, and a doctorate from UMUC.



# ATLAS PLATINUM

**ATLAS PLATINUM 2 Post Lifts** are ALI Certified, commercial grade, and designed to accommodate both long wheel base trucks and passenger cars. All are equipped with a premium ALLY Hydraulic power units. These units are certified by MET Laboratories to meet UL201 compliance standards.

**PLATINUM**  
**WARRANTY**  
5 Year Structural;  
2 Year Power Unit



## **AP-PVL9BP**

Atlas Platinum 9,000 lb. Capacity  
ALI Certified 2 Post Base Plate Lift

## **AP-PVL10**

Atlas Platinum 10,000 lb. Capacity  
ALI Certified 2 Post Overhead Lift

## **AP-PVL12**

Atlas Platinum 12,000 lb. Capacity  
ALI Certified 2 Post Overhead Lift

## **AP-PVL15**

Atlas Platinum 15,000 lb. Capacity  
ALI Certified 2 Post Overhead Lift

**WARNING:** Cancer and Reproductive Harm - [www.P65Warnings.ca.gov](http://www.P65Warnings.ca.gov)



# 866.898.2604

[www.atlasgarageequipment.com](http://www.atlasgarageequipment.com)

Circle 301 on card, or enter at "e-inquiry" on [VehicleServicePros.com](http://VehicleServicePros.com)



# CERTIFIED COMMERCIAL GRADE EQUIPMENT



AP-PVL15  
Shown



4 POST LIFTS



WHEEL BALANCERS



TIRE CHANGERS

# Selecting proper **two-post lift accessories**

Ensure safety and lift compatibility when purchasing vehicle lift accessories.

By Spencer Labbe



**Using ALI certified lift accessories can help ensure shop safety.**

Photo courtesy of BendPak

## **Common lift accessories**

### **>> FRAME CRADLE PADS**

Frame cradle pads are a popular accessory for larger trucks and SUVs. They are made to straddle the chassis frame of a truck, preventing any movement.

### **>> SCREW LIFT PADS**

To fine-tune a lift to just the right height, screw lift pads are the way to go. Screw lift pads screw vertically, allowing you to adjust the height of the points of contact up to an additional 3".

### **>> ADAPTER PINS**

Similar to screw lift pads, adapter pins are designed to alter the height of the points of contact. With sizes of low, medium, and tall, adapter pins provide lifts with an even broader range of heights to choose from.

## **Accessorize safely**

Using the ALI Lift Directory to find a lift and the ALI certified accessories that go with it will go a long way in the accessory buying process. Moreover, purchasing a lift accessory from the same place you purchased your lift will ensure that the products were engineered to work safely together.

If you're in the market for two-post lift accessories, use these tips to determine the best and safest accessory for you. At the end of the day, the accessories you purchase have more resting on them than just a vehicle. ●

*To read an extended version of this article, visit [VehicleServicePros.com/21089944](http://VehicleServicePros.com/21089944)*

If you're doing serious work using a two-post lift, you need the right tools for the job. Not all vehicles are made equally, and some jobs require special equipment. Accessories for two-post lifts help lift different vehicles. However, without the proper research, any addition to your two-post lift can potentially be dangerous. Knowing the different lift accessories, and how to choose the proper one, can save you from making harmful mistakes.

So, what are the proper two-post lift accessories, and how do you know which ones are considered safe to use?

## **Confirm lift accessories are certified**

### **>> ALI AND LIFT ACCESSORIES**

When it comes to automotive lift safety, there should only be one name on your mind: the Automotive Lift Institute (ALI).

With full-size vehicle lifts, ALI certification is the best way to be assured of your lift's safety. The same applies to vehicle lift accessories. An ALI approved accessory is certified for its design and construction safety. With so much at risk, you need to know that you can trust the tools you're using on your vehicle. ALI certification proves that

the vehicle lift and/or accessories you use have been rigorously tested and examined.

Additionally, only ALI certified accessories should be used with an ALI certified lift. If you use an attachment that is not certified on a certified lift, you could void the certification for as long as the lift remains altered.

Not only is an ALI certified accessory your safest option, but if you want your lift to remain certified it's your only option.

### **>> ARE THE ACCESSORIES SAFE FOR YOUR LIFT?**

Most lift manufacturers sell lift replacement parts and accessories along with the lifts themselves. In many cases, these accessories are designed to fit perfectly and function safely with your lift.

Whether adding an accessory or replacing a part, you should always purchase from the same manufacturer who made your lift. This goes for every kind of full-size lift available, from two-post lifts to four-post lifts.

Some accessories may only be ALI certified in conjunction with a corresponding lift. To find out which two-post lift accessories are ALI certified for a lift, find the lift on ALI's Lift Directory ([autolift.org](http://autolift.org)) and scroll to the bottom of the page where compatible lift accessories are listed.



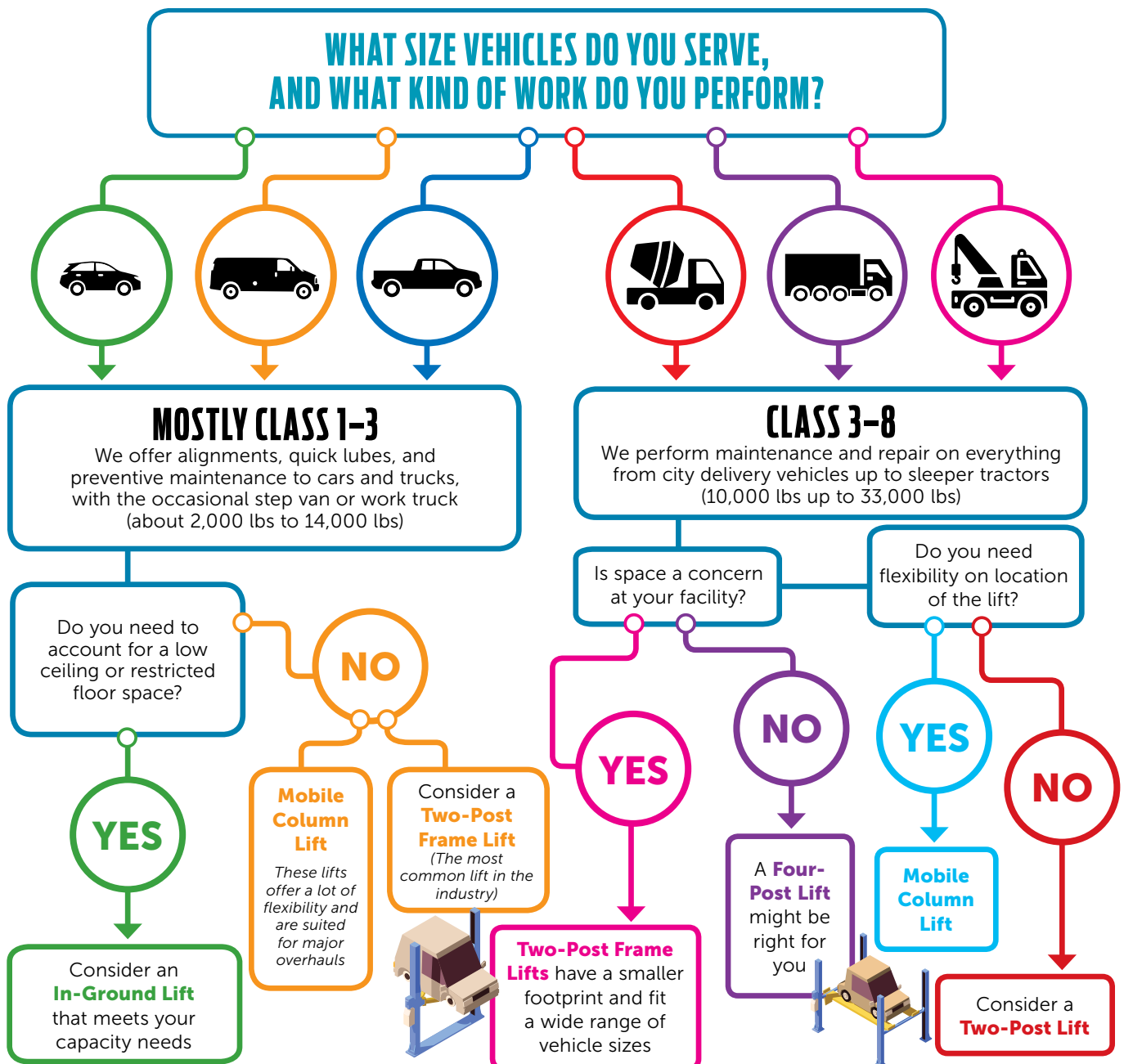
**Spencer Labbe** is the creative content writer for BendPak and their suite of brands. Lover of cool cars and other things that go vroom, Labbe enjoys reading about the latest trends in the car world.



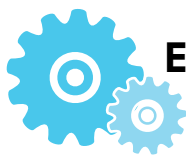


# Pathway to purchase

A lift is a big purchase ... in every way. Consider the following to make sure you're on the right track to purchasing the lift that fits best in your facility. First, consider how your lift will be used and where it will be located in the shop. Take into account shop ceiling height and the maximum weight your shop floor can hold. Then, consider any features or options that would make sense for your business.



**Tip: Always use ALI certified lifts**



# Hunter Engineering RX12 Scissor Lift

This lift's versatility and ability to streamline vehicle service make it an asset to the reviewer's shop.

By David Brierley

### PRODUCT DESCRIPTION

The **Hunter RX12** car scissor lift series is designed to maximize productivity while utilizing limited space. The lift features extra-wide 24" runways, along with optimal drive-on height, standard safety locks, sensor feedback system, velocity safety fuses, and an integrated airline kit, as well as the company's patented control panel and exclusive louvered ramps. The lift also features a hydraulic system to lower descent times by 50 percent, while standard swing air jacks provide high-capacity lifting up to 6,000 lbs.

Circle 316 on card, or enter at "e-inquiry" on [VehicleServicePros.com](http://VehicleServicePros.com)



### THE REVIEW

**T**he goal for any automotive repair shop is to provide customers quality vehicle service in a convenient timeframe. Typically, if a customer can wait a short time for their vehicle to be serviced and not have to leave it at the shop for part of a day, it's considered a win.

Brandon Henson, owner of Henson Auto Service in Greer, South Carolina, uses the RX12 Scissor Lift from Hunter Engineering mainly for tire and alignment services. He finds that the lift, paired with Hunter's Hawkeye Elite alignment machine, allows him and his technicians to complete a full, four wheel alignment very quickly.

"Most of our alignments ... literally take somewhere between 15 to 30 minutes," he says. "You can have a car on the lift and up in the air in ... one to two minutes."

Henson's Hunter lift is equipped with the company's Fully Integrated Align-

ment (FIA) system, which syncs the lift and alignment equipment to streamline the alignment process. Henson notes that in addition to the Hawkeye Elite alignment machine, his shop also uses Hunter's Revolution tire changer and Road Force wheel balancer.

"As far as the alignment machine with that lift, they're made and designed to be used together so all of the functions go from one console to the lift itself, and back through the alignment machine, so everything functions flawlessly," he says. "There's a lot of automation that's going on between the locking of the lift, unlocking of the lift, things like that."

Alignments aren't the only service the technicians at Henson Auto Service use the Hunter lift for, however.

"[Even though] it's an alignment lift, we still use it as a service lift sometimes to do brake jobs [and] tire rotations," Henson says. "And we do all of our service jobs on it as well - [such as] oil changes - because

it's so fast, and it allows us to do our alignment rollouts at [the same] time. We can do an alignment check, oil change, and tire rotation, and still have the car back up front in 30 minutes or so."

In addition to enabling the shop to provide speedy service, Henson says the lift has proven reliable and easy to maintain as well, improving the shop's efficiency by providing consistent uptime and quick, in-house maintenance.

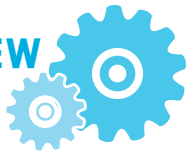
"I've had that piece of equipment now ... [at least] three years, and I've never had a major malfunction, ever," he adds. "We keep up with maintenance ourselves - it's very easy to maintain."

After using the lift for several years, Henson couldn't be more pleased with its performance, versatility, and durability.

"That machine has been pretty much flawless," he says. "It's one of the backbones, if not *the* backbone of the shop." ●

To see photos of Henson's lift, visit [VehicleServicePros.com/21091071](http://VehicleServicePros.com/21091071)





# Atlas Platinum PVL-12

The reviewer appreciated the extra height and width of the lift, as well as the weight capacity.

By Kayla Oschmann

## THE REVIEW

For shop owners looking for safe, easy-to-use lifts that are also affordable, research is a necessity.

Shop owner James Lyman of Lyman Automotive in Midlothian, Virginia, did quite a bit of research before he found the lift that met his requirements: the Atlas Platinum PVL-12.

"I bought Atlas lifts in the past and was always happy with them," Lyman says. "The price point is good, as well."

Lyman recently opened a second shop in Powhatan, Virginia, where he has installed the Atlas Platinum PVL-12, along with another Atlas lift.

He and his team of technicians especially like the weight capacity of 12,000 lbs, the extra distance between the two columns, and the added lift height. At his shop in Midlothian, Lyman has lifts that have a 9,000-lb capacity, but when he opened his second shop location he wanted lifts with higher weight capacity. So, he purchased one that has a 10,000-lb capacity as well as the two-post, overhead Platinum PVL-12.

Having the extra capacity comes in handy.

"We work on just about everything, including trucks and SUVs," Lyman says. "If you have a 9,000-lb [capacity] lift and a truck weighs 9,000 lbs, to me that's a little sketchy. I'd rather lift a 9000 lb truck on a 12,000-lb [capacity] lift. I just feel safer about it."

The same goes for the additional height.

"If you had, let's say, a truck with a ladder rack on it, with a normal lift you wouldn't be able to pick it up," Lyman says. "But with [the Atlas Platinum PVL-12], because it's extra tall, you don't have a problem lifting it and getting underneath it."

## PRODUCT DESCRIPTION

The **Atlas Platinum PVL-12** is an ALI certified overhead 12,000-lb capacity two-post lift designed to accommodate both long wheel base trucks and passenger cars. The distance between the symmetrical columns is almost 123" with a drive through space of over 108". The lift features an Ally Hydraulic AL3500 Power Unit, three-stage front and rear arms, professional grade arm lock restraint system, and a single point lock release. It includes a truck adapter set and mounting hardware. The lift has a five-year structural warranty and the power unit has a two-year limited warranty.

**Circle 317 on card, or enter at "e-inquiry" on [VehicleServicePros.com](http://VehicleServicePros.com)**



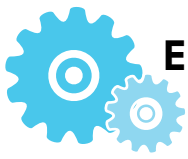
Other key features that Lyman noted about the Platinum PVL-12 were its easy use and maintenance. The Atlas lift is powered by a 220V motor. It takes about two minutes for a vehicle to get set up on the lift and then raised, and less than a minute for the lift to lower the vehicle back down, Lyman says.

As for initial setup, Lyman said it didn't take any more time or effort than other comparable lifts to install.

The lift also came with truck adapters, which Lyman and his team have used. He says these work very well.

Lyman noted that while the lift's large, fully adjustable arms are ideal for lifting trucks and SUVs, they can sometimes pose a challenge while lifting small cars.

Overall, his research paid off. Lyman says he is "very pleased" with his vehicle lift purchase for the new shop. Features such as the 12,000-lb weight capacity and the additional height and width were top features that sold this shop owner. ●



# BendPak XPR-10S

This lift lands a perfect rating from a shop owner who attests to its dependability.

By Tyler Fussner

## THE REVIEW

**T**homas Stevens, owner of Powerhouse Performance in Simi Valley, California, provided a review of the XPR-10S and attests to its dependability.

After Stevens purchased the XPR-10S, BendPak put him in contact with a third-party company to take care of the installation of the lift – a process that Stevens says went very smoothly. The lift came with a manual; the manual was detailed with color illustrations, which Stevens found useful. However, he did say that the manual was barely needed.

The lift's operation was straightforward and did not pose any concerns or questions for Stevens.

"It goes up and down. It's got a button and a release lever," he says.

With the button and lever mounted to the post of the lift, there is not much to worry about when operating, Stevens reports.

When a vehicle is centered between the posts, the lift's arms can quickly and easily be placed into position to initiate the lifting process.

"The arms are telescoping, so you can pull them in and out," he says, noting his favorite feature of the XPR-10S.

Stevens also mentions the lift's ability to facilitate the use of screw lift pads on the arm-ends. He claims the screw lift pads make adjustments much easier than using solid pads, allowing for the precise flexibility to adjust to multiple vehicle types.

Stevens says a vehicle can be lifted into place in around 10-15 seconds and lowered back to the ground in a similar amount of time. Powerhouse

Performance uses the XPR-10S to lift old school hot rods, early model Ford vehicles, new-age muscle cars, and even trucks. The 10,000-lb rated lift allows the shop to work on a large range of vehicle types.

"It's a huge asset to my business," Stevens says. "The reason why is because of the quality. First things first, it's the

## PRODUCT DESCRIPTION

The **BendPak XPR-10S**, No. 5175395, is an ALI certified, symmetric two-post lift with a 10,000-lb lifting capacity. The XPR-10S features an adjustable top beam to accommodate wide or narrow installation setups, allowing users to configure the lift to specific space or vehicle lifting requirements. The XPR-10S also features low-pressure HVLP direct-drive cylinders, eliminating the need for lifting chains or screw mechanisms. A dual-synchro equalization system maintains equal lifting and provides operators with a stable, level vehicle working condition. The XPR-10S features double-telescoping arms, screw pads with gouge and tear-resistant polyurethane padding, and a set of 63mm stacking adapters is included with the purchase of a lift.

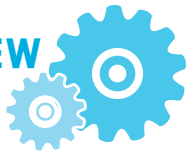
**Circle 318 on card, or enter at "e-inquiry" on [VehicleServicePros.com](http://VehicleServicePros.com)**



quality. I've used this lift every day for the last two years and it's never let me down."

The XPR-10S' long-standing dependability impressed this shop owner and is the main reason he gave the lift a top rating. ●





# Rotary Lift Flex Max

The reviewer was impressed by how much the lift increased his shop's efficiency.

By Emily Markham

## THE REVIEW

If you want to improve on your shop's efficiency and save time on repairs, reviewer Kevin Cromley, owner of Cromley Truck and Trailer Repair in Milton, Pennsylvania, recommends adding Rotary Lift's Flex Max to your shop.

The shop owner says the wireless mobile column lift "increased our efficiency more than I could have expected."

Cromley and his employees were fortunate enough to have their tool dealer, Turner Hydraulics, give them a demo of the lift, but Cromley says the lift's simplicity makes it so anyone can use it.

"[The Flex Max lift is] very easy to set up and use. It's all self-explanatory [with] your codes on the side of the box," Cromley says. Everybody in his shop is able to operate the lift without the use of the remote and lift manuals that came with it.

In the shop, they use the lift to perform oil pan service, suspension work, transmission work, and rear-end work. Cromley says he didn't buy any accessories or adapters for different vehicle types because he bought the Flex Max lift for service jobs.

"It works on everything we do. We work on semi-trucks, straight trucks, buses ... [and] it's nice to have that capability to lift almost 90,000 lbs," he says.

Without the lift, Cromley's shop wouldn't be able to do many jobs because "these new trucks have so much flaring on them that you can't even get

under them," he says.

When looking into buying the Flex Max, Cromley considered many different lift options and even alternatives to lifts such as a pit, which was quickly ruled out due to the increase in insurance rates, and a ramp, which is not nearly as efficient as having a lift.

When considering specific features, such as corded versus cordless, Cromley chose cordless. The Flex Max lift's portability is one of his favorite features.

"We can move them anywhere in the shop to run multiple jobs at one time while we're waiting on parts, [which] cuts down on service times on trucks," he says.

Lifting and lowering a vehicle only

## PRODUCT DESCRIPTION

The **Rotary Lift Flex Max** is a wireless mobile column lift, powered by RedFire, that can be operated exclusively by remote control or via controls located on every column. The Flex Max is available in configurations of two, four, six, or eight columns and offers lifting capacities of 14,000 or 18,800 lbs per column. The lift can be used to raise most cars, pickups, work trucks, garbage trucks, buses, and other vehicles. Flex Max comes equipped with Rotary's Lock-Light technology that shows whether the lift is resting on its mechanical load-holding locks.

Circle 319 on card, or enter at "e-inquiry" on [VehicleServicePros.com](http://VehicleServicePros.com)



takes around two or three minutes after you turn the lift on.

"We shut ours off when we're using them, that way we're not draining the batteries. A lot of times when we're doing a long job, we just lock them and leave [the truck] set on the lifts," Cromley explains.

Overall, Cromley is very pleased with the Flex Max equipment. He's even considering buying a second set before the end of the year.

"I look at it this way," he says. "It's an investment to the company when you buy equipment like this. They may not be the cheapest, but ... they're worth every penny." ●



## FOR VANS, TRUCKS, AND BUSES

The **Stertil-Koni WDA 500 High Lift Wheel Dolly** is a flexible and

ergonomic manually-powered wheel dolly for the easy lifting of wheels, fuel tanks, tool boxes, brake drums, and other heavy parts. The WDA 500 has a 1,100-lb capacity and can accommodate wheel sizes from 10.63" to 51.18". The dolly stands 47.17" high with a width of 45.28" and length of 33.30". It weighs 220 lbs and has a lifting height of 28.23". Its wheel retaining bracket and heavy duty wheels make maneuvering of the dolly easy and safe.

**Circle 307 on card, or enter at "e-inquiry" on VehicleServicePros.com**



## A SELF-RETRACTING CABLE SYSTEM

**SLEC's The Ultimate Pack** is a self-retracting cable system that gets the cables off the floor while maintaining the reliability of cabled systems. The Ultimate Pack attaches to the side of each column. The user pulls out the cable to the desired length and loops the cable stop onto the cable hook to the lift it is being attached to. Once the cable is connected to the cable hook, the cable is plugged into the lift. When the lift is moved, the cable automatically retracts back into the cable storage system.

**Circle 308 on card, or enter at "e-inquiry" on VehicleServicePros.com**

## FEATURES A COMPACT DESIGN AND SMALL FOOTPRINT

The **Omer IPPO Double Scissor Lift** features a compact design and small footprint while delivering a 10,000-lb weight capacity. The IPPO is ideal for shops with high lift-cycles or for heavy vehicles, service bays, lube shops, and dealerships. The IPPO is ALI Certified.

**Circle 309 on card, or enter at "e-inquiry" on VehicleServicePros.com**



CL Challenger Lifts



INNOVATION. QUALITY. SERVICE

## ADJUSTABLE COLUMN HEIGHT

Challenger's 10,000 lb. & 12,000 lb. capacity 2-post lifts now offer the most versatile installation in the industry!

With 6" of adjustment at the top of each column, our 2-post models provide allowance for any ceiling obstruction.

NEW  
INSTALL  
UPGRADES!



[WWW.CHALLENGERLIFTS.COM](http://WWW.CHALLENGERLIFTS.COM)

**Circle 302 on card, or enter at "e-inquiry" on VehicleServicePros.com**



## AVAILABLE IN CONFIGURATIONS OF TWO, FOUR, SIX, OR EIGHT COLUMNS

The **Rotary Lift Flex Max** is a wireless mobile column lift, powered by RedFire, that can be operated exclusively by remote control or via controls located on every column. The Flex Max



is available in configurations of two, four, six, or eight columns and offers lifting capacities of 14,000 lbs or 18,800 lbs per column. The lift can be used to raise most cars, pickups, work trucks, garbage trucks, buses, and other vehicles. Flex

Max comes equipped with Rotary's LockLight technology that shows whether the lift is resting on its mechanical load-holding locks.

Circle 310 on card, or enter at "e-inquiry" on [VehicleServicePros.com](http://VehicleServicePros.com)



## ARMS EXTEND TO 72" LONG

The **BendPak XPR-12CL-LTA Two-Post Lift** offers a stable lifting solution with its triple-telescoping arms that extend to 72" in length for servicing trucks and vans with long wheelbases. Balancing safety and worker productivity, the lift is ALI certified and includes a 16-pc adapter set.

Circle 311 on card, or enter at "e-inquiry" on [VehicleServicePros.com](http://VehicleServicePros.com)



## LIFTS COMMERCIAL VEHICLES BY THE WHEELS

The **iDEAL MSC-18K-X Mobile Column Lifts** are ALI certified and available in sets of two, four, and six columns providing up to 108,000 lbs of lifting capacity. MSC-18K-X lifts are 24VDC battery operated with an on-board charging system and retractable cable reels, and come standard with LED magnetic lighting. MSC-18K-X lifts are designed to lift large commercial vehicles by the wheels with optional ALI certified accessories providing flexibility to lift smaller trucks by frame for wheels-free service.

Circle 312 on card, or enter at "e-inquiry" on [VehicleServicePros.com](http://VehicleServicePros.com)

stertil KONI

# MAXIMIZE

## YOUR UPTIME



**ECOLIFT**

60,000–120,000 lbs.

**MOBILE COLUMN LIFTS**

14,000–40,000 lbs. per column

**FREEDOM LIFT**

16,000–30,000 lbs.

**SKYLIFT**

62,400–156,000 lbs.

**DIAMOND LIFT**

64,000–140,000 lbs.

### HEAVY DUTY LIFTING FOR ALL YOUR NEEDS



800.336.6637

www.Stertil-Koni.com

Circle 303 on card, or enter at "e-inquiry" on [VehicleServicePros.com](http://VehicleServicePros.com)

AUGUST 2019 | Vehicle Lift Guide | 17

## FEATURES A 19,000-LB CAPACITY PER COLUMN

The **MAHLE Service Solutions Wireless Mobile Column Lift CML-9** features a touch screen graphic control system and a patent-

ed self-centering adjustable carriage, providing the user with a reliable and safe lifting environment. The CML-9 lift is ALI certified, 24V, and has a wide, adjustable carriage for over-sized tire engagement. It has a lift height of 69", maximum hydraulic operating pressure of 2,600 psi, and 19,000-lb capacity per column.

**Circle 313 on card, or enter at "e-inquiry" on VehicleServicePros.com**



## REDESIGNED TO MAXIMIZE QUICK VEHICLE SPOTTING IN EXPRESS BAYS

The **Challenger Lifts EV1020 Inground Lift Series** has been redesigned to maximize quick vehicle spotting in express bays. The EV1020 Inground Lift Series will now be available with a 9,000 lb low-profile drive-over pad with flip-up ramps. The EV1020-XP9 models are available with Quick Cycle technology to reduce rise and descent time as well as bench mounted controls. The new configuration replaces the previous MP9 models to provide the simplest, quickest vehicle loading to reduce frustration in shops.

**Circle 314 on card, or enter at "e-inquiry" on VehicleServicePros.com**



## DESIGNED FOR LOW CEILINGS

The **AMGO BP-10 Baseplate Lift** is designed with no overhead obstructions for low ceiling professional and home garages to increase headroom. The rugged BP-10 can lift vehicles up to 10,000 lbs. The lift's arms provide versatility when choosing between asymmetric and symmetric positions, and eliminate the need for two different kinds of lifts. The three-stage front arms and two-stage rear arms allow entry into and out of the vehicle when needed.

**Circle 315 on card, or enter at "e-inquiry" on VehicleServicePros.com**



**We STAND  
BEHIND  
Our Product  
So You Can  
STAND SAFELY  
UNDER Yours**



slec@slec.com | www.slec.com | 1-800-826-3486

**Circle 304 on card, or enter at "e-inquiry" on VehicleServicePros.com**



## ALLOWS INDEPENDENT REAR DUAL WHEEL ROTATION



The **Quality Stainless Products (QSP) Tire and Wheel Lift**, No. LM-350, is designed for the heavy duty service industry. Tire and wheel assemblies can weigh as much as 350 lbs, making them difficult for one person to mount and demount. The LM-350 offers an off-center column design that helps improve access to lug nuts, wheel balancers

and tire changers. This unit offers variable speed control for raising and lowering wheel assemblies safely. The dual rollers are designed to allow independent rear dual wheel rotation. **Circle 320 on card, or enter at "e-inquiry" on VehicleServicePros.com**



## COMPACT AND VERSATILE LIFTING SOLUTION

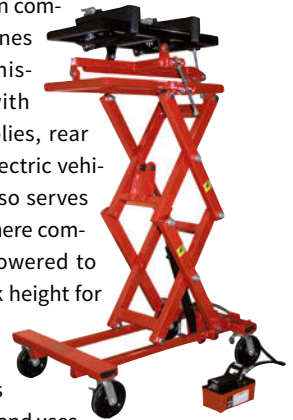
The **John Bean 12K 4-Post Alignment Lift System** offers 12,000 lbs of heavy duty capacity in a compact package. The lift system features 20.5" wide "Pro-Style" runways for loading vehicles of narrow to wide track widths and 81.6" long rear slip plates so re-positioning of the front turn plates is not needed. It also offers an ultra-low profile design that allows an easy-on approach for low ride height vehicles, as well as a closed front design to maintain a steady and ridged lift for accurate alignment measurements.

**Circle 321 on card, or enter at "e-inquiry" on VehicleServicePros.com**

## FEATURES A 2,500-LB CAPACITY

The **Norco Powertrain Lift Table**, No. 72850A, handles powertrain components like engines and their transmissions, engines with transaxle assemblies, rear ends, and large electric vehicle batteries. It also serves as a work table where components can be lowered to a convenient work height for repairs. The scissor lift design provides 360 degree access to any component and uses a hydraulic foot pump. A 5' extension hose is included and can extend the foot pump to provide hands free operation around the lift's perimeter.

**Circle 322 on card, or enter at "e-inquiry" on VehicleServicePros.com**



**MOHAWK LIFTS**

**BUY ONCE. BUY RIGHT.  
BUY A MOHAWK!**



TP-16-3SA

**25  
YEAR  
WARRANTY**

### TWO POST LIFTS

7,000 through 30,000 lb. capacities with 25 year structural warranty. **Inquiry #10**



### FOUR POST RUNWAY LIFTS

19,000 through 120,000 lb. capacity models give complete under vehicle access. **Inquiry #13**



MP-18

### MOBILE COLUMN LIFTS

MP-Series electric-hydraulic mobile lifts available in 2, 4, 6, or 8 post configurations. Industry leading 26,000 lb. front to rear bumper adaptors. **Inquiry #12**



[www.mohawklifts.com/PTEN](http://www.mohawklifts.com/PTEN)



**1-800-833-2006**

**Circle 305 on card, or enter at "e-inquiry" on VehicleServicePros.com**



# LIFT TRAINING AT YOUR FINGERTIPS



BendPak endorses **Lifting It Right**, the ONLY training program developed by industry safety watchdog Automotive Lift Institute (ALI) and based on more than 70 years of experience in protecting technicians. One-time enrollment with auto-renewal means you "set it and forget it!"



## **\*\$240 annual pass gets you:**

- Unlimited access to **Lifting it Right**
- Full participation for your entire team
- Official ALI safety training
- Significant cost savings
- Online record storage
- Easy compliance with training requirements

Order now at [www.autolift.org/ALI-STORE](http://www.autolift.org/ALI-STORE)

**ONE EASY PAYMENT!**

\*Subscription per facility

**AVAILABLE IN SPANISH**

Circle 306 on card, or enter at  
"e-inquiry" on [VehicleServicePros.com](http://VehicleServicePros.com)

**LIFT IT RIGHT OR DON'T LIFT IT AT ALL!**



Providing safe and innovative lifts for over three decades

**BP BendPak®**