

PTEN

JUNE 2021

PROFESSIONAL TOOL & EQUIPMENT NEWS

SCAN TOOL *SPEC GUIDE* 2021



A comparative list of functions and features for a large selection of aftermarket scan tools from 23 equipment manufacturers.

IN ASSOCIATION WITH THE FOLLOWING
PTEN-AFFILIATED PUBLICATIONS:

FleetMaintenance

**PROFESSIONAL
DISTRIBUTOR**

SPONSORED BY:

AUTEL

BOSCH
Invented for life

CanDo
INTERNATIONAL, INC.

cojali
USA

Continental 150
YEARS

HUNTER
Engineering Company

LAUNCH
TECH USA
CREATE • CHANGE

MATCO
TOOLS

NEXIQ
TECHNOLOGIES

NOREGON
VEHICLE DATA EXPERTS

OPUS | IVS

pico
Technology

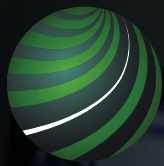
Snap-on

THINKCAR

TEXA

TOPDON
USA

XTOOL USA



OPUS | IVS

**PUT A FACTORY-TRAINED
TECHNICIAN ON EVERY
VEHICLE WITH**

DRIVEPRO™ ES

DrivePro™ ES

Having OE tooling for every manufacturer is expensive and it's difficult to employ technicians with expertise in all major vehicle makes.

DrivePro™ ES offers OEM diagnostics connected to expert brand-specific support and remote programming services for all major makes.

Ensure the vehicle is repaired right the first time, every time with:

- OE Diagnostic Software
- Remote Programming
- ADAS Calibration
- IVS 360 Expert Support



SCHEDULE A DEMO

Email: sales@opusivs.com

Phone: 1-844-235-4255 (opt.3)



OPUS | IVS opusivs.com

For more information visit VehicleServicePros.com/21086400

Introducing the Platinum Series... Unlike anything else.

Platinum S20



More powerful

Faster

Greater durability

Platinum S10



Platinum HD



Platinum S6




OEM
Diagnostics


HD Coverage


Maintenance
Resets

ADAS
ADAS


Bidirectional
communication


Bidirectional
communication

For more information visit VehicleServicePros.com/21125257

See what makes the Platinum series different
than other tools & sign up for incentive programs:

<http://bit.ly/thinkplatinum>

✉ info@thinkcarus.com

☎ 1-833-692-2766

THINKCAR

SCAN TOOL *SPEC GUIDE* 2021

CONTENTS

6 GLOBAL OBD-II SCAN TOOLS

12 PROFESSIONAL DIAGNOSTIC SCAN TOOLS

22 PRODUCTS

26 HEAVY DUTY DIAGNOSTIC SCAN TOOLS

34 COMPANY DIRECTORY



Welcome to the 2021 Scan Tool Spec Guide, brought to you by *Professional Tool & Equipment News*, *Professional Distributor*, and *Fleet Maintenance* magazines.

By Emily Markham, Assistant Editor

Diagnostic scan tools are a must for almost all vehicle services and repairs nowadays. Though a variety of tools are needed to perform any given work on a vehicle, using a scan tool to query for diagnostic trouble codes tends to be step one for most technicians.

Many shops own a multitude of scan tools – both OE and aftermarket. For some shops, it may make the most sense to own largely OE scan tools, while for many others, owning a scan tool with the ability to diagnose multiple vehicles is a better fit. In fact, in 2021's Aftermarket Profile study — found in the April issues of *PTEN* and *Professional Distributor* — 76 percent of shops stated they own aftermarket scan tools.

This year's Scan Tool Spec Guide provides information from 23 scan tool manufacturers. The tools fall into three categories: Global OBD-II, Professional Diagnostic, and Heavy Duty Diagnostic.

Every year, the technology of the scan tools in each of these categories continues to grow in proportion to the technology being introduced and improved upon in vehicles. Whether it's add-ons for a vehicle's infotainment center, more ADAS sensors placed around the vehicle, or the high-tech components found within hybrid and fully electric vehicles, technicians need tools that will keep up with that technology. Scan tools are the answer.

Regardless of whether your shop is buying its very first scan tool or what seems to be its hundredth, buying a scan tool is a big deal, and your decision should not be made lightly. While searching for the perfect scan tool to fit your shop, we hope this guide can serve as your go-to reference before making this very important decision.

ONE IS ENOUGH



ALL MAKES & ALL MODELS
D-PDU / RP1210 / DOIP / CAN FD
TOPOLOGY MAPPING FUNCTION
MULTIPLE ADD-ON MODULES

X-431 Throttle III

8 COMPATIBLE ADD-ON MODULES



X-431 ADAS PRO
 ADAS Calibration



X-431 ADAS Mobile
 ADAS Calibration



X-PROG 3
 Key Programming



BST360
 Battery Tester



X-431 TSGUN
 Complete TPMS Service



VSP600
 Videoscope



O2-1
 Oscilloscope



S2-2
 Sensorbox

- D-PDU / RP1210 / DoIP / CAN FD
- FCA Approved SGW Access
- 13.3-inch High-Resolution Screen
- 8 Compatible Add-on Modules
- Code Assist database by Identifix
- 8GB + 256GB Large Capacity Storage
- Topology Mapping Function
- VW & Audi Guided Function
- High-Capacity Dual 9360mAh Batteries
- Android 9.0 Open System
- Software Mall Service
- VCI Wi-Fi Connection

For more information visit VehicleServicePros.com/10094390

OBD-II DIAGNOSTIC

COMPANY	ALLDATA	Autel	AutoEnginuity	Automotive Test Solutions, Inc.	Bosch	CalPro ADAS Solutions
PRODUCT NAME	ALLDATA Mobile	MaxiCheck MX808	Giotto	eSCAN ELITE	OBD 1350 Pro Grade OBD-II Scan Tool	ADAS identiScan
Price						
\$0-\$100						
\$101-\$200			●			
\$201-\$300						
\$301-\$400					●	
\$401-\$500						
\$501-\$2,000		●		●		
(OR) Subscription (monthly cost)	\$39	\$124.50 Annually				\$79-\$109
Additional cost per update						
Scanning Functions (1996 to Present)						
Reads generic data and monitors (Mode 1)	●	●	●	●	●	
Displays freeze frame data (Mode 2)	●	●	●	●	●	
Reads DTCs (Mode 3)	●	●	●	●	●	
Clears all DTCs for all systems (Mode 4)	●	●	●	●	●	
Reads test results for oxygen sensors (Mode 5)	●	●	●	●	●	
Reads test results for other component/system monitoring (Mode 6)	●	●	●	●	●	
IF YES ABOVE: Provides test result definitions or raw hexadecimal data?		●	●	●	Definitions	
Reads pending DTCs (Mode 7)	●	●	●	●	●	
Bi-directional control (actuator tests) (Mode 8)	●	●	●	●	●	
Vehicle information - VIN # - (Mode 9)	●	●	●	●	●	●
Reads permanent DTCs (Mode 0A)	●	●	●	●	●	
Unit Features						
Unit type (PC-based, separate tablet/smartphone, standalone tablet)	User Defined (PC/ Tablet/Phone)	Standalone Tablet	PC / Tablet / Smartphone	PC-based	Handheld Scan Tool	Smartphone
Requires separate laptop or PC (Y or N)	Y	N	Y	Y	N	N
Operating system (Windows, Android, iOS)	Windows 10, Android 6 & above, iOS 13 & above	Android	Windows / iOS / Android	Windows	Proprietary	iOS / Android
Multilingual - on screen definitions in English/Spanish/French		●	English / Spanish	English	●	English
Internal battery included		●			Optional	
Length of time to fully charge unit		120 minutes				
Length of time unit runs on one charge (in hours)		4.5 hours				
Unit boot-up time (from "on" button to useable screen)	15 seconds	30 seconds			20 seconds	

	Cojali USA Inc.	FCAR TECH USA	LAUNCH TECH USA	Matco Tools	THINKCAR	TOPDON	XToolUSA	Zurich
	Jaltest Data-Link	HDC code+ V	Millennium Master	MaxLite	THINKSCAN 660	ArtiDiag 800BT	Nitro LT	ZR15 OBD2 Code Reader with Active Test/FixAssist
					●			●
		●						
			●	●		●		
	●						●	
				On-demand software				
							\$600	
	●	●	●	●	●	●	●	●
	●	●	●	●	●	●	●	●
	●	●	●	●	●	●	●	●
	●	●	●	●	●	●	●	●
	●	●	●	●	●	●	●	●
	●	●	●	●	●	●	●	●
	●	●	●	●	●	●	●	Definitions
	●	●	●	●	●	●	●	●
	●	●	●	●	●	●	●	●
	●	●	●	●	●	●	●	●
	●	●	●	●	●	●	●	●
	●	●	●	●	●	●	●	●
	PC-based	Standalone Handheld	Standalone Tablet	Standalone Tablet	Handheld	Standalone Tablet	Standalone Tablet	Handheld
	Y	N	N	N	N	N	N	For updates
	Windows	Android	Android	Android 7.1	ARM	Android	Android	Proprietary
	●	●	●	●	●	●	●	●
	PC-dependent		●	●		●	●	●
	PC-dependent		180 minutes	60 minutes		180 minutes	60 minutes	
	PC-dependent		6 hours	2 hours, powers from vehicle		10 hours	10 hours	
	30 seconds	10 seconds	20 seconds	35 seconds	20 seconds	35 seconds	17 seconds	5 seconds

OBD-II DIAGNOSTIC

COMPANY	ALLDATA	Autel	AutoEnginuity	Automotive Test Solutions, Inc.	Bosch	CalPro ADAS Solutions
PRODUCT NAME	ALLDATA Mobile	MaxiCheck MX808	Giotto	eSCAN ELITE	OBD 1350 Pro Grade OBD-II Scan Tool	ADAS identiScan
High-resolution color screen		●		●	●	
Touchscreen interface	●	●		User defined		
Screen size (in inches)	Tablets 7" and above, phones 6" and above	7"		User defined	3.5"	
Print diagnostic report via (cable, Wi-Fi, PC, app)		PC	●	●	PC	●
USB port		●		●	●	
VGA port						
HDMI port						
VCI - unit-to-car capabilities (wired or wireless)	●	●	●	●		
Internet (Wi-Fi, ethernet, both)	●	●		●		Wi-Fi
Software, Website, Support & Service Features						
Manufacturer's warranty (length of time, in years)	3 years for hardware	1 year	1 year	1 year	1 year	
Date range of vehicles covered (Pre-OBD-II, OBD-II, or Both)	OBD-II	OBD-II	Both	OBD-II	OBD-II	OBD-II
Call-in support (provide U.S. phone number)	800-859-3282	855-288-3587	400-827-TOOL (8665)	505-265-5077	855-267-2483	844-422-5776
Remote support for device	●	●		●		
Remote diagnostics & repair support	●	●		As needed		
In-person field/rep support	●	●			●	
Support cost (Included, per use, subscription-based)	Included	Included	Included	Included		Included
Updatable via the Internet	●	●	●	●	●	●
Updates subscription based (Y or N)		Y	Y	N	N	N
Updates: Optional or mandatory		Optional	Optional	Optional	Optional	Mandatory
Optional repair solution database (list all that apply)	●	●			CodeConnect	
Supplemental repair instructions/videos	●	●		●		
Includes the following repair information services - e.g. Identifix, Mitchell 1, etc. (list all that apply)	ALLDATA	MaxiFix				
Interfaces with the following shop management systems (list all that apply)						
Most Important Feature	Seamless integration with ALLDATA Repair & Collision	Diagnostics, services in Android platform	OE-level coverage for 58 carmakers	Drivability tool that makes you money	Enhanced powertrain and ABS datastream coverage	Quickly identifies ADAS features & required calibrations

	Cojali USA Inc.	FCAR TECH USA	LAUNCH TECH USA	Matco Tools	THINKCAR	TOPDON	XToolUSA	Zurich
	Jaltest Data-Link	HDC code+ V	Millennium Master	MaxLite	THINKSCAN 660	ArtiDiag 800BT	Nitro LT	ZR15 OBD2 Code Reader with Active Test/FixAssist
	PC-dependent	●	●	●	●	●	●	
	PC-dependent	●	●	●		●	●	
	Auto adjust to screen	5"	5"	5"	3.5"	6"	8"	3.5"
	PC	●	●	●	●	●	●	App - Repair Solution 2
	●	●			●	●	●	●
	PC-dependent						●	
	PC-dependent						●	
	●	Wired	Wired	Wired to car	Wired	Wireless	Wired	Wired
	●	●	Wi-Fi	Wi-Fi		Wi-Fi	Wi-Fi	
	1 year	2 years	1 years	2 years	1 year	1 year	1 year	1 year
	Both	Both	Both	OBD-II	OBD-II	OBD-II	Both	OBD-II
	800-975-7651	844-322-7872	877-528-6249	877-853-3738	833-692-2766	833-629-4832	888-416-6950	888-866-5797
	●	●	●	●		●	●	
	●	●		With subscription			●	
	●	●	●	●	●	●	●	
	Included	Included	Included	Included		Included	Subscription based	
	●	●	●	●	●	●	●	●
	Y	Y	Y	Basic mode free updates, on-demand software per manufacture	Included	Y	Y	N
	Optional	Optional	Optional	Optional	Optional	Optional	Optional	Optional
	Jaltest INFO Online			MaxFix, Codeassist	DTC Database			
	●			●	●	●	●	
	Jaltest INFO Online / Jaltest University			MaxFix, Codeassist Optional				Repair Solution 2 (app/ internet required)
	All-makes, all-systems diagnostics for heavy duty vehicles	Reads codes for most OEMs	Reads codes for most OEMs	Advanced and powerful code reader	Reads codes for most OEMs	28 maintenance functions and access to most modules	Programs keys and has bidirectional capabilities	All system code scan

KEYS MADE HERE

DELIVERIES
AROUND
BACK

DO NOT
BLOCK
BAY
DOORS

AUTO REPAIR

A FULL SERVICE

REPAIR FACILITY

EVERYTHING YOUR SHOP NEEDS.

PROGRAMMING & KEY MAKING SIMPLIFIED.



NITROUS
KEYS &
REMOTES



TRITON
KEY CUTTING
MACHINE



NITRO XT
SCAN TOOL



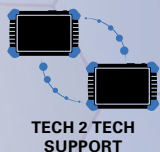
For more information visit VehicleServicePros.com/21114208

THE PERFECT ACCESSORIES FOR YOUR SCAN TOOL.

CONTACT YOUR DISTRIBUTOR TO UPGRADE YOUR SHOP OR VISIT XTOOLUSA.COM/KEYMAKINGSYSTEM TO LEARN MORE

MAXIMUS 4.0

MATCO'S MOST POWERFUL SCAN TOOL YET!



PRE & POST REPAIR HEALTH REPORTS



DIAGNOSTIC FEEDBACK



AUTOMATIC UPDATES

MDMAX4CL/MDMAX4CLHD/MDMAX4HD
MAXIMUS 4.0 TABLET SCAN TOOL

Maximus 4.0 is the complete diagnostic package. Includes 4-Channel Oscilloscope, battery analyzer and access to the MaxFix repair database.

MAXIMUS FIX INCLUDED



BLUETOOTH® ENABLED BATTERY ANALYZER



HIGH LEVEL 4-CHANNEL OSCILLOSCOPE



- 13.3" screen
- Android 9.0 OS
- 8GB memory/256GB storage
- Dual-band Wifi
- 8-megapixel front camera

- 13-megapixel back camera
- Up to 8 hours of battery life
- Includes 8 new background colors
- Security Gateway & Can FD

- 6-Pin & 9-Pin connectors included in all models
- Kickstand
- Steering wheel mount
- Handle

For more information visit VehicleServicePros.com/10095267

For more information talk to your Matco Tools Distributor or visit www.matcodiagnostics.com

MATCO TOOLS

PROFESSIONAL DIAGNOSTIC

COMPANY	ALLDATA	AUTEL	AutoEnginuity	Autoland Scientech	Bosch	CanDo Diagnostics	Continental Automotive Systems
PRODUCT NAME	ALLDATA Diagnostics	MaxiSYS MS909	Giotto ProLine	iSCAN SF	ADS 625X	CPro	Autodiagnos Pro
Price							
Under \$500	●						
\$501-\$1,000						●	
\$1,001-\$3,000			●				●
\$3,001-\$5,000		●		●	●		
\$5,001-\$7,000							
\$7,001-\$9,000							
\$9,001 to \$10,000							
More than \$10,000							
(OR) Subscription (monthly cost)	\$239	\$1,295 Annually					
Additional cost per update			\$450	\$799	\$750	\$499	\$699 Annually
Scanning Functions (1996 to Present)							
Fully supports all 10 modes of OBD-II scan tool operation (Mode 1 through Mode OA)	●	●	●	●	●	●	●
Other Functions							
Supports service functions and relearns needed for factory service	●	●	●	●	●	●	●
Inspection/reset light function	●	●	●	●	●	●	●
J2534 reflash and pass-thru diagnostic capability		●		●	●		
Is an OEM subscription required to access J2534 reflash and pass-thru diagnostic capabilities? Y/N	N	Y (Mercedes and BMW included)	N	Y	Y	N	N
Does the tool come with its own J2534 interface? Y/N	N	Y	N	Y	Y	N	N
J2534 reflash completed by technician? Y/N	N	Y	N	Y	Y	N	N
J2534 reflash completed as a remote service? Y/N	N	Y	N	Y	N	N	N
Record and play back data	●	●	●	●	●	●	●
Graphs live data on screen	●	●	●	●	●	●	●
Graphs multiple PIDs on screen simultaneously (list how many)	25	3	8	12	8	4	No limit
Has ability to graph-merge PIDS		●	●		●	●	●
User-selectable units (SAE, metric)	●	●	●	●	●	●	●
Pre- and Post-scan reports	●	●	●	●	●	●	●
Remote diagnostic support		●		●		●	
Security-based module programming support? Y/N	N	Y	N	Y	N	N	N
Specific System Coverage Data and Bi-Directional Controls							
ADAS calibration (Indicate number of manufacturers for each.)							
Domestic	20	10 w/optional software and frame purchase	10	3	3		12
European	26	12 w/optional software and frame purchase	8	8	8		2
Asian	15	10 w/optional software and frame purchase	11	7	7		12
Body control module (Indicate number of manufacturers for each.)							
Domestic	20	10	17	3	3	12	13
European	26	38	13	21	8	27	3
Asian	15	26	14	14	7	17	11

AUTEL MAXISYS™

SMARTER DIAGNOSTICS

STARTS HERE



12.9" SCREEN / ANDROID 7

AUTEL MAXISYS™
ULTRA

MAXIFLASH VCM1
FIVE-IN-ONE VCM1



AUTEL.COM | 855.288.3587
@AUTELTOOLS
©2021 AUTEL U.S. INC., ALL RIGHTS RESERVED



AVAILABLE NOW! CONTACT YOUR LOCAL DISTRIBUTOR FOR DETAILS

BT608

AUTEL MAXIBAS BATTERY & ELECTRICAL SYSTEM ANALYZER



**ADAPTIVE LOAD
& CONDUCTANCE**



**BMS RESET
FUNCTIONALITY**



**SYSTEM
DETECTION**

POWERED BY
AUTEL
DIAGNOSTICS



*THE BT608 & BT609 ARE
ALSO COMPATIBLE WITH
MAXISYS TABLETS*

BATTERY & ELECTRICAL SYSTEM DIAGNOSTICS

- 5.5" TOUCHSCREEN / ANDROID 9.0 / WI-FI SOFTWARE UPDATES
- TEST 6 & 12 VOLT BATTERIES: 100 - 3000 CCA
- TEST 12 & 24 VOLT CRANKING / CHARGING SYSTEMS

FASTER VEHICLE ID: AUTOVIN & VINSKAN

- BATTERY SPECIFIC SYSTEM & LOCATION CONFIRMATION
- TEST BATTERY / CHARGING SYSTEM FOR PROPER FUNCTION
- ELECTRICAL SYSTEM RESET



MAXISYS MS919

- 9.7" SCREEN / ANDROID 7
- INTELLIGENT DIAGNOSTICS
- FIVE-IN-ONE VCM



MAXISYS MS909

- 9.7" SCREEN / ANDROID 7
- INTELLIGENT DIAGNOSTICS
- NEW PROTOCOLS

TABLETS FEATURE TOPOLOGY MODULE MAP

INTELLIGENT DIAGNOSTICS

- REPAIR ASSIST
- GUIDED DIAGNOSTICS

- ALL SYSTEM STATUS SCREEN
- COLOR CODED FAULTS

POWERFUL HARDWARE

- OCTA-CORE PROCESSOR
- MEMORY: 128GB (MS909/MS919)
256GB (ULTRA)

For more information visit
VehicleServicePros.com/
10095724



AUTEL

PROFESSIONAL DIAGNOSTIC

COMPANY	ALLDATA	AUTEL	AutoEnginuity	Autoland Scientech	Bosch	CanDo Diagnostics	Continental Automotive Systems
PRODUCT NAME	ALLDATA Diagnostics	MaxiSYS MS909	Giotto ProLine	iSCAN SF	ADS 625X	CPro	Autodiagnos Pro
Chassis/braking system control (Indicate number of manufacturers for each.)							
Domestic	20	10	17	3	3	12	12
European	26	38	13	21	8	27	2
Asian	15	26	14	14	7	17	8
Powertrain control module (Indicate number of manufacturers for each.)							
Domestic	20	10	17	3	3	12	15
European	26	38	13	21	8	27	3
Asian	15	26	14	14	7	17	13
SRS coverage (Indicate number of manufacturers for each.)							
Domestic	20	10	17	3	3	12	15
European	26	38	13	21	8	27	3
Asian	15	26	14	14	7	17	13
HVAC/climate control (Indicate number of manufacturers for each.)							
Domestic	20	10	17	3	3	12	15
European	26	38	13	21	8	27	3
Asian	15	26	14	14	7	17	13
Exotic European Coverage (Indicate number of manufacturers for each.)							
Domestic	20		10				
European	26	7	12	5		4	
Asian	15	1	11	1			
Unit Features							
Unit type (PC-based, separate tablet/smartphone, standalone tablet)	User defined (PC/Tablet/Phone)	Standalone Tablet	PC / Tablet / Smartphone	Standalone Tablet	Standalone Tablet	Standalone Tablet	PC-based / Standalone Tablet
Requires separate laptop or PC (Y or N)	Y	N	Y	N	N	N	Y
Operating system (Windows, Android, iOS)	Windows 10, Android 6 & above, iOS 13 & above	Android	Windows / iOS / Android	Android	Android	Android	Windows
Storage (in GB)		128GB		Unlimited (External USB)	32GB	32GB	128GB
Expandable storage		32GB		●	512GB	Expandable to 128GB	MicroSDXC card reader
Multilingual - on screen definitions in English/Spanish/French		●	English / Spanish	●	●	English / Spanish	
Internal battery included		●			●	●	●
Length of time to fully charge unit		180 minutes			180 minutes	60 minutes	
Length of time unit runs on one charge		8 Hours			14 hours	12 hours	9 hours
Unit boot-up time (from "on" button to usable screen)	15 seconds	20 seconds		Less than 30 seconds	45 seconds	30 seconds	
High-resolution color screen		●		●	●	●	●
Touchscreen interface	●	●		●	●	●	●
Screen size (in inches)	Tablets 7" and above, phones 6" and above	9.7"		8"	10"	8"	10"
Print diagnostic report via (cable, Wi-Fi, PC, app)		●	●	●	●	●	Wi-Fi, app

FCAR TECH USA	Injectronic	LAUNCH TECH USA	Matco Tools	Opus IVS	Snap-on	TEXA USA	THINKCAR	TOPDON	XToolUSA	Zurich
HDC Pad VII Pro	CJ8K	X431 THROTTLE III	MDMAX4CL	DrivePro ES	ZEUS	TEXA IDC5 CAR	Platinum S10	Phoenix Plus	Nitro GT	ZR-PRO 8" Professional Automotive Scanner
10	3	8	8	ALL	18	12	10	10	13	9
8	35	20	20	ALL	12	22	8	44	33	23
5	62	16	16	ALL	15	14	5	72	23	18
10	3	8	8	ALL	19	12	10	10	13	9
8	35	20	20	ALL	12	25	8	44	33	23
5	62	16	16	ALL	16	14	5	72	23	18
10	3	8	8	ALL	18	12	10	10	13	9
8	35	20	20	ALL	12	22	8	44	33	23
5	62	16	16	ALL	15	14	5	72	23	18
10	3	8	8	ALL	16	12	10	10	13	9
8	35	20	20	ALL	12	22	8	44	33	23
5	62	16	16	ALL	13	14	5	72	23	18
10	3	1	1			3	10	●		
8	35	9	9	2		12	8	●	8	11
5	62						5	●		
Standalone Tablet	Standalone Tablet	Standalone Tablet	Standalone Tablet	Standalone Tablet	Standalone Tablet	Standalone Tablet	Standalone Tablet	Standalone Tablet	Standalone Tablet	Standalone Tablet
N	N	N	N	N	N	N	N	N	N	N
Android	Android	Android 9.0	Android 9.0	Windows 10	Windows	Windows 10	Android 10.0	Android	Android	Android
20GB	32GB	256GB	8GB	256GB	64GB	256GB	64GB	64GB	8GB	16GB
32GB	●	256GB	256GB		●	●			64GB	
●	●	●	●	●	●	●	●	●	●	●
●	●	●	●	●	●	●	●	●	●	●
180 minutes	180 minutes	160 minutes	60 minutes	150 minutes	300 minutes	120 minutes	120 minutes	5.5 hours	60 minutes	180 minutes
8 hours	8 hours	6 hours	6-8 hours	6 hours	5 hours	8 hours	8 hours	10 hours	8 hours	4 hours
20 seconds	30 seconds	26 seconds	22 seconds	Less than 60 seconds	30 seconds	45 seconds	30 seconds	44 seconds	17 seconds	45 seconds
●	●	●	●	●	●	●	●	●	●	●
●	●	●	●	●	●	●	●	●	●	●
10"	8"	13.3"	13.3"	10.1"	10"	12"	10.1"	10"	10.1"	8"
●	●	Wi-Fi	●	●	●	●	●	●	WiFi	Wi-Fi

Take control of ADAS

Keep ADAS work in-house with Hunter ADASLink™ and DAS 3000.

HUNTER
Engineering Company

www.hunter.com/adas



For more information visit
VehicleServicePros.com/10095198

TOPDON

INNOVATION THROUGH INFORMATION TOPOLOGY MODULE MAPPING

- Android OS/ 10" Screen
- Quickly identify module/ CAN BUS issues
- Wireless VCI Communication
- OE Level Vehicle Coverage/ ADAS Ready
- Advanced Bi-Directional and Coding Functions
- Quick Access Resets/ Single Touch Code Search



PHOENIX PLUS

SINGLE SCREEN MODULE STATUS LIST

@TopdonUSA

@topdonusa

www.topdonusa.com

www.topdon.com

@topdonusa

TOPDON USA SUPPORT
CONTACT US TODAY TO
SCHEDULE A DEMO **833-629-4832**

VIDEO TRAINING
YOUTUBE @Topdon USA

For more information visit VehicleServicePros.com/21080115

PROFESSIONAL DIAGNOSTIC

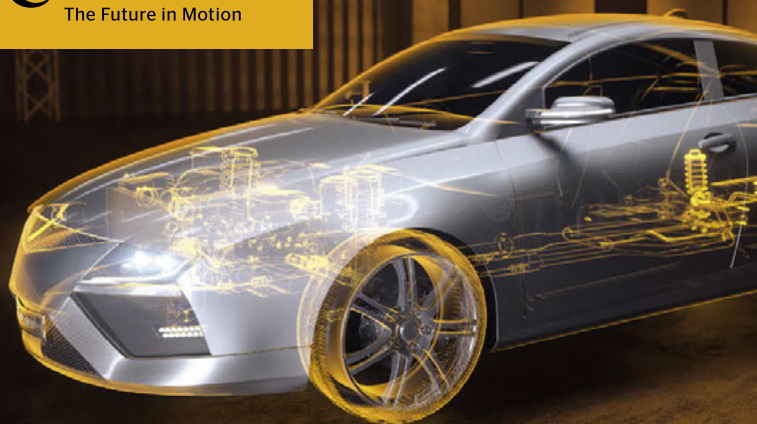
COMPANY	ALLDATA	AUTEL	AutoEnginuity	Autoland Scientech	Bosch	CanDo Diagnostics	Continental Automotive Systems
PRODUCT NAME	ALLDATA Diagnostics	MaxiSYS MS909	Giotto ProLine	iSCAN SF	ADS 625X	CPro	Autodiagnos Pro
USB port		●		●	●	●	●
VGA port							
HDMI port		●				●	
VCI - unit-to-car capabilities (wired or wireless)	●	●	●	Wired	Wireless	●	●
Internet (Wi-Fi, ethernet, both)	●	●		●	Wi-Fi	●	Wi-Fi
Available Tool Add-Ons							
5-gas analyzer							
TPMS resets/relearns	●	●	●		●	●	
TPMS programming		●	●		●	●	
Labscope capability		●					
Multimeter		●					
Complete multimeter functions, including amperage							
Software, Website, Support & Service Features							
Manufacturer's warranty (length of time, in years)	3 years for hardware	1 year	1 year	2 years	Lifetime	1 year	1 year
Date range of vehicles covered (Pre-OBD-II, OBD-II, or Both)	OBD-II	OBD-II	Both	Both	Both	Both	OBD-II
Call-in support (provide U.S. phone number)	800-859-3282	855-288-3587	480-827-T00L (8665)	888-472-2644	855-267-2483	909-Cando11	800-265-1818
Remote support for device	●	●		●	●	●	●
Remote diagnostics & repair support	●	●		●		●	
Create support ticket on device		●		●	Coming 2H 2021		
In-person field/rep support		●		●	●	●	
Support cost (Included, per use, subscription-based)	Included	Included		Per use	Included		Included
Updatable via the Internet	●	●	●	●	●	●	●
Updates subscription based (Y or N)	Y	Y	Y	Y	Y	Y	Y
Updates: Optional or mandatory	Optional	Optional	Optional	Optional	Optional	Optional	Mandatory
Optional repair solution database (list all that apply)	●	●			Repair-Source, Identifix	Motor	
Supplemental repair instructions/videos	●	●		●	●	●	
Includes the following repair information services - e.g. Next-Step, Mitchell 1, Identifix, ALLDATA, etc. (list all that apply)	ALLDATA	Intelligent Diagnostics, MaxiFix			Repair-Source, Identifix	Motor	
Interfaces with the following shop management systems (list all that apply)					Shopware		
Most Important Feature	Seamless integration with ALLDATA Repair & Collision	Expansive coverage, active test, coding & adaptations	OE-level coverage for 58 carmakers	See the complex turn simple with iSCAN	Complete coverage, repair information, and ADAS ready.	Fully-loaded, bidirectional & wireless for under \$1,000	OEM data, fast, intuitive, module autodetect feature

FCAR TECH USA	Injectronic	LAUNCH TECH USA	Matco Tools	Opus IVS	Snap-on	TEXA USA	THINKCAR	TOPDON	XToolUSA	Zurich
HDC Pad VII Pro	CJ8K	X431 THROTTLE III	MDMAX4CL	DrivePro ES	ZEUS	TEXA IDC5 CAR	Platinum S10	Phoenix Plus	Nitro GT	ZR-PRO 8" Professional Automotive Scanner
●	●	●	●	●	●	●	●	●	●	●
●					●	●			●	
●	●	●	●		●	●			●	
●	Wireless	Wireless	Wireless	Wired	●	●	●	●	Wireless	Wireless
●	Wi-Fi	Wi-Fi	Wi-Fi	●	●	●	●	Wi-Fi	Wi-Fi	Wi-Fi
●	●				●	●				
●	●	●	●		●	●	●	●	●	
	●	●	Optional		●	●	●	●	●	
	●	●	●		●		●	●		
	●	●	Optional		●					
	●		Optional		●					
2 years	1 year	1 year	2 years	Covered while subscribed	2 years	1 year	2 years	1 year	1 year	1 year
Both	Both	Both	Both	OBD-II	Both	Both	Both	OBD-II	Both	OBD-II
844-322-7872	915-208-5451	877-528-6249	877-853-3738	877-945-6442	800-424-7227	855-200-8392	833-692-2766	833-629-4832	888-416-6950	877-987-4248
●	●	●	●	●	●	●	●	●	●	
●	●	●	●	●	●	●	●	●	●	
●	●	●	●	●		●	●	●	●	●
●	●	●	●	●	●	●	●	●	●	
Included	Included	Included	Included	Subscription based	Included	●	Included	Included	Subscription based	Included
●	●	●	●	●	●	●	●	●	●	●
Y	Y	Y	Y	Y	Optional	Y	Y	Y	Y	Y
Optional	Optional	Optional	Optional	Optional	Optional	Optional	Optional	Optional	Optional	Optional
Motor, Alldata, Mitchell1	●	Identifix, ALL DATA	MaxFix included	●	●	TEXA				Browser based
	●	●	●	●	●	●	●	●	●	●
Optional		Identifix	MaxFix, Code Assist, Pro Assist	IVS 360 live brand-specific support, plus shortcut icon links to Diagnostic Network, AllData, Mitchell, Motologic, ShopKey	Mitchell 1	TEX@info				Browser based
Bidirectional capabilities for most OEMs	Multiple scan tools in one	Bidirectional capabilities for most OEMs	The fastest and strongest member of the Maximus family	Live brand-specific repair support and remote programming services.	Fast-track intelligent diagnostics	Quality solution for ADAS and regular diagnostics	Bidirectional capabilities for most OEMs	View all modules by Topology or AutoScan	Programs keys and has J2534 capabilities	Affordable, comprehensive & bidirectional

WORKS ON MOST VEHICLES INCLUDING EXOTICS

The **XToolUSA Nitro XT Scan Tool** is a 10.1" professional bidirectional scan tool featuring Smart Key programming, a military grade aluminum housing, pre- and post-scan reports, automatic vehicle ID, a special functions page, weekly updates, and remote diagnostics. The scan tool uses an open Android system to download third party applications. It comes with a wireless Bluetooth connector and has a four core processor, 4G of ram, and 64G of flash memory. The scan tool works on domestic, Asian, and European vehicles including exotics. It comes in a plastic case with a full array of connectors and cables.

For more information visit VehicleServicePros.com/21123808



**Autodiagnos™ Pro
Automotive Diagnostic System**

**Technician-friendly scan tool
that increases productivity.**



*Subscription based model -
no large hardware investment!*

- Fast - DTCs reported in 20-30 seconds on average
- Accurate data in list, graph and gauge formats
- Based on OEM platform used in dealerships worldwide
- USA designed, developed, manufactured and supported

Learn more: www.AutodiagnosPro.com

Autodiagnos Pro - A Trademark of the Continental Corporation

**PROVIDES ADVANCED
DIAGNOSTICS
FOR 75 BRANDS**

The **Motorscan MemoBike 6050 Diagnostic Scan Tool Kit**, No. MS6050R17, from **Ansed Diagnostic Solutions** is a handheld instrument designed to allow technicians to perform factory service procedures. The scan tool displays ECU data, reads and erases stored faults, resets service lights, allows injection adjustment, identifies valve positions, programs new keys, ABS air purge testing, and more. The user-friendly device provides advanced diagnostics for 75 brands, over 5,000 models, and more than 15,000 applications. The kit comes with the MemoBike 6050 Scan Tool and unlimited software, as well as the master, universal, battery, and USB cables and all in a durable hard plastic carrying case.

**For more information visit
VehicleServicePros.com/21139242**

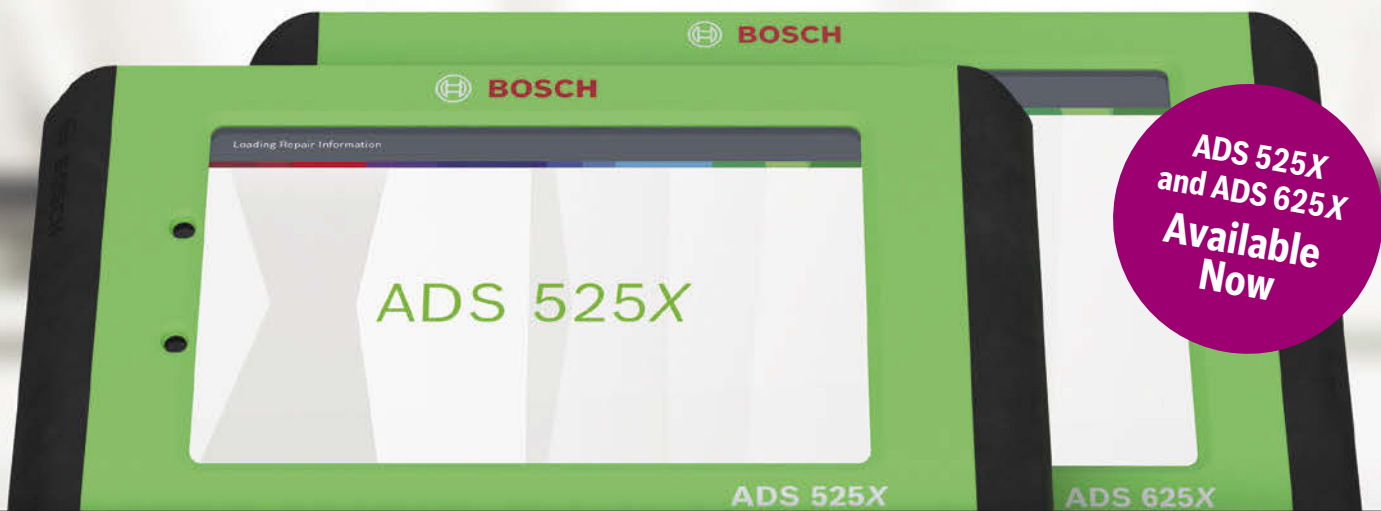


For more information visit VehicleServicePros.com/10122858

ALL-NEW ADS X

Turn your diagnostic powers into superpowers.

Go from technician to superhuman diagnostic machine with your new secret weapon. Just remember, with great power comes great diagnosability.



Extreme speed

- ▶ Average all-system scans in under 60 seconds
- ▶ Redesigned wireless VCI for faster, more efficient diagnosing

Extreme flexibility

- ▶ Battery life for weeks
- ▶ Modular software subscriptions for what you need most

Extreme access

- ▶ 100% OE-approved for secure gateway access
- ▶ Industry-leading vehicle coverage back to 1976



BOSCH
Invented for life

Uncover the truth about the all-powerful X
boschdiagnostics.com/ads-x

For more information visit VehicleServicePros.com/10122252

TECHNICAL SPECIFICATIONS FOR VEHICLE REPAIRS

Topdon ArtiPAD PRO Quick-Fix powered by MOTOR features technical specifications for vehicle repairs and software for wiring diagrams, chassis diagrams, wheel alignment procedures, and brake repair information and instructions. Quick-Fix includes maintenance schedules that allow technicians to estimate maintenance and service schedules as well as expenses with repair time estimates for labor operations. Quick-Fix service procedures provide standard OEM maintenance and repair information that lets the technician complete the repair with step-by-step instructions and access the data via an app within the ArtiPAD interface. Illustrations in the software educate technicians on part locations, electrical problems, and troubleshoot the repair.

For more information visit VehicleServicePros.com/21112779



INCLUDES ACCESS TO INNOVA'S KNOWLEDGE BASE

The Innova 5610 CarScan Pro

is a scan tool designed to help technicians find and fix problems more efficiently. More than a standalone tool, it includes access to Innova's RepairSolutions2 knowledge base of over 60 million verified fixes. With 5610, users receive vehicle-specific inspection reports with fixes, guided diagnostics, and troubleshooting information. Advanced features include oil life, brake pad life, battery voltage, TPMS status, and live data. Fixes for body and chassis codes and full network scan results are available for supported vehicles. Factory and NHTSA recalls, TSBs, service maintenance, and predictive diagnostics help shops alert customers of potential issues.

For more information visit VehicleServicePros.com/21164504



The Wait is Over. Introducing the HD Pro III.

1EN FOR CANDOPROIII

Introducing the **HD Pro III** our latest all-in-one, do-it-all scan tool, covering class 4-8 commercial vehicles and off-highway machinery, such as mining and farming equipment. The **HD Pro III** is a wired Android tablet, perfect for those in a budget, looking to perform bi-directional controls and change & set parameters, diagnose hydraulic systems, brake systems, and perform VGT calibrations and DPF resets/regeneration. What's even better is that it now comes with **Two years of Motor's FleetCross Service** - a premier repair information database accessible from within the **HD Pro III**. Two years of software updates and all cables and connectors are included.

2 Years Motor FleetCross | 2 Years Software Updates | Class 4-8 HD & Agri-Industrial

Full Engine/ Brakes/ Transmission/ BCM Coverage with Bi-Directional Controls, Adaptations and Special Functions



WATCH NOW



www.candointl.com • 909-Cando-11 (226-3611)

2 YRS OF SOFTWARE UPDATES! CABLES & CONNECTORS INCLUDED

For more information visit VehicleServicePros.com/11078899



MAXIMIZE UPTIME

UPGRADE YOUR REPAIR PROCESS.

Improve your shop efficiency to maximize uptime. Pair JPRO® Professional with NextStep® Repair for the most comprehensive diagnostic and repair tool available today. JPRO gives technicians the tools to thoroughly diagnose and troubleshoot vehicle issues and NextStep Repair's step-by-step instructions remove the guesswork from repair work.



JPRO
PROFESSIONAL



NEXTSTEP
REPAIR



NOREGON
VEHICLE DATA EXPERTS

For available discounts call: (855) 889-5776
Learn more: www.noregon.com/jpro

©2021 Noregon. JPRO and NextStep are registered trademarks of Noregon. All Rights Reserved.

For more information visit VehicleServicePros.com/10122188



**LEARN MORE /
VIEW COVERAGE**

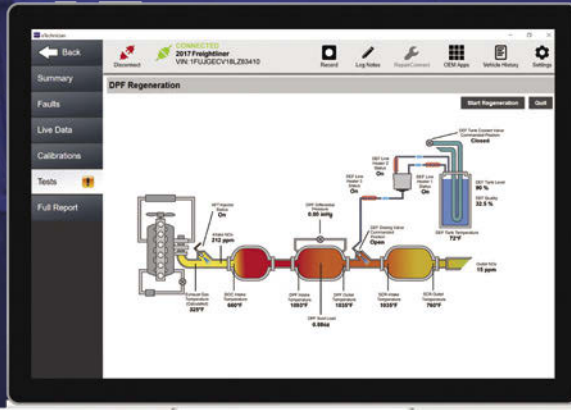
HEAVY DUTY DIAGNOSTIC

COMPANY NAME	Autel	Bosch	CanDo Diagnostics	Cojali USA Inc.	
PRODUCT NAME	MaxiSYS MS906CV	ESI Truck	HD Pro Tab	Jaltest CV	
Price					
Under \$500					
\$501-\$1,000					
\$1,001-\$3,000	●				
\$3,001-\$5,000					
\$5,001-\$7,000			●	●	
\$7,001-\$9,000					
\$9,001 to \$10,000		●			
More than \$10,000					
(OR) Subscription (monthly cost)	\$795 Annually				
Additional cost per update		\$1,200	\$1,000	\$995	
Enhanced/Proprietary Coverage					
Engine Modules - Heavy Duty					
Caterpillar	●	●	●	●	
Cummins	●	●	●	●	
Detroit Diesel	●	●	●	●	
International/Navistar	●	●	●	●	
Kenworth/Peterbilt (PACCAR)	●	●	●	●	
Mack/Volvo	●	●	●	●	
Engine Modules - Medium Duty					
Chrysler	●	●	●	●	
Cummins	●	●	●	●	
Ford	●	●	●	●	
GM	●	●	●	●	
Hino	●	●	●	●	
Isuzu	●	●	●	●	
International/Navistar	●	●	●	●	
Mitsubishi Fuso Truck of America	●	●	●	●	
Kenworth/ Peterbilt (PACCAR)	●	●	●	●	
Brakes					
Bendix	●	●	●	●	
Haldex	●	●	●	●	
Wabco	●	●	●	●	
Transmission					
Allison	●	●	●	●	
Eaton	●	●	●	●	

EXPERIENCE, INGENUITY, AND KNOW-HOW

NEXIQ Pocket HD™

Handheld Diagnostic Scan Tool
with "All Makes" DPF Regen



eTechnician™
The Most Advanced Truck
Diagnostics Software Available

USB-Link™ 2

The Commercial Vehicle
Industry's Leading VCI



NEXIQ First-Link™

Mobile Diagnostic App
The First-Link™ App Is Available on
the App Store and on Google Play



NEXIQ Blue-Link™
Mobile Vehicle Interface
9-pin and 16-pin



NEXIQ Blue-Link™ Mini
WINNER: 2017 PTEN
Innovation Award



**Delivering Industry-Leading Vehicle Diagnostic Solutions
for More Than 35 Years**

For more information visit
VehicleServicePros.com/10121770

NEXIQ
TECHNOLOGIES®

For more information, contact NEXIQ Technologies at 800-639-6774 or www.nexiq.com.

©2021 IDSC Holdings LLC. All rights reserved. NEXIQ Technologies is a registered trademark of IDSC Holdings LLC. All other marks are trademarks or registered trademarks of their respective holders. Pictures for illustration purposes only. Specifications subject to change without notice.



FIND YOUR FASTEST PATH TO FIXED.

Get all the information you need — and only what you need — the next time you need to make the right repair.

Only a system as smart as Fast-Track® Intelligent Diagnostics can filter a universe of vehicle-specific data, constantly updated through a convenient cloud-based platform, to help you make quick, confident repairs and get your customers back on the road.

No other company can match our data or our customer service, and no other company can make it all this easy to use. Bring more “flow” to your diagnostic workflow at diagnostics.snapon.com/id.



Fast-Track Intelligent Diagnostics from Snap-on.
Available on the APOLLO, TRITON and ZEUS.

**Smarter.
Faster.
Fixed.**



For more information visit VehicleServicePros.com/10095583

Snap-on is a trademark of Snap-on Incorporated. All rights reserved. ©Snap-on Incorporated 2021.

HEAVY DUTY DIAGNOSTIC

COMPANY NAME	Autel	Bosch	CanDo Diagnostics	Cojali USA Inc.	
PRODUCT NAME	MaxiSYS MS906CV	ESI Truck	HD Pro Tab	Jaltest CV	
Scanning Functions					
Reads trouble codes	●	●	●	●	
Displays vehicle information/VIN #	●	●	●	●	
Displays heavy duty standard codes	●	●	●	●	
Displays heavy duty proprietary codes	●	●	●	●	
Enhanced Bi-directional Controls					
Anti-lock brake system (ABS)	●	●	●	●	
Automatic transmissions	●	●	●	●	
Injector cutout	●	●	●	●	
Injector programming	●	●	●	●	
Manual/forced regeneration	●	●	●	●	
Replace DPF/ash reset	●	●	●	●	
SCR/DEF controls	●	●	●	●	
Trailer brakes (ABS/EBS)	●	●	●	●	
Calibrations for variable vane turbo (Choose all that apply: Cummins, Detroit Diesel, International/Navistar, PACCAR, Mack/Volvo) or ALL	ALL	ALL	ALL	ALL	
Live Data Stream - Digital					
Data logging	●	●	●	●	
Guided diagnostics	●	●	●	●	
Graphs live data on screen	●	●	●	●	
Graphs multiple values on screen simultaneously (list how many)	3	6	8	16	
Auto identification by VIN #	●	●	●	●	
Provides NOX values for diagnosis of emissions related failures	●	●		●	
Unit Features					
Unit type (PC-based, separate tablet/smartphone, standalone tablet)	Standalone Tablet	Standalone Tablet / PC-based	Standalone Tablet	PC-based	
Requires separate laptop or PC (Y or N)	N	N	N	Y	
Operating system (Windows, Android, iOS)	Android	Windows 10	Android	Windows	
Storage (in GB)	32GB	128GB	32GB	10GB	
Expandable storage	32GB	●	Expandable to 128GB	PC-dependent	
Multilingual - on screen definitions in English/Spanish/French	●	●	●	●	
Internal battery included	●	●	●	PC-dependent	
Length of time to fully charge unit	180 minutes	30 minutes	90 minutes	PC-dependent	
Length of time unit runs on one charge	8-10 hours	4 hours	8-10 hours	PC-dependent	
Unit powers off vehicle		●	●	●	
Unit boot-up time (from "on" button to usable screen)	20 seconds	40 seconds	5 seconds	30 seconds	
High-resolution color screen	●	●	●	PC-dependent	
Touchscreen interface	●	●	●	PC-dependent	
Screen size (in inches)	7.9"	10"	10.1"	Auto adjust to screen	
Print diagnostic report via (cable, Wi-Fi, PC, app)	●	Wi-Fi	Wi-Fi	PC-dependent	

HEAVY DUTY DIAGNOSTIC

COMPANY NAME	Autel	Bosch	CanDo Diagnostics	Cojali USA Inc.	
PRODUCT NAME	MaxiSYS MS906CV	ESI Truck	HD Pro Tab	Jaltest CV	
USB port	●	●	●	●	
VGA port			●	PC-dependent	
HDMI port	●	●	●	PC-dependent	
VCI - unit-to-car capabilities (wired or wireless)	Wired	●	Wireless	●	
Internet (Wi-Fi, ethernet, both)	Wi-Fi	●	●	PC-dependent	
Remote diagnostic support	●	●	●	●	
Available Tool Add-Ons and Cables					
3-pin Deutsch		Add-on	●	●	
6-pin Deutsch	●	●	●	●	
9-pin Deutsch (J1939 type 2)	●	●	●	●	
9-pin CAT Deutsch		●	●	●	
8-pin Volvo		Add-on	●	●	
14-pin Volvo		Add-on	●	●	
Automotive 16-pin J1962	●	●	●	●	
Mack/Volvo 16-pin J1962	●	●	●	●	
Labscope capability	●			●	
Multimeter				●	
ADAS capability		●	●	●	
OBD-II	●	●	●	●	
Software, Website, Support & Service Features					
Manufacturer's warranty (length of time, in years)	1 year	1 year	2 years	1 year	
Date range of vehicles covered (Pre-OBD-II, OBD-II, or Both)	OBD-II	Both	Both	Both	
Call-in support (provide U.S. phone number)	855-288-3587	855-267-2483	909-Cando11	800-975-7651	
Remote support for device	●	●	●	●	
Remote diagnostics & repair support	●		●	●	
Create support ticket on device	●	●	●	●	
In-person field/rep support	●	●	●	●	
Support cost (Included, per use, subscription-based)	Included	Included		Included	
Updatable via the Internet	●	●	●	●	
Updates subscription based (Y or N)	Y	Y	Y	Y	
Updates: Optional or mandatory	Optional	Optional	Optional	Optional	
Optional repair solution database (list all that apply)	●	●	●	Jaltest INFO Online	
Supplemental repair instructions/videos	●	●	●	●	
Includes the following repair information services - e.g. NextStep, Mitchell 1, etc. (list all that apply)	MaxiFix	Optional - Bosch Troubleshooting	Motor FleetCross	Jaltest INFO Online/ Jaltest University	
Most Important Feature	Advanced diagnostics & services for heavy duty vehicles	Advanced diagnostics for trucks and off-highway vehicles	Class 4-8 and off-highway in one tool	One click full system scan	

	FCAR TECH USA	LAUNCH TECH USA	Matco Tools	NEXIQ	Noregon	TEXA USA	THINKCAR
	F7SN Pro	X431 AutoHD	MdMAX4HD	PRO-LINK Edge	JPRO Professional	TEXA IDC5 TRUCK	Platinum HD
	●	●	●	●	●	●	●
					●	●	
	●		●	●	●	●	
	Wireless	Wireless	Wireless	Wired	Wired	●	●
	●	Wi-Fi	Wi-Fi	Wi-Fi	●	●	●
	●	●		●	●	●	●
	●	●	Optional	●	●	●	●
	●	●	●	●	●	●	●
	●	●	●	●	●	●	●
	●	●	Optional	●	●	●	●
	●	●	Optional	●	●	●	●
	●	●	Optional	●	●	●	●
	●	●	Optional	●	●	●	●
	●	●	Optional	●	●	●	●
			●		●		
			Optional				
		●	Optional		●	●	●
	●	●	HD-OBD	●	●	●	●
	2 years	1 year	2 years	1 year	Laptop 3 years, adapter 1 year	1 year	2 years
	Both	Both	Both	Both	Both	Both	Both
	844-322-7872	877-528-6249	877-853-3738	800-311-5452	855-889-5776	855-200-8392	833-692-2766
	●	●	●	●	●	●	●
	●	●		●	●	●	●
	●	●	●	●	●	●	●
	●	●	●	●	●	●	●
	Included	Included	Included	Included	Included	Included	Included
	●	●	●	●	●	●	●
	Y	Y	Y	N	Y	Y	Y
	Optional	Optional	Optional	Optional	Mandatory	Optional	Optional
	Motor, Mitchell1, Alldata	Identifix, ALL DATA	Optional	Mitchell 1 Repair Connect	Fault Guidance (Included in JPRO) NextStep Repair (Additional subscription)	TEX@INFO	●
		●	Optional		●	●	●
	Optional	Identifix	Optional	Mitchell 1	NextStep Repair	TEX@INFO	
	Bidirectional control with most HD OEMs	Bidirectional control with most HD OEMs	The fastest and strongest member of the Maximus family	Comprehensive handheld	User-friendly diagnostics w/ pro-level functionality	Tough hardware, remote regenerations, off-highway/ car coverage available	Bidirectional control with most HD OEMs

COMPANY DIRECTORY

ALLDATA
alldata.com

Autel
autel.com

AutoEnginuity
autoenginuity.com

Autoland Sciencetech
autolandsciencetechusa.com

Automotive Test Solutions
automotivetestsolutions.com

Bosch/OTC
boschdiagnostics.com

CalPro ADAS Solutions
calproadassolutions.com

CanDo International
candointl.com

Cojali USA
jaltest.com

Continental Automotive Systems
autodiagnospro.com

FCAR Tech USA
fcarusa.com

Injectronic
injectronictech.com

Launch Tech USA
launchtechusa.com

Matco Tools
matcotools.com

NEXIQ
nexiq.com

Noregon Systems
noregon.com

Opus | IVS
opusivs.com

Snap-on Diagnostics
diagnostics.snapon.com

TEXA USA
texausa.com

Thinkcar Tech, Inc.
mythinkcar.com

TOPDON USA
topdonusa.com

XToolUSA
xtoolusa.com

Zurich
harborfreight.com



PicoScope®
EV KIT

The world's most complete EV testing solution

Visit www.picoauto.com/A871 to learn **MORE**

pico
Technology

Email: sales@picotech.com. Errors and omissions excepted. Please contact Pico Technology for the latest prices before ordering.

For more information visit VehicleServicePros.com/10094540

ONE TOOL

TO SCAN THEM ALL



TEXA offers its customers the possibility of tailoring each unit to their specific needs and add different software modules, one diagnostic solution can work on commercial vehicles, passenger cars and more. Not enough? You can add excavators, tractors, motorcycles, utility vehicles and boats! With TEXA you get unmatched coverage and the best return on investment in the market.



Contact us for more information
about our diagnostic solutions.

For more information visit VehicleServicePros.com/10094929

TEXA USA Inc.
409 Joyce Kilmer Avenue
New Brunswick, NJ 08901
www.texausa.com
northamerica@texa.com
+1 855.200.8392

TEXA



From scanning your truck,
to taking action.

All in the same screen.

ALL SYSTEMS
SCAN AND
FAULT CODES
IDENTIFICATION

BI-DIRECTIONAL
CONTROLS

TECHNICAL AND
REPAIR INFO



ONECLICKDIAGNOSTICS

Meet the tool that helps you prioritize, and get the **JOB DONE!**



For more information visit VehicleServicePros.com/10942695



cojaliusa.com - 800-975-1865 - info@cojaliusa.com