

# PTEN

IN ASSOCIATION WITH THE FOLLOWING  
PTEN-AFFILIATED PUBLICATIONS:

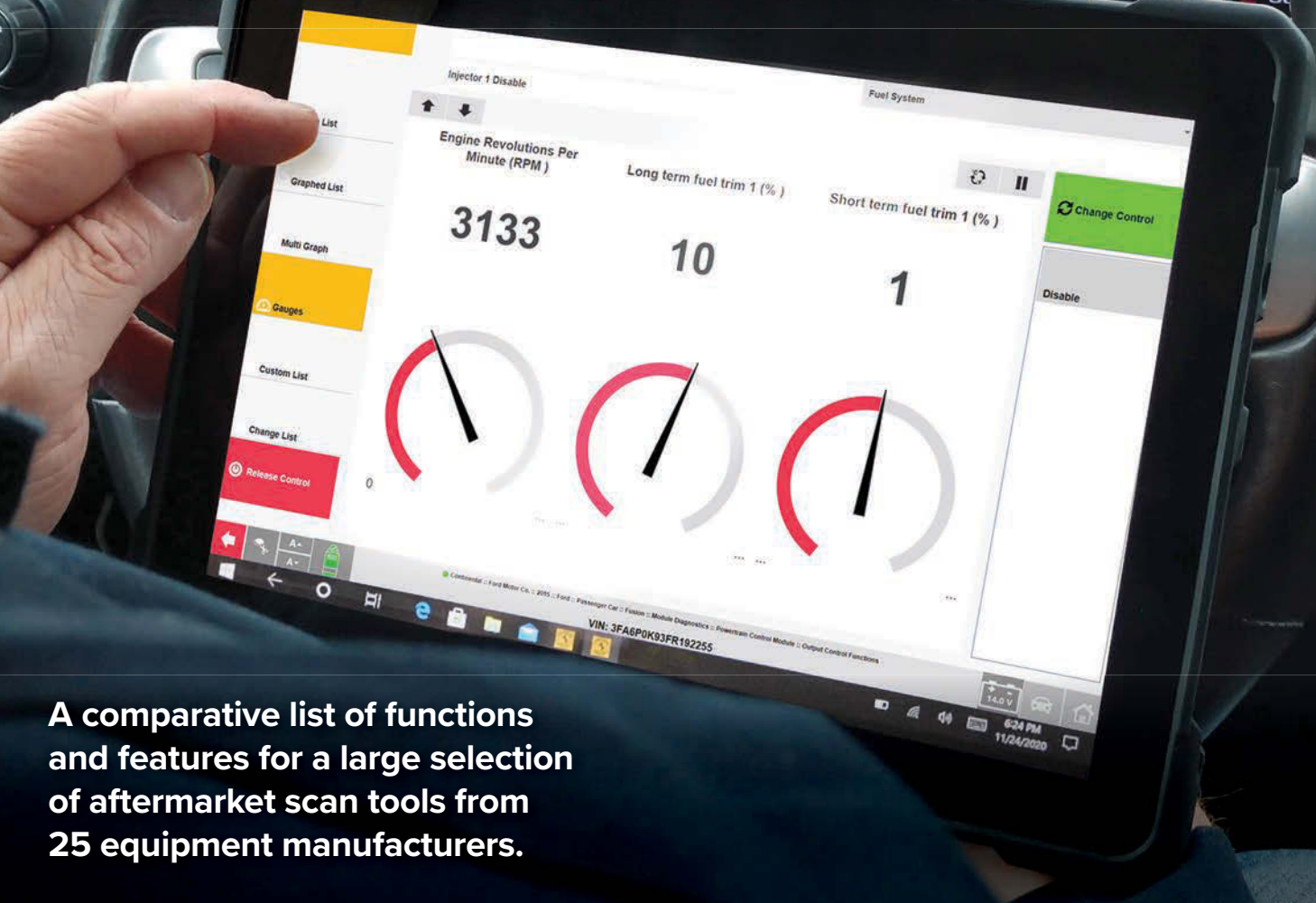
**FleetMaintenance**

**PROFESSIONAL  
DISTRIBUTOR**

PROFESSIONAL **TOOL & EQUIPMENT NEWS**

JUNE 2022

## SCAN TOOL SPEC GUIDE



A comparative list of functions and features for a large selection of aftermarket scan tools from 25 equipment manufacturers.

SPONSORED BY:



# Smarter Diagnostics Extended Capability

## X-431Throttle III

- 13.3" Full Touch Screen
- 8GB+256GB Storage Memory
- Pre/Post Scan & ADAS Calibration
- 8 Expanded Modules Diagnostic
- Passenger Cars & Heavy-Duty Vehicles Repairs

## 4 Channels O2-1 Scopebox

- Up to 100 MHZ BANDWIDTH
- Up to 50MS BUFFER MEMORY
- 1GBPS MAX SAMPLES
- Record & Playback Waveform Data

### IDEAL FOR

Fix Complex Electrical Faults on OE Level Diagnostics



O2-1 Scopebox

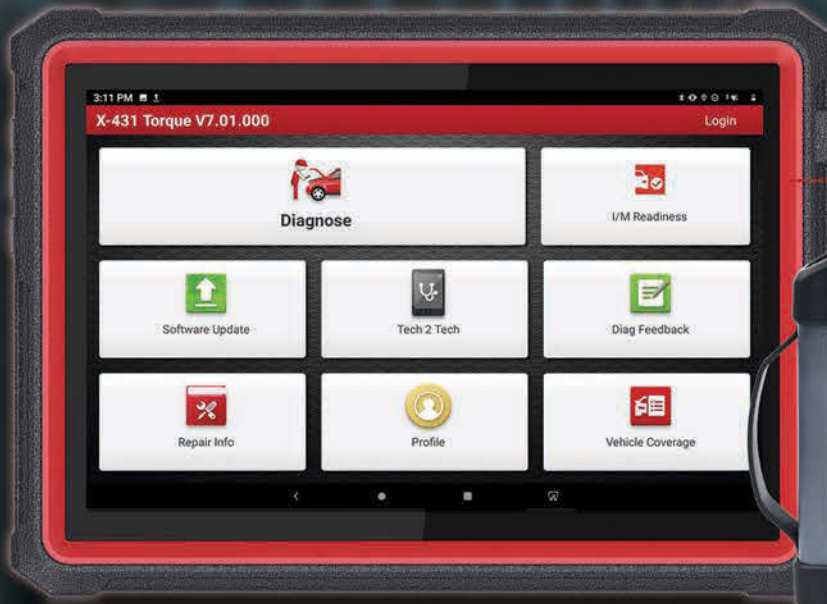
X-431Throttle III

Smartlink

For more information visit [VehicleServicePros.com/10094390](http://VehicleServicePros.com/10094390)

# FROM PASSENGER CARS TO HEAVY DUTY VEHICLES

All Covered



## X-431 Torque AutoHD

### FOR HEAVY DUTY VEHICLES

- Bi-directional Tests
- Component Calibrations
- Special Functions

### FOR PASSENGER CARS

- ✓ Comprehensive vehicle coverage.
- ✓ Compatible with Multiple extra modules.
- ✓ Support X431 Fix repair information, driven by Motor.
- ✓ SGW access approved by FCA.
- ✓ Code Assist database by Identifix.

#### Three Highlights

- ★ Passenger Cars & Heavy Duty Vehicles
- ★ Comprehensive Bi-directional Functions
- ★ FCA Approved SGW Access

#### Specification

- SCREEN**  
10.1-inch Touch Screen
- CPU**  
1.8GHZ Octa-core
- OPERATING SYSTEM**  
Android 9.0
- STORAGE**  
32GB + 32GB (SD Card)
- MEMORY**  
3GB
- DIAGNOSTIC CONNECTION**  
Bluetooth
- CAMERA**  
Rear 8MP + Front 5MP

# 2022 SCAN TOOL SPEC GUIDE



**W**elcome to the 2022 Scan Tool Spec Guide, brought to you by *Professional Tool & Equipment News*, *Professional Distributor*, and *Fleet Maintenance* magazines.

By **Emily Markham**, Associate Editor

Automotive technology continues to advance, and it's not slowing down anytime soon. Technology we once only saw in sci-fi movies is becoming our reality. So, in order to prepare technicians for what they'll find in the bay, we have to equip them with more than just a ratchet or a wrench, they need diagnostic scan tools. And yes, the plural is intentional – no one scan tool can do it all.

The needs of your shop will determine what scan tools should be added to your arsenal. In the battle of OE versus aftermarket, many shops may find that OE scan tools aren't right for them or are only needed on specific occasions and will prefer the diverse abilities offered by aftermarket scan tools, allowing them to service multiple vehicle makes and models. In fact, in the 2022 Aftermarket Profile study — found in the April issues of *PTEN* and *Professional Distributor* — 72 percent of shops stated they own aftermarket scan tools.

And that's just what you'll find in this year's Scan Tool Spec Guide. We provide information from 25 aftermarket scan tool manufacturers all broken down into three categories: Global OBD-II, Professional Diagnostic, and Heavy Duty Diagnostic.

Over these next several pages, you'll find the most up-to-date product information for aftermarket scan tools available on the market from all your favorite manufacturers.

Whether you're a seasoned technician looking to add another scan tool to your ever-growing collection, or a technician fresh out of school purchasing your very first one, the decision should not be taken lightly. Do all the Google searches you feel are necessary, reach out to the manufacturer to get a full list of features, and please, use this guide as a reference along the way to finding exactly what you need.



## CONTENTS

**6** GLOBAL OBD-II SCAN TOOLS

**12** PROFESSIONAL DIAGNOSTIC SCAN TOOLS

**27** PRODUCTS

**30** HEAVY DUTY DIAGNOSTIC SCAN TOOLS

**38** COMPANY DIRECTORY

*All specs have been provided by the manufacturers. Endeavor Business Media is not responsible for the accuracy of the tool specifications provided.*

# WORK LIVE WITH DEALER MASTER TECHS

Use IVS 360™ Support to  
Add Up to 5 Billable  
Hours Per Week

 **IVS 360™**  
Live Expert Support

 **DrivePro™ Remote**  
UNLIMITED

## STOP THE UNCERTAINTY THAT LEADS TO SUBLETTING, DELAYS AND MARGIN LOSS. GET IVS 360™ SUPPORT VIA DRIVEPRO REMOTE™ UNLIMITED

We've found that automotive repair shops who use our remote programming and diagnostic support, **IVS 360™**, add up to 5 billable hours per week by expanding their vehicle brand coverage to repair more vehicles. They also increase margin by not subletting work and by not paying for expensive factory software licenses. **DrivePro Remote Unlimited** featuring **IVS 360™ Support** helps you keep work in-house by giving you unlimited, on-demand access to our remote support platform.

**IVS 360™** brand-specific Dealer Master Techs utilize patented **DrivePro Remote™** technology to connect directly to the vehicle using OE and aftermarket tools. We help you diagnose and complete the toughest jobs for all U.S. domestic, Asian and European brand vehicles. Additionally:


- Call on **IVSRAP™** for hassle-free Remote Assist Programming, including ADAS calibration with guaranteed results
- Count on **IVSRepair™**, which is complete built-in, licensed multi-brand diagnostic software, for scanning, live data, bi-directional controls, self-tests and ADAS functions
- Includes Autologic Legacy European Software

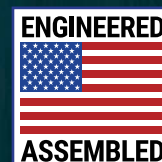
## ELIMINATE GUESSWORK AND GO STRAIGHT TO THE REPAIR WHEN YOU ACCESS IVS 360™ BRAND-SPECIFIC DEALER MASTER TECHS THROUGH DRIVEPRO REMOTE UNLIMITED

For more information visit [VehicleServicePros.com/21086400](http://VehicleServicePros.com/21086400)

# GET \$1,200 CASH BACK\*



 Learn More



844-OPUS IVS  
(844-678-7487)



**OPUS**

**IVS™**

**GET THE POWER TO REPAIR™**

[sales@opusivs.com](mailto:sales@opusivs.com)

[opusivs.com](http://opusivs.com)

\*Scan QR code for details. Terms and conditions apply.

# OBD-II DIAGNOSTIC

COMPANY	Autel	Automotive Test Solutions, Inc.	FCAR Tech USA	Harbor Freight
<b>PRODUCT NAME</b>	MaxiCHECK MX808	eSCAN ELITE	F506 HD code reader	ZR15s OBD2 Code Reader
<b>Price</b>				
Under \$200				
\$201-\$300			●	●
\$301-\$400				
\$401-\$500				
\$501-\$2,000	●	●		
\$2,001 and up				
(OR) Subscription (monthly cost)	\$124.50/yr / first year included			
Additional cost per update or included				Included
<b>Scanning Functions (1996 to Present)</b>				
Reads generic data and monitors (Mode 1)	●	●	●	●
Displays freeze frame data (Mode 2)	●	●	●	●
Reads DTCs (Mode 3)	●	●	●	●
Clears all DTCs for all systems (Mode 4)	●	●	●	●
Reads test results for oxygen sensors (Mode 5)	●	●	●	●
Reads test results for other component/system monitoring (Mode 6)	●	●	●	●
IF YES ABOVE: Provides test result definitions or raw hexadecimal data?	Both	Both	Both	Definition
Reads pending DTCs (Mode 7)	●	●	●	●
Bi-directional control (actuator tests) (Mode 8)			●	●
Vehicle information - VIN # - (Mode 9)	●	●	●	●
Reads permanent DTCs (Mode 0A)	●	●	●	●
<b>Unit Features</b>				
Unit type (PC-based, separate tablet/smartphone, standalone tablet)	Standalone tablet	PC-based	Handheld	Handheld
Requires separate laptop or PC (Y or N)	N	Y	N	N
Operating system (Windows, Android, iOS)	Android	Windows	Android	Windows / IOS / Android
Multilingual - on screen definitions in English/Spanish/French	●		●	●
Internal battery included	●			●
Length of time to fully charge unit	120 minutes			
Length of time unit runs on one charge (in hours)	4.5 hours			
Unit boot-up time (from "on" button to useable screen)	30 seconds		10 seconds	8 seconds

	Injectronic	Innova Electronics, Corp.	Launch Tech USA	Matco Tools	Snap-on	THINKCAR Tech, Inc.	TOPDON USA
	CJ250	5610 CarScan PRO	MILLENNIUM X	MaxLiteA	ZEUS	Platinum S10TVCI	ArtiDiag 800BT
	●						
			●				
		●					
				●			●
					●	●	
			\$0	\$0	\$91.58	Included 2 years, then \$399/year	\$0
	●	●	●	●	●	●	●
	●	●	●	●	●	●	●
	●	●	●	●	●	●	●
	●	●	●	●	●	●	●
	●	●	●	●	●	●	●
	●	●	●	●	●	●	●
	Both	Both	Both	Both	Both	Both	Both
	●	●	●	●	●	●	●
	●	●	●	●	●	●	●
	●	●	●	●	●	●	●
	●	●	●	●	●	●	●
		Handheld	Standalone Tablet	Standalone Tablet	Standalone Tablet	Standalone Tablet	Standalone tablet
	N	Optional	N	N	N	N	N
			Android	Android 10	Windows	Android	Android
	●	●	●	●		●	●
		●		●	●	●	●
				60 minutes	300 minutes	180 minutes	150 minutes
				2 hours, powers from vehicle	5 hours	8 hours	Up to 12 hours
	15 seconds	4 seconds	30 seconds	35 seconds	30 seconds	39 sec	20 seconds

COMPANY	Autel	Automotive Test Solutions, Inc.	FCAR Tech USA	Harbor Freight
<b>PRODUCT NAME</b>	MaxiCHECK MX808	eSCAN ELITE	F506 HD code reader	ZR15s OBD2 Code Reader
High-resolution color screen	●	●	●	
Touchscreen interface	●	User defined	●	
Screen size (in inches)	7"	User defined	5"	3.5"
Print diagnostic report via (cable, Wi-Fi, PC, app)	PC	●		
USB port	●	●	●	●
VGA port				
HDMI port				
VCI - unit-to-car capabilities (wired or wireless)	Wired	Both	Wired	Wired
Internet (Wi-Fi, ethernet, both)	Wi-Fi	Both		
<b>Software, Website, Support &amp; Service Features</b>				
Manufacturer's warranty (length of time, in years)	1 year	1 year	2 years	1 year
Date range of vehicles covered (Pre-OBD-II, OBD-II, or Both)	OBD-II	OBD-II	Both	OBD-II
Call-in support (provide U.S. phone number)	855-288-3587	505-265-5077	844-322-7872	888-866-5797
Remote support for device	●	●		
Remote diagnostics & repair support	●	●		
In-person field/rep support			●	
Expert technician support	●	●	●	
Support cost (Included, per use, subscription-based)	Included	Included	Included	Included
Updatable via the Internet	●	●	●	●
Updates subscription based (Y or N)	Y	Y	N	N
Updates: Optional or mandatory	Optional	Optional	Optional	Optional
File saving ability? Y/N	Y	Y	Y	Y
File exporting ability? Y/N	N	Y	Y	
Optional repair solution database (list all that apply)	N			
Supplemental repair instructions/videos	●			
Includes the following repair information services - e.g. Identifix, Mitchell 1, etc. (list all that apply)				RepairSolutions2
Interfaces with the following shop management systems (list all that apply)				
<b>Most Important Feature</b>	All system scan tool	Drivability tool that makes you money	Reads codes for most OEMs	All module scan, bi-directional test, repair info, DPF regen



	Injectronic	Innova Electronics, Corp.	Launch Tech USA	Matco Tools	Snap-on	THINKCAR Tech, Inc.	TOPDON USA
	CJ250	5610 CarScan PRO	MILLENNIUM X	MaxLiteA	ZEUS	Platinum S10TVCI	ArtiDiag 800BT
	●	●	●	●	●	●	●
			●	●	●	●	●
	3"	3.5"	4"	5"	10"	10"	6"
	●	●	●	Wi-Fi	●	●	●
	●	●	●		●	●	●
					●		
					●		
		Wired	Wired	Wired	●	●	Wireless
			Wi-Fi	Wi-Fi	Both	Wi-Fi	Wi-Fi
	1 year	1 year	1 year	2 years	2 years	1 year	1 year
	OBD-II	Both	OBD-II	OBD-II	Both	Both	OBD-II
	915-208-5451	800-544-4124	877-528-6249	877-853-3738	800-424-7226	833-692-2766	833-629-4832
		●	●	●	●	●	●
		●		With subscription	●	●	
		●	●	●	●		●
		●		●	●		
		Included	Included	●	Included	Included	Included
	●	●	●	●	●	●	●
	N		Y	Y	Y	Y	N
	Optional	Optional / Free	Optional	Optional	Optional	Optional	Included
		Y	Y	Y	Y	Y	Y
	Y	Y	Y	Y	Y	Y	Y
				Code Assist	Mitchell 1		
		●	●	Optional w/ Rap Assist	●		●
		ALLDATA		MaxFix	Mitchell 1		
	Extensive coverage, quick scan and diagnostics	All systems scan + active test/special functions	Optional service functions subscription	Included most popular service resets	Fast-track intelligent diagnostics for faster repairs	Unbeatable coverage & coding plus bi-directional communication	Reads all modules on most supported vehicles



# MAINTENANCE SIMPLIFIED.

Fill up your virtual toolbox with Noregon's suite of diagnostic and repair solutions.

Whether you're looking to simplify diagnostics, add interactive maintenance guides, or get remote assistance from top technicians in the industry, ***we have you covered from intake to completed repair.***



VIEW COVERAGE



LEARN MORE



Learn more: [www.noregon.com](http://www.noregon.com)

For available discounts call: (855) 889-5776

For more information visit [VehicleServicePros.com/10122188](http://VehicleServicePros.com/10122188)

©2022 Noregon Systems, LLC. JPRO and NextStep are registered trademarks of Noregon Systems, LLC. All Rights Reserved.

# A SCAN TOOL FOR EVERY TECH!

## MAXIMUS 4.0

THE MOST POWERFUL MEMBER OF THE MATCO TOOLS DIAGNOSTICS FAMILY.

- The only all-in-one scan tool that scans both carline and heavy duty.
- Includes 4-Channel Oscilloscope, battery analyzer and access to the MaxFix repair database.



## MAXFLEXA

1 TOOL. 3 WAYS TO FLEX.

1. Full Coverage with Annual Updates.
2. Customized Monthly Subscription.
3. Enhanced Code Reader/Tablet.



## MAXLITEA

MINI AND MIGHTY DIAGNOSTICS.

- New and improved Maximus diagnostics on a small scale.
- Includes Dual Band WiFi, CAN FD, Transport Model, access to the SGW module and DoIP.



For more information visit [VehicleServicePros.com/10095267](http://VehicleServicePros.com/10095267)

Have a Matco Scan Tool but your subscription is out of date?  
**YOU'RE MISSING OVER 700 UPDATES!**  
 New! Add a subscription,  
 stay in warranty on your scan tool.

Talk to your Matco Tools Distributor or visit [www.matcotools.com](http://www.matcotools.com) for more information.

# PROFESSIONAL DIAGNOSTIC

COMPANY	ALLDATA	Autel	Autoland Scientech	Bosch	CanDo Diagnostics, Inc.	Continental	FCAR Tech USA	Harbor Freight	
<b>PRODUCT NAME</b>	ALLDATA Diagnostics	MaxiSYS MS909	iSCAN SF	ADS 625X	C Pro	Autodiagnos Pro	F7SG Master TabPro	ZRPRO ZR-PRO	
<b>Price</b>									
Under \$500									
\$501-\$1,000					●			●	
\$1,001-\$3,000						●			
\$3,001-\$5,000		●	●	●					
\$5,001-\$7,000									
\$7,001-\$9,000							●		
\$9,001 to \$10,000									
More than \$10,000									
(OR) Subscription (monthly cost)	\$239/month	\$1,295/yr / first year included							
Additional cost per update or included	Included		\$899	\$785	1 year free, \$450 thereafter	2 years free / \$699/yr after		\$499.99/yr	
<b>Scanning Functions (1996 to Present)</b>									
Fully supports all 10 modes of OBD-II scan tool operation (Mode 1 through Mode OA)	●	●	●	●	●	●	●	●	
<b>Other Functions</b>									
Supports service functions and relearns needed for factory service	●	●	●	●	●	Partial	●	●	
Inspection/reset light function	●	●	●	●	●	●	●	●	
Record and play back data	●	●	●	●	●	●	●	●	
Graphs live data on screen	●	●	●	●	●	●	●	●	
Graphs multiple PIDs on screen simultaneously (#)	25	3	14 +	8	4	8	8	4	
Has ability to graph-merge PIDS		●		●	●	●	●	●	
User-selectable units (SAE, metric)	●	●	●	●	●	●	●	●	
Pre- and Post-scan reports	●	●	●	●	●	●	●	●	
Security-based module programming support? Y/N	N	Y	Y	N	N	N	N	Y	
Step-by-step ADAS guided diagnostic capability? Y/N	Y	Y	Y	Y	N	N	Y	Y	
Heavy duty capabilities? Y/N	N	N	N	N	N	N	N	N	
<b>J2534</b>									
J2534 reflash and pass-thru diagnostic capability	●	●	●	●		●	Optional		
Is an OEM subscription required to access J2534 reflash and pass-thru diagnostic capabilities? Y/N	N	Y	Y	Y	N	Y	Optional		
Does the tool come with its own J2534 interface? Y/N	N	Y	Y	Y	N	Y	Optional	N	
J2534 reflash completed by technician? Y/N	N	Y	Integrated	Y	N	Y	Optional	N	
J2534 reflash completed as a remote service? Y/N	N	N	Integrated	N	N	N	Optional	N	
<b>Specific System Coverage Data and Bi-Directional Controls</b>									
<b>ADAS Service</b>									
<b>ADAS System Diagnostics</b>									
4 - >90% coverage   3 - 80-90% coverage   2 - 50-79% coverage   1 - <50% coverage									
Chrysler (FCA)	Y   Y	4   4	4   1	4   4	2   2	3   3	1   2	4   4	
Ford	Y   Y	4   4	4   4	4   4	2   2	3   3	2   3	4   4	
GM	Y   Y	4   4	4   4	4   4	2   2	3   3	3   4	4   4	
Honda	Y   Y	4   4	4   4	4   4	2   2	1   1	4   1	4   4	
Hyundai/Kia	Y   Y	4   4	4   4	3   3	2   2	1   1	2   1	4   4	
Jaguar/Land Rover	Y   Y	4   4	4   4	4   4	2   2	1   1	2   3	4   3	
Mazda	Y   Y	4   4	4   4	4   4	2   2	2   2	2   4	4   4	
Nissan	Y   Y	4   4	4   4	4   4	2   2	3   3	3   3	4   4	
Subaru	Y   Y	4   4	4   4	4   4	2   2	1   1	2   2	4   4	



# PROFESSIONAL DIAGNOSTIC

COMPANY	ALLDATA	Autel	Autoland Scientech	Bosch	CanDo Diagnostics, Inc.	Continental	FCAR Tech USA	Harbor Freight
PRODUCT NAME	ALLDATA Diagnostics	MaxiSYS MS909	iSCAN SF	ADS 625X	C Pro	Autodiagnos Pro	F7SG Master TabPro	ZRPRO ZR-PRO
4 - >90% coverage   3 - 80-90% coverage   2 - 50-79% coverage   1 - <50% coverage								
Toyota	Y   Y	4   4	4   4	4   4	2   2	3   3	3   4	4   4
BMW/Mini Cooper	Y   Y	4   4	4   4	4   4	2   2	1   1	3   2	4   4
Mercedes Benz	Y   Y	4   4	4   4	4   4	2   2	1   1	3   1	4   4
Volkswagen/Audi	Y   Y	4   4	4   4	4   4	2   2	1   1	4   4	4   4
Volvo	Y   Y	4   4	4   4	4   4	2   2	1   1	4   3	3   3
<b>ADAS System Dynamic Calibration Services</b>								
Chrysler (FCA)	Y   Y	4   4	4   1	4   4	2   2	1   1	1   2	4   4
Ford	Y   Y	4   4	4   4	4   4	2   2	1   1	2   3	4   4
GM	Y   Y	4   4	4   4	4   4	2   2	1   1	3   4	4   4
Honda	Y   Y	4   4	4   4	4   4	2   2	1   1	4   1	4   4
Hyundai/Kia	Y   Y	4   4	4   4	3   3	2   2	1   1	2   1	4   4
Jaguar/Land Rover	Y   Y	4   4	4   4	4   4	2   2	1   1	2   3	4   4
Mazda	Y   Y	4   4	4   4	4   4	2   2	1   1	2   4	4   4
Nissan	Y   Y	4   4	4   4	4   4	2   2	1   1	3   3	4   4
Subaru	Y   Y	4   4	4   4	4   4	2   2	1   1	2   2	4   4
Toyota	Y   Y	4   4	4   4	4   4	2   2	1   1	3   4	4   4
BMW/Mini Cooper	Y   Y	4   4	4   4	4   4	2   2	1   1	3   2	4   4
Mercedes Benz	Y   Y	4   4	4   4	4   4	2   2	1   1	3   1	4   4
Volkswagen/Audi	Y   Y	4   4	4   4	4   4	2   2	1   1	4   4	4   4
Volvo	Y   Y	4   4	4   4	4   4	2   2	1   1	4   3	3   3
<b>ADAS System Static Calibration Services</b>								
Chrysler (FCA)	Y   Y	4   4	4   1	4   4	1   1	1   1	1   2	4   4
Ford	Y   Y	4   4	4   4	4   4	1   1	1   1	2   3	4   4
GM	Y   Y	4   4	4   4	4   4	1   1	1   1	3   4	4   4
Honda	Y   Y	4   4	4   4	4   4	1   1	1   1	4   1	4   4
Hyundai/Kia	Y   Y	4   4	4   4	3   3	1   1	1   1	2   1	4   4
Jaguar/Land Rover	Y   Y	4   4	4   4	4   4	1   1	1   1	2   3	4   4
Mazda	Y   Y	4   4	4   4	4   4	1   1	1   1	2   4	4   4
Nissan	Y   Y	4   4	4   4	4   4	1   1	1   1	3   3	4   4
Subaru	Y   Y	4   4	4   4	4   4	1   1	1   1	2   2	4   4
Toyota	Y   Y	4   4	4   4	4   4	1   1	1   1	3   4	4   4
BMW/Mini Cooper	Y   Y	4   4	4   4	4   4	1   1	1   1	3   2	4   4
Mercedes Benz	Y   Y	4   4	4   4	4   4	1   1	1   1	3   1	4   4
Volkswagen/Audi	Y   Y	4   4	4   4	4   4	1   1	1   1	4   4	4   4
Volvo	Y   Y	4   4	4   4	4   4	1   1	1   1	4   3	3   3
<b>Body control module</b>								
Chrysler (FCA)	Y   Y	4   4	4   1	4   4	3   3	4   4	1   2	4   4
Ford	Y   Y	4   4	4   4	4   4	4   4	4   4	2   3	4   4
GM	Y   Y	4   4	4   4	4   4	4   4	4   4	3   4	4   4
Honda	Y   Y	4   4	4   4	4   4	4   4	2   2	4   1	4   4
Hyundai/Kia	Y   Y	4   4	4   4	4   4	4   4	2   2	2   1	4   4
Jaguar/Land Rover	Y   Y	4   4	4   4	4   4	4   4	1   1	2   3	4   3
Mazda	Y   Y	4   4	4   4	4   4	4   4	3   3	2   4	4   4
Nissan	Y   Y	4   4	4   4	4   4	4   4	4   4	3   3	4   4
Subaru	Y   Y	4   4	4   4	4   4	4   4	1   1	2   2	4   4
Toyota	Y   Y	4   4	4   4	4   4	4   4	4   4	3   4	4   4
BMW/Mini Cooper	Y   Y	4   4	4   4	4   4	4   4	1   1	3   2	4   4



# Calibrations, simplified



ADASLink® full-diagnostic scan tool  
guides techs every step of the way.

- 📄 On-screen direction walks techs through calibrations for millions of vehicles
- 📄 Comprehensive pre- and post-scans of installed systems and codes
- 📶 Full diagnostic capabilities reveal trouble codes and other vehicle information
- 🔒 Secure gateway and gap coverage
- 🔧 Code/pair new parts to the vehicle after installation
- 📱! Follow guided processes to calibrate required systems after a collision



Scan or visit

[hunter.com/adas](http://hunter.com/adas)



**HUNTER**  
Engineering Company

For more information visit [VehicleServicePros.com/10095198](http://VehicleServicePros.com/10095198)

**MADE IN USA**  
USING THE FINEST US & GLOBAL MATERIALS



THE FUTURE OF DIAGNOSTICS IS HERE

# MS909



9.7" SCREEN / ANDROID 7

### INTELLIGENT DIAGNOSTICS

- REPAIR ASSIST
- GUIDED DIAGNOSTICS

### TOPOLOGY MODULE MAP

- ALL SYSTEM STATUS SCREEN
- COLOR CODED FAULTS

### MAXIFLASH VCI

- WIFI / BLUETOOTH ENABLED
- NEW PROTOCOLS



### MAXISYS MS919

- 9.7" SCREEN / ANDROID 7
- INTELLIGENT DIAGNOSTICS
- FIVE-IN-ONE VCI



### MAXISYS MSULTRA

- 12.9" SCREEN / ANDROID 7
- INTELLIGENT DIAGNOSTICS
- FIVE-IN-ONE VCI

For more information visit [VehicleServicePros.com/10095724](http://VehicleServicePros.com/10095724)

SUPPORT: 1.855.288.3587

EMAIL: [USSUPPORT@AUTEL.COM](mailto:USSUPPORT@AUTEL.COM) | WEB: [AUTEL.COM](http://AUTEL.COM)

VIEW MARKETING MATERIAL: [ISSUU.COM/AUTEL2](http://ISSUU.COM/AUTEL2)

FOLLOW US @AUTELTOOLS    



# PROFESSIONAL DIAGNOSTIC

COMPANY	ALLDATA	Autel	Autoland Scientech	Bosch	CanDo Diagnostics, Inc.	Continental	FCAR Tech USA	Harbor Freight
PRODUCT NAME	ALLDATA Diagnostics	MaxiSYS MS909	iSCAN SF	ADS 625X	C Pro	Autodiagnos Pro	F7SG Master TabPro	ZRPRO ZR-PRO
4 - >90% coverage   3 - 80-90% coverage   2 - 50-79% coverage   1 - <50% coverage								
Mercedes Benz	Y   Y	4   4	4   4	4   4	4   4	1   1	3   1	4   4
Volkswagen/Audi	Y   Y	4   4	4   4	4   4	4   4	1   1	4   4	4   4
Volvo	Y   Y	4   4	4   4	4   4	4   4	1   1	4   3	3   3
<b>Chassis/braking system control</b>								
Chrysler (FCA)	Y   Y	4   4	4   1	4   4	3   3	4   4	1   2	4   4
Ford	Y   Y	4   4	4   4	4   4	4   4	4   4	2   3	4   4
GM	Y   Y	4   4	4   4	4   4	4   4	4   4	3   4	4   4
Honda	Y   Y	4   4	4   4	4   4	4   4	2   2	4   1	4   4
Hyundai/Kia	Y   Y	4   4	4   4	4   4	4   4	2   2	2   1	4   4
Jaguar/Land Rover	Y   Y	4   4	4   4	4   4	4   4	1   1	2   3	4   3
Mazda	Y   Y	4   4	4   4	4   4	4   4	3   3	2   4	4   4
Nissan	Y   Y	4   4	4   4	4   4	4   4	4   4	3   3	4   4
Subaru	Y   Y	4   4	4   4	4   4	4   4	1   1	2   2	4   4
Toyota	Y   Y	4   4	4   4	4   4	4   4	4   4	3   4	4   4
BMW/Mini Cooper	Y   Y	4   4	4   4	4   4	4   4	1   1	3   2	4   4
Mercedes Benz	Y   Y	4   4	4   4	4   4	4   4	1   1	3   1	4   4
Volkswagen/Audi	Y   Y	4   4	4   4	4   4	4   4	1   1	4   4	4   4
Volvo	Y   Y	4   4	4   4	4   4	4   4	1   1	4   3	3   3
<b>Powertrain control module</b>								
Chrysler (FCA)	Y   Y	4   4	4   1	4   4	3   3	4   4	1   2	4   4
Ford	Y   Y	4   4	4   4	4   4	4   4	4   4	2   3	4   4
GM	Y   Y	4   4	4   4	4   4	4   4	4   4	3   4	4   4
Honda	Y   Y	4   4	4   4	4   4	4   4	2   2	4   1	4   4
Hyundai/Kia	Y   Y	4   4	4   4	4   4	4   4	2   2	2   1	4   4
Jaguar/Land Rover	Y   Y	4   4	4   4	4   4	4   4	1   1	2   3	4   3
Mazda	Y   Y	4   4	4   4	4   4	4   4	3   3	2   4	4   4
Nissan	Y   Y	4   4	4   4	4   4	4   4	4   4	3   3	4   4
Subaru	Y   Y	4   4	4   4	4   4	4   4	1   1	2   2	4   4
Toyota	Y   Y	4   4	4   4	4   4	4   4	4   4	3   4	4   4
BMW/Mini Cooper	Y   Y	4   4	4   4	4   4	4   4	1   1	3   2	4   4
Mercedes Benz	Y   Y	4   4	4   4	4   4	4   4	1   1	3   1	4   4
Volkswagen/Audi	Y   Y	4   4	4   4	4   4	4   4	1   1	4   4	4   4
Volvo	Y   Y	4   4	4   4	4   4	4   4	1   1	4   3	3   3
<b>SRS coverage</b>								
Chrysler (FCA)	Y   Y	4   4	4   1	4   4	3   3	4   4	1   2	4   4
Ford	Y   Y	4   4	4   4	4   4	4   4	4   4	2   3	4   4
GM	Y   Y	4   4	4   4	4   4	4   4	4   4	3   4	4   4
Honda	Y   Y	4   4	4   4	4   4	4   4	2   2	4   1	4   4
Hyundai/Kia	Y   Y	4   4	4   4	4   4	4   4	2   2	2   1	4   4
Jaguar/Land Rover	Y   Y	4   4	4   4	4   4	4   4	1   1	2   3	4   3
Mazda	Y   Y	4   4	4   4	4   4	4   4	3   3	2   4	4   4
Nissan	Y   Y	4   4	4   4	4   4	4   4	4   4	3   3	4   4
Subaru	Y   Y	4   4	4   4	4   4	4   4	1   1	2   2	4   4
Toyota	Y   Y	4   4	4   4	4   4	4   4	4   4	3   4	4   4
BMW/Mini Cooper	Y   Y	4   4	4   4	4   4	4   4	1   1	3   2	4   4
Mercedes Benz	Y   Y	4   4	4   4	4   4	4   4	1   1	3   1	4   4
Volkswagen/Audi	Y   Y	4   4	4   4	4   4	4   4	1   1	4   4	4   4
Volvo	Y   Y	4   4	4   4	4   4	4   4	1   1	4   3	3   3



# Hello, NITRO. Goodbye, Yearly Fees!

# FREE UPDATES FOR LIFE!

## The Ultimate 2-in-1 Scan Tool and Key Programmer

# NITRO

## DIAGNOSTIC SYSTEM



## NITRO-LT

Part # NITRO-LT

**Best for Mobile Mechanics or Light Use**

- HD 8-Inch Touch Screen Display/Android OS
- 1.8 GHz Quad-Core Processor with 2GB RAM/32GB Hard Drive
- Rugged Shockproof Aluminum Case
- Wired Connection to OBDII
- Auto Focus, 8MP Camera
- 10000 mAh Battery Allows for an 8-hour Operation Period
- Full System Car Diagnostics
- Smart Key, Prox and Transponder Key Programming
- Automatic and Manual Service Light Reset Functionality
- Capable of Throttle Relearn, BMS Reset, EPB, TPMS and more!

## NITRO-GT

Part # NITRO-GT

**For the Advanced User, High Level Diagnostic Work**

- HD 10-Inch Touch Screen Display/Android OS
- 1.8 GHz Quad-Core Processor with 4GB RAM/64GB Hard Drive
- SAE J2534-1 & J2534-2 Pass-Thru Programming
- Rugged Shockproof Aluminum Case
- Connect to OBDII thru Bluetooth Interface
- Wi-Fi Compatible
- Auto Focus, 8MP Camera
- 10000 mAh Battery Allows for an 8-hour Operation Period
- Full System Car Diagnostics
- Smart Key, Prox and Transponder Key Programming
- Automatic and Manual Service Light Reset Functionality
- Capable of Throttle Relearn, BMS Reset, EPB, TPMS and more!

## NITRO-XT

Part # NITRO-XT

**Best Choice for Busy Shops with Multiple Bays**

- HD 10-Inch Touch Screen Display/Android OS
- 1.8 GHz Quad-Core Processor with 4GB RAM/64GB Hard Drive
- Rugged Shockproof Aluminum Case
- Connect to OBDII thru Bluetooth Interface
- Wi-Fi Compatible
- Auto Focus, 8MP Camera
- 10000 mAh Battery Allows for an 8-hour Operation Period
- Full System Car Diagnostics
- Smart Key, Prox and Transponder Key Programming
- Automatic and Manual Service Light Reset Functionality
- Capable of Throttle Relearn, BMS Reset, EPB, TPMS and more!



**NITROSCANTOOL.COM**  
888-988-6865 | USA TECHNICAL SUPPORT



NITRO SCAN TOOL



NITRO SCAN TOOL

For more information visit [VehicleServicePros.com/21114208](http://VehicleServicePros.com/21114208)

# THE PERFECT COMPLIMENT TO YOUR NITRO



## PROGRAMMING & KEY MAKING SIMPLIFIED

XToolUSA has created a simple, yet revolutionary Key Making System that will introduce a brand new and highly profitable revenue stream to your bottom line.

Part #  
NITRO-XT-SYS



Part #  
20201000



"Automated, easy, fast!"  
- ASE Master Technician



Part #  
27301238



Part #  
27801294



Find out more at  
**KeyMakingSystem.com**

ENTER FOR YOUR CHANCE TO  
**WIN A FREE NITRO XT!**  
NITROSCANTOOL.COM/CONTEST



# PROFESSIONAL DIAGNOSTIC

COMPANY	ALLDATA	Autel	Autoland Scientech	Bosch	CanDo Diagnostics, Inc.	Continental	FCAR Tech USA	Harbor Freight
<b>PRODUCT NAME</b>	ALLDATA Diagnostics	MaxiSYS MS909	iSCAN SF	ADS 625X	C Pro	Autodiagnos Pro	F7SG Master TabPro	ZRPRO ZR-PRO
4 - >90% coverage   3 - 80-90% coverage   2 - 50-79% coverage   1 - <50% coverage								
<b>HVAC/climate control</b>								
Chrysler (FCA)	Y   Y	4   4	4   1	4   4	3   3	4   4	1   2	4   4
Ford	Y   Y	4   4	4   4	4   4	4   4	4   4	2   3	4   4
GM	Y   Y	4   4	4   4	4   4	4   4	4   4	3   4	4   4
Honda	Y   Y	4   4	4   4	4   4	4   4	2   2	4   1	4   4
Hyundai/Kia	Y   Y	4   4	4   4	4   4	4   4	2   2	2   1	4   4
Jaguar/Land Rover	Y   Y	4   4	4   4	4   4	4   4	1   1	2   3	4   3
Mazda	Y   Y	4   4	4   4	4   4	4   4	3   3	2   4	4   4
Nissan	Y   Y	4   4	4   4	4   4	4   4	4   4	3   3	4   4
Subaru	Y   Y	4   4	4   4	4   4	4   4	1   1	2   2	4   4
Toyota	Y   Y	4   4	4   4	4   4	4   4	4   4	3   4	4   4
BMW/Mini Cooper	Y   Y	4   4	4   4	4   4	4   4	1   1	3   2	4   4
Mercedes Benz	Y   Y	4   4	4   4	4   4	4   4	1   1	3   1	4   4
Volkswagen/Audi	Y   Y	4   4	4   4	4   4	4   4	1   1	4   4	4   4
Volvo	Y   Y	4   4	4   4	4   4	4   4	1   1	4   3	3   3
<b>Exotic European Coverage</b>								
Alfa Romeo	Y   Y	4   4	1   1	4   4	4   4	1   1	1   2	3   4
Bentley	Y   Y	4   4	4   4	1   1	3   3	1   1	2   3	3   3
Bugatti	N   N	4   4	1   1	1   1		1   1	3   4	3   3
Ferrari	Y   Y	4   4	3   2	1   1		1   1	4   1	3   3
Lotus	N   N		1   1	1   1		1   1	2   1	
Maserati	Y   Y	4   4	3   2	1   1	3   3	1   1	2   3	3   3
Maybach	N   N	4   4	4   4	1   1	3   3	1   1	2   4	4   4
Opel	Y   Y	4   4	1   1	1   1	3   3	1   1	3   3	4   4
Peugeot	Y   Y	4   4	1   1	1   1	3   3	1   1	2   2	4   3
Porsche	Y   Y	4   4	4   4	3   1	3   3	1   1	3   4	4   3
Renault	Y   Y	4   4	2   2	1   1	3   3	1   1	3   2	4   3
Rolls-Royce	N   N	4   4	4   4	1   1		1   1	3   1	4   4
Saab	Y   Y	4   4		2   2	3   3	1   1	4   4	4   4
<b>Security Functions</b>								
Ability to bypass or access the secured gateway?	Access	Access		Access	Bypass	FCA and Ford coming in 2022	Bypass	Access
<b>Unit Features</b>								
Unit type (PC-based, separate tablet/smartphone, standalone tablet)	User Defined (PC/Tablet/Phone)	Standalone Tablet	Standalone Tablet	Standalone Tablet	Standalone Tablet	Standalone Tablet	Standalone Tablet	Standalone Tablet
Requires separate laptop or PC (Y or N)	Y	N	Y	N	N	N	N	N
Operating system (Windows, Android, iOS)	Windows 10, Android 6 & above, iOS 13 & above	Android	Android	Android	Android	Windows	Android	Android
Storage (in GB)		128G	8GB	32GB	32GB	8GB	30GB	16GB
Expandable storage		32G	Unlimited	1TB	128GB	32GB	32GB	
Multilingual - on screen definitions in English/Spanish/French		●	●	●	●		●	●
Internal battery included		●		●	●	●	●	●
Length of time to fully charge unit		180 minutes		180 minutes	60 minutes	180 minutes	90 minutes	180 minutes
Length of time unit runs on one charge		8 hours		12 hours	8 hours	8 hours	7 hours	4 hours
Unit boot-up time (from "on" button to usable screen)	15 seconds	20 seconds	35 Seconds	45 seconds	30 seconds	15 seconds	20 seconds	45 seconds
High-resolution color screen		●	●	●		●	●	●
Touchscreen interface	●	●	●	●	●	●	●	●

Hunter Engineering Co.	Injectronic	Innova Electronics, Corp.	Launch Tech USA	Mac Tools	Matco Tools	Opus IVS	TEXA USA	THINKCAR Tech, Inc.	TOPDON USA	XToolUSA
ADASLink	CJ8K	7111 Smart Diagnostic System	X431 THROTTLE III	ET9200ELITE	MDMAX4CL	DrivePro Remote Unlimited	IDC5 CAR	Platinum S20	Phoenix Smart	Nitro GT
4   4	4   4	1   1	4   4	4   4	4   4	4   4	4   4	4   4	4   4	4   4
4   4	4   4	1   1	4   4	4   4	4   4	4   4	3   3	4   4	4   4	4   4
4   4	4   4	1   1	4   4	4   4	4   4	4   4	3   3	4   4	4   4	4   4
4   4	4   4	1   1	4   4	4   4	4   4	4   4	4   4	4   4	4   4	4   4
4   4	4   4	1   1	4   4	4   4	4   4	4   4	4   4	4   4	4   4	4   4
4   4	4   3	1   1	4   3	4   4	4   3	4   4	4   4	4   4	4   4	4   4
4   4	4   4	1   1	4   4	4   4	4   4	4   4	4   4	4   4	4   4	4   4
4   4	4   4	1   1	4   4	4   4	4   4	4   4	4   4	4   4	4   4	4   4
4   4	4   3	1   1	4   4	4   4	4   4	4   4	4   4	4   4	4   4	4   4
4   4	4   4	1   1	4   4	4   4	4   4	4   4	4   4	4   4	4   4	4   4
4   4	4   4	1   1	4   4	4   4	4   4	4   4	4   4	4   4	4   4	4   4
4   4	4   3	1   1	4   4	4   4	4   4	4   4	4   4	4   4	4   4	4   4
4   4	4   4	1   1	4   4	4   4	4   4	4   4	4   4	4   4	4   4	4   4
4   4	4   4	1   1	3   3	4   4	3   3	4   4	4   4	4   4	4   4	4   4
4   4	3   3		3   4	4   4	3   4	3   3	4   4	4   3	4   4	4   4
1   1	4   4		3   3	1   1	3   3	3   3	4   4	4   3	3   3	4   4
1   1	4   4		3   3	1   1	3   3		4   4	3   2	3   3	4   3
1   1	3   3		3   3	1   1	3   3		4   4	3   2	3   2	4   3
1   1	0   0		1   1	1   1	1   1		4   4	3   2		2   2
1   1	3   3		3   3	1   1	3   3		4   4	3   2	3   2	4   3
1   1	4   3		4   4	1   1	4   4	4   4	4   4	4   3	4   4	4   4
1   1	4   4		4   4	1   1	4   4			3   2	2   2	4   4
1   1	4   4		4   3	1   1	4   3			3   2	2   2	4   4
3   1	4   4		4   3	3   1	4   3	4   4	4   4	3   4	3   3	4   3
1   1	4   4		4   3	1   1	4   3			3   2	2   2	4   4
1   1	4   4		4   4	1   1	4   4	3   3	4   4	3   2	2   2	4   3
2   2	4   4		4   4	2   2	4   4	2   2	4   4	4   4	2   2	4   4
Access	Bypass	Bypass	Access	Access	Access	Access	Access	Access	Bypass and access	Bypass
Standalone Tablet	Standalone Tablet	Standalone Tablet	Standalone Tablet	Standalone Tablet	Standalone Tablet	Standalone Tablet	Standalone Tablet	Standalone Tablet	Standalone Tablet	Standalone Tablet
N	N	N	N	N	N	N	N	N	N	N
Android	Android	Android	Android	Android	Android 9.0	Windows	Windows 10	Android	Android	Android
32GB	32GB	16GB	256GB	32GB	8GB	256G	256GB	256GB	4GB/128GB	8GB
1TB		32GB	128GB	1TB	256GB		●			64GB
●	●	●	●	●	●	●	●	●	●	●
●	●	●	●	●	●	●	●	●	●	●
180 minutes	3 hours	180 minutes	150 minutes	180 minutes	60 minutes	5 hours	120 minutes	180 minutes	150 minutes	60 minutes
12 hours	6 hours	6 hours	12 hours	12 hours	6-8 hours	5 hours	8 hours	8 hours	Up to 12 hours	8 hours
45 seconds	25 seconds	30 seconds	35 seconds	45 seconds	22 seconds	2 minutes	45 seconds	39 seconds	20 seconds	17 seconds
●	●	●	●	●	●	●	●	●	●	●
●	●	●	●	●	●	●	●	●	●	●

# PROFESSIONAL DIAGNOSTIC

COMPANY	ALLDATA	Autel	Autoland Scientech	Bosch	CanDo Diagnostics, Inc.	Continental	FCAR Tech USA	Harbor Freight
<b>PRODUCT NAME</b>	ALLDATA Diagnostics	MaxiSYS MS909	iSCAN SF	ADS 625X	C Pro	Autodiagnos Pro	F7SG Master TabPro	ZRPRO ZR-PRO
Screen size (in inches)	Tablets 7" and above, Phones 6" and above	9.7"	8"	10.4"	8"	10.1"	11"	8"
Print diagnostic report via (cable, Wi-Fi, PC, app)		PC, APP, Wi-Fi	Wi-Fi, Cable, App	●	Wi-Fi	●	●	Wi-Fi
USB port		●	●	●	●	●	●	●
VGA port								
HDMI port		●			●	●	●	
VCI - unit-to-car capabilities (wired or wireless)	●	Wireless	Wired	Wireless	Wireless	●	●	Wireless
Internet (Wi-Fi, ethernet, both)	Both	Wi-Fi	Both	Wi-Fi	Wi-Fi	Both	●	Wi-Fi
<b>Available Tool Add-Ons</b>								
5-gas analyzer						●		
TPMS resets/relearns	●			●	●	●	Optional	●
TPMS programming				●	●	●	Optional	
Labscope capability						●	Optional	
Multimeter						●	●	
Borescope		●		●		●	Optional	
Camera				●		●	●	●
Complete multimeter functions, including amperage		●				●	●	
ADAS calibration		●		●		●		
<b>Software, Website, Support &amp; Service Features</b>								
Manufacturer's warranty (length of time, in years)	3 years for hardware	1 year	2 years	Lifetime	1 year	2 years	2 years	1 year
Date range of vehicles covered (Pre-OBD-II, OBD-II, or Both)	OBD-II	OBD-II	Both	Both	Both	OBD-II	Both	OBD-II
Call-in support (provide U.S. phone number)	800-859-3282	855-288-3587	888-472-2644	855-267-2483	909. CanDo-11	800-265-1818	844-322-7872	877-987-4248
Remote support for device	●	●	●	●	●	●	●	
Remote diagnostics & repair support	●	●	●		●	●	●	
Create support ticket on device	●	●	●	Coming 2H 2022		●	●	
In-person field/rep support	●		●	●	●	●	●	
Expert technician support	Subscription based	●	●		●	●	●	
Support cost (Included, per use, subscription-based)	Included	Included	Included & Per use	Included	Included	Included	Included	Included
File saving ability? Y/N	Y	Y	Y	Y	Y	Y	Y	Y
File exporting ability? Y/N	Optional	Y	Y	Y	Y	Y	N	Y
Ability to run enhanced software from application? Y/N	Y		Y	Y	N	Y	Y	Y
Updatable via the Internet	●	●	●	●	●	●	●	●
Updates subscription based (Y or N)	Y	Y	Y	Y	Y	Y	Y	Y
Updates: Optional or mandatory	Optional	Optional	Optional	Optional	Optional	Optional	Optional	Optional
Optional repair solution database (list all that apply)	ALLDATA Repair & Collision	MOTOR		Repair-Source				Open Android System
Supplemental repair instructions/videos	●	●		●		●	●	●
Includes the following repair information services - e.g. NextStep, Mitchell 1, Identifix, ALLDATA, etc. (list all that apply)	ALLDATA Repair & Collision			Repair-Source, Identifix			Mitchell 1, Alldata	
Interfaces with the following shop management systems (list all that apply)				Shopware		CCC		
<b>Most Important Feature</b>	Seamless integration with ALLDATA Repair & Collision	Expansive coverage, active tests, coding & adaptations	See the complex turn simple with iSCAN	Complete coverage, repair information, and ADAS ready	Fully loaded bi-directional & wireless scan tool for under \$1000	Bi-directional capabilities for most OEMs	Bi-directional capabilities for most OEMs	Affordable, comprehensive, bi-directional



Hunter Engineering Co.	Injectronic	Innova Electronics, Corp.	Launch Tech USA	Mac Tools	Matco Tools	Opus IVS	TEXA USA	THINKCAR Tech, Inc.	TOPDON USA	XToolUSA
ADASLink	CJ8K	7111 Smart Diagnostic System	X431 THROTTLE III	ET9200ELITE	MDFMAX4CL	DrivePro Remote Unlimited	IDC5 CAR	Platinum S20	Phoenix Smart	Nitro GT
10.4"	8"	7"	13.3"	10.4"	13.3"	10.1"	12"	13.3"	10.1"	10.1"
●	●	●	●	●	Wi-Fi	●	●	●	●	Wi-Fi
●	●	●	●	●	●	●	●	●	●	●
	Mini HDMI	●	●	●	●	●	●	●	●	●
Wireless	●	●	●	Wireless	Wireless	Wired	Both	●	Both	Wireless
Wi-Fi	Both	Both	Both	Wi-Fi	Wi-Fi	Both	Both	Both	Both	Wi-Fi
●							●			
●		●	●	●	●	●	●	●	●	●
●	●	●	●	●	Optional	●	●	●	●	●
	●		●		●	●		●		
			●		Optional					
●	●	●	●	●	Optional			●		●
●	●	●	●	●	●	●	●	●	●	●
			●		Optional	●				
●			●	●	●	●	●	●	●	●
Limited lifetime	1 year	1 year	1 year	2 years	2 years	1 year	1 year	1 year	2 years	1 year
Both	Both	Both	Both	Both	Both	2008 to present	Both	Both	OBD-II	Both
855-267-2483	915-208-5451	800-544-4124	877-528-6249	800-MACTOOLS	877-853-3738	877-945-6442	855-200-8392	833-692-2766	833-629-4832	888-416-6950
●	●	●	●	●	●	●	●	●	●	●
●	●		●		Optional	●	●	●	●	●
Coming 2H 2022		●	●	Coming 2H 2022	●	●	●	●	●	●
●		●	●		●	●	●	●	●	●
●		●			Optional	●	●	●	●	●
Included		Included	Included	Included	Per use	Included	Included	Included	Basic support Incl. Advanced avail. w/ cost	Included
Y	Y	N	Y	Y	Y	Y	Y	Y	Y	Y
Y	Y	N	Y	Y	Y	Y	Y	Y	Y	Y
Y	Y	N	Y	Y	Y	Y	Y	Y	N	Y
●	●	●	●	●	●	●	●	●	●	●
Y	N		Y	Y	Y	Y	Y	Y	Y	Y
Optional	Optional	Optional	Optional	Optional	Optional	Mandatory	Optional	Optional	Optional	Optional
Repair-Source, Identifix			Motor	Identifix	Coad Assist	●	TEX@info			
●		●	●	●	●	●	●		●	●
Identifix			Identifix	Repair-Source, Identifix	MaxFix		TEX@info			
HunterNet										
Integrates with Hunter HawkEye Elite(R) Aligner	Dual interface scan tool extensive coverage and services	OEM level diagnostics	OE level software data and control	Built-in repair tools and wiring diagrams	Carlins, Maxfix, and motorcycle all in one	Factory trained tech's use factory software	Quality solution for diagnostics and ADAS	Passenger car & HD coverage with online programming	OE level diagnostics with bi-directional functions	Programs keys and has J2534 capabilities

# All commercial vehicles & off-road equipment FCAR HD scanners meet all your needs



- 1) Quick: scans in seconds
- 2) Easy: no learn curve, set it up and ready to diagnose
- 3) All software preloaded, never expire
- 4) Covers all truck, off road equipment & passenger car
- 5) DPF regen, DEF and soot reset to get out of de-rate
- 6) OEM level diagnostic all HD truck

The FCAR HD Scanners covers over 100 manufacturers of all major trucks, cars and off-road equipment in OEM level.

#### Commercial vehicles:

Allison	Duramax	John Deere	Sterling
Bendix	Eaton	Isuzu	Volvo/Mack
Caterpillar	Freightliner	Kenworth	Voith
Cummins	Hino	Mitsubishi Fuso	Western Star
Detroit	International	Peterbilt	Wabco
		Powerstroke	More vehicle makers

#### Off-road equipment:

Bobcat	Detroit	Hyundai	Kubota
Case	Doosan	Isuzu	Liebherr
Caterpillar	Deutz	John Deere	Volvo/Mack
Claas	Hino	Kobelco	.....
Cummins	Hitachi	Komatsu	More equipment makers



Model: F45N/F75G/F75N/F75B/F75W

**FCAR TECH USA**



Truck Diagnostics and Equipment

Call us now!

**844-322-7872**

Direct order or setup distribution

Support Tel: 443-380-0088

Sales Tel: 844-322-7872

Web: [www.fcarusa.com](http://www.fcarusa.com)

For more information visit [VehicleServicePros.com/12071292](http://VehicleServicePros.com/12071292)

## INNOVA<sup>®</sup>

# OEM LEVEL DIAGNOSTICS

— FOR —

## PRO-LEVEL TECHNICIANS

OBD2 and OEM  
DIAGNOSTICS

LIVE DATA

ACTIVE TEST

SERVICE  
RESET

SERVICE  
FUNCTIONS

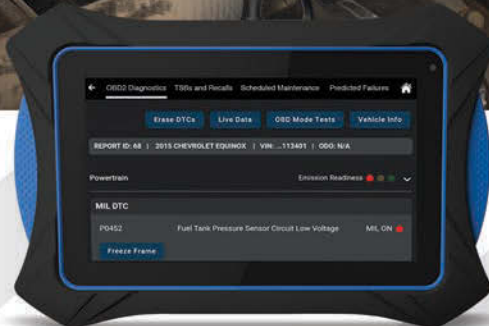
7111

## SDS SMART DIAGNOSTIC SYSTEM

The INNOVA 7111 Diagnostic Tablet runs on the fast and easy-to-use interface that INNOVA is known for—designed for the Pro-Level technician, providing automotive OEM grade diagnostics with speed and accuracy.



MORE INFORMATION



USA Customer Service 800-544-4124

For more information visit [VehicleServicePros.com/10094216](http://VehicleServicePros.com/10094216)

[INNOVA.COM](http://INNOVA.COM)



## RUNS PROFESSIONAL-GRADE FULL SYSTEM SCANS

The **OTOFIX D1 Diagnostic Tablet** is a professional-grade all-in-one handheld tool to read, analyze, and clear diagnostic trouble codes; reset steering angle sensors, service mileage, and service intervals; relearn parking brake-pad positioning; test and register a battery, and more. Powered by the OTOFIX cloud services app, users have access to data backups, past diagnostics history, and online solutions backed by OTOFIX Support. The OTOFIX D1 is built on an Android tablet featuring a 7" touchscreen, a built-in microphone and loudspeaker, onboard camera and flash, USB OTG/charging port, and a microSD card slot for unlimited data storage.

**For more information visit**  
[VehicleServicePros.com/21258527](http://VehicleServicePros.com/21258527)

## DISPLAYS FULL TROUBLE CODE DEFINITIONS

The **Electronic Specialties Code Buddy Pro+**, No. 904, is a code scanner that pulls/erases trouble codes and displays the live data stream. It reads hard, pending, and historic codes, and full trouble code definitions are displayed for easy identification. Other capabilities include I/M readiness, which can be used for emissions pre-tests and other emissions-related repairs. It also features the ability to retrieve vehicle VIN, CIN, and CVN numbers.

The Code Buddy is small and portable. For a repair shop, it can be deployed to quickly pull trouble codes before deploying the shop's full capability scanner.

**For more information visit**  
[VehicleServicePros.com/21253540](http://VehicleServicePros.com/21253540)



## WIRELESS PRINTING OF REPORTS FOR BOTH PRE-SCAN AND POST-SCAN RESULTS

The newly released **Zenith-5** from **CAS** is the latest edition to the Gscan family of scan tools. Advanced coverage capabilities for domestic, foreign, and light truck applications. Wireless printing of reports for both pre-scan and post-scan results as well as extensive ADAS calibration coverage. Of special note is the outstanding coverage for Hyundai, Kia, and Genesis car lines you will find with this tool.

**For more information visit** [VehicleServicePros.com/21266609](http://VehicleServicePros.com/21266609)

## PRODUCTS



SPONSORED CONTENT

# THINK BIG! THINK PHOENIX MAX!

<u>4-Channel Oscilloscope</u>	<u>Topology Mapping</u>	<u>Smart MDCI</u>
<u>Online Programming</u>	<u>ADAS Compatibility</u>	<u>Heavy Duty Truck Add-Ons</u>



FOR MORE INFORMATION ON THESE PRODUCTS,  
 CLICK ON "PTEN E-INQUIRY"  
 at [VehicleServicePros.com](http://VehicleServicePros.com)  
 OR CIRCLE THE NUMBER ON THE CARD.

**TOPDON**

[WWW.TOPDON.US](http://WWW.TOPDON.US)  
 400 Commons Way, Suite A,  
 Rockaway, NJ 07866-2030



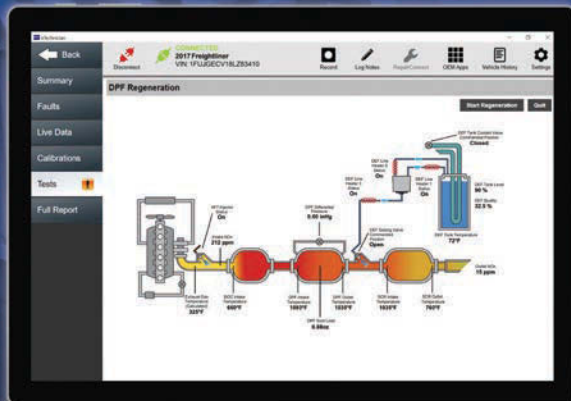
**TOPDON USA SUPPORT**  
 SCHEDULE A DEMO 833-629-4832  
 SUPPORT@TOPDON.US

©2022 TOPDON USA, INC. 2-2022 V2

**For more information visit** [VehicleServicePros.com/21080115](http://VehicleServicePros.com/21080115)

# EXPERIENCE, INGENUITY, AND KNOW-HOW

**NEXIQ Pocket HD™**  
Handheld Diagnostic Scan Tool  
with "All Makes" DPF Regen



**eTechnician™**  
The Most Advanced Truck  
Diagnostics Software Available

**USB-Link™ 2**  
The Commercial Vehicle  
Industry's Leading VCI



**NEXIQ Blue-Link™**  
Mobile Vehicle Interface  
9-pin and 16-pin

**NEXIQ First-Link™**  
Mobile Diagnostic App  
The First-Link™ App Is Available on  
the App Store and on Google Play



**Universal J560 PLC Adapter**  
Now interfaces with all  
WABCO® PLC Trailer Brakes



**NEXIQ Blue-Link™ Mini**  
WINNER: PTEN  
Innovation Award



## Delivering Industry-Leading Vehicle Diagnostic Solutions for More Than 40 Years

**NEXIQ**  
TECHNOLOGIES®

For more information visit [VehicleServicePros.com/10121770](http://VehicleServicePros.com/10121770)

For more information, contact NEXIQ Technologies at 800-639-6774 or [www.nexiq.com](http://www.nexiq.com).

# THE ONE TOOL TO SCAN THEM ALL



## TRUCK DIAGNOSTICS

### TEXA IDC5 TRUCK Individual Functions:

- Reading parameters and system status
- Reading errors
- Activation of individual components to check operation
- Setting and calibration functions



## CAR DIAGNOSTICS

### TEXA IDC5 CAR Individual Functions:

- Ranging from US to European and Asian vehicles
- Automatic scanning of all diagnosable ECUs on the vehicle
- ADAS calibrations, both dynamic and static with our RCCS2
- "SOLVED PROBLEMS" troubleshooting database powered by Google



Complete a DPF regen remotely

**TEXA**

TEXA USA inc.  
409 Joyce Kilmer Ave,  
New Brunswick, NJ, 08901  
www.texausa.com  
northamerica@texa.com

REQUEST A DEMO TODAY  
+1 855.200.8392

For more information visit [VehicleServicePros.com/10094929](http://VehicleServicePros.com/10094929)



# HEAVY DUTY DIAGNOSTIC

COMPANY	Autel	Bosch	CanDo Diagnostics Inc.	Cojali USA	Diesel Laptops	FCAR Tech USA	
<b>PRODUCT NAME</b>	MaxiSYS MS909CV	ESI Truck	HD Pro Tab	Jaltest Diagnostics	Diesel Tablet	F4SN Commercial Pad	
<b>Price</b>							
Under \$500							
\$501-\$1,000							
\$1,001-\$3,000							
\$3,001-\$5,000					●	●	
\$5,001-\$7,000	●		●				
\$7,001-\$9,000				●			
\$9,001 to \$10,000		●					
More than \$10,000							
(OR) Subscription (monthly cost)	\$1,495/yr / first yr included						
Additional cost per update or included		\$1,200	2 years free	\$1,085	\$500	\$0	
<b>Enhanced/Proprietary Coverage</b>							
<b>Engine Modules - Heavy Duty</b>							
Caterpillar	●	●	●	●	●	●	
Cummins	●	●	●	●	●	●	
Detroit Diesel	●	●	●	●	●	●	
International/Navistar	●	●	●	●	●	●	
Kenworth/Peterbilt (PACCAR)	●	●	●	●	●	●	
Mack/Volvo	●	●	●	●	●	●	
<b>Engine Modules - Medium Duty</b>							
Chrysler	●	●	●	●	●	●	
Cummins	●	●	●	●	●	●	
Ford	●	●	●	●	●	●	
GM	●	●	●	●	●	●	
Hino	●	●	●	●	●	●	
Isuzu	●	●	●	●	●	●	
International/Navistar	●	●	●	●	●	●	
Mitsubishi Fuso Truck of America	●	●	●	●	●	●	
Kenworth/ Peterbilt (PACCAR)	●	●	●	●	●	●	
<b>Brakes</b>							
Bendix	●	●	●	●	●	●	
Haldex	●	●	●	●	●	●	
Wabco	●	●	●	●	●	●	
<b>Transmission</b>							
Allison	●	●	●	●	●	●	
Eaton	●	●	●	●	●	●	
<b>Scanning Functions</b>							
Reads trouble codes	●	●	●	●	●	●	





# FIND YOUR FASTEST PATH TO FIXED.

Get all the information you need—and only what you need—the next time you need to make the right repair.

Only a system as smart as Fast-Track® Intelligent Diagnostics can filter a universe of vehicle-specific data, constantly updated through a convenient cloud-based platform, to help you make quick, confident repairs and get your customers back on the road.

No other company can match our data or our customer service, and no other company can make it all this easy to use. Bring more “flow” to your diagnostic workflow at [diagnostics.snapon.com/id](https://diagnostics.snapon.com/id).



Fast-Track Intelligent Diagnostics from Snap-on.  
Available on the APOLLO, TRITON and ZEUS.

For more information visit [VehicleServicePros.com/10095583](https://VehicleServicePros.com/10095583)

Smarter.  
Faster.  
Fixed.





AUTEL MAXISYS CV

MS909CV + BATTERY

# LARGE & IN CHARGE

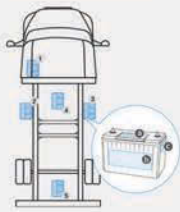
HEAVY DUTY

MS909CV



Battery information

1. Possible location of the battery on the vehicle (1/2/3/4/5)  
2. Possible location of the battery information on the battery (a/b/c)



Battery voltage: 12V

Type	Standard	Capacity
		1700
		1750
FLOODED	CCA	1800
AGM	SAE	1800
AGM SPIRAL	CA	1800

Next

AUTEL  
MaxiFlash VCI  
SAE J2534  
RP1210  
ISO 22900

BATTERY TOOL WITH CLAMPS INCLUDED

MOST COMPREHENSIVE HEAVY DUTY DIAGNOSTIC TABLET IN THE INDUSTRY

## BATTERY, INTELLIGENT, DIAGNOSTICS AND ADAS CALIBRATION ALL IN ONE TABLET

### BATTERY FEATURES INCLUDES: CURRENT CLAMP & MULTIMETER

- Support In-Vehicle and Out-Of-Vehicle Testing
- Generated HD Battery Test & Health Report
- Test 6- and 12-Volt Batteries: 100 - 2000 CCA
- Test 12- and 24- Cranking/Charging Systems
- Test Flooded, AGM, AGM Spiral, EFB and GEL Batteries
- Compatible with CCA, CA, SAE, EN, IEC, DIN, JIS and MCA

### MS909CV FEATURES INTELLIGENT DIAGNOSTICS

- Covers Over 80 Makes & Models
- Lightning-Fast All System AutoSCAN
- Module Topology On Select Vehicles
- Bi-Directional Controls/Active Tests
- Module Programming with MaxiFlash VCI
- ADAS Calibration (additional purchase may be required)



TRIAGE ROAD SERVICE

AUTEL MAXISYS MS906CV

AFFORDABLE MAINTENANCE ESSENTIAL DIAGNOSTICS

For more information visit [VehicleServicePros.com/10095724](http://VehicleServicePros.com/10095724)

SUPPORT: 1.855.288.3587  
EMAIL: [USSUPPORT@AUTEL.COM](mailto:USSUPPORT@AUTEL.COM) | WEB: [AUTEL.COM](http://AUTEL.COM)  
VIEW MARKETING MATERIAL: [ISSUU.COM/AUTEL2](http://ISSUU.COM/AUTEL2)  
FOLLOW US @AUTELTOOLS    

AUTEL LIVE CHAT TECH SUPPORT

AUTEL TECH SUPPORT ASE TECHNICIAN

AUTEL

# HEAVY DUTY DIAGNOSTIC

COMPANY	Autel	Bosch	CanDo Diagnostics Inc.	Cojali USA	Diesel Laptops	FCAR Tech USA	
<b>PRODUCT NAME</b>	MaxiSYS MS909CV	ESI Truck	HD Pro Tab	Jaltest Diagnostics	Diesel Tablet	F4SN Commercial Pad	
Displays vehicle information/VIN #	●	●	●	●	●	●	
Displays heavy duty standard codes	●	●	●	●	●	●	
Displays heavy duty proprietary codes	●	●	●	●	●	●	
<b>Enhanced Bi-directional Controls</b>							
Anti-lock brake system (ABS)	●	●	●	●	●	●	
Automatic transmissions	●	●	●	●	●	●	
Injector cutout	●	●	●	●	●	●	
Injector programming	●	●	●	●		●	
Manual/forced regeneration Y/N	Y	Y	Y	Y	Y	Y	
Replace DPF/ash reset	●	●	●	●	●	●	
SCR/DEF controls	●	●	●	●	●	●	
Trailer brakes (ABS/EBS)	●	●	●	●	●	●	
Calibrations for variable vane turbo (Choose all that apply: Cummins, Detroit Diesel, International/Navistar, PACCAR, Mack/Volvo) or ALL	ALL	ALL	ALL	ALL	All	All	
<b>Live Data Stream - Digital</b>							
Data logging	●	●	●	●	●	●	
Guided diagnostics	●	●		●	●	●	
Graphs live data on screen	●	●	●	●	●	●	
Graphs multiple values on screen simultaneously (list how many)	3	6	8	8	20	7	
Auto identification by VIN #	●	●	●	●	●	●	
Provides NOX values for diagnosis of emissions related failures	●	●		●	●	●	
<b>Unit Features</b>							
Unit type (PC-based, separate tablet/smartphone, standalone tablet)	Standalone Tablet	Standalone Tablet / PC-based	Standalone Tablet	PC-based	Standalone Tablet	Standalone Tablet	
Requires separate laptop or PC (Y or N)	N	N	N	Y	N	N	
Operating system (Windows, Android, iOS)	Android	Windows 10	Android	Windows	Android	Android	
Storage (in GB)	128GB	128GB	32GB		128GB	30GB	
Expandable storage	32GB	●	●			●	
Multilingual - on screen definitions in English/Spanish/French	●	●	●	●		●	
Internal battery included	●	●	●		●	●	
Length of time to fully charge unit	180 minutes	30 minutes	90 minutes		90 minutes	90 minutes	
Length of time unit runs on one charge	8-10 hours	4 hours	8 hours		8 hours	7 hours	
Unit powers off vehicle		●	●		●	●	
Unit boot-up time (from "on" button to usable screen)	20 seconds	40 seconds	5 seconds		25 seconds	20 seconds	
High-resolution color screen	●	●	●		●	●	
Touchscreen interface	●	●	●		●	●	
Screen size (in inches)	9.7"	10"	10.1"		10.1"	8"	
Print diagnostic report via (cable, Wi-Fi, PC, app)	●	Wi-Fi	Wi-Fi	PC	Wi-Fi	Wi-Fi	
USB port	●	●	●	●	●	●	

	Launch Tech USA	Mac Tools	Matco Tools	NEXIQ	Noregon	Snap-on	TEXA USA	THINKCAR Tech, Inc.	TOPDON USA
	X431 TORQUE HD	ET8250-HD	MDMAX4CLHD	eTechnician	JPRO Professional	PRO-LINK EDGE	IDC5 TRUCK	Platinum HD	Phoenix Max
	●	●	●	●	●	●	●	●	●
	●	●	●	●	●	●	●	●	●
	●	●	●	●	●	●	●	●	●
	●	●	●	●	●	●	●	●	●
	●	●	●	●	●	●	●	●	●
	Y	Y	Y	Y	Y	Y	Y	Y	Y
	●	●	●	●	●	●	●	●	●
	●	●	●	●	●	●	●	●	●
	●	●	●	●	●	●	●	●	●
	All	All	All	ALL	Cummins, Mack, Volvo	ALL	ALL	Cummins, PACCAR, Mack	ALL
	●	●	●	●	●	●	●	●	●
	●	●	●	●	●	●	●	●	●
	●	●	●	●	●	●	●	●	●
	8	6	●	10	7+	10	ALL	4	16
	●	●	●	●	●	●	●	●	●
	●	●	●	●	●	●	●	●	●
	Standalone Tablet	Standalone Tablet / PC-based	Standalone Tablet	PC-based	PC or Tablet	Handheld	Standalone Tablet	Standalone Tablet	Standalone Tablet
	N	N	N	Y	N	N	N	N	N
	Android	Windows 10	Android 9	Windows 10	Windows	Windows Mobile	Windows 10	Android	Android
	64GB	128GB	8GB	PC Dependant	512GB	8GB	256GB	64GB	8GB RAM 256GB ROM
	●	●	256GB	PC Dependant	●	●	●	●	●
	●	●	●	●	●	●	●	●	●
	●	●	●	●	●	●	●	●	●
	200 minutes	30 minutes	60 minutes	PC Dependant	90 minutes	90 minutes	120 minutes	180 minutes	150 minutes
	12 hours	4 hours	6-8 hours	PC Dependant	Up to 14 hours	10 hours	8 hours	8 hours	12 hours
	●	●	●	●	●	●	●	●	●
	27 seconds	40 seconds	22 seconds	PC Dependant	35 seconds	15 seconds	45 seconds	39 seconds	20 seconds
	●	●	●	PC Dependant	●	●	●	●	●
	●	●	●	PC Dependant	●	●	●	●	●
	10.1"	10"	13.3"	PC Dependant	10-14"	10.1"	12"	10"	13.3"
	Wi-Fi	Wi-Fi	●	PC Dependant	Wi-Fi	Wi-Fi, cable	●	Wi-Fi	Wi-Fi, PC, Smartphone
	●	●	●	PC Dependant	●	●	●	●	●

# HEAVY DUTY DIAGNOSTIC

COMPANY	Autel	Bosch	CanDo Diagnostics Inc.	Cojali USA	Diesel Laptops	FCAR Tech USA	
<b>PRODUCT NAME</b>	MaxiSYS MS909CV	ESI Truck	HD Pro Tab	Jaltest Diagnostics	Diesel Tablet	F4SN Commercial Pad	
VGA port			●				
HDMI port	●	●	●		●	●	
VCI - unit-to-car capabilities (wired or wireless)	Wireless	Both	Wireless	Both	Wireless	Wired	
Internet (Wi-Fi, ethernet, both)	Wi-Fi	Both	Both	Wi-Fi	Both	Both	
Remote diagnostic support	●	●	●	●	●	●	
Light/medium duty capabilities? Y/N	Y	Y	Y	Y	Y	Y	
<b>Available Tool Add-Ons and Cables</b>							
3-pin Deutsch		Add-on	●	●		●	
6-pin Deutsch	●	●	●	●	●	●	
9-pin Deutsch (J1939 type 2)	●	●	●	●	●	●	
9-pin CAT Deutsch		●	●	●		●	
8-pin Volvo		Add-on	●	●		●	
14-pin Volvo		Add-on	●	●		●	
Automotive 16-pin J1962	●	●	●	●	●	●	
Mack/Volvo 16-pin J1962	●	●	●	●	●	●	
Labscope capability				●		●	
Multimeter				●		●	
ADAS capability	Optional	●	●	●		Optional	
OBD-II	●	●	●	●	●	●	
<b>Software, Website, Support &amp; Service Features</b>							
Manufacturer's warranty (length of time, in years)	1 year	1 year	2 years	1 year	1 year	1 year	
Date range of vehicles covered (Pre-OBD-II, OBD-II, or Both)	OBD-II	Both	Both	Both	OBD-II	Both	
Call-in support (provide U.S. phone number)	855-288-3587	855-267-2483	909.CanDo-11	305 960-7651	888-983-1975	844-322-7872	
Remote support for device	●	●	●	●	●	●	
Remote diagnostics & repair support	●	●	●	●	●	●	
Create support ticket on device	●	●		●	●		
In-person field/rep support		●	●			●	
Expert technician support	●	●	●	●	●	●	
Support cost (Included, per use, subscription-based)	Included	Included	Included	Subscription-based	Included	Included	
File saving ability? Y/N	Y	Y	Y	Y	Y	Y	
File exporting ability? Y/N	Y	Y	Y	Y	Y	Y	
Ability to run enhanced software from application? Y/N		Y	Y	Y	Y	Y	
Updatable via the Internet	●	●	●	●	●	●	
Updates subscription based (Y or N)	Y	Y	Y	Y	Y	Y	
Updates: Optional or mandatory	Optional	Optional	Optional	Optional	Optional	Optional	
Optional repair solution database (list all that apply)		ESI [Truck] Repair	Motor FleetCross	Jaltest Info Online and Jaltest Info Web			
Supplemental repair instructions/videos	●	●	●	●	●	●	
Includes the following repair information services - e.g. NextStep, Mitchell 1, etc. (list all that apply)		Bosch Troubleshooting	Motor FleetCross	Jaltest Info Online	Diesel Repair	Mitchell 1, FleetCross	
<b>Most Important Feature</b>	Advanced diagnostics with battery and ADAS capability	Advanced diagnostics for trucks and off-highway vehicles	Class 4-8 and off-highway all in one tool	Diagnostics and technical information for every ECM	Bi-directional commands with integrated repair information	Bi-directional control with most HD OEMs	

	Launch Tech USA	Mac Tools	Matco Tools	NEXIQ	Noregon	Snap-on	TEXA USA	THINKCAR Tech, Inc.	TOPDON USA
	X431 TORQUE HD	ET8250-HD	MDMAX4CLHD	eTechnician	JPRO Professional	PRO-LINK EDGE	IDC5 TRUCK	Platinum HD	Phoenix Max
				PC Dependant	●		●		
		●	●	PC Dependant	●	●	●		●
	Wireless	Both	Wireless	PC Dependant	Wired	Wired	Both	Wired	Wireless
	Wi-Fi	Both	Wi-Fi	PC Dependant	Both	Wi-Fi	Both	Wi-Fi	Wi-Fi
	●	●		●	●	●	●	●	●
	Y	Y	Y	Y	Y	Y	Y	Y	Y
		Add-on	●	●	●	●	●	●	
	●	●	●	●	●	●	●	●	●
	●	●	●	●	●	●	●	●	●
	●	●	●	●	●	●	●	●	●
	●	Add-on	●	●	●	●	●	●	
	●	Add-on	●	●	●	●	●	●	
	●	●	●	●	●	●	●	●	●
	●	●	●	●	●	●	●	●	●
	●	●	●	●	●	●	●	●	●
	●	●	●	●	●	●	●	●	●
	●	●	●	●	●	●	●	●	●
	●	●	●	●	●	●	●	●	●
	●	●	●	●	●	●	●	●	●
	●	●	●	●	●	●	●	●	●
	1 year	1 year	2 years	1 year	3 years laptop, 1 year adapter	1 year	1 year	1 year	Valid with a current subscription
	Both	Both	Both	Both	Both	Both	Both	Both	OBD-II
	877-528-6249	855-267-2483	877-853-3738	800-639-6774	855-889-5776	800-311-5452	855-200-8392	833-692-2766	833-629-4832
	●	●	●	●	●	●	●	●	●
	●	●		●	●	●	●	●	●
	●	●	●		●	●	●	●	●
	●	●	●		●	●	●		●
		●			Addl. cost	●	●	●	●
	Included	Included		Included	Included	Included	Included	Included	Basic support Incl. Advanced avail. w/ cost
	Y	Y	Y	Y	Y	Y	Y	Y	Y
	Y	Y	Y	Y	N	Y	Y	Y	Y
	Y	Y	Y	Y	Y	Y	Y	N	N
	●	●	●	●	●	●	●	●	●
	Y	Y	N	Y	Y	N	Y	Y	Y
	Optional	Optional	Optional	Optional	Optional	Optional	Optional	Optional	Optional
				Mitchell 1 Repair Connect	NextStep Repair	Mitchell 1 Repair Connect	TEX@INFO		Any repair database that supports a browser
	●	●			●		●		●
	Motor	Bosch Troubleshooting		Mitchell 1	NextStep Repair	Mitchell 1	TEX@INFO		
	Bi-directional control with most HD OEMs	Advanced diagnostics for trucks and off-highway vehicles	HD, motorcycle, carlines, Maxfix all in one	Most comprehensive support	Industry's most user-friendly diagnostic tool	Most comprehensive handheld	Tough hardware, remote regenerations , off-highway/car/powersports available	Unmatched passenger car & HD coverage with coding	Automotive coverage included

# COMPANY DIRECTORY

## ALLDATA

alldata.com

## Autel

autel.com

## Autoland Sciencetech

autolandsciencetechusa.com

## Automotive Test Solutions

automotivetestsolutions.com

## Bosch

boschdiagnostics.com

## CanDo International

candointl.com

## Cojali USA

jaltest.com

## Continental

autodiagnospro.com

## Diesel Laptops

diesellaptops.com

## FCAR Tech USA

fcarusa.com

## Harbor Freight

harborfreight.com

## Hunter

hunter.com

## Injectronic

injectronictech.com

## Innova

innova.com

## Launch Tech USA

launchtechusa.com

## Mac Tools

mactools.com

## Matco Tools

matcotools.com

## NEXIQ

nexiq.com

## Noregon

noregon.com

## Opus | IVS

opusivs.com

## Snap-on Diagnostics

diagnostics.snapon.com

## TEXA USA

texausa.com

## Thinkcar

mythinkcar.com

## TOPDON USA

topdonusa.com

## XToolUSA

xtoolusa.com

## Working on Commercial Vehicles & Off-highway Equipment? CanDo has YOU Covered.

HDPROTAB



- IP67 Wireless 10" Tablet
- Class 4-8 and Off-highway
- Full Bi-directional Controls
- Change/Set Parameters
- 2 Years Free Software
- All Cables and Connectors included

HDPROIII



- Wired Android 10" Tablet
- Class 4-8 and Off-highway
- Full Bi-directional Controls
- Change/Set Parameters
- 2 Years FleetCross Troubleshooter included
- 2 Years Free Software
- All Cables and Connectors included

OHVPRO



- IP67 Wireless 8" Tablet
- Off-highway Equipment
- Generic and Diesel OBD
- Full Bi-directional Controls
- Change/Set Parameters
- Calibrate Hydraulics
- 2 Years Free Software
- All Cables and Connectors included

MLTPRO



- IP67 Wireless 8" Tablet
- Medium and Light Duty Truck including Jeep and Sprinter
- Full Bi-directional Controls
- Special Functions: Injector Programming, Module Recoding, DPF Reset/Regen and more!
- 2 Years Free Software
- All Cables and Connectors included

HDCODEII



- Read/Clear Codes & View/Graph Live Data for Engine, Brakes & Transmission
- DPF Reset & Regen for Cummins, Detroit, International, Isuzu & Mitsubishi FUSO
- Caterpillar Injector Cutout
- Incl. 6&9 pin connector & CAT 9 pin
- Free Lifetime Updates

HDTIPS



- Activate/Read Sensors
- Check Tire Pressure
- Check Tire Temperature
- Display and Identify Sensors
- Manage up to 22 tires
- 3 years free software!

HDMOBILE



- Wireless Smart Device VCI
- Read/Clear Codes
- Performs DPF Reset/Regen: Detroit, Cummins, Isuzu, Mack and Volvo, International and Fuso
- New Data Logging Feature
- Lifetime free updates

www.candointl.com | 909-CanDo-11(226-3611)

**CanDo**  
INTERNATIONAL, INC.

Recently Added Coverage for: Bendix Wingman, Detroit Assurance, CASE IH, JCB & Liebherr

For more information visit [VehicleServicePros.com/11078899](http://VehicleServicePros.com/11078899)

**BOSCH**

Invented for life



# Expert-level solutions for heavy-duty problems

A powerhouse lineup of connected diagnostic solutions that work together seamlessly to solve complex, cross-functional problems at every stage of the repair process. Engineered to optimize troubleshooting, boost efficiency, and alleviate tedious tasks while empowering you to focus your expertise on delivering quality repairs with precision and confidence.



## HPT 500 High Pressure Leak Tester

The Bosch HPT 500 high pressure leak tester is a cost-effective, safe alternative that will change standard practices for heavy duty preventive maintenance and repair.



## HDS 250 Heavy-Duty Scan Tool

Read, diagnose and clear heavy duty standard trouble codes on class 4 - 8 vehicles.



## BAT 155 Heavy-Duty Battery Tester

The BAT 155 is an advanced heavy duty battery & electrical system tester designed for the commercial vehicle industry.



## 3824A ESI[truck] Heavy-Duty Scan Tool

With easy-to-use software and a massive array of technical information, technicians can perform an ultra-fast and accurate diagnosis on North American commercial and heavy duty vehicles to get the repair done right and the vehicle back in operation.

*Solutions for every job.*

[boschdiagnostics.com](http://boschdiagnostics.com)

For more information visit [VehicleServicePros.com/10122252](http://VehicleServicePros.com/10122252)

**jaltest**  
BY COJALI



BECAUSE  
DIAGNOSTICS  
**CAN BE EASY.**

[cojaliusa.com](http://cojaliusa.com)

For more information visit [VehicleServicePros.com/10942695](http://VehicleServicePros.com/10942695)



Watch  
Your  
Story