

PTEN

PROFESSIONAL TOOL & EQUIPMENT NEWS

\$15.00 • April 2023
Volume 34, Number 3



AFTERMARKET PROFILE

WHAT ARE SHOP
OWNERS AND TECHS
BUYING THIS YEAR?

PAGE 16

CATEGORY SPOTLIGHT

POWER AND
AIR TOOLS

PAGE 36

RCCS3 DIGITAL TARGET REPRESENTATION

ADAS CALIBRATION OEM SPECIFIED
DIGITAL POSITIONING SYSTEM

BY TEXA



▲ Measures down
to +/-0.01mm



▲ Holds bits firmly
in place



▲ Solid textured
and contoured
handle

DETAILS ON THE COVER PRODUCTS
AND OTHER NEW TOOLS **PAGE 10**

TEXA

SMARTER CONNECTIVITY

MULTI-ENVIRONMENT VEHICLE INTERFACE

Single Diagnostic VCI Able to Auto Select Advanced Protocol and Connection Options
Backlit Display Confirmation of System Voltage and 40+ Messages



NAVIGATOR TXT MULTIHUB



TEXA A/C SERVICES

RECOVERY
RECYCLING
RECHARGING
EQUIPMENT

KONFORT 780 TOUCH

- R1234yf / R134a
- Separate 20lb Tanks
- Android Touchscreen
- Full Auto Functions
- WiFi - BT Compatible



KONFORT 760 TOUCH

- R1234yf System
- 20lb Tank In Cabinet
- Android Touchscreen
- Full Auto Functions
- WiFi - BT Compatible



KONFORT 750R

- R134a System
- 50lb Tank In Cabinet
- 9ft Service Hoses
- Full Auto Functions
- Double Stage Pump



409 JOYCE KILMER AVENUE
NEW BRUNSWICK, NJ 08901

NORTHAMERICA@TEXA.COM

WWW.TEXAUSA.COM



Circle 1 on card or click "PTEN e-inquiry" on VehicleServicePros.com



- 37150: Deluxe A/C Clutch Hub Puller & Installer Set
- 68988: R134a Professional A/C Kit
- 24609: Rechargeable Diagnostic Work Light
- 25245: Infrared Thermometer
- 37377: A/C Flush Kit

Get Cool for Summer with OEMTOOLS A/C Repair and Coolant Tools



EVERY JOB IS A GO.
Over 2,500 Specialty Tools and Equipment
To Give Your Jobs the Green Light.

Scan for Deals on OEMTOOLS A/C Repair and Coolant Tool
or go to this link: [BIT.LY/STAYCOOL](https://bit.ly/staycool)



Circle 2 on card or click "PTEN e-inquiry" on [VehicleServicePros.com](https://www.vehicleservicepros.com)

CONTENTS

PTEN
PROFESSIONAL TOOL & EQUIPMENT NEWS

Published by Endeavor Business Media, LLC

ENDEAVOR 30 Burton Hills Blvd, Ste 185
BUSINESS MEDIA Nashville, TN 37215
800-547-7377

Printed in the U.S. Volume 34, Number 3; April 2023

EXECUTIVE VICE PRESIDENT – TRANSPORTATION
Kylie Hirko 630-253-4034 Kylie@VehicleServicePros.com

VP/GROUP PUBLISHER, ENDEAVOR VEHICLE REPAIR GROUP
Chris Messer 651-206-3168 CMesser@EndeavorB2B.com

EDITOR Emily Markham
920-234-6359 Emily@VehicleServicePros.com

ASSOCIATE EDITOR Kayla Nadler
920-563-1764 Kayla@VehicleServicePros.com

ASSOCIATE SALES DIRECTOR Mattie Gorman-Greuel
920-563-1636 MGorman@EndeavorB2B.com

DIRECTOR OF BUSINESS DEVELOPMENT Cortni Jones
920-568-8391 CJones@EndeavorB2B.com

MULTIMEDIA ACCOUNT EXECUTIVE Diane Braden
920-568-8364 DBraden@EndeavorB2B.com

MULTIMEDIA ACCOUNT EXECUTIVE Lisa Mend
949-259-5654 LMend@EndeavorB2B.com

MULTIMEDIA ACCOUNT EXECUTIVE Michael Parra
925-307-8779 MParra@EndeavorB2B.com

MULTIMEDIA ACCOUNT EXECUTIVE Sean Thornton
269-449-0257 SThornton@EndeavorB2B.com

INSIDE SALES Mackenzie Verschoor
651-846-9472 MVerschoor@EndeavorB2B.com

PRODUCTION MANAGER Jane Pothlanski
224-324-8507 JPothlanski@EndeavorB2B.com

AD SERVICES MANAGER Carmen Seeber
920-568-8373 CSeeber@EndeavorB2B.com

ART DIRECTOR Tim Schafer

LIST RENTAL REP Michael Costantino
402-836-6266 Michael.Costantino@infogroup.com

LIST RENTAL REP Kevin Collopy
402-836-6265 Kevin.Collopy@infogroup.com

AUDIENCE DEVELOPMENT MANAGER Debbie Dumke

ENDEAVOR BUSINESS MEDIA, LLC

CEO – Chris Ferrell

President – June Griffin

CFO – Mark Zadell

COO – Patrick Rains

CRO – Reggie Lawrence

Chief Administrative and Legal Officer – Tracy Kane

EVP Marketing Solutions & Data – Jacquie Niemiec

Subscription Customer Service

877-382-9187; 847-559-759

Circ.ProfDistmag@omeda.com

PO Box 3257 • Northbrook IL 60065-3257

Article reprints reprints@endeavorb2b.com

Professional Tool & Equipment News (USPS 012-426, ISSN 1081-4485 print; ISSN 2150-2072) is published ten times a year in February, March, April, May, June, July, August, September, October, and December by Endeavor Business Media, LLC, 1233 Janesville Avenue, Fort Atkinson, WI 53538. Periodicals postage paid at Fort Atkinson, WI 53538 and additional mailing offices. POSTMASTER: Send address changes to *Professional Tool & Equipment News*, PO Box 3257, Northbrook, IL 60065-3257. Canada Post PM40612608. Return undeliverable Canadian addresses to: *Professional Tool & Equipment News*, PO Box 25542, London, ON N6C 6B2.

Subscriptions: Individual subscriptions are available without charge in the U.S. to qualified subscribers. Publisher reserves the right to reject non-qualified subscriptions. Subscription prices: U.S. \$50 per year, \$93 two year; Canada/Mexico \$72 per year, \$131 two year; All other countries \$105 per year, \$195 two year. All subscriptions payable in U.S. funds, drawn on U.S. bank. Canadian GST #842773848. Back issue \$10 prepaid, if available. Printed in the USA. Copyright 2022 Endeavor Business Media, LLC.

All rights reserved. No part of this publication may be reproduced or transmitted in any form or by any means, electronic or mechanical, including photocopy, recordings or any information storage or retrieval system, without permission from the publisher.

Endeavor Business Media, LLC does not assume and hereby disclaims any liability to any person or company for any loss or damage caused by errors or omissions in the material herein, regardless of whether such errors result from negligence, accident or any other cause whatsoever. The views and opinions in the articles herein are not to be taken as official expressions of the publishers, unless so stated. The publishers do not warrant, either expressly or by implication, the factual accuracy of the articles herein, nor do they so warrant any views or opinions offered by the authors of said articles.



11

ON OUR COVER

RCCS3 Digital Target Representation 75" 4K Monitor by TEXA

Details on
page 10



36

EXCLUSIVES



16 2023 AFTERMARKET PROFILE

See the feedback from shop owners and technicians on purchase plans and industry expectations for the coming year.

18 Buying Tools & Equipment

22 Maintenance & Repair

23 Battery Service

24 Diagnostics

26 Inside the Shop

28 Power Tools

28 A/C Service

29 Tire & Wheel

29 Training

30 INNOVATION AWARDS PROFILE

We chat with Ingersoll Rand about their awarding-winning 1" Cordless Impact Wrench, No. W9691.

PRODUCTS

10 NEW PRODUCTS

Check out the latest offerings from Clore Automotive, Coxreels, NextLED, and more.

32 TOOL REVIEWS

Our review panel tests out four different tools and gives their feedback.

36 CATEGORY SPOTLIGHT

Power Tools & Air Tools

COLUMNS

8 EDITOR'S NOTE

Numbers never lie

42 BIG-TIME BOXES

Taylor Ray, Garage Built Co. in DeBary Fla.



42

DIAG EVOLUTION

GAS | DIESEL + HYBRID | EV



MAXISYS MS909EV

EVDIAG BOX + VCI

INCLUDES ALL FEATURES OF THE MS909

MAXISYS ULTRA EV

EVDIAG BOX + 5-IN-1 VCI

INCLUDES ALL FEATURES OF THE ULTRA

- DETAILED BATTERY PACK DIAGNOSTICS
- STATE OF CHARGE & STATE OF HEALTH ANALYSIS
- SPECIALIZED BATTERY ANALYSIS VIA BMS
- DETAILED CABLE CONNECTION DIAGRAMS



EVDIAGKIT ▶

UPGRADE YOUR MS909, MS919, ULTRA

KIT INCLUDES

EVDIAG Box & Adapters for Specific Electric Vehicles to Perform Battery Pack Analysis.
(Connects to MaxiFlash VCI or VCI)

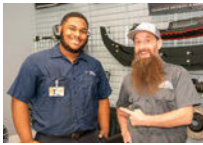
NOW ONLINE AT **VEHICLESERVICEPROS**.com

PHOTO GALLERY



The Midwest Auto Care Alliance's VISION Hi-Tech Training and Expo, March 2-5 in Overland Park, Kan., boasted record attendance of around 3,500, including 970 first-time training attendees. This year's theme was Amp Up!
[VehicleServicePros.com/53027863](https://www.vehicleservicepros.com/53027863)

TECHNICIAN PROFILE



TechForce Humble Mechanic scholarship winner I'Rule Faison learns all he can by applying himself in his schooling and apprenticeship. He has his sights set on becoming a Volkswagen master technician.

[VehicleServicePros.com/53026493](https://www.vehicleservicepros.com/53026493)

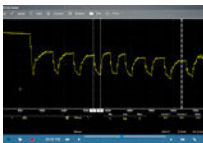
SHOP SERVICES



Looking to expand your shop services into ADAS? Entering the space of ADAS calibration doesn't need to be scary; shop owners can manage this by taking small steps that make sense for their shop instead of a giant leap.

[VehicleServicePros.com/21295903](https://www.vehicleservicepros.com/21295903)

CASE STUDY



A 2002 Ford Explorer was brought in with a no-start after a PCM install. The engine did start after a parameter reset, but a short time later it wouldn't start again.

[VehicleServicePros.com/21293650](https://www.vehicleservicepros.com/21293650)

SHOP SAFETY



While color might seem like a non-vital style element, colorful PPE can help improve shop safety. Here are four tips for choosing colorful PPE and how they can help improve safety.

[VehicleServicePros.com/53027179](https://www.vehicleservicepros.com/53027179)

FEATURED PRODUCTS



FLIR

ONE Edge Pro
[VehicleServicePros.com/53012979](https://www.vehicleservicepros.com/53012979)



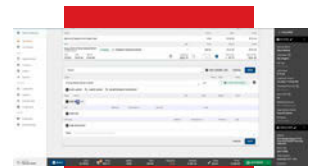
Proflex+

Pro MX-700T Smoke
Monster Leak Locator
[VehicleServicePros.com/53027319](https://www.vehicleservicepros.com/53027319)



Mueller-Kueps

LED-DUO Lamp,
No. 904 996
[VehicleServicePros.com/53027684](https://www.vehicleservicepros.com/53027684)



Tekmetric

RepairLink by
OEConnection
[VehicleServicePros.com/53027472](https://www.vehicleservicepros.com/53027472)

RAISING THE

STANDARDS OF EXCELLENCE

AP SERIES™

*NEW 360-Degree Automatic Swing Arm Restraint System
Provides the Ultimate In Safety and Vehicle Fall Protection*

**NEW
ARRIVAL**
SHOP NOW



Model: **10AP**
10K lb. Capacity
Two-Post Lift



Certified to meet the
standards of ANSI/ALI
ALCTV: 2017

LEARN MORE 



Bi-Metric Swing Arms

Our 10AP Series offers the convenience of wide or narrow installation wrapped up into one configurable package. This durable, safe, and reliable car lift features an expandable top beam and BI-METRIC™ arms to suit virtually every vehicle lifting requirement – symmetric or asymmetric. The 2-in-1 design gives operators the option of loading vehicles either symmetrically (centerline of vehicle at column) or asymmetrically (centerline of vehicle behind column). The simple, yet highly sophisticated is sure to keep operating costs low and productivity high. Check out the full line of 10AP lift series at bendpak.com/10AP or call us at **1-800-253-2363**.

1-800-253-2363 • BENDPAK.COM

©2023 BendPak Inc. All rights reserved.

BendPak®

Circle 4 on card or click "PTEN e-inquiry" on VehicleServicePros.com



Numbers never lie

This year's Aftermarket Profile results are in, and the numbers will tell you exactly what you need to know about which tools and equipment you should be adding to your shop, what training your techs need, and so much more.

By Emily Markham, Editor
EMarkham@EndeavorB2B.com

It's time for one of my favorite issues of the year! As many of you know, our April issue showcases our Aftermarket Profile. This yearly PTEN purchasing study consists of data gathered from shop owners and technicians across the country. We asked questions about the types of repairs and services you perform, the tools and equipment you own, your current and future purchasing plans, and much more.

Taking a quick look at the findings, it's no surprise that 49 percent of you noted diagnostic and electrical services as one of the top five service opportunities for your shop. As the years go by, vehicles are only becoming more and more complex. With the addition of all the sensors and cameras needed for ADAS, advanced infotainment centers, and hybrid/EV batteries, the technicians at your shops are likely seeing more diagnostic and electrical repairs than ever.

This leads me to my next statistic. According to our findings, 66 percent of you plan on purchasing electrical tools/equipment in 2023. This falls in line with what we've been talking about,

but what I found most interesting was how many of you use print magazines (92 percent), videos (41 percent), and eNewsletters (23 percent) to help make your purchasing decisions. I love seeing that print magazines are No. 1, though I might be a *bit* biased. Even if the other sources I mentioned aren't as highly referenced, be sure you're signed up for our newsletter and subscribed to PTEN's YouTube channel to receive exclusive content about the latest tools and equipment hitting the market.

Moving on, with all these potentially complex repairs coming into your shops and the advanced equipment needed to fix them, training will need to be top of mind. Our respondents noted that electrical/electronic systems (62 percent), hybrids/EVs (48 percent), and engine performance/drivability (47 percent) were the top three training opportunities for shops. To get training on these topics, the respondents noted they used manuals (56 percent), YouTube (54 percent), trade magazines (53 percent), and online webinars (50 percent). If you're looking for some industry training to keep your shop on top, take a look at our Training and Events Calendar at vehicleservicepros.com/events.

I could go on about other statistics found in the survey, but I think you'll get more out of this by checking it out yourself. Flip to page 16 for the full survey results.

If you have any questions or just want to discuss the findings in this report, feel free to reach out. As PTEN's new editor, I'm looking forward to chatting with as many of you as I can about this and many other topics down the road. ❌

Editor's Correction: In the Diagnostic Tech article featured in our February issue, an image of the Automotive Test Solutions product was placed with an image of Pico Technology's PicoScope 4425A with an incorrect caption. The images should not have been placed together and should have been separately captioned with each product's name. We apologize for the error.

PTEN EDITORIAL ADVISORY BOARD

TECHNICIANS

ERIC MOORE,
DeMary Trucks, Columbus, OH
LOU FORT,
K.A.R.S. Inc., Huntingburg, IN

SHOP OWNERS

KIM AUERNHEIMER,
Cool Springs Automotive, Brentwood, TN
TANNER BRANDT,
Autodiag Clinic, Welford, SC
PHIL FOURNIER,
Phil's Auto Clinic, Hemet, CA
JD GOAD,
Goad's Body Shop, Lexington, VA
EDWIN HAZZARD,
Southeast Mobile Tech, Goose Creek, SC
PETE RUDLOFF,
Pete's Garage Inc., Newark, DE
MICHELLE TANSEY,
Dubclinic, Santa Clara, CA

EQUIPMENT MANUFACTURERS

KIMBERLY COTTLE
Associated Equipment
JIM O'HARA,
Clare Automotive



FACEBOOK
[facebook.com/
ptenmagazine](https://facebook.com/ptenmagazine)



LINKEDIN
[linkedin.com/company/
professional-equipment-tool-news](https://linkedin.com/company/professional-equipment-tool-news)



INSTAGRAM
[@ptenmagazine](https://instagram.com/ptenmagazine)



YOUTUBE
PTEN (Professional Tool
& Equipment News)

Austin Matney,
2022 Best Young
Tech Award winner

INTRODUCING
THE

BEST

★ YOUNG TECH ★

AWARD

20 X 23

Honoring technicians aged 35 and younger who are moving the service repair industry forward, who excel in their current roles and are passionate about their work.

DEADLINE TO ENTER: **JUNE 2, 2023**

Prizes

- ✘ Trip to 2023 AAPEX/SEMA Show in Las Vegas
- ✘ Trip for two to the STX Supplier and Training Expo in Nashville in April 2024
- ✘ Tools & Equipment from contest sponsors
- ✘ Award plaque and uniform patch

Qualifications

- ✘ Techs aged 35 or younger
(Must be born after January 1, 1988)
- ✘ At least 2 years experience in the industry
- ✘ Shown career development, innovation in their role, technical or educational achievement, community service and importance to the shop
- ✘ Techs can be nominated or nominate themselves



VISIT vehicleservicepros.com/2023bestyoungtech
FOR MORE INFO OR TO SUBMIT YOUR NOMINATION TODAY!

BROUGHT TO YOU BY:



VEHICLE
SERVICE
PROS

MOTOR AGE

PTEN

RATCHET
& WRENCH

MTE

NOLN

Auto Service
Professional

FEATURED NEW PRODUCTS



LARGE LCD SCREEN

The **Olsa Tools Digital Caliper Measuring Tool**, No. 1589, features a large LCD screen to easily read measurements quickly and accurately. By the use of one button, users can easily switch between three measuring units: millimeters, inches, and fractional inches. Its high-resolution, internal digital sensor provides precise measurements down to +/-0.01mm. Made from hardened stainless steel, the tool offers precision-ground jaws for ideal parallelism and an all-metal construction for strength and durability. It also features a depth gauge, step gauge, zero button, thumbwheel, locking screw, and measuring jaws for inside measurements.

Circle 5 on card or click "PTEN e-inquiry" on VehicleServicePros.com

HOLDS BITS FIRMLY IN PLACE

The **Bit Buddy** from **Ernst Manufacturing** measures 8" in length and fits up to 30 bits. With rare-earth magnetics, the Bit Buddy holds strong whether on the side of a toolbox or upside down. Its taper lock system keeps bits firmly in place and releases them easily when needed. The bit organizer also has a specifically designed hole that fits one 3/8" drive chuck and offers three configuration options for long and short bits. Available in black/red and Hi-Viz/black color combinations.

Circle 6 on card or click "PTEN e-inquiry" on VehicleServicePros.com



SOLID TEXTURED AND CONTOURED HANDLE

The **ARES Tool 32 oz. Slim Line Deadblow Hammer**, No. 23052, features a slim-profile head design for greater precision and easier work in tight and obstructed spaces. The hammer's shot filled canister in the head maximizes driving force while reducing rebound and vibration for less strain on the hand and wrist when hammering. Featuring one-piece polyurethane construction for durability, even in high-impact applications, the hammer also offers a solid textured and contoured handle to reduce the risk of slipping in the hand while providing a comfortable, sturdy grip and control. The long head of this 32 oz. hammer is also ideal for driving pistons into place with ease in addition to other unique applications. Made in the U.S.A. Also available in 8 oz., 18 oz., and 26 oz.

Circle 7 on card or click "PTEN e-inquiry" on VehicleServicePros.com



FOR MORE INFORMATION ON THESE PRODUCTS, CLICK ON "PTEN E-INQUIRY" at VehicleServicePros.com OR CIRCLE THE NUMBER ON THE CARD.

Kicking off the New Products section each month, our Featured New Products page includes brand new products showcased on the cover that are available to the automotive market.



DOESN'T DEFORM OR RESIZE TARGET IMAGES

The **TEXA RCCS3 Digital Target Representation 75" 4K Monitor** does not deform or resize the target images to provide ADAS calibrations that meet OEM specifications. Continuous TEXA IDC5 software updates easily provide new digital vehicle coverage targets to clear considerable space in the workshop from multiple physical targets. Simplify operator calibration workflow with the latest laser measurement digital positioning system. A single operator can easily center and square the calibration frame to the vehicle using the laser measure system in combination with the latest IDC5 guided positioning software to quickly perform micro adjustments with precision.

Circle 8 on card or click "PTEN e-inquiry" on VehicleServicePros.com

SPONSORED BY TEXA



QUICKLY REMOVES STUCK FUEL INJECTORS

The **ProMAXX Ford Power Stroke 6.7L Fuel Injector Seat Restorer Service ProKit - Robby** enables technicians to quickly remove stuck fuel injectors and easily refurbish the fuel injector seat in the 6.7L cylinder head. The Robby tool restores the seat's seal in approximately 15 seconds, maintaining cylinder head compression and engine performance. The ProKit is designed to remove carbon deposits and restores the seat to factory new. It includes the company's PowerPull 6.7L Fuel Injector Removal Kit, which pops stuck fuel injectors quickly by not bolting/unbolting from the cylinder head. Engineered and American made.

Circle 9 on card or click "PTEN e-inquiry" on VehicleServicePros.com



REPAIRS WHEEL STUDS SAFELY AND CHIP-FREE

The **GEDORE Thread Reset Tool**, No. 3435644, is designed to repair wheel studs safely and chip free. The tool can be used universally on wheel bolts with M12 x 1.5 and M14 x 1.5. According to the company, repairs are done in just 30 seconds and will not weaken the thread. The thread becomes chipless by rolling (forming, pressing, embossing) back to its original geometry. No material is removed and the strength of the wheel bolts are fully retained. Use with a standard hex socket with reversible ratchet.

Circle 12 on card or click "PTEN e-inquiry" on VehicleServicePros.com



CHARGES 6V, 8V, OR 12V BATTERIES

The **Snap-on Bench Top Battery Charger Plus**, No. EEBC30A12V, can charge 6V, 8V, or 12V AGM, standard lead acid, and LiFeP04 vehicle batteries. The EEBC30A12V features a rugged, compact design with a unit wrap-around storage for its power cord and charging cables as well as bristles to secure the clamps in place. Performing a multi-stage charge cycle, the unit offers a charge rate of 2A, 15A, or 30A (2A or 10A for LiFeP04) and a stable power mode that maintains vehicle battery voltage during repairs and offsets battery drawdown while the engine is off. Included with the unit are long reach 82" copper-aluminum blend 8-gauge multi-temperature flex cables with 300A steel clamps and an AC power cord.

Circle 10 on card or click "PTEN e-inquiry" on VehicleServicePros.com



FEATURES A REMOVABLE TANK FOR TRANSPORT

The **Carlyle Tools ACM Series** is designed to efficiently recover, recycle, and recharge automotive A/C systems. The A/C machines are compatible with both electric and traditional engine-driven compressors. Built with a welded steel frame, the units' heavy duty construction is made to last. They also feature patented motor-controlled ball valves, a patented oilless compressor, and have a removable tank for transport. Available in three models.

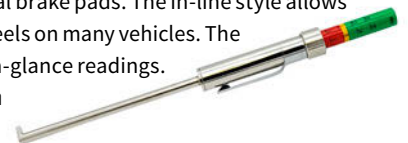
Circle 13 on card or click "PTEN e-inquiry" on VehicleServicePros.com



MEASURES INTERNAL AND EXTERNAL BRAKE PADS

The **Tool Aid In-Line Brake Pad Gauge**, No. 65300, is calibrated for standard 6mm backing plates and measures both internal and external brake pads. The in-line style allows readings to be taken without removing the wheels on many vehicles. The metric, color-coded scale allows for quick, at-a-glance readings.

Circle 14 on card or click "PTEN e-inquiry" on VehicleServicePros.com



SLOW TARGET SCAN MODE

The **Mastercool Black Series Infrared Refrigerant Leak Detector**, No. 55600, uses an infrared sensor to effectively identify halogenated gases. The ergonomic design and rugged construction provides refrigerant leak detection all while allowing the technician to easily adjust sensitivity to adapt to different environments. The unit detects the refrigerant by scanning the area in a slow target scan mode. Moving the sensor back and forth until the alarm sounds; the IR sensor zeroes out when held over a leak. The leak detector provides the same trigger conditions for all refrigerants, and features an auto-off function. Kit includes charging cable and replacement filters.

Circle 11 on card or click "PTEN e-inquiry" on VehicleServicePros.com



NEW PRODUCTS



FEATURES A CUTTING CAPACITY OF 7/8" CLEAN CUT

The **Forney Industries 45 P PRO Plasma Cutter** features a cutting capacity of 7/8" clean cut (1/2" aluminum) and 1-1/8" sever cut. The 25' Forney Ignite Plasma Torch offers drag torch technology that supports all skill levels. The integrated air pressure and water separator provide additional protection to the machine while maximizing consumable life. This plasma cutter is dual-voltage and runs off 120V or 240V (adapter included). The Forney 45 P PRO Plasma Cutter is generator friendly (8 KW of continuous power for 240V) and comes with a three-year power source warranty.

Circle 15 on card or click "PTEN e-inquiry" on VehicleServicePros.com

ADJUSTS UP TO 75.5"

The **NextLED Dual Color/Power Tripod Work Light**, No. NT-6926M, is equipped with an 8,000 mAh built-in Li-ion battery and features a remote control which allows users to control the brightness of the light up to 100'. The NT-6926M offers adjustable color temperature and illuminations settings. Users can easily switch between color temperatures (4,000k warming light and 6,500k bright light) and brightness levels (6,000 lm, 2,000 lm, and 500 lm) to fit different applications. The lamp head can be detached and mounted to wherever needed thanks to its magnet and hook design. The heavy duty tripod light stand adjusts up to 75.5" and the multi-directional LED heads rotate 360 degrees and pivot 90 degrees.

Circle 16 on card or click "PTEN e-inquiry" on VehicleServicePros.com



LONG LASTING AND DURABLE ADHESIVE





The **Dent Fix Equipment Cold Adhesive Glue Slide Hammer Set**, No. DF-CGS71, is a lightweight kit designed to enable auto body professionals to quickly and safely move large areas of metal efficiently. The kit includes the company's 2.8 lb Slide Hammer, 50 grams of Mammoth Tar Cold Glue, and four tabs. Each tab is aluminum for strength and durability. Tab sizes include: 38mm and 52mm round tabs and 22mm by 57mm and 36mm by 80mm rectangular tabs. The Mammoth Tar Cold Glue provides almost instantaneous, strong adhesion and will not harm the finish of the vehicle, the company says.

Circle 17 on card or click "PTEN e-inquiry" on VehicleServicePros.com



ARCTIC COMMANDER

RECOVERY / RECYCLE / RECHARGE MACHINES

-  8" COLOR TOUCH SCREEN to navigate all features and functions with ease
-  WIFI CAPABILITY allows for real time, interactive communication and troubleshooting
-  VISUAL INDICATOR LIGHT provides visual confirmation of machine progress
-  4" ANALOG GAUGES are class 1 rated and color coded

KEEPING THE BUSY TECHNICIAN IN MIND...

COMMANDER4000 R1234YF & HYBRID RECOVERY/RECYCLE/RECHARGE MACHINE

- Refrigerant identifier
- Hose flushing
- Thermal printer
- One used oil bottle
- Status light
- Refrigerant database
- SAE J2843 certified
- Made in USA



COMMANDER2000 R134A FULLY AUTOMATIC RECOVERY/RECYCLE/RECHARGE MACHINE

- Automatic oil injection
- Two sealed bellows design bottles, one used oil bottle
- Status light
- Refrigerant database
- SAE J2788 certified
- Made in USA



WWW.MASTERCOOL.COM

PHONE: 973-252-9119 • FAX: 973-252-2455

Circle 18 on card or click "PTEN e-inquiry" on VehicleServicePros.com



REMOVES STANDARD AND DAMAGED LUG NUTS

The **Lisle Corporation 7-pc Flip Socket Set**, No. 12950, offers two hex sizes in each socket for the removal of standard and damaged lug nuts found on many vehicles. The 6-point impact sockets are made from chrome moly steel and have a black oxide finish. The set includes a 1/2" drive extension, 17mm/17.5mm, 19mm/19.5mm, 21mm/21.5mm, 22mm/22.5mm, 27mm/27.5mm, and a deep thin-walled 19mm/21mm socket. The 19mm/21mm socket includes a plastic sleeve that prevents scratching the wheels. The set comes in a blow molded case for storage.

Circle 19 on card or click "PTEN e-inquiry" on VehicleServicePros.com



SELF-GRIPPING JAW DESIGN

The **Matco Tools 3-pc Cobra Pliers Set**, No. PC3SG, now available in green, offers a gripping surface that has special hardened teeth and is wear resistant and grips any shaped object — round, square, hex, or flat. Self-gripping jaw design and self-locking ability prevents slipping off the workpiece. The pliers open wide with an easy push button. Adjust once and it stays while fine-adjustment provides optimum opening for different size workpieces. The pliers also feature a guard to prevent finger and hand pinching as well as a thin head to fit into tight spaces.

Circle 20 on card or click "PTEN e-inquiry" on VehicleServicePros.com

FEATURES A 3-1/2" LCD SCREEN

The **Mac Tools Advanced Code Reader**, No. ET1400, features a 3-1/2" LCD screen, allowing users to analyze real-time graph data in the palm of their hand. It offers access to 10 OBD-II modes functionality, supports DTC lookup, records and playbacks data, and prints data via PC. The ET1400 provides vehicle coverage of up to 33 domestic, Asian, and European makes and models. Additionally, it has interface language options for English, Spanish, and French, and reads and erases codes as well as views live data of ABS, SRS, and automatic transmission systems.

Circle 21 on card or click "PTEN e-inquiry" on VehicleServicePros.com



ONE POWERFUL COMBO KIT!

FUEL INJECTOR SERVICE KIT



FORD 6.7L POWER STROKE

ENGINEERED TO REMOVE THE FUEL INJECTOR & MAINTAIN ENGINE PERFORMANCE

PMXRBY300PROP

ROBBY FUEL INJECTOR SEAT RESTORER

RENEWES FUEL INJECTOR SEAT SEAL IN 15 SECONDS OR LESS
RESTORES ENGINE PERFORMANCE
MAINTAINS CYLINDER HEAD PRESSURE



SLIDE HAMMER & LIFT KIT INCLUDED

ELIMINATE BOLTING / UNBOLTING TO THE HEAD FOR FASTER EXTRACTION
MORE THAN 100 PSI PULLING FORCE

PMXPWP100PRO



TECHNICAL SUPPORT
(724) 941-0941



QUALITY | PRECISION | PRODUCTIVITY

POWERTECH "ALPHA"

PMXPWT200PRO

EXHAUST MANIFOLD REPAIR COMBO KIT

ONE KIT
15 ENGINES

FORD: 4.2L V6, 4.6/5.4L V8, AND 6.8L V10
DODGE: 5.7L AND 6.1L HEMI
GM LS: 4.8L, 5.3L, 5.7L, 6.0L, 6.2L V8



ROCKY



EXHAUST MANIFOLD REPAIR KIT

FORD 4.6L/5.4L V8, 6.8L V10 - TRITON

FIX BROKEN BOLTS FAST!

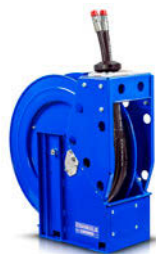
PMXR200PRO



SCAN ME

Circle 22 on card or click "PTEN e-inquiry" on VehicleServicePros.com

NEW PRODUCTS



RATED TO 2,500 PSI

The **Coxreels Extreme Duty XTM Dual Hydraulic Reel**, No. XTM-DMP-450, is ideal for any application where dual hydraulic lines are required such as remote hydraulic equipment or accessories, including rescue tools, motors, saws, and more. Coxreels' single-sided, dual-bodied hydraulic swivel is featured on this reel allowing for the inlet connections to both be on the same side of the reel. The hose included on the with-hose models is a twin-line fully bonded hose for smooth performance and handling. The Extreme Duty XTM Reel is rated to 2,500 psi and U.S.A. made.

Circle 23 on card or click "PTEN e-inquiry" on VehicleServicePros.com



STAMPED SOCKET SIZES

The **Milwaukee Tool 47-pc 1/2" Drive Ratchet and Socket Set with PACKOUT Low-Profile Organizer**, No. 48-22-9487, features a 90-tooth ratchet that has 4 degrees of arc swing and a slim profile for working in tighter spaces. It also has a flush directional lever. The sockets have four flat sides to prevent rolling and sizes are stamped into each socket for easy-to-read visibility. The organizer offers a clear top for easy identification of contents, is IP65 rated, and is built from impact-resistant materials for durability on and off the jobsite.

Circle 24 on card or click "PTEN e-inquiry" on VehicleServicePros.com



OFFERS 225A ENGINE START ASSISTANCE

The **PRO-LOGIX 12V 40/15/5/225A Wheel Charger with PS Mode and Engine Start**, No. PL3740, from **Clore Automotive** is designed to deliver versatile service to today's busy shops, from battery charging and engine starting to power supply support for a variety of applications. With charge rates to 40A, the unit makes quick work of charging and it has a charge setting for flooded and AGM/spiral wound batteries. The PL3740 features a knob control for easy operation, 225A engine start assistance, temperature compensation, a multi-phase charging process, and a PS mode for diagnosis, repair, maintenance, and ADAS support. It also offers both an auto charge mode and traditional timed (manual-style) charge settings, including 20,40,60,90, and 120 minutes.

Circle 25 on card or click "PTEN e-inquiry" on VehicleServicePros.com



HAS A FOUR-PRONG FORK DESIGN

The **CTA Manufacturing Ford Fuel Injector Connector Disconnect Tool**, No. 6515, features a spring-loaded mechanism that allows for easy removal of a connector. The tool services 6.4L power stroke injectors for 2008+ 6.4L F-250, F-350, F-450, and F-550 applications. Its four-prong fork design maximizes the surface area on the injector and connector to limit damage.

Circle 27 on card or click "PTEN e-inquiry" on VehicleServicePros.com

GET IT DONE WITH GREEN[®]

SHOP THE FORNEY[®] 220 AC/DC TIG AT FORNEYIND.COM OR A DEALER NEAR YOU

Forney
WELDING AND METALWORKING
FORT COLLINS, COLORADO

f @ d v in p t

Circle 26 on card or click "PTEN e-inquiry" on VehicleServicePros.com

REV UP YOUR SAVINGS!



ALL-IN-1 SHOPPING



Call Now for a **FREE** catalog!

1-800-261-7729

Ask about our price promise guarantee.

WRENCHERS.com

© 2023 Wrenchers LLC. All Rights Reserved.

Circle 28 on card or click "PTEN e-inquiry" on VehicleServicePros.com



Find out what shop owners and technicians are buying this year.

The Aftermarket Profile

is a comprehensive profile of the automotive aftermarket that provides insights from over 300 *PTEN* readers on tool and equipment purchases they've made recently or plan to make soon. For years, *PTEN* readers have turned to this survey to discover what is trending among their fellow technicians and shop owners and within the industry as a whole. No one else conducts research like this and we sincerely hope it helps you stay up-to-date on new tools you might want to add to your toolbox and equipment to help your shop run as efficiently as possible. We've included some statistics on trending topics such as ADAS and EVs to keep you ahead of what's happening in the industry.

TOP 5 SERVICE OPPORTUNITIES

55% Maintenance services

49% Diagnostic and electrical services

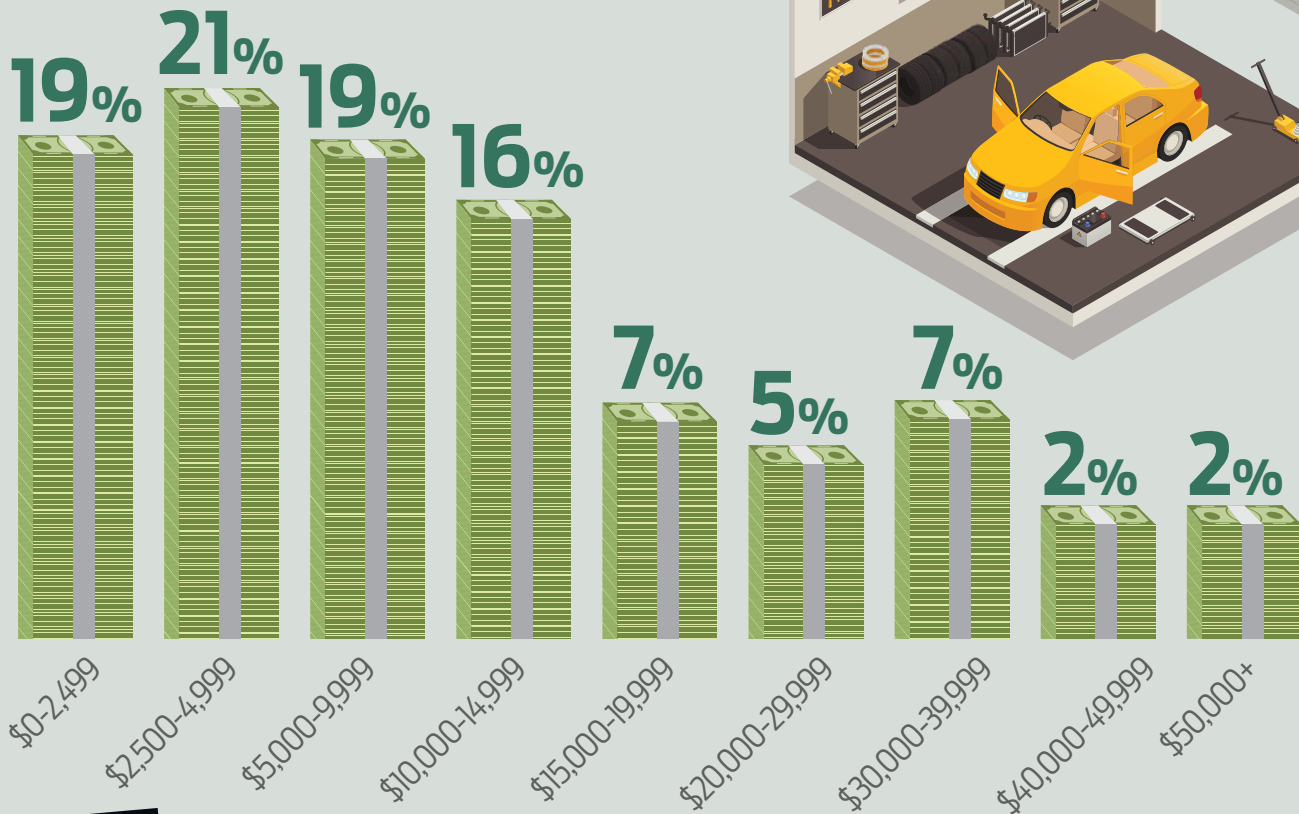
30% A/C

30% Tire/wheel

29% Suspension repair

BUYING TOOLS & EQUIPMENT

HOW MUCH DO SHOPS SPEND ANNUALLY FOR TOOL AND EQUIPMENT PURCHASES?
(Not including individual tech purchases)



85%

of shop owners and technicians have purchased tools based on what they've seen in *PTEN* magazine.

DO SHOPS REIMBURSE TECHS FOR TOOL PURCHASES?

12%
Yes, 100%

22%
Yes, Partially

66%
No



2023 BUDGETS FOR TOOLS AND EQUIPMENT

24%
More than 2022

52%
Same as 2022

24%
Less than 2022

BUYING TOOLS & EQUIPMENT

WHERE TOOLS/EQUIPMENT ARE BEING PURCHASED

84%

Mobile tool distributor
(Cornwell, Mac, Matco, Snap-on, independent)

75%

Online
(Amazon, eBay, ToolTopia, etc.)

69%

Auto parts store
(Carquest, NAPA, etc.)

50%

Retail store
(Ace Hardware, Harbor Freight, etc.)

30%

Bought used/
secondhand

5%

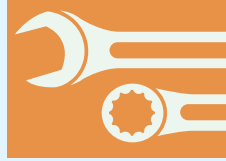
Other



TOP TOOL PURCHASE CONSIDERATIONS

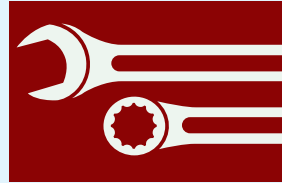
70%

Price



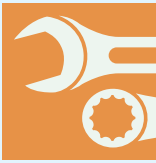
86%

Quality

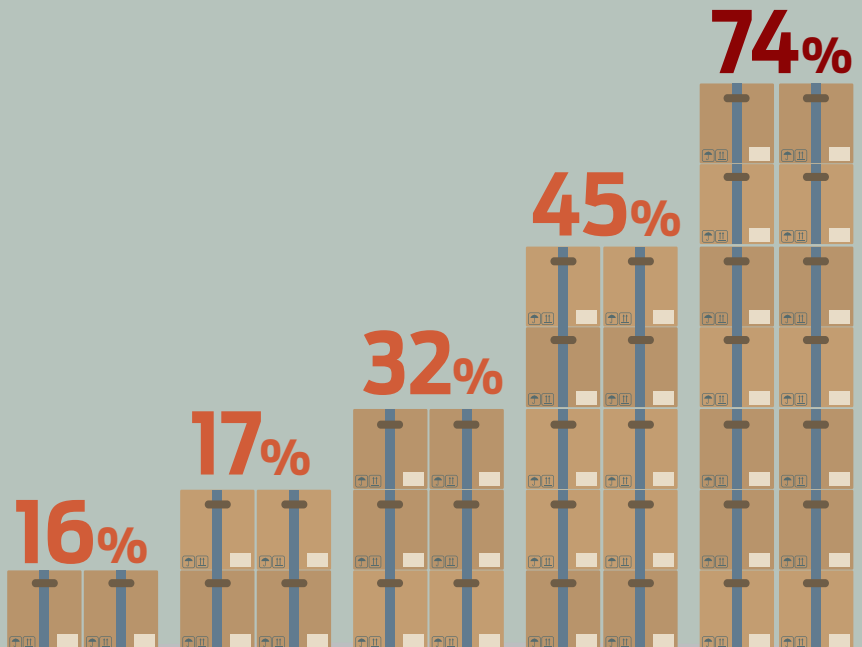


52%

Availability



MOBILE TOOL DISTRIBUTOR(S) TECHS ARE BUYING FROM



Independents



CORNWELL
QUALITY TOOLS



MATCO
TOOLS

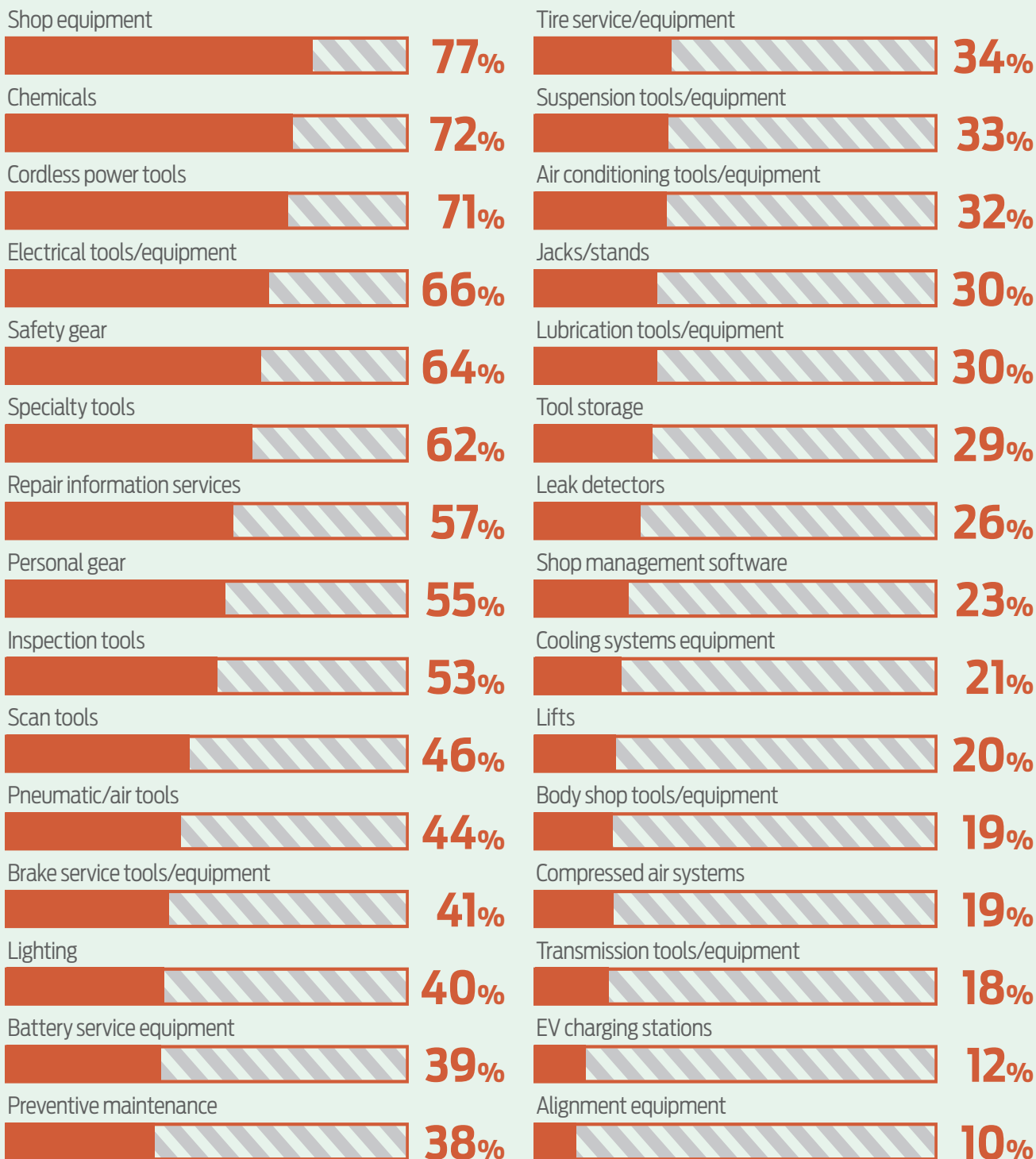


BUYING TOOLS & EQUIPMENT

PERCENTAGE OF TECHS/SHOP OWNERS PLANNING THE FOLLOWING PURCHASES IN 2023

Hand tools

81%



BUYING TOOLS & EQUIPMENT

AUTO PARTS STORE(S)
TECHS ARE BUYING TOOLS FROM

62%



41%



37%



31%



19%



8%



5%



52%

either always or often consider whether a product is made in the U.S.A.



TYPES OF MEDIA THAT CONTRIBUTE TO SHOP OWNERS/TECHS PURCHASING DECISIONS

Print magazines



Publication websites



Videos



Webinars/podcasts



Events



eNewsletters



Social media



Email marketing



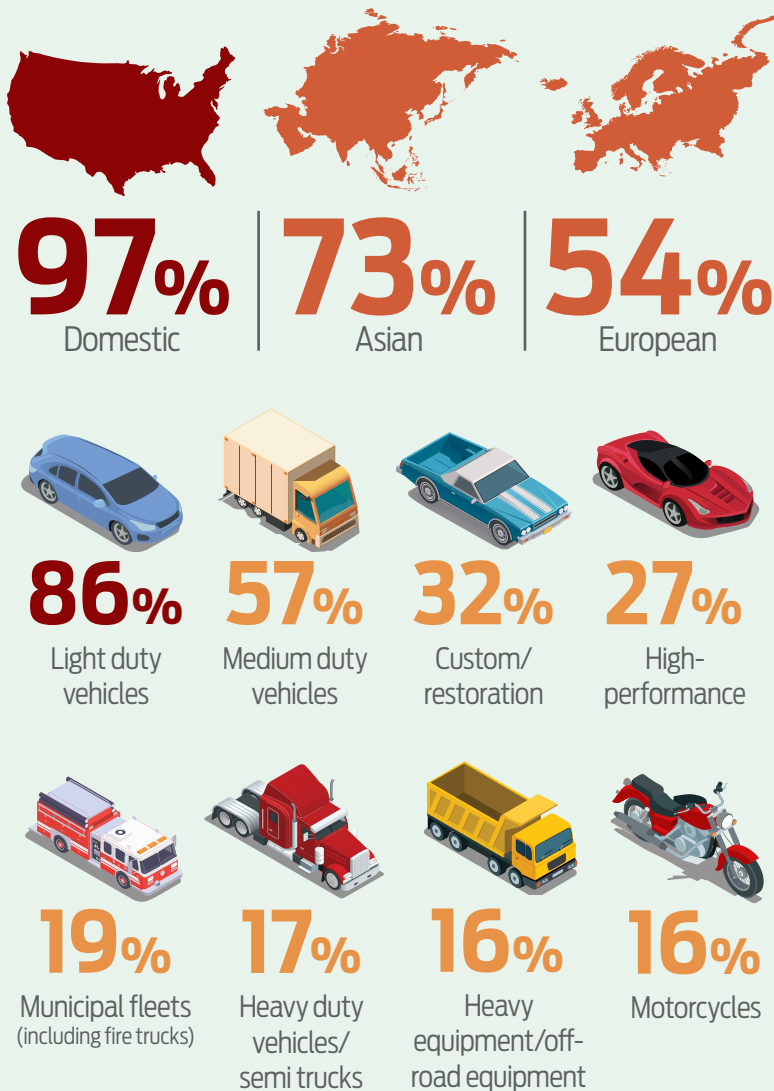
166960528, 113065280 | Dreamstime

MAINTENANCE & REPAIR

REPAIRS AND SERVICES PERFORMED

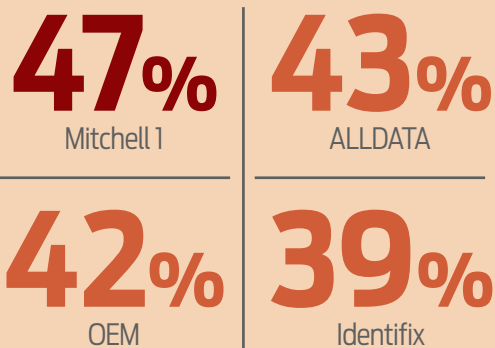
Brake.....	85%
Electrical and diagnostics	85%
Engine performance.....	75%
HVAC and Engine repair (underhood)	74%
Alignment, steering, suspension, exhaust.....	62%
Tire and wheel	61%
Tire sales	46%
Welding.....	46%
ECU programming and coding.....	45%
Fleet maintenance services/ truck and trailer repair	41%
Hybrid & EV service.....	27%
Bodywork	19%
Other.....	13%
ADAS calibration.....	8%

WHAT TYPES OF VEHICLES ARE SHOPS WORKING ON?

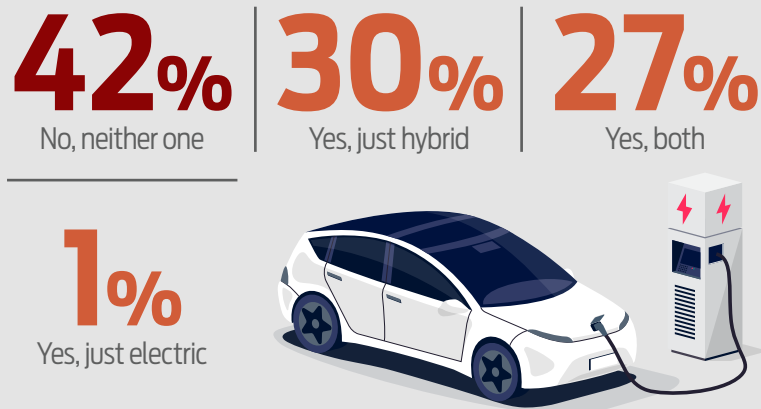


SERVICE INFORMATION

SOURCES USED IN SHOPS

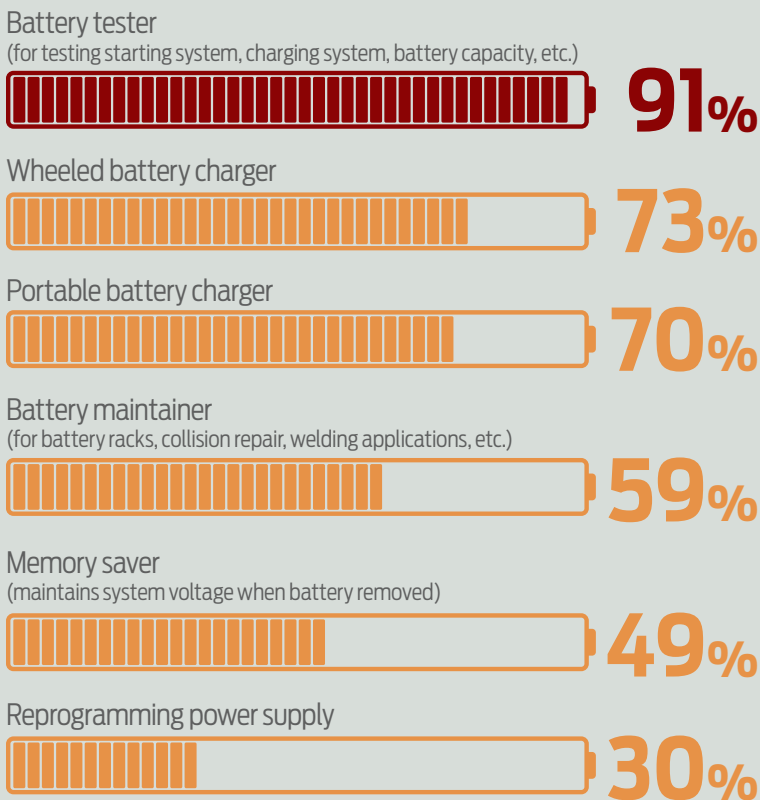


HYBRID AND ELECTRIC VEHICLES

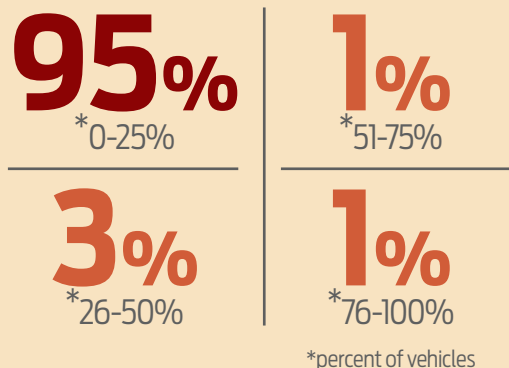


BATTERY SERVICE

BATTERY SERVICE EQUIPMENT SHOPS OWN



PERCENTAGE OF VEHICLES IN THE SHOP THAT HAVE A LITHIUM BATTERY?

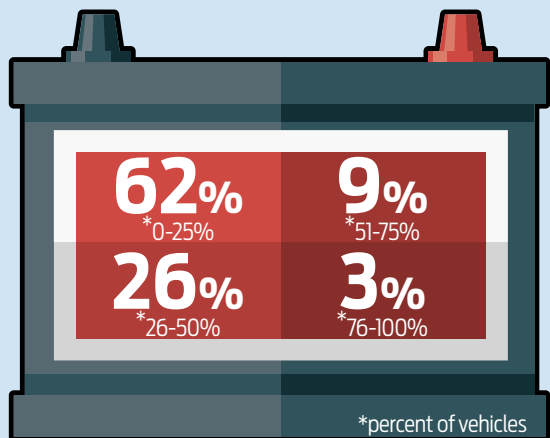


59% Of shops have a smart battery charger

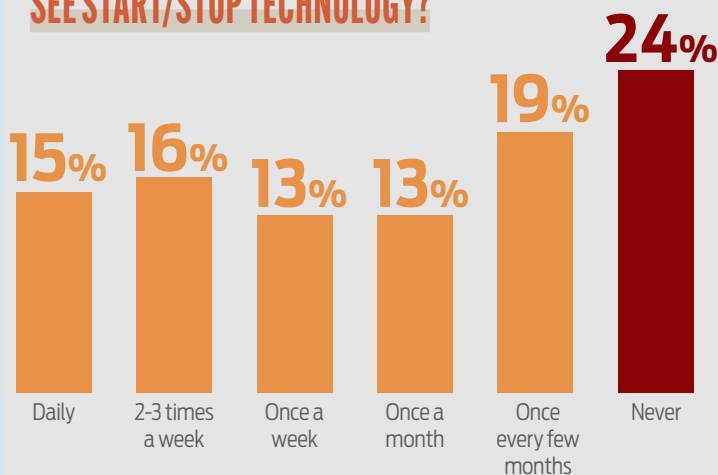
34% Do not have a smart charger

7% Plan on purchasing a smart battery charger in the next 12 months

PERCENTAGE OF VEHICLES IN THE SHOP THAT HAVE AN AGM BATTERY



HOW OFTEN DO TECHS SEE START/STOP TECHNOLOGY?



DIAGNOSTICS

LEADING OEM SCAN TOOLS FOR DIAGNOSTIC INFORMATION USED IN SHOPS

64%



63%



53%



43%



43%



SHOPS OFFERING ADAS SERVICES

82%

No, we currently outsource ADAS services.

11%

Yes, we plan to offer ADAS in the next year.

7%

Yes, we currently offer ADAS services.

WHY SHOPS AREN'T OFFERING ADAS SERVICES

The size and layout of my shop is not conducive to target setup.....	50%
Not a profitable opportunity at this time.....	34%
Concerns about setup cost.....	28%
Concerns about training and maintenance.....	21%
Need more information on the market for ADAS service.....	21%
Other local businesses already offer this service.....	21%
Other.....	8%

SCAN TOOLS/SUBSCRIPTIONS TECHS RELY ON IN THE SHOP

72%

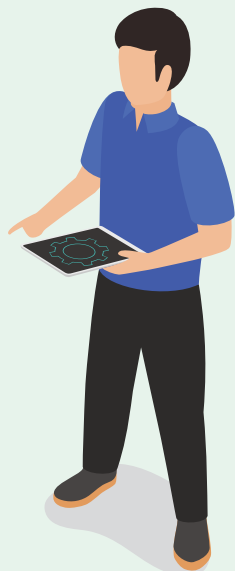
Aftermarket scan tools

30%

OEM specific scan tools

24%

OEM limited-time subscription access



ARE SCAN TOOLS A SHOP PURCHASE OR A TECHNICIAN PURCHASE?

69%

Shop purchase

24%

We have shop scan tools, but I also purchase my own

7%

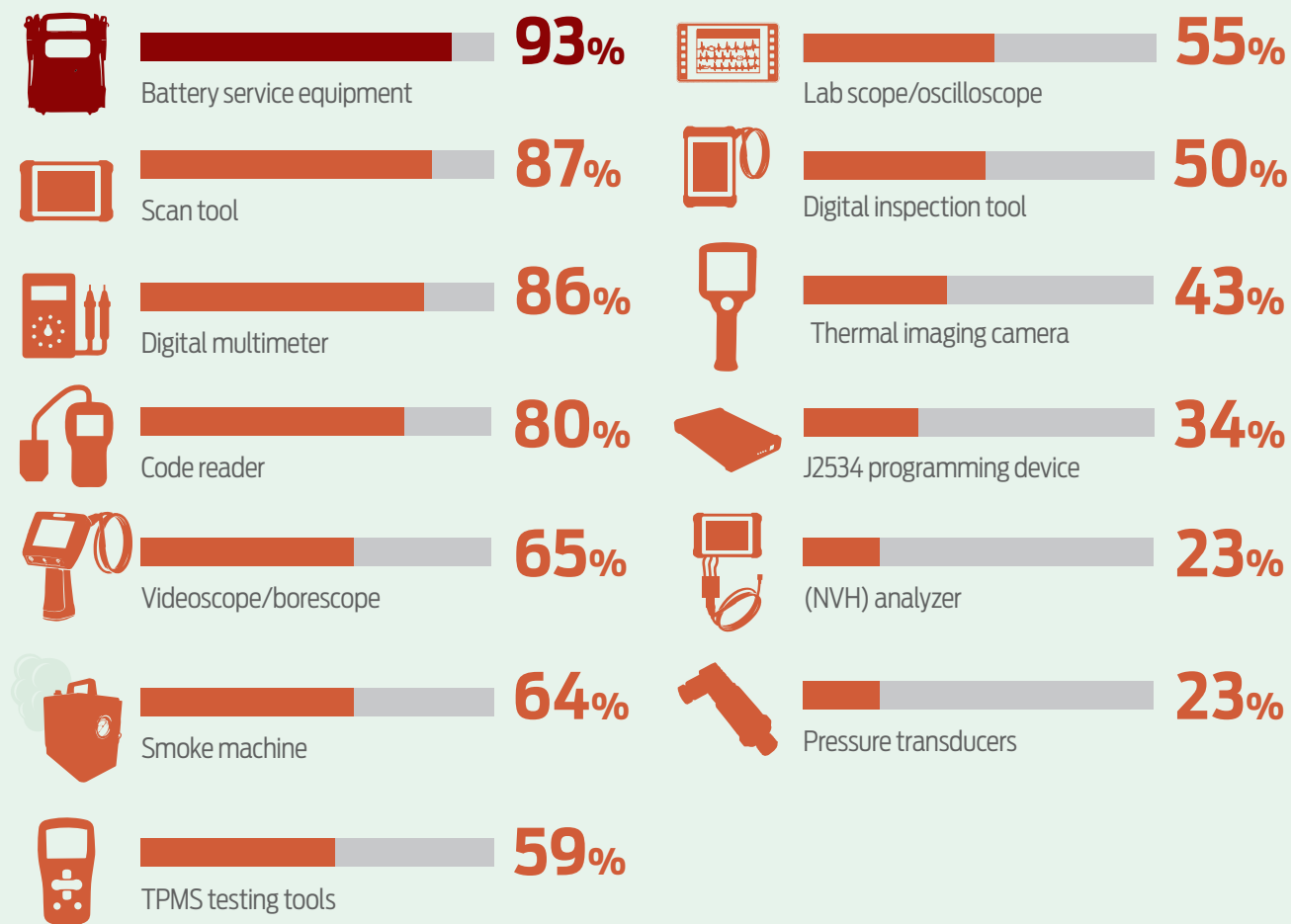
Technician purchase



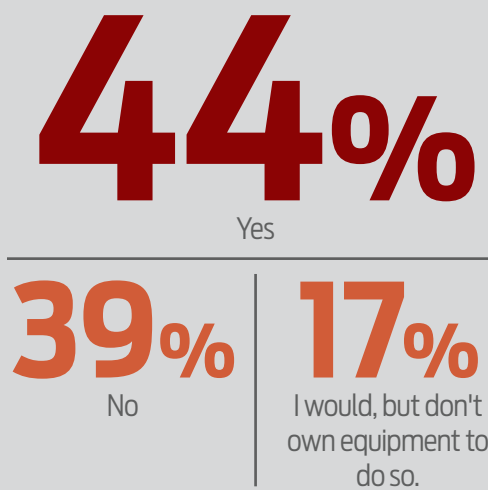
1201149783 | Getty Images

DIAGNOSTICS

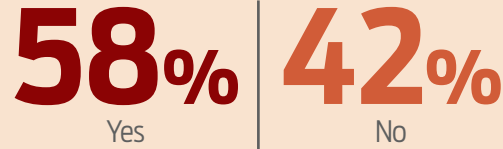
DIAGNOSTIC EQUIPMENT THAT SHOP OWNERS/TECHS OWN



DO SHOPS OFFER REFLASHING OR REPROGRAMMING?



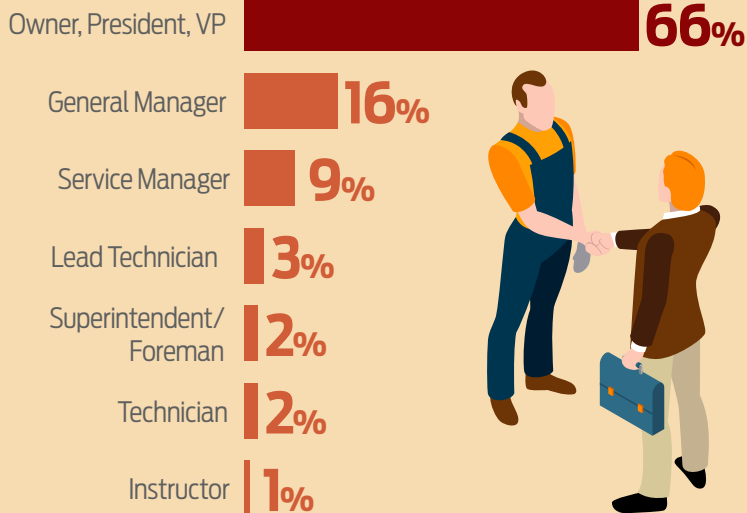
PERCENTAGE OF TECHS WHO'VE USED A TOOL THAT REQUIRES A SMART DEVICE



56% of shop owners and technicians said they would remotely access a customer's vehicle data if they had a telematics tool or device.

INSIDE THE SHOP

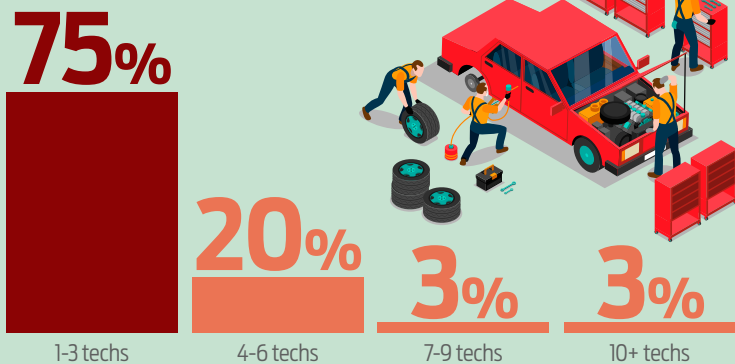
SURVEY RESPONDENT JOB TITLES



PRIMARY AREA OF BUSINESS?



NUMBER OF TECHNICIANS IN THE SHOP?



General repair shop (auto, service repair)	60%
Specialty repair shop (exhaust, transmission, performance, etc.)	9%
Collision repair/body shop	8%
Fleet	7%
Heavy duty trucking and/or equipment	6%
Import specialist	4%
New car or truck dealership service center	3%
Gas/service station with repair bays	1%
Lube service	1%
Training facility	1%
Franchise chain (Midas, Pep Boys, etc.)	0.3%

46%

Almost half of shop owners anticipate higher overall revenue in 2023.



NUMBER OF BAYS IN THE SHOP?

46%

4-9 bays

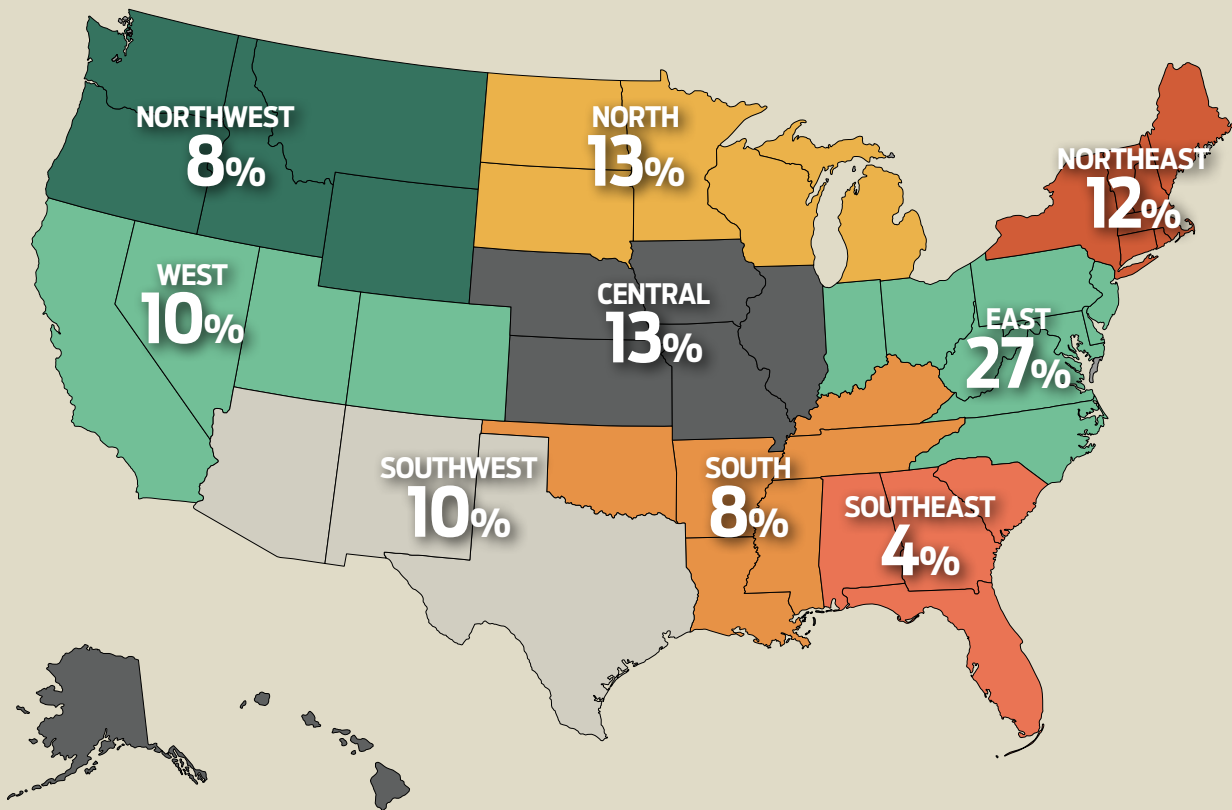
37% | 13%

1-3 bays

10+ bays

4% Not applicable

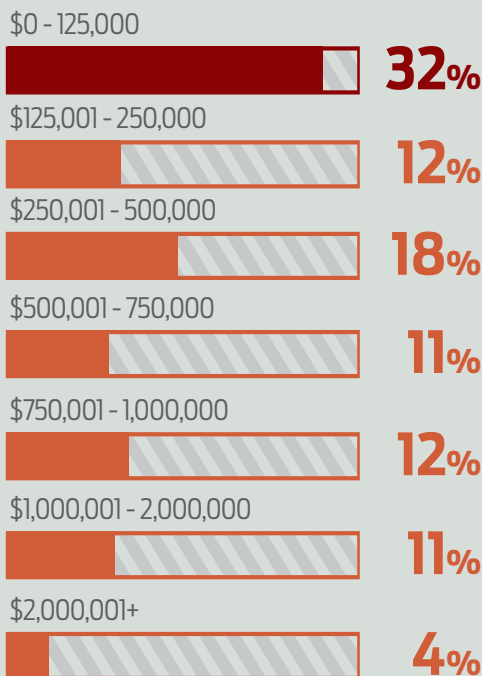
LOCATIONS OF SURVEY RESPONDENTS



SHOP MANAGEMENT INVESTMENTS FOR 2023



ANNUAL SHOP REVENUE?

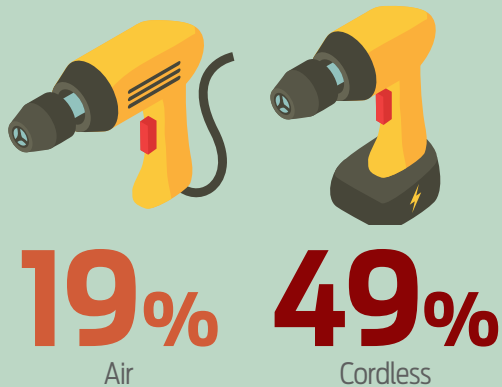


NUMBER OF SHOPS UNDER THE SAME OWNER?



POWER TOOLS & A/C EQUIPMENT

WHICH DO TECHS PREFER, AIR TOOLS OR CORDLESS TOOLS?



*33% - No preference

PERCENTAGE OF TECHS WHO HAVE REPLACED AIR TOOL USAGE WITH CORDLESS TOOLS

72%



Yes, I have replaced some of my air tools with cordless tools.

7%



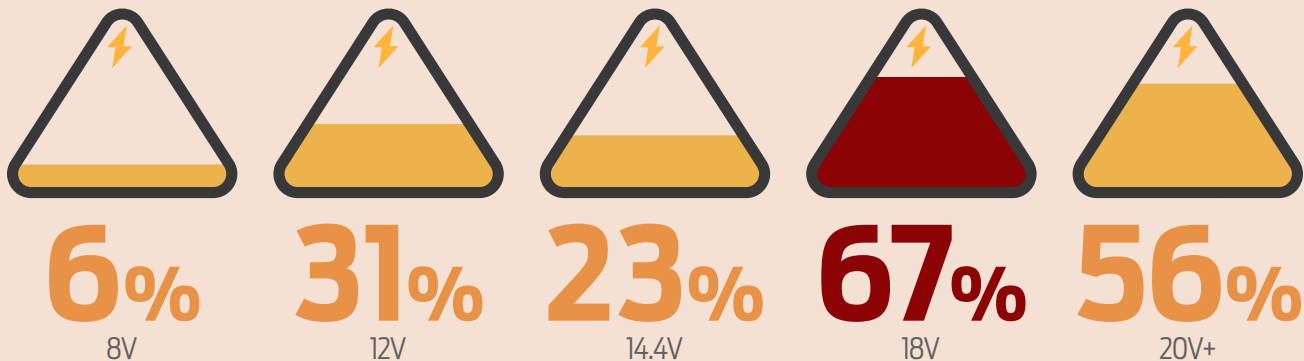
Yes, I have replaced all of my air tools with cordless tools.

21%

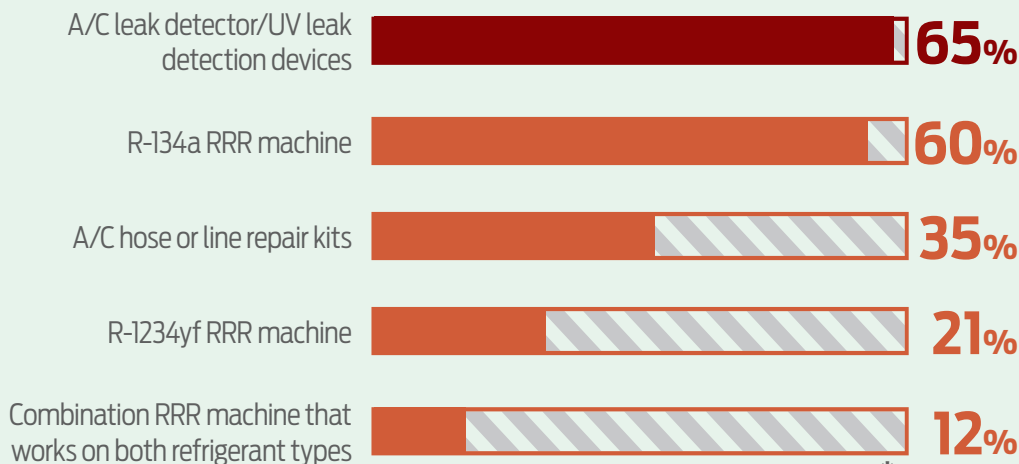


No, I have not replaced my air tools with cordless tools.

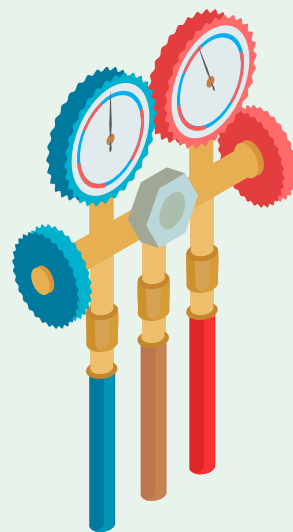
MOST POPULAR POWER TOOL VOLTAGE



A/C EQUIPMENT IN THE SHOP?

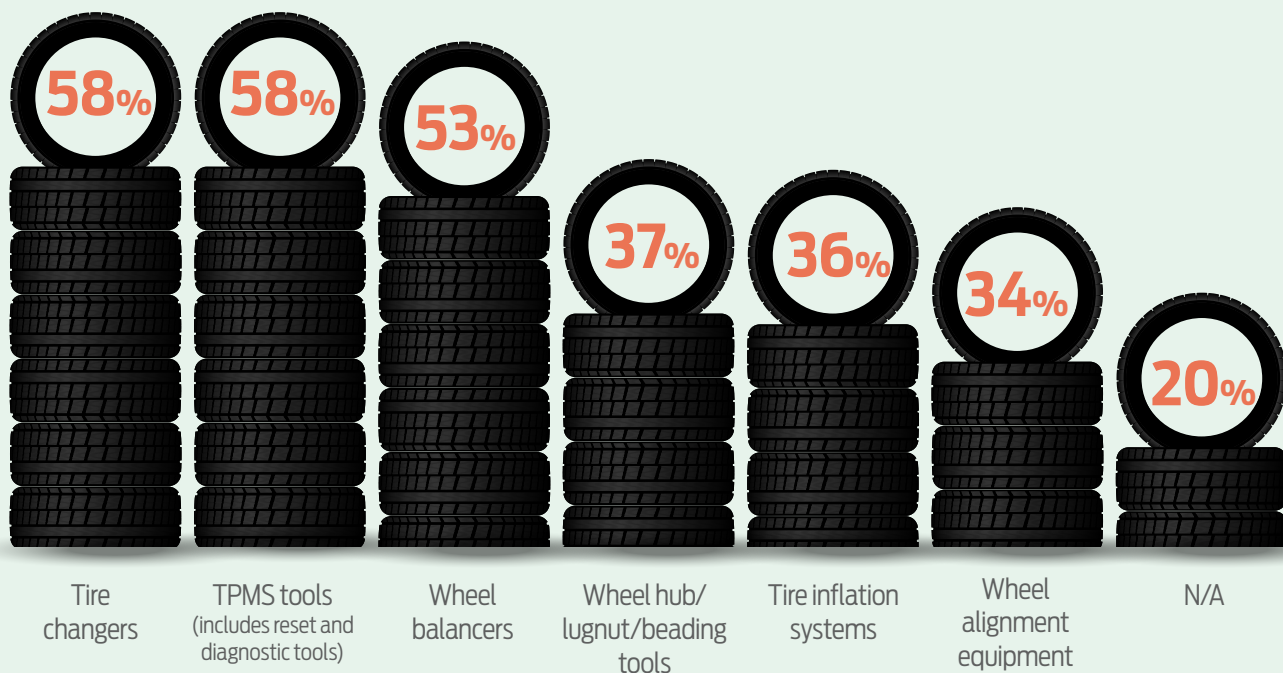


*24% - N/A



TIRE/WHEEL & TRAINING

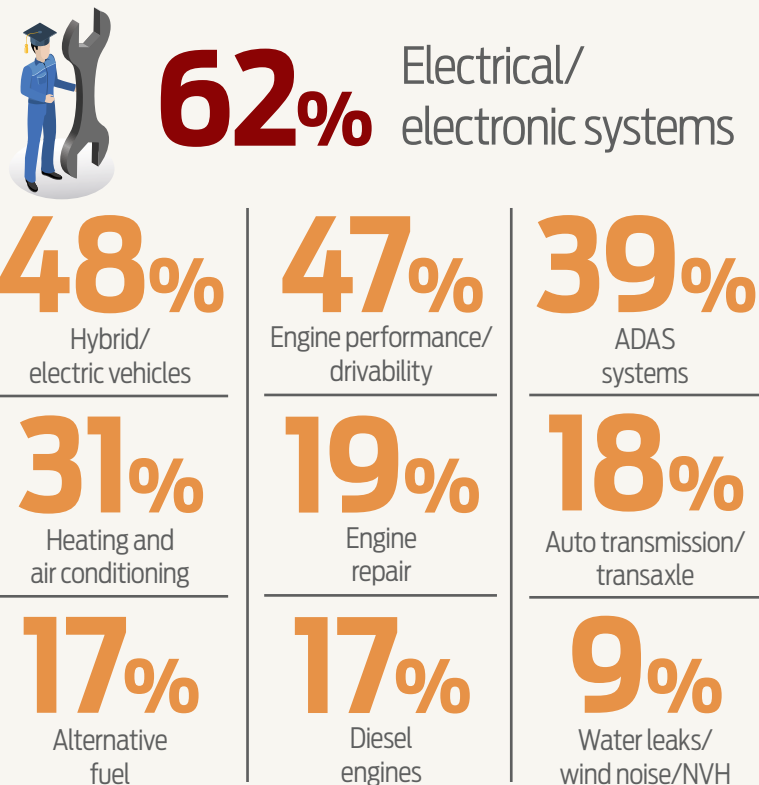
TIRE/WHEEL SERVICE EQUIPMENT THAT SHOPS OWN



RESOURCES USED FOR TRAINING IN THE PAST YEAR



BIGGEST TRAINING OPPORTUNITIES



Ingersoll Rand's 1" Cordless Impact Wrench, No. W9691

Q&A with Sean Fitzgibbons, director of product management at Ingersoll Rand.



Q: What makes this product innovative?

A: First of all, with the power of the tool you are getting 3,000 ft-lbs of breakaway torque for when you're removing a bolt, for example, or removing a fastener. Then it's 2,200 ft-lbs of fastening torque when you're going in that direction. And so, the power of the tool means that you can perform a much broader range of applications than you can with the typical or smaller class of impact wrench.

And what that also means for our users is that before this tool, you mainly would have needed to use a pneumatic tool to perform an application at that type of high-power level, and with this 1" cordless product now you can perform those same applications but with the quick setup time and freedom of movement and maneuverability of a cordless tool.

Q: How will this product improve the lives of technicians and shop owners?


A: One of the things that we hear a lot when we're working with users is that pneumatic tools certainly have their place, however, there are some situations where the hoses that you need to attach to pneumatic tools can become tangled. They can become trip hazards in some situations or if you're working in an area where you need to be maneuvering the tool around, the hose can get tangled or pinched. So, being able to just simply grab a cordless tool, get a grip, and pull the trigger improves your productivity because you're able to perform that application and move around with the tool much more quickly.

When you're running a business that depends on how many services you can do in a day, the faster setup and in some cases the faster actual performance of that application is actually letting you get more jobs done, so that's growing your productivity and that's growing your business as a business owner.

Q: What has been the feedback from technicians who've purchased this tool?

A: One of the things that stands out is the ergonomics of the tool. It has a really unique industrial design where it uses two of the IQV20 batteries on board. That gives it more run-time and more power, but the way that it's designed is that they are placed opposite of each other on either side of the tool, and they are sort of tucked into a space where they're not obtrusive when you use it, so the tool feels really well balanced. The other thing is that it has this sort of classic D-handle design on the back, and then it has an auxiliary handle on the front, where the auxiliary handle can rotate and lock in at any position, 360 degrees. That way you can get your grip position exactly where you want it, and it's just very comfortable to use.

Q: Any other important features?

A: One other thing is that it's made to be durable in the rugged environments. Whether it's in vehicle service applications where you're exposed to grease or it's in industrial settings where you risk dropping the tool on concrete or metal or bumping it into hard surfaces and things like that, the tool has a very robust design. It's also protected against dust and water. It has an IP56 rating, and it comes with a 3-year warranty, so if there are any issues with the tool, Ingersoll Rand will support that and get you back up and running quickly. 

PTEN is the only publication to feature the prestigious "Innovation Awards." Every year since 1999, the Innovation Awards highlight the newest and most innovative products introduced to the automotive aftermarket. For 2022, *PTEN* received 121 submitted product entries in 23 categories. We will be featuring the top scoring products in monthly Innovation Award Profiles. To view a full list of winners online, visit: [VehicleServicePros.com/2022IAWinners](https://www.vehicleservicepros.com/2022IAWinners).



The Innovation Awards honor companies that take their products to another level and offer unique features that make a technician's job easier. The 2023 Innovation Awards are now underway. Stay tuned for the winners to be announced in our August issue!

The QUALITY Battery Chargers Professional Technicians TRUST

ASSOCIATED



6002B

CELEBRATING 75 YEARS

Legendary Power and Quality
Safe in Any Weather



MADE IN USA
OF U.S. & GLOBAL MATERIALS
★★★★★

ECO FRIENDLY
ENERGY EFFICIENT



6006AGM



6009AGM



6012AGM



IBC6008MSK

AMERICAN MADE, FAMILY OWNED SINCE 1948

5043 Farlin Ave. | St. Louis, MO 63115 | 800-949-1472 | www.associatedequip.com

I WANT THE BLUE ONE

Circle 29 on card or click "PTEN e-inquiry" on VehicleServicePros.com

Mayhew Tools 3-pc Hammerless Set, No. 89021

Reviewed by John Baumgardt III, owner/operator of Baumgardt's Auto Repair in Fillmore, Ind.

Q: How did the tool function as far as saving you time?

A: The hammerless set saved time trying to figure out how to get a punch and hammer into a space with limited room.

Q: How has using this tool impacted your shop's profitability?

A: These increase profitability mainly by not having to repair or replace something after accidentally hitting it with a hammer while trying to hit a punch or chisel in a confined area.

Q: What types of jobs/repairs did you use this tool for?

A: I used it to remove a couple roll pins and small bushings from transmission parts. This set includes a roll pin punch, ham-



Q: How does this tool compare to other tools you've used like it?

A: I've used the old hammer and punch method, and also automatic center punches. There is a huge advantage over the hammer and punch when there is limited space to work. There is even an advantage over the automatic center punch in some cases because you don't have to put a bunch of pressure on the punch to make it operate.

Q: How easy was it to use?

A: Easy as can be. Hold one end of the punch or chisel in place and pull the other end against the spring tension and then release the end not being used.

Q: On a scale of 1 to 10, how would you rate this tool overall? Why?

A: I would give this a 10. This is a super simple design that is easy to use and that will make many jobs easier. It really shines when there isn't much room to hold a punch or chisel and fit a hammer and be able to swing it. You also have very good control of the pressure or force you are applying to the fastener. According to Mayhew, the tool can deliver 350 psi of force. ❌

PRODUCT DESCRIPTION

The **Mayhew Tools 3-pc Hammerless Set**, No. 89021, includes a prick punch/center punch combo, a pin punch/hammer combo, and a cold chisel/hammer combo. Available in a convenient pouch for easy storage. The spring-powered tools are safe to use while also delivering extreme force and precision while marking, cutting, punching, starting, and/or setting, without the need for a traditional hammer. Ideal for use on wood or metal surfaces, these tools deliver up to 3,500 lbs of striking force. Simply place the tool directly on the work surface, pull back the spring, and release.

Circle 30 on card or click "PTEN e-inquiry" on VehicleServicePros.com

mer, center and prick punch, and a door pin punch. The door pin punch shines brightly when you need to remove the pin from the bottom hinge on the doors inside your shop or house.

Q: What features did you like?

A: I liked their simple, easy-to-use design.

Q: How was its packaging?

A: Nicely packaged in a pouch that is see-through from one side. It's wide enough to hold six punches and still lay flat. There is a metal re-enforced hole for hanging and a button to keep the tools inside for when you toss it in a tool bag.

Q: Is there anything you had questions or concerns about in regard to the tool?

A: Initially I wondered if there would be other sizes available, but after looking at the Mayhew Tools website I learned that there are quite a few other sizes. I will be purchasing them to add to my tool arsenal.



JOHN BAUMGARDT III is the owner/operator of Baumgardt's Auto Repair in Fillmore, Indiana. He has been a professional auto tech for about 20 years. He attended the two-year Auto

Mechanics program at Lancaster Vocational High School. Previously, Baumgardt worked at AAMCO Transmissions and earned about a dozen AAMCO certificates. He believes it's important to provide an honest, quality service that people can depend on.

This product was given to the reviewer free of charge from the manufacturer.



FOR MORE INFORMATION ON THESE PRODUCTS,
CLICK ON "PTEN E-INQUIRY"
at [VehicleServicePros.com](https://www.VehicleServicePros.com)
OR CIRCLE THE NUMBER ON THE CARD.

Milwaukee Tool Auto Hammers

Reviewed by Brian Culotta, shop foreman/master technician at Dave's Auto Care in Willoughby, Ohio.

Q: How did the tools function as far as saving you time?

A: Repairing vehicles in the heart of the Rust Belt, hammers become a technician's wing-man. Having a premium hammer by your side certainly makes the day go by smoother. You might be thinking "It's just a hammer, how special can it really be!?" Trust me when I say these hammers have been a game-changer.

Q: How has using these tools impacted your shop's profitability?

A: Having a complete assortment of hammers makes any repair technician more



PRODUCT DESCRIPTION

The **Milwaukee Tool Dead Blow Hammers** are designed to provide maximum impact with minimal rebound when striking surfaces. They're also designed to provide maximum durability with a steel-reinforced handle. Available in two sizes: 28 oz. and 48 oz.

The **Milwaukee Tool Steel Ball Peen Hammer** features a shockshield grip to reduce vibration. The peen end can shape, form, and spread metal while the smooth face is meant to strike punches and chisels. Available in two sizes: 16 oz. and 24 oz.

The **Milwaukee Tool Dead Blow Ball Peen Hammer** is designed to offer higher striking power with minimal effort. The hammer's overmold handle and anti-slip grip provide more control while swinging to strike objects. Available in two sizes: 16 oz. and 32 oz.

Circle 31 on card or click "PTEN e-inquiry" on [VehicleServicePros.com](https://www.VehicleServicePros.com)

efficient and effective at their tasks. Using these hammers offered the power and strength needed to handle tough jobs while at the same time having the appropriate balance and control to not cause unwanted damage to the component you're striking, or its neighbor.

Q: How easy were they to use?

A: The fantastic comfort/anti-slip grip handle these hammers have has given me a new level of confidence when going into battle. Pair that level of confidence with the added control and power a dead blow hammer offers and you got yourself a new best friend.

Q: What features did you like?

A: The overall balance of these hammers is fantastic and they come with a lifetime warranty.

Q: Is there any way you could think to improve or add to these tools?

A: The clear-coat type finish on the striking end of the hammers is nice when they're new, but it does become "smudged" up. However, this is only a cosmetic issue.

Q: On a scale of 1 to 10, how would you rate this tool overall? Why?

A: Ten. This is a premium quality product! ✖



BRIAN CULOTTA is a graduate of the Universal Technical Institute in Chicago, Illinois. After graduating, he started working for an independent car dealership as a lead technician for seven years. He then moved to a new job at an independent repair shop where he stayed for three years. He now works at Dave's Auto Care in Willoughby, Ohio, as the shop foreman and ASE Master L1, L3 technician.

This product was given to the reviewer free of charge from the manufacturer.

Channellock 10" WIDEAZZ Adjustable Wrench, No. 10WCB

Reviewed by Pete Rudloff, owner of Pete's Garage Inc. in Newark, Del.



Q: How did the tool function as far as saving you time?

A: By incorporating an unusually wide jaw set into a small-to-store tool, it's like having multiple adjustable wrenches in one.

Q: How has using this tool impacted your shop's profitability?

A: The tool reduces setup time, specifically MIG welding bottles and gauges.

Q: What types of jobs/repairs did you use this tool for?

A: This is a tool for no precise fasteners like for welding bottle connections on MIG or TIG setup or switching oxy acetylene outfits. I also see value in hooking nitrogen

test bottles up to A/C systems. Basically, anything with standard fittings of most sizes this wrench will work well with.

Q: What kind of setup was involved before using the product?

A: There was zero setup, just unbox it and use it. It's very intuitive.

Q: What features did you like?

A: For sure the extra wide and extra deep jaws. The rubberized handle is nice and comfy too.

Q: How does this tool compare to other tools you've used like it?

A: I own several different sized adjustable wrenches, but by far this one is way more versatile because of its adjustability.

Q: Is there anything you had questions or concerns about in regard to the tool?

A: None, the tool is quite user friendly and does exactly what it is designed to do.

Q: On a scale of 1 to 10, how would you rate this tool overall? Why?

A: A solid nine. I think it's a great tool and has lots of practical purpose. It's not overly fancy and performs quite well.

Side note: While reviewing this tool, I had it sitting on my desk and a local distributor happened to notice it and mentioned he's getting a lot of technicians asking for him to order them one. I'm not really surprised but am surprised something similar hasn't been available sooner. ☒



PETE RUDLOFF is a nationally awarded technician, national automotive instructor/consultant, technical writer, software developer, automotive trade advocate, and owner of Pete's

Garage Inc. in Newark, Del. Rudloff has a national reputation as friend to the general auto repair shop and is known for fixing difficult to fix cars and facing challenging trade issues head-on. In 2016, Rudloff created FlexCheck Auto DVI in order to help independent auto repair shops nationwide increase their revenue.

PRODUCT DESCRIPTION

The **Channellock 10" WIDEAZZ Adjustable Wrench**, No. 10WCB, features a wide 2" jaw opening to support large sized nuts and bolts. The combination of a smart and comfortable tapered handle design with Code Blue grips, a four-thread knurl, and minimal head width improves performance in confined spaces. Additionally, the tool offers laser engraved measurement scales, is made from rugged chrome vanadium steel, and has a chrome finish for rust prevention. The Channellock adjustable wrenches are made in Spain.

Circle 32 on card or click "PTEN e-inquiry" on VehicleServicePros.com

This product was given to the reviewer free of charge from the manufacturer.



FOR MORE INFORMATION ON THESE PRODUCTS,
CLICK ON “PTEN E-INQUIRY”
at VehicleServicePros.com
OR CIRCLE THE NUMBER ON THE CARD.

Carnage Tools

1,000 Im Multi-Function Work Light

Reviewed by John Baumgardt III, owner/operator of Baumgardt’s Auto Repair in Fillmore, Ind.



Q: How did the tool function as far as saving you time?

A: The size makes it quick and easy to grab without being bulky. The light is bright so you can see what you’re looking for.

Q: Was there a manual included? If so, did you use the manual, and was the manual easy to understand?

A: Yes, it came with a very small manual that contained instructions, features, and precautions. I always read through the literature; I prefer to get the longest

PRODUCT DESCRIPTION

The **Carnage Tools** 1,000 Lumen Multi-Function Work Light, No. CT1KWL, is a 1,000 Im, USB-C rechargeable, professional worklight. The CT1KWL is handheld and is durable. Rated IP65, the worklight is able to withstand harsh environments without compromising performance. The light includes a 170 Im flashlight for focused inspection and also a 1,000 Im COB main light to illuminate a wider area. The CT1KWL can be utilized handsfree with its 180-degree pivoting handle, internal magnets, and hanging hooks. **Circle 33 on card or click “PTEN e-inquiry” on VehicleServicePros.com**

life out of my tools and want to use them as intended.

Q: What kind of setup was involved before using the product?

A: You just have to connect the supplied charge cord to a USB adapter or socket and charge it up.

Q: What features did you like?

A: This light has so many features. I like the one-button operation, the two different types of light beams or coverage, and the power/charge indicator lights. The combination of mounting options is awesome. The magnets do not scratch paint, but other stuff that sticks to the magnets will so be careful. The hooks are the perfect size and seem pretty durable.

Q: How does this tool compare to other tools you’ve used like it?

A: I have used a lot of different lights, but this is one of my favorites.

Q: What types of jobs/repairs did you use this tool for?

A: I used it to replace a couple of sets of blend door actuators. It fit nicely under the dash and provided plenty of light. It also squeezed nicely in between the engine and

firewall on a Nissan pickup where I was replacing camshaft sensors. The hooks and magnets held the light right where I needed it when servicing the brakes. I also took it on vacation, turns out it works well for hunting sharks’ teeth at night too.

Q: Is there any way you could think to improve or add to this tool?

A: Being marketed as an inspection light, I think it would be great with UV lights built in to help look for fluorescent dyes.

Q: On a scale of 1 to 10, how would you rate this tool overall? Why?

A: Nine—this is a great light! The battery life and charge time are very good. The variety of options you have to mount and position the light is outstanding. The (top) flashlight works well but could stand to be a little brighter. The main lighting is awesome. ✖



JOHN BAUMGARDT III is the owner/operator of Baumgardt’s Auto Repair in Fillmore, Indiana. He has been a professional auto tech for about 20 years. He attended the two-year Auto Mechanics program at Lancaster Vocational High School. Previously, Baumgardt worked at AAMCO Transmissions and earned about a dozen AAMCO certificates. He believes it’s important to provide an honest, quality service that people can depend on.

This product was given to the reviewer free of charge from the manufacturer.

CATEGORY SPOTLIGHT

POWER TOOLS & AIR TOOLS

Who doesn't love a new power tool? While you may already have a go-to impact wrench or cordless ratchet, it never hurts to see what's new in the market. Power and air tools are constantly evolving. Whether it offers a better power-to-weight ratio, longer reach, faster charge time, built-in LEDs, or perhaps it can handle a specific application more efficiently, it's always worth checking out. Besides, your arms and back may thank you for the upgrade.

FEATURES A 3/4" BORE SIZE

The **Ingersoll Rand 135MAX Heavy Duty Air Hammer** is designed for vehicle, truck, bus, and heavy machinery repair. Weighing in at 4.5 lbs, the 135MAX HD Air Hammer delivers 2,600 bpm, with a 3" piston stroke. It also has a feather-touch trigger that provides the accuracy needed for fine-tuned pin driving and steering, making it ideal for jobs that require light handling. Featuring a 3/4" (19mm) bore size, the air hammer is available in a convenient kit that includes five chisels and the air hammer in a carrying case or as an individual tool.



Circle 34 on card or click "PTEN e-inquiry" on VehicleServicePros.com

FOR PRECISE GRINDING AND MILLING

The **Mueller-Kueps Micro Die Grinder**, No. 297 001, is a mini composite tool ideal for precise grinding and milling with a variable speed twist throttle giving users superior speed control. The tool features maximum concentricity through its precision collet, minimal vibration, and less kick back. It also has a low noise level and is easy to handle due to its BIONIGRIP surface. Air exhaust goes through the hose to the rear.



Circle 35 on card or click "PTEN e-inquiry" on VehicleServicePros.com



DREMOMETER TORQUE WRENCH

Reliability and Durability for the Most Extreme Bolting Applications



DREMOMETER. THE ORIGINAL "LENGTH INDEPENDENT" TORQUE WRENCH

Extension tube friendly for increased leverage without risk of reading error.
Over 25 different models 6 - 3,000 Nm range, accuracy +/- 3%
Indestructible 100% milled aluminum exterior design.
Clear audible and tactile "click" function.



Learn more at www.gedore.com

GERMAN
ENGINEERING

Circle 37 on card or click "PTEN e-inquiry" on VehicleServicePros.com

36 PTEN © APRIL 2023 © www.VehicleServicePros.com



FOR MORE INFORMATION ON THESE PRODUCTS,
CLICK ON "PTEN E-INQUIRY"
at VehicleServicePros.com
OR CIRCLE THE NUMBER ON THE CARD.



BATTERY OR MANUAL DRIVEN

The **Vessel Rechargeable Ball Grip Screwdriver with 25-pc Bit Set**, No. 220USB-25U, is ideal for working in tight areas. The cordless screwdriver can be used manually for higher torque or breaking screws loose or electric powered for quick tightening. The screwdriver charges in one hour and includes a USB cable for recharging. Also included is an extension for the bits. The kit comes in a solid plastic case.

Circle 36 on card or click "PTEN e-inquiry" on VehicleServicePros.com

MAXIMUM TORQUE OF 35 FT-LBS

The **Milwaukee Tool M12 FUEL 3/8" Extended Reach High Speed Ratchet** is able to fit into tight spaces while delivering up to 35 ft-lbs of maximum torque. Featuring a long reach and small head size, users can complete critical applications around automobiles and heavy duty equipment. The extended neck design provides more reach and its compact head profile and recessed forward-reverse shift knob reduces the width, providing access at 0.76". The high speed ratchet delivers 450 rpm, weighs just over 2 lbs, and is also available in 1/4".

Circle 38 on card or click "PTEN e-inquiry" on VehicleServicePros.com



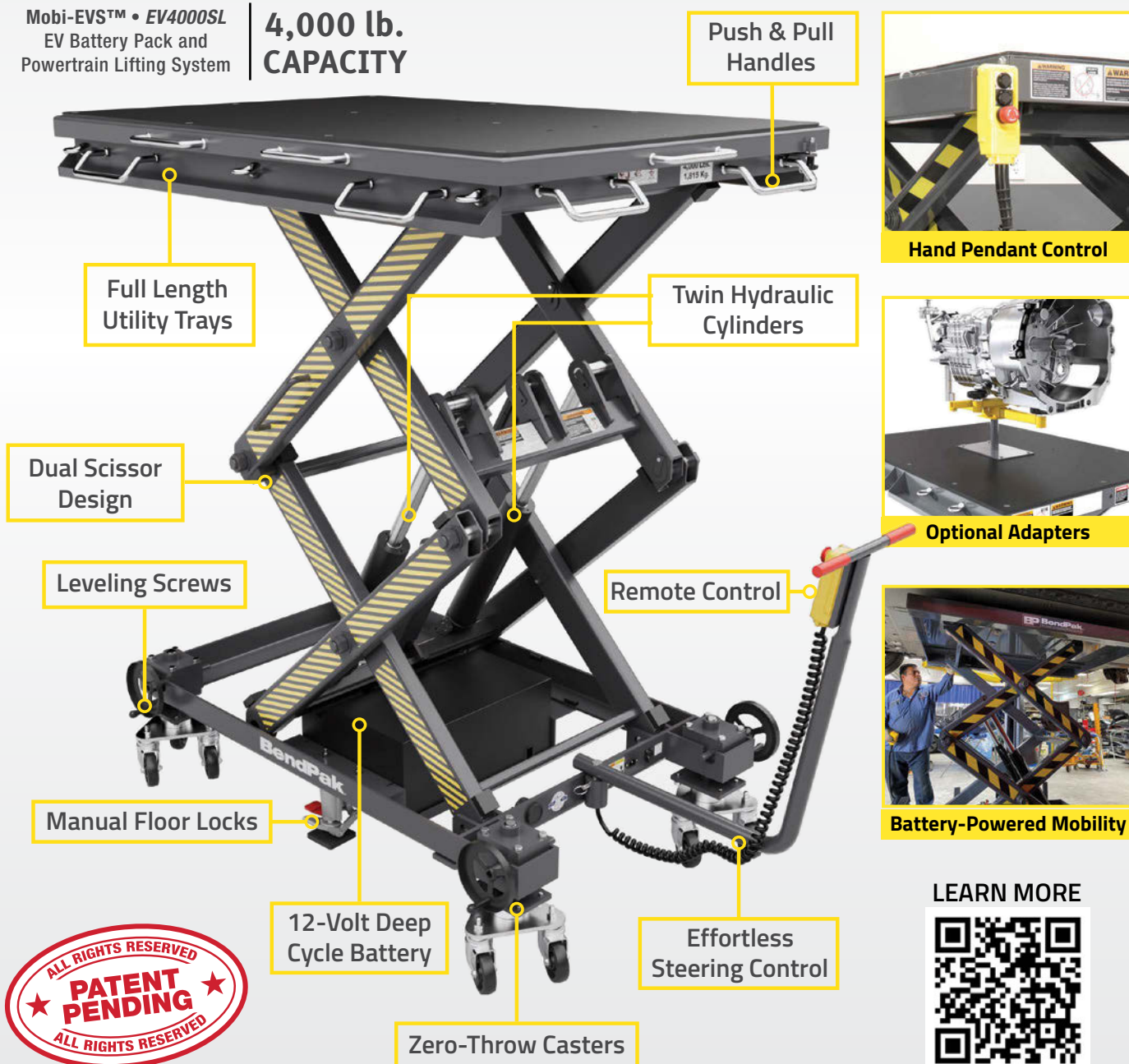
How do you plan to service **EV battery** packs?

BendPak's revolutionary **Mobi-EVS™** is a full-rise battery powered mobile scissor lift table that is perfectly suited for Electric Vehicle Service and EV Battery Pack replacement. With its compact design, this space-saving scissor lift can be easily transported anywhere in the workplace, making it ideal for multi-bay facilities or workplaces with confined areas.

To learn more visit www.bendpak.com/mobi-evs

Mobi-EVS™ • EV4000SL
EV Battery Pack and
Powertrain Lifting System

**4,000 lb.
CAPACITY**



LEARN MORE



1-800-253-2363 ■ www.bendpak.com

BendPak®

© 2023 BendPak Inc. All rights reserved.

Circle 39 on card or click "PTEN e-inquiry" on VehicleServicePros.com

CATEGORY SPOTLIGHT

Power Tools & Air Tools



AVAILABLE IN 1/2" OR 3/4" ANVIL SIZE OPTIONS

The **Durofix 60V Cordless Brushless Jumbo Impact Wrenches**, Nos. RI60164 and RI60164-6, have two anvil size options: 1/2" (No. RI60164) and 3/4" (No. RI60164-6). The 1/2" impact wrench delivers up to 1,500 ft-lbs of maximum reverse torque and offers three preset torque stages (332, 450, and 1,000 ft-lbs). The 3/4" impact wrench has a maximum reverse torque of 1,605 ft-lbs and offers three preset torque stages (332, 450, and 1,070 ft-lbs). Both feature a built-in LED light and battery power indicator.

Circle 40 on card or click "PTEN e-inquiry" on VehicleServicePros.com



QUICK-CHANGE LOCKING COLLET

The **6-pc 4V Cordless Screwdriver Set**, No. SBD4V6S, from **Mac Tools** features a compact design with a 300 rpm motor that maximizes speed while helping to minimize strain. The IP54 rating and durable handle material ensure jobsite protection against water and dust, while an internal locking mechanism stabilizes and protects gearing when manual torquing is required. Additionally, it offers five LEDs, a three-stage charge indicator, a simple push button for driving and reversing, and an intuitive, quick-charge collet for bit swap-out and secure hold. Fully recharges in 70 minutes.

Circle 41 on card or click "PTEN e-inquiry" on VehicleServicePros.com



PULLING FORCE OF 3,579 LBS

The **Marson BT-8 Battery-Powered Rivet Nut Installation Tool** from **Howmet Fastening Systems** is designed to deliver reliable pull-force for high-volume assembly applications. Engineered for versatility and extensive use, the tool is lightweight, has an ergonomic grip and built-in LED, offers ideal balance, and has a recharge time of approximately 45 minutes. The tool has a stroke length of 0.25" and a pulling force of 3,579 lbs. The BT-8 kit includes one tool with battery, battery charger, and carrying case.

Circle 42 on card or click "PTEN e-inquiry" on VehicleServicePros.com



EZ-COIL
PATENTED REWIND SYSTEM

**SAFEST REELS
IN THE INDUSTRY.**

- ✓ Eliminate dangerous whipping hazards.
- ✓ Requires no external power source.
- ✓ Wide array of reel models & options to increase worksite efficiency & safety.

**DURABLE. RELIABLE.
HOSE, CORD, & CABLE
PRO GRADE REELS**

100 years
Coxreels
USA made since 1923

► SOLUTIONS FOR:

WATER | AIR | POWER | HYDRAULIC | PNEUMATIC | VACUUM | WELDING
AND MORE

**MADE IN THE
USA
SINCE 1923**

www.COXREELS.COM



Circle 43 on card or click "PTEN e-inquiry" on VehicleServicePros.com



FOR MORE INFORMATION ON THESE PRODUCTS,
CLICK ON "PTEN E-INQUIRY"
at VehicleServicePros.com
OR CIRCLE THE NUMBER ON THE CARD.

INNOVATING
SAFETY

UP TO 80% SLOWER RETRACTION

CATEGORY SPOTLIGHT

Power Tools & Air Tools



NOW AVAILABLE IN BLUE

The **Matco Tools Long Barrel Pneumatic Air Hammer - Blue**, No. MT2916B, delivers 2,300 bpm from a 3-3/4" piston stroke. The forward grip design gives the technician total control and helps maintain the chisel on the work piece. A rubber dampener helps reduce hand fatigue, shock, and vibration for ideal user comfort when powering through challenging applications. It also features a soft rubber overmold handle for a comfortable grip, an integrated chuck design for quick bit installation, and a front exhaust system that directs air away from the end user.

Circle 44 on card or click "PTEN e-inquiry" on VehicleServicePros.com



OFFERS A MAXIMUM SPEED OF UP TO 7,000 RPM

The **Martins Industries Impulse 1/2" Classic Impact Wrench**, No. MX-C1, is equipped with a twin hammer design and delivers a maximum working torque of 531 ft-lbs with a maximum speed of up to 7,000 rpm. Designed with an ergonomically, grooved grip handle which maintains operator control, efficiency, reduces fatigue, and slippage during extended periods of time. The five-speed impact wrench also has a control mechanism to easily switch between clockwise and counter-clockwise rotational torque direction to suit users' lug nut fastening needs with the accompaniment of a 1/2" drive socket.

Circle 45 on card or click "PTEN e-inquiry" on VehicleServicePros.com

FEELER GAUGE SETS

- Use to measure tappet clearances, spark plugs gaps, bearing clearances, piston ring gaps, and other precise manufacturing tolerances

- Each blade is laser etched with decimal and metric equivalent for easy identification

- Available in SAE, Metric, Offset, Long, Mini, Go-No-Go, and more

GREAT FOR DESIGNERS, ENGINEERS & MECHANICS



WWW.LANGTOOLS.COM
Circle 46 on card or click "PTEN e-inquiry" on VehicleServicePros.com

LANG TOOLS
Professional Tools For 4 Generations™

TOOL AID **TOOL AID**®
TOOLS FOR THE PROFESSIONAL



FIRST TO MARKET



Clamp Probe Set
Cat. No. 21200

Originally designed to allow a lone technician to test for voltage drop on top battery posts; its handsfree operation is a useful diagnostic tool when a third hand is needed.

- Works with standard 4mm banana plugs
- Probe swivels and adjusts in height to test where you need it
- Works great for testing recessed connections
- Clamp tips for added grip
- Available individually as the 21215 (black) and 21216 (red)

43-53 East Alpine Street, Newark, NJ 07114
973-824-7730
TOLL FREE 800-888-2080 FAX 973-621-7132
www.toolaid.com

Circle 47 on card or click "PTEN e-inquiry" on VehicleServicePros.com



1125



- 1250 ft-lb loosening torque

1/2" COMPOSITE IMPACT WRENCH

805-HT



- 130 ft-lb maximum torque
- 180 RPM

3/8" HIGH TORQUE RATCHET

5250-A-T



- 2,500 BPM
- 3" Piston stroke

.401 Shank Super Duty Air Hammer

AIRCAT.com • 888 4-AIRCAT

- facebook.com/aircat.pneumatictools
- instagram.com/aircatusa

Circle 48 on card or click "PTEN e-inquiry" on VehicleServicePros.com

CATEGORY SPOTLIGHT

Power Tools & Air Tools



IDEAL FOR GENERAL CUTTING, BODY PANEL CRIMPING, AND MORE

The **SP Air Long Barrel Air Hammer**, No. SP-1400, is ideal for general cutting, body panel crimping, shearing, rust/paint removal, chipping, and scraping. It has a built-in air regulator, comfortable non-slip ergonomic grip, and a graduated tripper control. With an aluminum alloy housing, the tool is able to withstand tough environments, repeated drops, and exposure to harsh chemicals. Its quick change coil spring retainer allows for fast and easy chisel changes (chisel not included). It weighs 3.63 lbs, measures 8.5" in overall length, and has a free speed of 3,000 bpm.

Circle 49 on card or click "PTEN e-inquiry" on VehicleServicePros.com



UPDATED FOUR-MODE SPEED SETTINGS

The **DeWalt 20V MAX XR 1/2" High Torque Impact Wrench with Hog Ring Anvil**, No. DCF900GP2, delivers up to 1,030 ft-lbs of maximum fastening torque and 1,400 ft-lbs of maximum breakaway torque. Its Precision Wrench mode helps prevent overtightening in forward and run-off in reverse for additional user control. Additionally, the impact wrench features updated four-mode speed settings, a variable speed trigger, and an on-tool LED. It measures 8.8" in length and 9.1" in height, and weighs 6.4 lbs.

Circle 51 on card or click "PTEN e-inquiry" on VehicleServicePros.com



PROVIDES OPTIMAL DRILLING SPEED CONTROL

The **Snap-on Mini Right Angle Air Drill**, No. PDRR2005, is designed to allow technicians to access hard-to-reach areas quickly and more accurately. The variable-speed trigger provides optimal drilling speed control and smooth operation for high performance, plus an added degree of accuracy when precise drilling is critical. Weighing only 1.45 lbs, this compact air drill is small enough for technicians to tackle work in cramped compartments, while providing ideal power and durability.

Circle 50 on card or click "PTEN e-inquiry" on VehicleServicePros.com



FEATURES ONE-HAND REVERSE SYSTEM

The **Chicago Pneumatic 1/2" Cordless Impact Wrench**, No. CP8854, is lightweight and compact, weighing 5.51 lbs with a length of 7.44". The CP8854 is ideal for tire changing and quick service wheel applications on light vehicles including cars and vans. Technicians can easily use the wrench to remove wheels quickly for access to brakes, suspension, and shock absorbers, and thanks to a built-in shut off feature, can then pre-tighten wheel nuts with no risk of overtightening. In addition, the tool features Chicago Pneumatic's one-hand reverse system (CP Side2Side) for ease of use and a bi-material handle that gives a comfortable grip.

Circle 52 on card or click "PTEN e-inquiry" on VehicleServicePros.com

CATEGORY SPOTLIGHT

Power Tools & Air Tools



OFFERS 1,250 FT-LBS OF LOOSENING TORQUE

The **AIRCAT 1/2" Composite Impact Wrench**, No. 1125, weighs 3.8 lbs and offers 1,250 ft-lbs of loosening torque and 1,000 ft-lbs of maximum torque. Other notable features include a twin hammer mechanism, a patented ergonomic handle design, a patented quiet-tuned exhaust that reduces noise level to 87 dBA, an easy-to-use forward/reverse power management lever, and a low-weight, durable composite housing with a magnesium hammer case. The tool measures 7.1" in length.

Circle 53 on card or click "PTEN e-inquiry" on VehicleServicePros.com



ALLOWS FOR LEFT OR RIGHT-HANDED USE

The **Dynabrade 1-1/4" Diameter Mini-Dynorbital Extreme**, No. X125TR, is a random orbital sander ideal for small-scale sanding applications. Its integrated speed control allows for fine adjustment of rpm for artistic results, sensitive workpieces, or when sanding/repairing a coated surface. Weighing just over 1 lb, the X125TR reduces fatigue and the likelihood of repetitive motion injuries during extended use. The tool is also compact, and has an ambidextrous design to fit naturally in most hands and allows for left or right-handed use. Includes tool hanger bracket for easy storage and a vinyl-face, locking-type pad (No. 54037) for quick and easy pad changes.

Circle 54 on card or click "PTEN e-inquiry" on VehicleServicePros.com

Eliminate chaos and clutter with the **ORIGINAL** socket tray *invented* by Hansen Global.



- Organize tools by size and style for easy identification.
- Secure regular, deep and semi-deep sockets all on one tray.
- All trays are molded from rugged ABS plastic to shrug off grease, chemicals, and other debris, and come with a lifetime guarantee.
- 3 row trays available in 1/2", 3/8" and 1/4" drive.
- 2 row trays available in red, gray, orange and green.



Proudly 100% made in the USA since 1995 – Lifetime Guarantee.

877-793-5213

hansenglobalinc.com

Circle 55 on card or click "PTEN e-inquiry" on VehicleServicePros.com

MARKETPLACE

Contact Mackenzie Verschoor at MVerschoor@EndeavorB2B.com for advertising information.



Use All the Tools of the Trade!

Professional Tool & Equipment News offers a wide variety of classified opportunities just waiting for you!

Contact Mackenzie Verschoor for more information: mverschoor@endeavorb2b.com

TURN YOUR TOOL IDEA INTO MONEY

 **LISLE CORPORATION CURRENTLY PAYS ROYALTIES TO OVER 120 INDIVIDUALS.**

Lisle has been in business for over 110 years and for over 40 years have been working with individuals on an award or royalty basis. If you have an original tool idea which others may need, we have a procedure to evaluate your idea.

Respond now to request an idea disclosure packet.

P.O. Box 89 • Clarinda, IA 51632-0089
712-542-5101 • Fax 712-542-6591
www.lislecorp.com/about/program



Ray uses the Milwaukee PACKOUT storage to keep his tool setup easily changeable.
Photography by: Taylor Ray

A modular solution to tool storage

This technician used Milwaukee Tool PACKOUT storage to give him the freedom to modify his setup whenever he needs.

By Emily Markham, Editor

Shop owner, technician, and drift racer Taylor Ray, has a rather unique tool storage setup. Where some technicians buy toolbox after toolbox to try and fit their ever-expanding tool collection, Ray has a more modular solution.

A CHANGEABLE SETUP

After growing out of his previous Milwaukee Tool toolbox, Ray decided to take a new approach—he bought two 61” long Milwaukee toolboxes with worktops and pegboard backs as well as a variety of Milwaukee PACKOUT drawers, crates, and organizers. From there, he created a workstation for each side of his shop. The two sides mirror each other in that they both have one of the toolboxes and the same setup of PACKOUT storage. However, the setup on the less-used side

»»» OWNER

Taylor Ray

Shop: Garage Built Co.

Location: DeBary, Fla.

of the shop holds tools Ray doesn’t use as frequently. Though both do contain the basics so tools don’t have to trek from one side of the shop to the other.

Ray notes that “The reason I wanted to do it that way is...I can just switch them easily. I’m not stuck, so it’s easier over time to tailor it.”

Though Ray enjoys the flexibility of the PACKOUT storage, his favorite part of the setup is the pegboard backing on the toolbox. For him, it’s an area where he can place his most used tools so he doesn’t have to dig around in a drawer to find them. He also appreciates that the pegboard is on a track, so if he doesn’t want to have it up he

doesn’t have to. Additionally, he finds the worktops of the toolboxes to be must-haves.

“Having worktop spaces is like the most important thing in my opinion in the shop,” Ray says. “If you don’t have a place to put stuff while you’re taking something apart or putting it together it makes it so difficult to stay organized.”

Ray also appreciates that the wooden worktops are reversible, so when one side gets torn up, he can just flip it over to have a nice, clean slate.

WHY MILWAUKEE?


“I got my first Milwaukee box because it was pretty obviously the best value,” Ray explains.

He recalls that for him there really wasn’t any other option, and when his roommate wanted to get the same box, it was, unfortunately, no longer being made. They made a point to look for anything non-Milwaukee specifically to see if they could find anything better. Only after looking at all the toolboxes in his friend’s price range they could, Ray felt that none were on par with Milwaukee. Ray has had his first Milwaukee toolbox for 16 years and has never had a problem with it.

KEEPING IT ORGANIZED

For Ray, organization is key. Like many technicians, he prefers to keep similar tools together so they can be easily found. The PACKOUT storage also offers him the ability to unclip the drawers from the wall so he can take those tools with him on the go.

In the future, Ray would like to add some tool storage cabinets to his setup. Overall, though he’s happy with where his setup is at now.

To view a video of Ray setting up his workstations, check out his YouTube video here: youtube.com/watch?v=bVWtDa3S7Go. 

Want to see more photos of Ray’s box? Visit: VehicleServicePros.com/53028933



Want to show off YOUR Big-Time Box? For more information, email Editor@VehicleServicePros.com.

WORK MEETS COMFORT



UP TO **5** LOCKING HEIGHTS

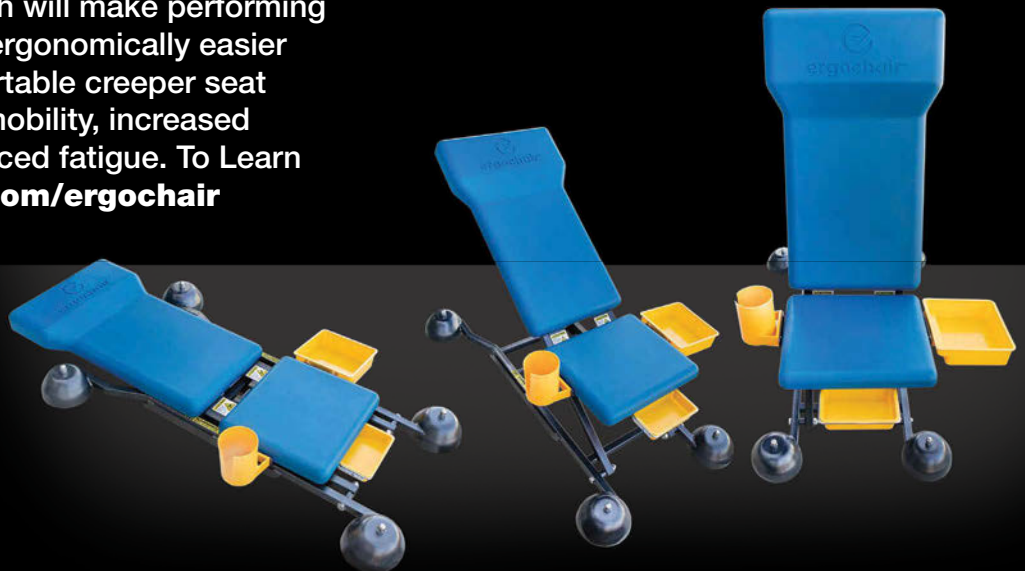
ROLLING CREEPER SEAT CONVERTS FROM HIGH TO LOW

The **ergochair™** is the adjustable height rolling work seat which will make performing awkward work tasks ergonomically easier and safer. This comfortable creeper seat offers a full range of mobility, increased productivity, and reduced fatigue. To Learn more visit bendpak.com/ergochair



TRANSFORMS COMFORTABLY FROM CREEPER TO UPRIGHT SEAT

LEARN MORE 



1-800-253-2363 • BENDPAK.COM

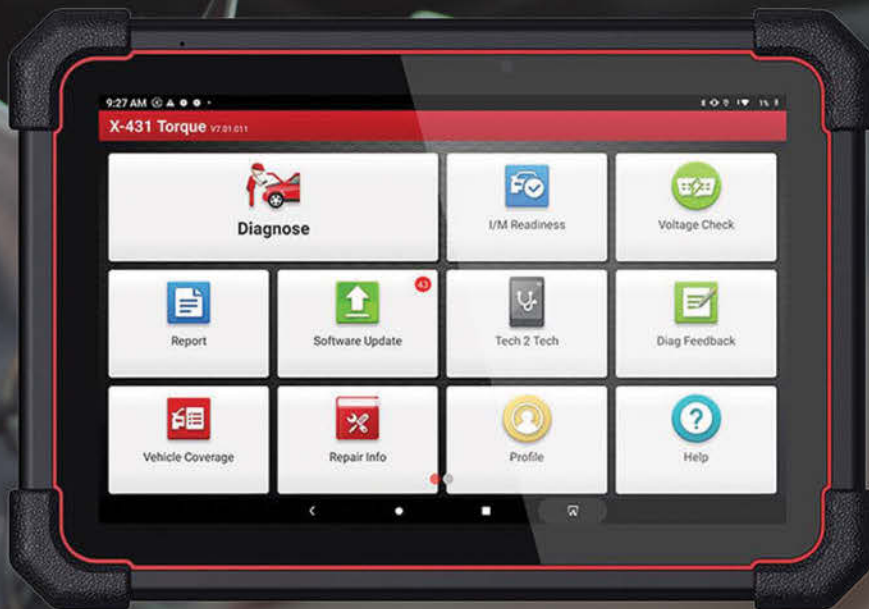
©2023 BendPak Inc. All rights reserved.



Circle 56 on card or click "PTEN e-inquiry" on VehicleServicePros.com

X-431 TORQUE LINK

DIAGNOSTIC TO INFINITY



PRODUCT SPECIFICATIONS AND FEATURES

- Supports CAN/CANFD/DoIP & J2534/D-PDU/RP1210
- Code Assist by **IDENTIFIX**
- OE-Level Bi-directional Functionality
- Supports X-431 Fix Repair Information by **METRIX DRIVEN**
- Supports Smartlink Remote Diagnosis
- Topology Module Mapping Overview
- Auto Detects Vin
- New Pin Detection Function