

# PTEN

Professional **Tool & Equipment** News

## The Independent Tool Authority

### Save Phace Ripped RFP E Series

# WELDING HELMET

By SFA Companies

Details on the cover products,  
and other new tools  
page 10

▼ Supports all  
programmable  
TPMS sensors



▼ Turns Pad II into  
a heavy duty  
truck scan tool



▼ Uses a patent-  
pending remote  
control



### Tool Reviews:

Technician feedback on products  
from Radcap, Mastercool, Gray  
Manufacturing and Autel  
Page 36

## EXCLUSIVE!

### 2017 Aftermarket Profile:

A statistical snapshot of shop expectations  
and purchase plans in the coming year  
page 42

# INNOVATION IS WHAT FUELS



## AIR TOOLS & ACCESSORIES

**24418**

Lightweight, Compact, Heavy Duty 1/2" Impact Wrench with 7 Impact Sockets



## SPECIALTY TOOLS

**27212**

Comprehensive Set for Fast and Effective Removal and Installation of Wheel Bearings, Suspension Bushings and Seals without Removing Components from the Vehicle



**27213**

Removes and Installs Front Wheel Hubs and Bearings on Asian, Domestic and German Vehicles Along with Rear Wheel Hubs and Bearings on European Vehicles



## HAND TOOLS



**23982**

Mechanic's Quality 80 Piece 1/4" Ratchet and Socket Set in Sturdy Organizational Case with Metal Latches

## LIGHTING



**24607**

Rechargeable Flashlight with a 500 Lumen Flashlight, 450 Lumen Ultra Slim Wand and a UV Detection Light

Circle 15 on card, or enter at "e-inquiry" on [VehicleServicePros.com](http://VehicleServicePros.com)

See more at [oem-tools.com](http://oem-tools.com). Available through better distributors.





# THAT'S HIM, HE FIXED MY CAR

POWERED  
BY BOSCH

FASTEST  
TO THE FIX

ON-TOOL  
& ONLINE REPAIR  
INFORMATION

EASY  
TO USE

VEHICLE  
COVERAGE



## ***FIX CARS FASTER THAN THE USUAL SUSPECTS***

The OTC Encore diagnostic system with Identifix® works fastest from code-to-fix, has best-in-class coverage, is easy to use and is the ultimate repair suite.

***Request a demo at [otctools.com/fix-cars-faster](http://otctools.com/fix-cars-faster)***

Circle 16 on card, or enter at "e-inquiry" on [VehicleServicePros.com](http://VehicleServicePros.com)

You Tube



[otctools.com/PTENEncore](http://otctools.com/PTENEncore)

**QUESTIONS?**  
888 789 2602

# MARCH Contents

## Exclusive

### 42 2017 AFTERMARKET PROFILE

The second annual Aftermarket Profile provides feedback from shop owners and technicians, on purchase plans and industry expectations for the coming year.

## Features

### 10 FEATURED NEW PRODUCTS

Check out new tools from SFA Companies, Launch Tech USA, Rotary Lift and Matco Tools. Then, read about all the other new products, beginning on page 11.

### 36 TOOL REVIEWS

Our review panel gives feedback on the following tools:

- Radcap Radiator Cap Wrench
- Mastercool Arctic Commander Line of RRR machines
- Gray Manufacturing Wireless Portable Lifts

### 41 DIAGNOSTIC TOOL REVIEW

Technicians give their takes on diagnostic tools. This month:

- Autel MaxiSYS commercial vehicle diagnostics scan tool

## 2017 AFTERMARKET PROFILE

*A statistical snapshot of purchasing plans and top revenue opportunities for shops in the coming year.*

[ General Overview Page 43 ] [ Purchasing Information Page 45 ] [ Training Page 52 ]

42



36



40



39



41



58



54

## Departments

### 8 EDITOR'S NOTE

Arguably the most important tool in the shop, a scan tool can go underutilized because of its seemingly intimidating learning curve. It's time to break that cycle.

### 54 CATEGORY SPOTLIGHT

This month's section features product information and user tips on air conditioning service tools and equipment. In addition to product details, this section features links to product video demos, tech tips and more.

### 57 MARKETPLACE

### 58 BIG-TIME BOXES

Owner: Danny White  
Shop: Perry Subaru  
Location: Norfolk, Va.

## On Our Cover

Save Phase RFP E Series  
Ripped Welding Helmet by  
SFA Companies



## In the Next Issue

Tool Briefing head-to-head: contributing editor Barry Hoyland compares a scan tool and lab scope for mass air flow fault diagnosis.



# WE'VE GONE COMMERCIAL

**LIGHT DUTY / MEDIUM DUTY / HEAVY DUTY**

- AGRAL
- AISIN
- ALLISON
- AUTOCAR
- BENDIX
- BOSCH AUTO

- CAPACITY
- CATERPILLAR
- CUMMINS
- DETROIT
- DODGE
- EATON

- FIAT
- FORD
- FOTON
- FREIGHTLINER
- GMC
- GREAT WALL

- HINO
- HYUNDAI
- INTERNATIONAL
- ISUZU
- IVECO
- KENWORTH

- KIA
- MACK
- MERCEDES BENZ
- MITSUBISHI
- MITSUBISHI FUSO
- MTU

- MWM
- NISSAN
- OBD
- PACCAR
- PETERBILT
- POWER STROKE

- RENAULT
- SETRA
- STERLING
- TOYOTA
- UD
- VOLKSWAGEN

- VOLVO
- WABCO
- WESTERN STAR
- WORKHORSE
- ZF MERITOR



LIST PRICE

**NOW**

AS OF 1/1/2017

**\$4695**

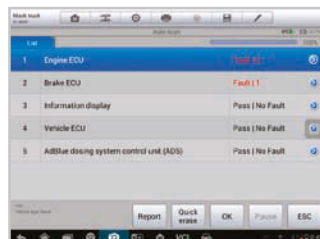
The complete MaxiSYS CV tool kit comes with the latest compact size J2534 MaxiFlash Elite. Features a built-in bluetooth VCI and performs pass-thru programming functions. The software is updateable and SAE J2534 and J2534-2 compatible.

**FIND OUR CV TOOL  
EDITORIAL ON PAGE 41**

**1-YEAR SOFTWARE UPDATES & 1-YEAR WARRANTY INCLUDED**

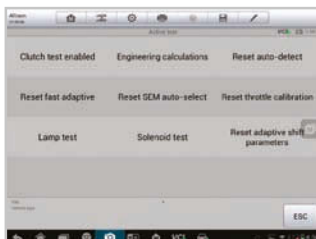
**AUTEL MaxiSys CV**

## AUTO SCAN DIAGNOSTICS



Comprehensive vehicle analysis, live data, actuation tests, adaptations and ECU information.

## TRANSMISSION ACTIVE TESTS



Bidirectionally tests transmission components and resets specific calibrations.



**NEW SMALLER J2534 MAXIFLASH ELITE**

Circle 17 on card, or enter at "e-inquiry" on [VehicleServicePros.com](http://VehicleServicePros.com)



(855) 288-3587

© 2017 Autel Intelligent Technology Inc. Rights Reserved. Trademarks belong to respective owners.



[autel.com](http://autel.com)

All tools must be registered and updated immediately upon purchase to be guaranteed the latest coverage.



**AUTEL**

# Now Online At VEHICLESERVICEPROS.com



## Article

### Are you ready for Pass-Thru?

The Right to Repair Act will be an industry game-changer as manufacturers move towards web-based delivery of programming via Pass-Thru.

To read the full article, visit [VehicleServicePros.com/20847075](http://VehicleServicePros.com/20847075)

## Ask the Expert



What do you look for when selecting a heavy duty diagnostic tool? Look for something that assists with both diagnosis and repairs. To read the full article, visit:

[VehicleServicePros.com/20850565](http://VehicleServicePros.com/20850565)

## Tool Review



The ProMaxx Nino Exhaust Manifold Repair Tool mounts directly into the exhaust passage of the EGR side of the exhaust manifold on the Ford 6.7L diesel. To read the full review, visit:

[VehicleServicePros.com/20848453](http://VehicleServicePros.com/20848453)

## Video



Designed to illuminate confined spaces, users can use the Mac Tools Pro Stick+ Light anywhere on the vehicle.

To watch a video about this product, visit:

[VehicleServicePros.com/20846868](http://VehicleServicePros.com/20846868)

## Featured Products



### TPG100 Tread Depth and Pressure Gauge

Bartec USA, LLC

[VehicleServicePros.com/20843912](http://VehicleServicePros.com/20843912)



### Offerback 3/4 Nitrile Coated Knit Gloves, No. 12029

Gaiteon

[VehicleServicePros.com/20846518](http://VehicleServicePros.com/20846518)



### Mega Macs 56 Diagnostic Tool

Hella Gutmann Solutions

[VehicleServicePros.com/20847064](http://VehicleServicePros.com/20847064)



Look for this logo in PTEN to identify where you can email to provide feedback and contact us.

## PTEN Professional Tool & Equipment News

### The Independent Tool Authority

Published by SouthComm Business Media, Inc.

PO Box 803 • 1233 Janesville Ave  
Fort Atkinson WI 53538  
SouthComm Business Media 920-563-6388 • 800-547-7377

Printed in the U.S. Vol. 28, No. 2, March 2017

GROUP PUBLISHER Larry M. Greenberger  
LGreenberger@SouthComm.com

PUBLISHER Kylie Hirko  
262-473-9497 KHirko@SouthComm.com

EDITOR Erica Schueller  
800-547-7377 x1630 ESchueller@SouthComm.com

MANAGING EDITOR Mike Schmidt  
800-547-7377 x1394 MSchmidt@SouthComm.com

ASSISTANT EDITOR Vesna Brajkovic  
800-547-7377 x1645 VBrajkovic@SouthComm.com

ASSISTANT EDITOR Stefanie Von Rueden  
800-547-7377 x1602 SVonueden@SouthComm.com

### MULTIMEDIA ACCOUNT EXECUTIVE

Cortni Jones 800-547-7377 x1391  
CLJones@SouthComm.com

### MULTIMEDIA ACCOUNT EXECUTIVE

Diane Braden 800-547-7377 x1364  
DBradens@SouthComm.com

### MULTIMEDIA ACCOUNT EXECUTIVE

Mattie Gorman 800-547-7377 x1636  
MGorman@SouthComm.com

### INSIDE SALES

Kaylee Kidd  
800-547-7377 x1362 KKidd@SouthComm.com

### PRODUCTION MANAGER

Wes Gray  
800-547-7377 x1337 WGray@SouthComm.com

### ART DIRECTOR

Julie Whitty

### LIST RENTAL REP

Elizabeth Jackson  
847-492-1350 x18 ejackson@meritdirect.com

### AUDIENCE DEVELOPMENT MANAGER

Suzanne Carlson

## SOUTHCOMM, INC

CEO - Chris Ferrell

CFO - Bob Mahoney

COO - Blair Johnson

VP, Production Operations - Curt Pordes

VP, Technology - Eric Kammerzell

EVP - Gloria Cosby

Subscription Customer Service

877-382-9187; 847-559-7598

Circ.PTEN@omeda.com

PO Box 3257 • Northbrook IL 60065-3257

Article reprints • Brett Pettilo

Wright's Media 877-652-5295, ext. 118

bpettillo@wrightsmedia.com

Professional Tool & Equipment News (USPS 012-426, ISSN 1081-4485 print; ISSN 2150-2072) is published ten times a year in February, March, April, May, June, July, August, September, October, and December by SouthComm Business Media, LLC, 1233 Janesville Avenue, Fort Atkinson, WI 53538. Periodicals postage paid at Fort Atkinson, WI 53538 and additional mailing offices. POSTMASTER: Send address changes to Professional Tool & Equipment News, PO Box 3257, Northbrook, IL 60065-3257. Canada Post PM40612608. Return undeliverable Canadian addresses to: Professional Tool & Equipment News, PO Box 25542, London, ON N6C 6B2.

Subscriptions: Individual subscriptions are available without charge in the U.S. to qualified subscribers. Publisher reserves the right to reject non-qualified subscriptions. Subscription prices: U.S. \$46 per year, \$88 two year; Canada/Mexico \$67 per year, \$124 two year; All other countries \$98 per year, \$185 two year. All subscriptions payable in U.S. funds, drawn on U.S. bank. Canadian GST#R42773848. Back issue \$10 prepaid, if available. Printed in the USA. Copyright 2017 SouthComm Business Media, LLC.

All rights reserved. No part of this publication may be reproduced or transmitted in any form or by any means, electronic or mechanical, including photocopy, recordings or any information storage or retrieval system, without permission from the publisher.

SouthComm Business Media, LLC does not assume and hereby disclaims any liability to any person or company for any loss or damage caused by errors or omissions in the material herein, regardless of whether such errors result from negligence, accident or any other cause whatsoever. The views and opinions in the articles herein are not to be taken as official expressions of the publishers, unless so stated. The publishers do not warrant, either expressly or by implication, the factual accuracy of the articles herein, nor do they so warrant any views or opinions offered by the authors of said articles.

FACEBOOK  
[facebook.com/VehicleServicePros](http://facebook.com/VehicleServicePros)

TWITTER  
[@VehicleSvcPros](http://@VehicleSvcPros)

LINKEDIN  
[linkedin.com/company/VehicleServicePros](http://linkedin.com/company/VehicleServicePros)



INDUSTRY FIRST TO COMBINE COMPLETE TPMS WITH ADVANCED DIAGNOSTICS

# WHY BUY A SECONDARY TPMS TOOL? DOUBLE THE DIAGNOSTICS

ALL-IN-ONE tool to trigger, relearn, or program **AUTEL** MX-Sensors and quickly test all vehicle systems.



**ONLY  
2-SKU  
TYPES**

AUTEL MX-sensor 315 MHz    AUTEL MX-sensor 433 MHz

COMPATIBLE  
METAL VALVE &  
RUBBER VALVE

## **AUTEL MX-sensor UNIVERSAL TPMS**

UPDATE DURING INSTALLATION  
FOR LATEST VEHICLE COVERAGE

- ▶ ...MX-Sensors cover 98% of all OE sensors
- ▶ ...Two sensor types reduce shop inventory
- ▶ ...100% ID clone-able / No relearn required
- ▶ ...Tested & certified to meet SAE standards

Circle 18 on card, or enter at "e-inquiry" on [VehicleServicePros.com](http://VehicleServicePros.com)



(855) 288-3587  
[maxitpms.com](http://maxitpms.com)



[autel.com](http://autel.com)

Register and update tools to guarantee latest coverage  
©2017 Autel Intelligent Technology Inc.



**AUTEL**

# Editor's Note



## Stay in the scan tool game

Arguably the most important tool in the shop, a scan tool can go underutilized because of its seemingly intimidating learning curve. It's time to break that cycle.

By Erica Schueller, Editor  
Erica@VehicleServicePros.com

**O**f the products featured in the pages of *PTEN*, diagnostic scan tools rank among the top products we receive requests on for more information. And, diagnostic tools have traditionally been the product category that sees the most development and change year-over-year as tools in this category become more comprehensive, provide more vehicle coverage, get faster and, seemingly, become more intuitive to use.

But just like consumers in the 1980s fretting over the “user friendly” nature of personal computers as they became more mainstream, or the trepidation of texting on your smartphone even today, there can be a lag behind the introduction and actual adoption of new technologies.

Believe it or not, there are some shops out there who don't complete a lot of – if any – diagnostic work. I talked with a shop owner recently outside of State College, Pa. He confirmed they don't regularly use a scan tool in the shop, instead outsourcing this work and focusing on mechanical repairs. While this approach has increasingly become the exception versus the rule, he's certainly not the only one.

When something is seemingly complicated, it can be intimidating. The first step to understanding your scan tool is to acknowledge the complexity of this tool.

According to the 2016 *PTEN* Purchasing Study, 89 percent of shops and technicians own a scan tool. Rather than using it as a really expensive code reader, techs need to understand the full functionality of that tool, and how it can provide freeze frame data, bidirectional controls and information on numerous control modules of the vehicle for the right repair and diagnosis.

Get training from tool manufacturers. Don't be afraid to ask other colleagues about their familiarity with a tool. That scan tool should be used for every vehicle that enters the shop.

I don't want to downplay the necessity of having a mechanical background – and I've heard from a number of shops that young techs fresh out of school sometimes lack the skills to test general mechanics of the vehicle – but the advancements on today's vehicles require a scan tool just to replace a vehicle's battery or after replacing any of the vast array of sensors on a vehicle.

Diagnostic tools will continue to become more prevalent in aftermarket shops, especially with the next phase of the Right to Repair mandate taking effect.

Beginning with 2018 vehicle makes, OEs must make accessible vehicle diagnostic and repair information to consumers and the automotive aftermarket. While a standardized format among all vehicle manufacturers remains to be seen, this mandate should, in theory, make it easier to diagnose a vehicle issue by having all the necessary information.

You're not likely to see these vehicles in your shop anytime soon (unless you complete collision repair too), but this means they'll be on the road by the end of this year.

Not to mention, some OEs have agreed to provide retroactive information for model years as early as 2007.

With this information at your fingertips, it's more important than ever to understand how to get the most out of your aftermarket scan tool. From a competitive standpoint, you'll be able to offer more thorough service and repairs to customers. The question is, will you? **PTEN**



**Mike Schmidt**  
Managing Editor



**Vesna Brajkovic**  
Assistant Editor



**Stefanie Von Rueden**  
Assistant Editor



**Barry Hoyland**  
Contributing Editor

### **PTEN Editorial Advisory Board**

#### **Technicians**

**John Harris,**  
Brooks-Huff Goodyear, Timonium MD  
**Eric Moore,**  
DeMary Trucks, Columbus, OH  
**Lou Fort,**  
K.A.R.S. Inc., Huntingburg, IN

#### **Shop Owners**

**Phil Fournier,**  
Phil's Auto Clinic, Hermet, CA  
**Edwin Hazzard,**  
Southeast Mobile Tech, Goose Creek, SC  
**Barry Hoyland,**  
VSSCA, Camarillo, CA  
**Dave Lang,**  
Independent Vehicle Service, Albuquerque, NM  
**Pete Rudloff,**  
Pete's Garage Inc., Newark, DE

#### **Equipment Manufacturers**

**Chad Schley,**  
Schley Products/SP Tools  
**Jim O'Hara,**  
Clare Automotive



START PUTTING  
**THOUSANDS**  
OF DOLLARS BACK INTO YOUR SHOP.

## UNLIMITED 2% CASH BACK

With the SPARK® CASH CARD every expense could be an opportunity to boost your bottom line and put thousands back into your business. Earn cash back on equipment, parts, advertising, and everything in between.



[CapitalOne.com/SmallBusiness](https://www.CapitalOne.com/SmallBusiness)

Credit approval required. Offered by Capital One Bank (USA), N.A. © 2016 Capital One

**Circle 19 on card, or enter at "e-inquiry" on [VehicleServicePros.com](https://www.VehicleServicePros.com)**

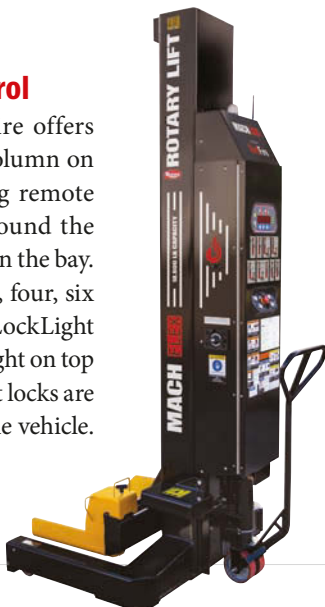


# FEATURED New Products

## Uses a patent-pending remote control

Rotary Lift's Mach Flex powered by RedFire offers technicians the ability to lift 18,800 lbs per column on a mobile column lift, with a patent-pending remote control. This allows technicians to move around the vehicle while operating the lift from anywhere in the bay. Mach Flex lifting systems are available in two, four, six or eight columns. The Mach Flex also features LockLight technology which illuminates a built-in green light on top of the columns if a vehicle is in the air and the lift locks are engaged, indicating that it is safe to work on the vehicle. The lift is manufactured in Madison, Indiana.

Circle 20 on card, or enter at "e-inquiry" on [VehicleServicePros.com](http://VehicleServicePros.com)



## Supports all programmable TPMS sensors

The Matco TPMS Activation/Program Tool, No. MDMAXTPMS, is a TPMS programming tool with built-in manual procedures. The tool's color interface guides users when replacing and servicing TPMS sensors. The MDMAXTPMS supports all known programmable TPMS sensors, according to the company, and is frequently updated with new vehicle and sensor coverage. The tool is compatible with the company's existing Maximus scan tools.

Circle 21 on card, or enter at "e-inquiry" on [VehicleServicePros.com](http://VehicleServicePros.com)



## Turns Pad II into a heavy duty truck scan tool

The Launch X-431 Heavy Duty Truck Add-On Module turns the Pad II into a full-function heavy duty truck scan tool. The module communicates via Bluetooth, or can be hardwired to the vehicle. Users can download the HD Truck app to work on 12V or 24V systems. The module offers extensive model coverage and special functions. It works on CAT, Cummins, Detroit, Freightliner, International, KW, Peterbilt, Sterling and Volvo.

Circle 22 on card, or enter at "e-inquiry" on [VehicleServicePros.com](http://VehicleServicePros.com)



Kicking off the New Products section each month, our Featured New Products page includes brand new products showcased on the cover that are available to the automotive market.



## Externally adjustable shade

The Save Phace RFP E Series Ripped Welding Helmet, No. 3012442, from SFA Companies, features an externally adjustable shade 4/9-13 ADF welding lens with a 180-degree viewing area. The helmet offers easy on and off, grind mode, and sensitivity and delay control adjustments for most welding applications. The helmet has ultra sensitive, low amperage ADF triggering to switch to weld mold, and includes a replaceable ADF battery.

Circle 23 on card, or enter at "e-inquiry" on [VehicleServicePros.com](http://VehicleServicePros.com)





## Micro-USB rechargeable

The E-Z Red Rechargeable Slim Series Lights, No. PL175, generate 175 lm of flood light and 100 lm of beam light. The light is micro-USB rechargeable (cord included), and its slim design ensures trouble-free storage, according to the company. Run-time is three hours on flood and four hours on beam. An included magnetic pocket clip is designed to offer hands-free use.

**Circle 24 on card, or enter at "e-inquiry" on VehicleServicePros.com**

## Strategically placed utility pockets

Designed specifically for the automotive worker, the Dickies Multi-Pocket Performance Shop Pant delivers comfort and durability for any job around the shop. Strategically placed utility pockets were designed to keep tools close at hand while the ergonomic waistband allows bending and stretching. With StayDark technology and wrinkle-resistant fabric, this pant withstands the

demands of a hard day's work. Available in black and dark navy.

**Circle 25 on card, or enter at "e-inquiry" on VehicleServicePros.com**



## Quick and easy wheel installation

Ascot Supply Corporation's Wheel Bolt Pattern Gauge makes for quick and easy wheel installations. The wheel bolt pattern gauge includes many different bolt circle guides in millimeters and inches that measure both metric and standard sizes. It also includes lug centering adapters and a wheel stud gauge.

**Circle 26 on card, or enter at "e-inquiry" on VehicleServicePros.com**

## Includes one bent tool and one straight tool for versatility

The SP Tools Cummins Fuel Line Disconnect

Set, No. 13260, is a tool set designed to release fuel line connectors on the Cummins ISB and ISX engine family. It works on low-pressure lines around the engine and chassis, and it measures 0.250" thickness and includes one bent tool and one straight tool for versatility when servicing these engines.

**Circle 27 on card, or enter at "e-inquiry" on VehicleServicePros.com**



## Dual light fixtures

The Bayco SL-1530 LED Work Light has dual light fixtures that can be directed independently of each other, allowing users to position each fixture exactly where light is needed. The base unit can be removed easily from the 8' extendable tripod stand for low angle illumination. Each fixture has a durable, powdercoated tempered glass lens with a multi-fin heat sink design, keeping each fixture cool to the touch. The light has a 12' 18/3 SJTW cord for all-weather use and includes a one-year limited warranty.

**Circle 28 on card, or enter at "e-inquiry" on VehicleServicePros.com**

## Includes coverage for OBD I GM, Ford, Chrysler and Toyota vehicles

The OTC 3211 OBD I and OBD II scan tool includes coverage for OBD I GM, Ford, Chrysler and Toyota vehicles, as well as all 1996 and newer cars and light trucks. The 3211 is equipped with a CodeConnect database, complete with more than 26 million fixes for issues that are both vehicle- and code-specific. It also includes OBD I Cables for 1984-95 GM and Ford vehicles, as well as 1989-95 Chrysler and Toyota vehicles; OBD I live engine data for pre-1996 vehicles for faster vehicle diagnosis; and ABS and airbag code coverage for most domestic and Asian vehicles from 1996-2013. Other features include a color screen, oil light reset, dual PID graphing and battery life reset.

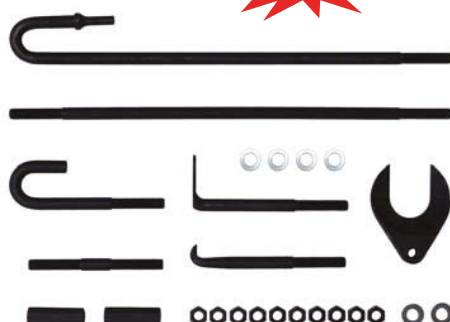
**Circle 29 on card, or enter at "e-inquiry" on VehicleServicePros.com**



## INNOVATIVE NEW PULLING TOOL

### LT855 TEXAS TWISTER AIR HAMMER PULLING KIT

- Now you can convert your air hammer into a pneumatic slide hammer with the Texas Twister
- Simply snap the Texas Twister curved air bit into the collet of your hammer with one of the bits attached and reverse the air hammer handle in your hand now using thumb to push the hammer trigger.
- Feel the 3000 air hammer blows per minute tuning into new pulling power
- One hand operation allows you to hold parts with your other hand
- Safe controlled part removal without parts and fluids crashing to the floor
- Utilize air hammer pulling power where slide hammers won't fit
- Extend the reach of the tool by using the 20" extension
- Use the double ended male 1/2-20 connector bar to connect the Texas Twister to your current pullers
- **TEXAS TWISTER** - safe, powerful, fast, simple effective air hammer bits you will use every day
- Comes packaged in a custom ballistic black nylon case
- **Patent Pending**



**NEW PRODUCT**



**We Make Good Ideas**

**LOCK TECHNOLOGY, INC.**  
Toll Free 800-421-7241  
www.ltitools.com  
ltitools@ltitools.com

Circle 30 on card, or enter at "e-inquiry" on VehicleServicePros.com

## New Products



### Offers 4,000-count backlit display

The Mac Tools Digital Multimeter, No. EM721, offers a 4,000-count backlit display. The multimeter features electric measure, advanced measure for sensor and actuators, temperature measure, true RMS and performs diode and continuity tests. It has a pulse width of 0.1 to 1,999.9 ms and is auto-ranging. It also has a min/max/average recording mode, an analog bar-graph, adjustable trigger mode and USB communication.

Circle 32 on card, or enter at "e-inquiry" on VehicleServicePros.com

## NEW PRODUCTS

### 89360 5 PIECES BODY FORMING PUNCH KIT



- These punches fit where your hammer will not
- Use to form curves, contours & radiuses
- 12" Overall length

### 18700 MASTER TERMINALS SERVICE KIT

- A complete 11 piece kit to crimp and release the most popular automotive specialized terminals



### 89450 & 89470 BODY REPAIR KITS

- Dedicated sets for aluminum body (89450 painted red) & steel (89470 painted blue) repair



### RETRACTABLE TEST LEADS REELS



Five models:

- 22800, 1 Lead x 30'
- 22810, 2 Leads x 30'
- 22820, 2 Leads x 30' with magnetic base
- 22830, 3 Leads x 10'
- 22840, 3 Leads x 10' with magnetic base



Scan with Smartphone to visit our website



Ask for our full line catalog



Celebrating our 46th year!

**TOOL AID**  
PROFESSIONAL AUTOMOTIVE TOOLS

43-53 EAST ALPINE STREET, NEWARK, NJ 07114  
1-800-888-2080 • www.toolaid.com

Circle 31 on card, or enter at "e-inquiry" on VehicleServicePros.com



### Leaves minimal residue on glass metal and fine finishes

The Brass Knuckle SmartCut Gloves, No. BKCR404, offer heavy duty cut protection, slip-resistance and no-smudge surface protection. The gloves are made from a high-quality, ultra-high-molecular-weight polyethylene fiber blend that allows dexterity and tactile sensitivity. The gloves provide ANSI cut level 4 protection without bulk and are coated with soft polyurethane over the palms and fingers to enhance grip. The coating on SmartCut gloves leaves minimal residue, even on glass, metal or fine finishes, according to the company.

Circle 33 on card, or enter at "e-inquiry" on VehicleServicePros.com





# ALL-NEW POWER PROBE 3 S

## OUR MOST POPULAR TOOL MADE EASY

LARGER, EASY TO READ SCREEN  
ERGONOMIC DESIGN FOR EASY HANDLING  
MENU DRIVEN SCREEN FOR EASY NAVIGATION

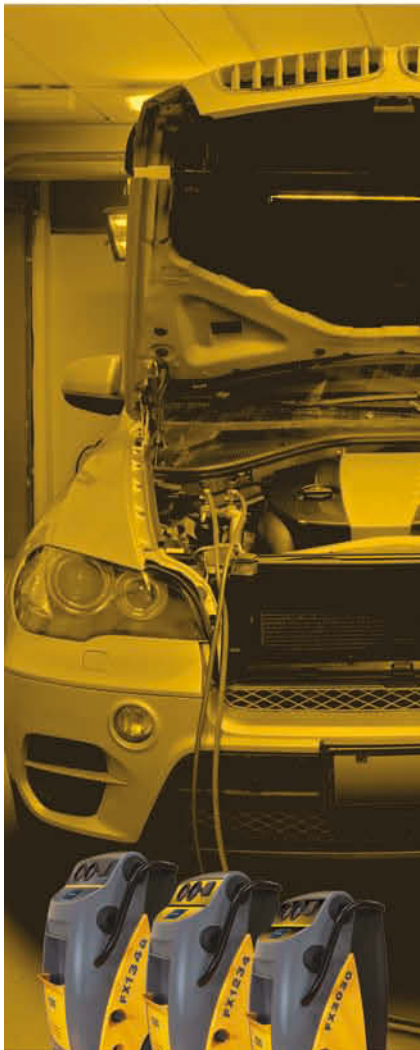
Circle 34 on card, or enter at "e-inquiry" on  
[VehicleServicePros.com](http://VehicleServicePros.com)

[WWW.POWERPROBETEK.COM](http://WWW.POWERPROBETEK.COM)

ALSO AVAILABLE IN OTHER COLORS!







## YOUR TRUSTED PARTNER REFRIGERANT MANAGEMENT FX SERIES

THE ONLY SAE CERTIFIED TRUE  
DUAL GAS UNIT ON THE MARKET

7" TOUCH SCREEN PANEL  
PROVIDES SIMPLE ON-SCREEN INSTRUCTIONS

PATENTED OIL-LESS  
COMPRESSOR  
FASTEST RECOVERY AVAILABLE

WARRANTY  
1 YEAR PARTS/LABOR 2 YEAR PARTS 5 YEAR COMPRESSOR

EQUIPMENT | TOOLS | CHEMICALS

FOR MORE INFORMATION CALL:  
(877) 776-8486

www.cpsproducts.com

CPS is a trademark of CPS Products, Inc.

Circle 35 on card, or enter at  
"e-inquiry" on VehicleServicePros.com



### Boost output by 15 percent

The K-Tool International air blow gun combines ambient air with compressed air to boost output by 15 percent. The blow gun has a heavy duty aluminum die cast for durability and conforms to OSHA standards for safety and noise. The air blow gun can be purchased alone or with a 1/2" rubber tip, a soft rubber star tip, a high-flow safety, a 4-pc interchangeable tip kit or an 8-pc interchangeable tip kit. All air blow guns include a one-year warranty.

Circle 36 on card, or enter at "e-inquiry" on  
VehicleServicePros.com

### Reliable performance in demanding environments

The JET Tools 60- and 80-gal air compressors offer reliable performance in the most demanding shop environments, according to the company. Each compressor has a built-in safety valve, high-pressure switch and a fully enclosed metal belt guard. The JET single-stage 60-gal compressor has a maximum air pressure of 135 psi. The three models in JET's two-stage, 80-gal compressor line have a maximum air pressure rating of 175 psi. Each compressor is CSA certified and covered by a three-year warranty.

Circle 37 on card, or enter at "e-inquiry" on  
VehicleServicePros.com



### Meets new U.S. environmental concerns and regulations

The Goodson Tools Honing Oils and Coolants line now offers Sunnen's Mineral Based Honing Oil (No. MAN-845), Honing Oil Concentrate (No. MAN-C), Mineral Based Multi-Purpose Honing Oil (No. MB-30), Water Based Honing Coolant Concentrate (No. SSC-205) and Vegetable-Based Honing Oil (No. SHO-500). These new coolants will help engine builders meet new U.S. environmental concerns and regulations.

Circle 38 on card, or enter at "e-inquiry" on  
VehicleServicePros.com



### Integrated TPMS sensor testing and activation

The Bartec USA Tech200Pro offers integrated TPMS sensor testing and activation, with tread depth measurement, as well as tire pressure checking. A standalone device, the Tech200Pro comes with a wall-mounted inductive charger, quick-connect air fitting and operates without the need of any other devices. The Tech200Pro has full TPMS sensor capability, which allows the user to test sensor function, status, fitment and pressure. Tread depth measuring is very accurate at +/- 0.1mm, and can measure tread up to 22mm (almost 7/8").

Circle 39 on card, or enter at "e-inquiry" on VehicleServicePros.com





## New Products

### Reduces collet marks

The **Huth Ben Pearson Dead Stop Swaging Positioning System** makes swaging (expanding, reducing, shaping) repeated tube and pipe-based parts quicker and easier. To use, attach the system to the back end of the swage box on a Huth pipe bender or 1673 expander-reducer machine. Then, set the stop location with the positioning pins and use the adjustable screw thread to fine-tune their setup. It reduces collet marks. The Dead Stop can be purchased with a Huth pipe bender or model 1673 expander reducer, or purchased alone.

Circle 40 on card, or enter at "e-inquiry" on [VehicleServicePros.com](http://VehicleServicePros.com)



### Internal 90-degree bevel gear

The **Beta Tools Angular Screwdriver**, No. 1439/K7, is mainly intended to adjust carburetors, but the seven interchangeable blades and bits that come in the case allow it to be adaptable to other applications. The 19" lightweight, aluminum screwdriver has an internal 90-degree bevel gear and a 32mm head that allows it to reach idle mixture screws. The 1439/K7 features a side grip handle that fits any position on the shaft and a 1/4" hex drive bevel head with bit retaining spring.

Circle 41 on card, or enter at "e-inquiry" on [VehicleServicePros.com](http://VehicleServicePros.com)



### Pairs with ArcOne Vision welding helmets

The **ArcOne X540V auto-darkening filter** has a light shade of 4, dark shade of 9-13, grind and delay, TIG rating of 10, four sensors and the company's patented Xtreme viewing area of 12.6". The X540V filter pairs with any of ArcOne's Vision welding helmets.

Circle 42 on card, or enter at "e-inquiry" on [VehicleServicePros.com](http://VehicleServicePros.com)

### Features multiple gripping zones

The **Knipex Tools 11" Extra Long Needle Nose Pliers** are designed for strong and flexible gripping of small pipes, screws and round parts in hard-to-reach areas. The Extra Long Needle Nose Pliers feature multiple gripping zones for pulling and twisting. Workpieces can be carefully grabbed, held and guided with the four grooves in the jaws of the pliers. Other features include a serrated gripping area for holding onto round parts or pipes and a slim, extra-long design ideal for use in limited working space. The pliers are forged, oil-hardened and tempered from German tool steel with handles that come with a non-slip plastic coating. The Extra Long Needle Nose Pliers have 2.25" gripping capacity and are available with straight jaws or a 45-degree angled jaw for added versatility.

Circle 43 on card, or enter at "e-inquiry" on [VehicleServicePros.com](http://VehicleServicePros.com)



**DO IT ONCE.  
DO IT RIGHT.  
BUY A MOHAWK!**

**LIFTS THAT LAST  
A LIFETIME**



### TWO POST LIFTS

7,000 through 30,000 lb. capacities with 25 year structural warranty. **Inquiry #10**



### STORAGE LIFTS

10,000 through 18,000 lb. capacities for storage and vehicle service. **Inquiry #11**



### MOBILE COLUMN LIFTS

MP-Series electric-hydraulic mobile lifts available in 2, 4, 6, or 8 post configurations. **Inquiry #12**



### FOUR POST RUNWAY LIFTS

19,000 through 120,000 lb. capacity models give complete under vehicle access. **Inquiry #13**



**www.mohawklifts.com**

Phone: 518-842-1431 • Fax: 518-842-1289

**1-800-833-2006**

Circle 44 on card, or enter at "e-inquiry" on [VehicleServicePros.com](http://VehicleServicePros.com)

# MAL TOOLS

**BLSPEC**  
BRUSHLESS MOTOR  
POWERED FOR PRODUCTIVITY.  
DESIGNED FOR AUTOMOTIVE.



**MCF891**  
**20V MAX\* 3/8" DRIVE**  
**BRUSHLESS IMPACT WRENCH**

## BENEFITS OF BRUSHLESS

POWERFUL MOTOR - COMPACT DESIGN  
LONGER RUNTIME ON A SINGLE CHARGE  
NO BRUSHES TO REPLACE



**MCF886**  
**20V MAX\* 1/4" HEX**  
**BRUSHLESS IMPACT DRIVER**

**Contact Your Distributor  
or visit MACTOOLS.COM**

\*Maximum initial battery voltage (measured without a workload) is 20 or 12 volts. Measured under a workload, nominal voltage is 18 or 10.8

**Circle 45 on card, or enter at  
"e-inquiry" on VehicleServicePros.com**

## New Products

### Stick, clamp, hang or carry

The Milwaukee Tool M12 Rover LED Compact Flood Lights' compact size paired with its integrated hanging features allow it to stick, clamp, hang or be carried in multiple orientations, on almost anything. The flood light has integrated magnets for metal studs, I-beams and job boxes, and spring loaded clamps for wood studs, scissor lifts, ladders and job carts. This compact light, with 1,000 lm of light, has a run-time of up to 15 hours and survives 9' drops.



**Circle 46 on card, or enter at "e-inquiry" on VehicleServicePros.com**

### As quiet as a dishwasher

The Ingersoll Rand R4-11kW compressor is a workplace compressor, with a 20 percent reduction in footprint and sound levels as quiet as a dishwasher, according to the company. The compressor features V-Shield technology that reduces leak path and connections by more than 15 percent. The large digital output display supports easy programming and operation. The new R4-11kW compressors are available in 4-11kW (5-15hp) with flows 8.1cfm – 57.5cfm and pressures up to 200psig on fixed speed units and 145psig on variable speed drives.



**Circle 47 on card, or enter at "e-inquiry" on  
VehicleServicePros.com**



### Designed to be functional and easy to clean

The Bear Ops Bold Action V offers smooth operation with a recessed button for blade opening, according to the company. The green and black G10 handle is designed to be functional, comfortable and easy to clean. The knife features an ergonomic safety slide and pocket clip. The Bold Action V is available in a bead finish or black finish blade.

**Circle 48 on card, or enter at "e-inquiry" on  
VehicleServicePros.com**

### Eliminates need for different size adapters

The Cal-Van Tools Adjustable Bearing Seal Driver, No. 506, eliminates the need for a driver and different size adapters.

The durable, aluminum constructed tool comes equipped with a steel-capped striker shaft handle. The three-stepped jaws adjust to accommodate bearing races and and seals from 0.708" to 3.543", while the locking screw holds the adjustable jaws in place for one-handed use.

**Circle 49 on card, or enter at "e-inquiry" on  
VehicleServicePros.com**



### Flexible, yet durable, hand protection

The Galetton Resist ANSI Cut Level 5 Seamless Knit Gloves offer flexible yet durable hand protection. These heavy duty black gloves are constructed from a blend of polyester entwined with steel wires. The black color will appear clean longer, according to the company. These gloves are available uncoated or with crinkle latex coated palms for enhanced gripping ability.

**Circle 50 on card, or enter at "e-inquiry" on  
VehicleServicePros.com**





# NACE automechanika CHICAGO

America's leading international trade fair for the automotive service industry targeting trade visitors from the US & Canada



Exhibition: July 26-28, 2017

Training: July 27-29, 2017

McCormick Place West, Chicago, IL

## DISCOVER THE LATEST ADVANCEMENTS AND TECHNOLOGY ALL UNDER ONE ROOF

Explore **CUTTING-EDGE EQUIPMENT** from more than 600 exhibitors!

Find all the latest tools to **BOOST SHOP EFFICIENCY!**

Expand your skill set at more than 100 **FREE TRAINING** sessions!



[www.NACEAutomechanika.com](http://www.NACEAutomechanika.com) | [www.NACEAutomechanika.com/register](http://www.NACEAutomechanika.com/register)

AFTERMARKET  
BUSINESS **WORLD**

*Motor Age*

Circle 51 on card, or enter at "e-inquiry" on [VehicleServicePros.com](http://VehicleServicePros.com)



messe frankfurt



## Easily remove brake anchor pins and bushings

The **Tiger Tool Brake Anchor Pin Press**, No. 16002, allows users to easily remove brake anchor pins and bushings on virtually all 16-1/2" S-cam trailer and tractor "Q" brake systems in minutes. The compact design ensures the job can be completed more efficiently without the removal of the hub assembly, according to the company. Manufactured from high-grade steel for strength and durability, the rigid C-frame can endure up to 10 tons of force.



Circle 52 on card, or enter at "e-inquiry" on [VehicleServicePros.com](http://VehicleServicePros.com)

## Designed to cut through the hardest materials

ProMaxx Tool's SSSC Gold, Platinum and Platinum Plus drill bit line is designed to cut through even the hardest of materials, including stainless steel, boron, ultra-high-strength steel, titanium and hardened steel. The drill bits are engine turned to close tolerances for precision and challenging applications like those found in exhaust manifold repairs, body and machine shops. The drill bits are micro-edged to prevent walking, thin webbed and have high-degree primary and secondary relief cutting edges for speed, accuracy and temperature control.



Circle 53 on card, or enter at "e-inquiry" on [VehicleServicePros.com](http://VehicleServicePros.com)



## Weighs less than 5 lbs

The **AllStart Boost Ultra Jump Starter**, No. 590, is a light, compact 12V vehicle jump starter and backup charger. The unit weighs less than 5 lbs. The jump starter works on most gas engines - including V10s - and diesel pickups. The Boost Ultra offers 800 cranking amps and 1,800 peak amps.

Circle 54 on card, or enter at "e-inquiry" on [VehicleServicePros.com](http://VehicleServicePros.com)

### SP-7231 FLEX HEAD CUT-OFF TOOL

**MADE IN JAPAN**

**3-POSITION FLEX HEAD**

UP!

DOWN!!

Disc Size	: 3"
Free Speed	: 18,000 rpm
Length	: 8.6"
Weight	: 2.6 lbs.
Required Air Pressure	: 90 PSI
Average Air Consumption	: 4 CFM
Air Inlet Size	: 1/4"-NPT

### SP-7610 RECIPRO SAW [Gear Type]

**MADE IN JAPAN**

**Tool Cutaway**

Gear

Air Motor

**7610-200 Edge Blade**

(OPTION) Set of 10pcs.

Strongly recommended for maximum performance.

Strokes per Minute	: 5,300
Stroke	: 0.47"
Length	: 8.15"
Weight	: 1.3 lbs.
Required Air Pressure	: 90 PSI
Average Air Consumption	: 2.7 CFM
Air Inlet Size	: 1/4"-NPT

SP AIR USA, Inc.  
1571 Westbelt Drive  
Columbus, OH 43228-3829

Toll Free 855-438-5313  
Phone 614-529-6500  
FAX: 614-529-6700

E-Mail: [sales@spairusa.com](mailto:sales@spairusa.com)  
URL: <http://www.spairusa.com/>

Circle 55 on card, or enter at "e-inquiry" on [VehicleServicePros.com](http://VehicleServicePros.com)





## MTN4044 4 Piece Dead Blow Hammer Set



**Includes:**  
2 lb. Dead  
Blow Hammer



**NON-MARRING  
SURFACES**

Visit us at

**ToolWEB.com**

for more



**German Engineering  
Italian Flair  
American Passion**

Circle 56 on card, or enter at "e-inquiry" on [VehicleServicePros.com](http://VehicleServicePros.com)

**Offering High Quality  
Tire Service Equipment**



HOFHM-TWEV0



HOFHM-10825

For more product information call 1.800.640.8303 or visit us at [hofmann-megaplan-usa.com](http://hofmann-megaplan-usa.com)

**QuickFlow**

# DRILL PUMP

Part No: 71196

MAKE FLUID  
TRANSFER  
GREAT AGAIN



CONVERT YOUR  
CORDLESS DRILL  
INTO A PUMP  
TO TRANSFER  
MOST ALL FLUID  
TYPES USED IN

- Automotive
- Industrial
- Marine
- Domestic



\* Not approved for use with flammable liquids.



**FOR THE MOST INNOVATIVE  
TOOLS THAT TECHS DEMAND**

Check it out now!

**PBT USA**  
www.pbtusa.com



Circle 57 on card, or enter at  
"e-inquiry" on VehicleServicePros.com

## New Products

### Has seven-day and 24-hour timers

The ATEC Trans-Tool Signature Series Stainless Steel Parts Washer offers a high-quality 403 SS cabinet shell, a 43" interior working height and a 30" direct drive turntable. The washer also has an SS Oil Skimmer, a 3HP gusher pump and low float. It has seven-day and 24-hour timers, 9KW heaters and 18 SS high pressure spray nozzles. This parts washer is UL certified.

Circle 58 on card, or enter at "e-inquiry"  
on VehicleServicePros.com



### Measures surface temperatures without contact

The Beta Tools Digital Infrared Thermometer with Laser Aiming System, No. 1760/IR800, offers infrared measurements at the touch of a button. The built-in laser pointer increases target accuracy, and the backlight LCD and push-buttons allow for convenient operation. The thermometer can be used to measure the surface temperature of objects that cannot be measured by contact thermometers. It features automatic data hold, digitally adjustable emissivity and max temperature displays.

Circle 59 on card, or enter at "e-inquiry" on VehicleServicePros.com

### Conveniently mounted hand controls

The Vanair Manufacturing FST3000 Jump Starter offers 3,000A of power and a 240A alternator that is powerful enough to start both 12V and 24V batteries in seconds. The FST3000 is encased in a heavy duty, weather-protected enclosure and features conveniently mounted hand controls on the outside of the unit for easy operation. The unit includes a 30' 3/0 polar grade boost cable.

Circle 60 on card, or enter at "e-inquiry" on VehicleServicePros.com



### Removes rust and debris



The Ken-Tool Rust Hog, No. 20167, is an abrasive tool that removes surface rust and debris on studs and flat mating surfaces of wheels, wheel hubs and brake rotor hats. The Rust Hog features a dense, aluminum oxide infused polypropylene abrasive material attached to a 4" hub used with a 1/2" drive electric or pneumatic impact tool. The body is 4.25" long, the abrasive pads have a 2" diameter and the center hole is 2.25" deep. The Rust Hog is safe to use on steel, magnesium and alloy wheels.

Circle 61 on card, or enter at "e-inquiry" on VehicleServicePros.com

### Extra-long handles and flexible heads

The Monster 5-pc Reversible Ratcheting Wrench Set, No. MSTDBM10, offers extra-long handles and flexible heads. The 90-tooth head and built-in reverse mechanism help remove fasteners in hard-to-reach areas. The set includes 8x10mm, 12x14mm, 13x15mm, 16x18mm and 17x19mm wrenches. Also available in a 2-pc set (No. MSTDBM4) that includes size 21x22mm and 24x25mm wrenches.

Circle 62 on card, or enter at "e-inquiry" on VehicleServicePros.com







# ELIMINATOR

INLINE UNDERCOAT AND DECAL REMOVER

## DF-700DX



**FAST REMOVAL**  
Decals and stickers



**STRIPS IN SECONDS**  
Paint, rust, seam  
sealer, and gaskets



[WWW.DENTFIX.COM](http://WWW.DENTFIX.COM)

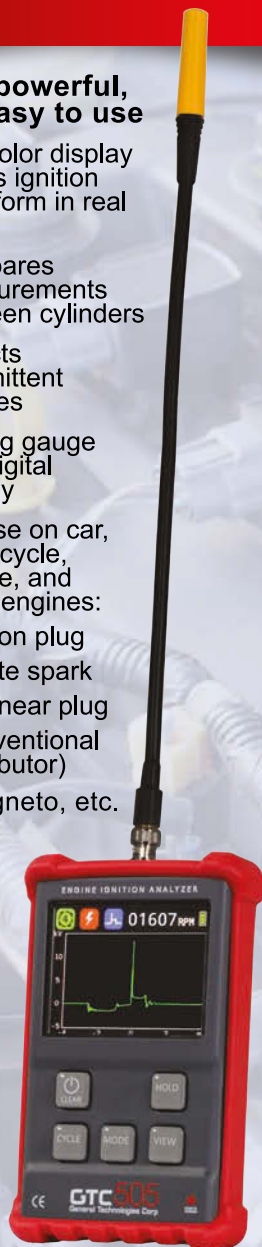
Circle 63 on card, or enter at "e-inquiry" on VehicleServicePros.com

# GTC505

## Engine Ignition Analyzer

**Quick, powerful, and easy to use**

- 3.5" color display shows ignition waveform in real time
- Compares measurements between cylinders
- Detects intermittent misfires
- Analog gauge and digital display
- For use on car, motorcycle, marine, and small engines:
  - coil on plug
  - waste spark
  - coil near plug
  - conventional (distributor)
  - magneto, etc.



To watch a demo video online and for more information visit

**www.gtc.ca**  
or call us toll free  
**1-800-440-5582**

GTC, V Ready and FaultFinder are trademarks of General Technologies Corp. © 2017 General Technologies Corp

**Circle 64 on card, or enter at "e-inquiry" on VehicleServicePros.com**

## New Products



### Features three adjustable elastic straps for a custom fit

The Cat® Products Multi-Function Headlamp, No. CT4120, is lightweight and features three adjustable elastic straps for a custom fit. A touch of the power button provides a 250 lm spotlight, with a beam distance of 40m. The next press of the power button switches the light to a 120 lm COB LED flood light, brightly illuminating the surroundings or work area. A third press of the button switches the light to a red COB LED. The CT4120 also offers a rear flasher for safety. Powered by three AAA batteries that are included, the headlamp provides hours of hands-free lighting.

**Circle 65 on card, or enter at "e-inquiry" on VehicleServicePros.com**



### Dual purpose hook and tilt design

The Optima Digital 400 12V Performance Maintainer and Battery Charger features Optima's built-in battery mode to maximize battery life and performance. The Digital 400 offers a backlit LED/LCD display for charging, LED indicators for easy selection of charge and a cable wrap body and reusable cord tie for easy storage. It also has a dual purpose hook and tilt design that allows for in-vehicle hanging or angled standard viewing.

**Circle 66 on card, or enter at "e-inquiry" on VehicleServicePros.com**

### Dyes fluoresce brightly under UV light

The Tracer UV Multi-Colored Fluid Dye Kit, No. TP-8693HD, provides mechanics with a set of dyes that fluoresce brightly when exposed to ultraviolet light. The kit includes three color-coded dyes for petroleum and synthetic-based fluids: white dye, yellow dye and blue dye. The kit also includes a green fluorescent dye for conventional coolant. The TP-8695 has a range of 20' and is capable of detecting leak sites in a large vehicle's system.

**Circle 67 on card, or enter at "e-inquiry" on VehicleServicePros.com**



### Low-pressure rubber hoses

Reelcraft's High Operating Temperature Hose Reels offer low-pressure rubber hoses for more extreme air temperature applications. All of the reels are rated for air temperatures ranging from -40 degrees F (-40 degrees C) to 212 degrees F (100 degrees C). These spring-driven hose reels are ideal for use with portable compressors that operate at high temperatures and high volumes of continuous air.

**Circle 68 on card, or enter at "e-inquiry" on VehicleServicePros.com**





# DELIGHTFULLY SOUND-FREE



Model# RS7580H-603

**MSRP: \$4250\***



Engineered for high performance, efficiency and reliability, BendPak's Hush-Quiet RS7580H-603 rotary screw air compressor can meet the compressed air demands of high volume tire shops, general maintenance and fleet shops, vehicle body and paint facilities or busy automotive dealerships. Our exclusive Hush-Quiet technology makes it the perfect compressor to install in noise conscious service areas.

**For more info visit [www.bendpak.com/hushquiet](http://www.bendpak.com/hushquiet) or call 1-805-933-9970**

**Circle 69 on card, or enter at "e-inquiry" on [VehicleServicePros.com](http://VehicleServicePros.com)**

\*Valid at participating dealers. Prices subject to change after June 30, 2017.

© 2016 BendPak, Inc • BendPak, Inc is a registered trademark.



# ***This is my BendPak***



***There are many,  
But this one's mine.***

*"Here at Kindig-it Design we specialize  
in Bitchin' Rides and that takes killer  
equipment, that's why we use BendPak"*

- Dave Kindig, Accomplished Designer  
specialized in Hot Rod Customs, Owner of  
Kindig-it Design and star of TV's "Bitchin' Rides"  
[www.kindigit.com](http://www.kindigit.com)

Circle 70 on card, or enter at "e-inquiry" on [VehicleServicePros.com](http://VehicleServicePros.com)

© 2016 BendPak, Inc • BendPak, Inc is a registered trademark.

**BP BendPak**

For more information on BendPak's entire product line,  
call 1-800-253-2363 or visit [www.bendpak.com](http://www.bendpak.com)



## Low maintenance solution with 500-lb load capacity

The Renegade TMB 4000 Manual Parts Washer for heavy duty applications is a low-maintenance solution for a variety grease-busting operations, according to the company. The washer features an adjustable fountain nozzle, 1/2" polyethylene construction, heavy duty casters, a 20-gal holding tank, an adjustable thermostat and a power gun with splash hood. The washer has a 500-lb load capacity. Made in the U.S.A.

**Circle 71 on card, or enter at "e-inquiry" on VehicleServicePros.com**



## A size for most projects

The Cornwell 21-pc Angled Wrench Set, No. WAP21S, offers a size for most projects and tight spaces. The sizes include: 1/4", 5/16", 3/8", 7/16", 1/2", 9/16", 5/8", 11/16", 3/4", 13/16", 7/8", 15/16", 1", 1-1/16", 1-1/8", 1-3/16", 1-1/4", 1-5/16", 1-3/8", 1-7/16", 1-1/2". Each piece is completed with a chrome and polished finish.

**Circle 72 on card, or enter at "e-inquiry" on VehicleServicePros.com**



## Brand-specific coverage for more than 50 makes

Injectronic's Professional OBDII Scan Tool and Oscilloscope, No. CJ4-R, includes global OBDII and brand-specific coverage for more than 50 popular automotive makes.

The CJ4-R is integrated with a two-channel oscilloscope and labscope. It also has a Bluetooth wireless communication channel that can display diagnostic results on a smartphone or tablet. The CJ4-R is built to withstand extreme temperatures and moderate impacts. This tool includes free updates for two years and a two-year warranty.

**Circle 73 on card, or enter at "e-inquiry" on VehicleServicePros.com**



**COAST**  
LIGHTS • KNIVES • MULTI-TOOLS

**POLYSTEEL 600R**

TWIST FOCUS

DUAL POWER  
LI-ION or ALKALINE

CHARGE IN  
OR  
POWER OUT

**WATERPROOF  
RECHARGEABLE ALWAYS READY**

FLEX CHARGE DUAL POWER

NOW WITH EXTERNAL DEVICE CHARGING

SEE IN ACTION AT [COASTPORTLAND.COM/POLYSTEEL600R](http://COASTPORTLAND.COM/POLYSTEEL600R)

**Circle 74 on card, or enter at "e-inquiry" on VehicleServicePros.com**

## Reduced weight, noise and vibration

The **Florida Pneumatic Aircat Lubrication Free Sanders** offer reduced weight, noise and vibration along with extended tool life. The smooth design throttle lever and ergonomic grip provide maximum comfort. The line offers



a choice of fifteen models with 3/32" and 3/16" orbit options, along with non-vacuum, central vacuum and self-vacuum

options. The patented double-sealed, lubrication-free motor prevents dust contamination of the air motor, eliminating the need for oiling.

**Circle 75 on card, or enter at "e-inquiry" on VehicleServicePros.com**

## Easily wick solder into the wires

The **TG Products Solder Tool**, No. ST101, is a complete soldering clamp. The patent-pending design has two attachments for holding and dispensing solder to the wires prior to soldering. By pre-feeding the solder before clamping the wire, technicians can easily wick the solder into the wires without dripping, according to the company. The solder dispensing attachments will hold a 3/4" spool or a 5/8" tube of solder and can mount on either side of the clamp base.



**Circle 76 on card, or enter at "e-inquiry" on VehicleServicePros.com**

## Offers one-handed height adjustment

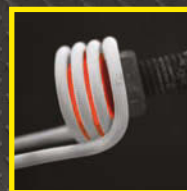
**Snap-on's Flat-Oval Adjustable Heavy Duty Creeper**, No. JCW77, offers one-handed height adjustment designed to make changing the creeper position quick and easy. The creeper has a four-position headrest for a better visual field, and also features flat-oval tubing construction that eliminates sharp corners on the frame. The 4" casters on the base offer 1-3/8" ground clearance. JCW77 has a 13" wide deck with a solid plywood core, and is topped with a high-density foam padding and a heavy duty vinyl cover. Available in black or red.



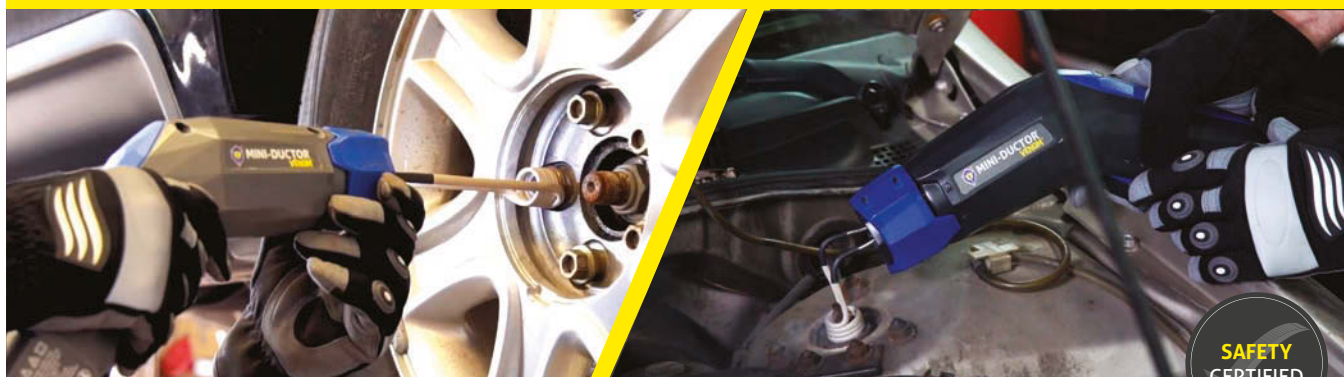
## GO FLAMELESS WITH INDUCTION HEAT!

The **Mini-Ductor® VENOM™** releases metals from corrosion and thread lock compounds without the dangers of open flame.

- > Coil Twist Lock
- > User Controlled LED Switch
- > Fault Override Delay
- > Angled Design with Trigger
- > Two Year Warranty



**877-934-9232 | www.theinductor.com**



**SAFETY  
CERTIFIED**

**Faster and safer than a torch!**

**Circle 77 on card, or enter at "e-inquiry" on VehicleServicePros.com**







## Re-install tie rods without removing rack and pinion

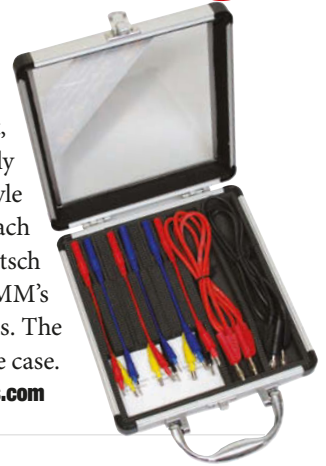
The OEM Tools Master Inner Tie Rod Tool Set allows users to remove and re-install tie rods without removing the rack and pinion. The set includes SAE and metric adapters for a variety of make and model vehicles, including larger tie rods found on many trucks and SUVs. The 1/2" drive tube makes removing and re-installing to the proper torque easy. The set includes 12 nickel-plated crow-foot style adapters: 1-3/16", 1-1/4", 1-3/8", 1-7/16", 1-1/2", 29mm, 32.5mm, 33.6mm, 38.4mm, 40mm and 42mm. The set comes in a sturdy blow molded case.

Circle 78 on card, or enter at "e-inquiry" on VehicleServicePros.com

## Features a selection of terminal adapter sets

The Electronic Specialties 14-pc Deutsch Test Connector Kit, No. 148, features a selection of terminal adapter sets specifically fitted for diagnostic testing and connections into Deutsch style connectors. The kit includes size 14, 16 and 20 adapters. Each adapter is fitted with the wire gauge corresponding to the Deutsch connector size and current rating. The adapters connect to DMM's and scopes with included 48" stacking banana plug test leads. The kit has a total of 14 pieces packaged in a clear window storage case.

Circle 79 on card, or enter at "e-inquiry" on VehicleServicePros.com



## Offers versatility to shops

Mohawk Lifts' Turf Kit with Dual Trough Accessory offers versatility to shops and facilities that need to surface cars, trucks and turf equipment without dedicating a service bay and lift to just one type of equipment. The turf kit has a 6,000-lb capacity and can be used on Mohawk 10,000- to 18,000-lb two-post lifts, including lift models with optional three-stage arms.

Circle 80 on card, or enter at "e-inquiry" on VehicleServicePros.com

# IT'S STILL WINTER. DON'T FORGET YOUR FEET!



**LAWMAN**



**SUPER V6**



**YUKON**  
Also available in black.



**CHASSIS**  
Only available in composite toe.

**FOR MORE INFORMATION OR TO ORDER  
PLEASE CONTACT YOUR PARTICIPATING SNAP-ON FRANCHISEE**



OFFICIAL  
LICENSED  
PRODUCT

Snap-on and Wrench "S" are trademarks of Snap-on Incorporated and used under license. All other marks are trademarks of their respective holders. ©2017 Snap-on Incorporated. Printed in U.S.A. [www.snapon.com](http://www.snapon.com)

**Snap-on**

Circle 81 on card, or enter at "e-inquiry" on VehicleServicePros.com

# The HOOK

By **POWER PROBE**

**DELIVERS  
UP TO  
100 AMPS**

**EASY!  
SMART!  
POWERFUL!**

- ▶ Powers Up Components
- ▶ Measures Current Draw
- ▶ Calculates Resistance

**All At The Same Time  
In One Diagnostic Tool!**

**WORKS ON 12-48  
VDC SYSTEMS**

## Kit Includes:

- Power Probe Hook Unit
- Detachable 4mm Banana Jack
- 36" Connector Lead **NEW**
- 4mm Back Probe Adapter **NEW**
- Battery Hook-Up Clips
- 3 Wire Continuity Leads
- 20 amp Fuse
- Instructional Manual & DVD

**Part # PPH1**

## The World's Finest BRAKE BLEEDER ADAPTERS

Exclusively From

**POWER PROBE**

**PART # BAKIT01**

## CUSTOM FIT MASTER CYLINDER ADAPTERS

**The Master Kit Combines The Best  
Combination Of Adapters For The  
Widest Coverage Of Your Vehicles!**

- ☑ Color Coded Anodized Aluminum Caps for Easy Recognition
- ☑ Standard Brass Fittings Ensures Compatibility with All Styles of Brake Bleeders
- ☑ Eliminates Hassles With Air Hoses and Shop Air
- ☑ Expandable O-Rings Guarantees a Leak-Proof Seal Every Time
- ☑ Twist Top Knob to Expand O-Ring & Tighten the Cap
- ☑ Quick and Easy Installation
- ☑ Covers All Makes and Models of Vehicles

**POWER PROBE**

The Ultimate Automotive Circuit Tester

800-655-3585 [www.powerprobe.com](http://www.powerprobe.com)

Circle 82 on card, or enter at  
"e-inquiry" on VehicleServicePros.com

# New Products

## Find faulty connections in the electric line

The Mac Tools Automotive Tester, No. EM112, is designed to immediately find faulty connections in the electric line. The tool features a PWM / MLI signal detector that automatically indicates when measuring a square signal used to command idle actuator, turbo wastage, EGR and Canister valve. Users can measure resistance up to 40 megaohms when testing an ignition coil, and the tool's line test detects faulty connections in electric circuits. The tool can measure up to 49V in the DC current range.

Circle 83 on card, or enter at "e-inquiry" on  
[VehicleServicePros.com](http://VehicleServicePros.com)



## Lightweight, compact, hands-free area light

The Streamlight Bandit USB Headlamp offers a lightweight, compact, hands-free area light that is USB rechargeable. The low-profile headlamp offers 180 lm on high and a run-time of 9.5 hours on low. The large top button allows for easy switching between the light's high, low and flash modes. The Bandit features a polycarbonate body and lens, weighs 1.3 oz with the attached headband, and is 2.7" long. The light is IPX4 rated weather-resistant and impact-resistant to 2m. Available in safety yellow or black.

Circle 84 on card, or enter at "e-inquiry" on  
[VehicleServicePros.com](http://VehicleServicePros.com)



## Self-healing film

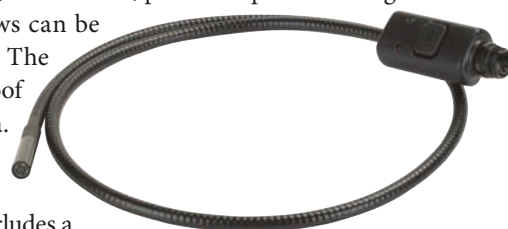
The Llumar Platinum Paint Protection Film from Eastman Chemical Company is a self-healing film that shields the user's vehicle finish against rocks, road debris, winter salt and sand. The clear coat finish with Hydrogard technology offers a water-resistant surface for increased durability. The film is backed by a 10-year limited warranty.

Circle 85 on card, or enter at "e-inquiry" on  
[VehicleServicePros.com](http://VehicleServicePros.com)

## Provides up to a 270-degree view

Actron's Dual Plane Camera Adapter, No. CP3883, provides up to a 270-degree view with an inline and side camera. Views can be changed with a push-button switch. The adapter features a 3' flexible waterproof camera tube with a 9mm 2-D camera. When attached to the Actron 7669 video inspection scope, the adapter's camera is displayed on a 2.4" LCD screen and includes a high-intensity white LED light for dim locations.

Circle 86 on card, or enter at "e-inquiry" on [VehicleServicePros.com](http://VehicleServicePros.com)





## New Products



### Fits in limited space applications

The Hennessy Coats RC Series Rim Clamp Tire Changer, No. RC-55, offers a small space footprint, so it easily fits into limited space applications. The easy-to-read gauge accurately displays tire pressure and includes a damage-resistant Lexan faceplate.

The manual swing arm is easily adjustable, reducing the risk of damage when mounting and demounting the tire.

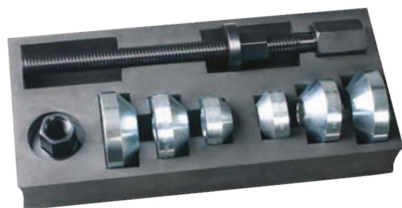
**Circle 87 on card, or enter at "e-inquiry" on VehicleServicePros.com**



### 10' drop rating

The Klein Tools Inspection Penlight with Laser features a glowing ring tip that charges while the light is on and allows for easy retrieval in the dark. The LED penlight works well for up-close lighting in dim areas, while the laser pointer pinpoints objects that are out of reach. The light is a durable, IP54 dust- and water-resistant tool with a 10' drop rating.

**Circle 88 on card, or enter at "e-inquiry" on VehicleServicePros.com**



### Removes wheel bearings

The Mueller-Kueps Twin Cone Wheel Bearing Kit, No. 423005, removes wheel bearings. The cone goes through the center of the bearing, then locks in place with a spindle and two nuts. Using a slide hammer, technicians can then remove the wheel bearing. The kit contains two sets of three cones in various sizes.

**Circle 89 on card, or enter at "e-inquiry" on VehicleServicePros.com**

*Lisle*

## NEW TOOLS



69700 Adapters



69900 Adapters



### 69700 69900 TURBO AIR SYSTEM TEST KITS

Helps locate air leaks in turbo system components by plugging the output side of the turbo and the intake inlet. Air is applied through one adapter to show the presence of leaks within the system. Features a pressure gauge, shut off valve and pressure regulator and includes pairs of stepped adapters to fit most turbo systems on Class 7 and 8 trucks. Can also be used on some cooling system hoses.



### 32860 DOOR HANDLE SPRING RETAINER TOOL FOR GM

Allows outer door handle replacement without removal of the interior door panel. Designed to prevent damage to the door components and finish. Works on 2014 and newer Yukon, Tahoe, Suburban, Silverado, Sierra, Impala and Escalade.



### 89900 89910 89920 MECHANICS GLOVES

A mechanics glove with extended life, non-padded, single layer palm and tough expandable top material. Hidden seam design and elastic cuff, with hook and loop fastener, for comfort. Touch screen compatible design for use with many smart phones, tablets and touch screen computers. Sizes: M, L, XL.



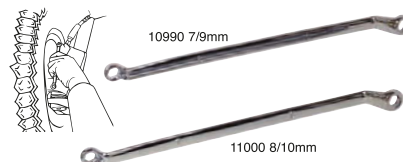
### 89950 89960 89970 HEAVY DUTY IMPACT GLOVES

A heavy duty impact glove with gel palm padding and molded knuckle protection. Gel palm padding to help absorb vibration from impact and power tools. Extra protection molded on glove back and fingers. Hidden seam design and elastic cuff, with hook and loop fastener, for comfort. Touch screen compatible for use with many smart phones, tablets and touch screen computers. Sizes: M, L, XL.



### 52600 ABRASIVE PAD SCRAPER

The 30° angle of the tool provides extra leverage when cleaning gasket surfaces. Pad wraps around the end of the tool to reach into tight corners and can be repositioned on the tool as it wears. Comes with three easily replaceable 1" x 4" medium grit pads.



### 10990 11000 BRAKE BLEEDER WRENCH (7/9mm & 8/10mm)

For bleeding air from brake cylinders with 7mm & 9mm / 8mm & 10mm bleeder screws. Double ended tools are offset for easy access to hard-to-reach bleeder screws.



### 68500 MANIFOLD DRILL TEMPLATE FOR FORD 2V & 3V

Designed to help remove broken exhaust manifold studs on 4.6L, 5.4L 2 valve, 5.4L 3 valve and 6.8L V10 Ford engines without damaging the block. Interchangeable plates center drill on the broken stud. Depth gauge for drilling is marked on the template. Extractor is then used to remove the broken stud.



### 65150 FLEXIBLE BACK PROBES

Flexible silicone probe bends for hard-to-reach areas. Great for harness connectors and sensor wiring. No need to disconnect the terminal and connector. The probes are fully insulated which provide added protection and come with standard 4mm female banana plug connections. For use up to 30 volts.



### 41080 41090 45° & 90° TRIM CLIP PLIERS

Easily removes trim panel fasteners. Double tapered tips slide under the clip and grip the side of the clip, helping prevent damage. Tips are angled 45° & 90° providing more leverage for easier clip removal. Dual durometer cushioned grips for comfort.



### 42480 PANEL CLIP PLIERS

Pliers provide extra leverage to remove door clips. Ergonomic spring loaded handles are rotated 90° to provide leverage needed to easily remove push in fasteners. The tapered forked end makes getting under the clips easier and helps prevent damage to the clips or door panel. Works on a wide range of push in clip sizes.

© 2017 Lisle Corporation

**LISLE CORPORATION • PO BOX 89 • CLARINDA, IA 51632-0089  
712-542-5101 • FAX 712-542-6591 • WWW.LISLECORP.COM**



**Circle 90 on card, or enter at "e-inquiry" on VehicleServicePros.com**

# PUT YOUR PLIERS IN THEIR PLACE

Patent Pending



INTRODUCING THE NEW

## PLIER PRO

10 TOOL PLIER ORGANIZER

- High-grip rubber floor keeps tools in place
- Fuel and solvent resistant
- Organize pliers upright in toolbox drawers
- Fits wide variety of tools
- Immediate recognition of missing tools



SEE OUR FULL LINE AT  
WWW.ERNSTMF6.COM  
877-376-7885

**ERNST**  
MANUFACTURING INC.

PROUDLY MADE IN THE USA

LIFETIME GUARANTEE

*The Leader in Tool Organization*

Circle 91 on card, or enter at "e-inquiry" on VehicleServicePros.com

### GOT A FROZEN/DAMAGED LUG NUT?

#### LT1350 LUG RIPPER II

- Don't torch frozen/damaged lug nuts off just drill out the lug nut/stud threads only in 11 minutes or less
- 16mm Tungsten steel drill bit with 4 carbide cutters allow for speed and durability
- Available **NOW** from your local mobile tool dealer/distributor
- Patent Pending
- Includes 4 drill guides - 17mm - 11/16"  
19mm - 3/4"  
21mm - 13/16"  
23mm - 7/8"



Drills out female/male threads on lug nut/stud only!



### GOT MERCEDES WHEEL LOCK REMOVAL PROBLEMS?

#### LT4180 MERCEDES "A" WHEEL LOCK MASTER KEY SET

- 30 piece set works on 2006-present MERCEDES factory wheel lug nut locks
- Factory duplicate - uses same factory part numbers
- NO WARRANTY - CAN'T BE USED WITH AN IMPACT GUN
- NOTE: The MERCEDES "B" set is the same as the LT4165 BMW kit shown below. The two kits together will work on all MERCEDES vehicles



#### MERCEDES "B" WHEEL LOCK MASTER KEY SET same as LT4165 BMW 2nd GENERATION WHEEL LOCK MASTER KEY SET

- 20 piece factory reproduced master wheel lock key set
- Removes 2nd generation 2011-present BMW factory wheel lug nut locks
- Identical to factory set - uses same factory part numbers
- NO WARRANTY - CAN'T BE USED WITH AN IMPACT GUN



**We Make Good Ideas**

LOCK TECHNOLOGY, INC.  
Toll Free 800-421-7241  
www.lttools.com  
lttools@lttools.com

Circle 92 on card, or enter at "e-inquiry" on VehicleServicePros.com

## New Products



### Water-resistant leather

The Coastal Boot Sebring Series of Athletic Footwear, available from Snap-on, features high-quality, water-resistant full grain leather with Cordura uppers. The boots have removable Smartmaska sock liners for added comfort on concrete floors and a Cambrellea lined interior for abrasion resistance and moisture management. They also have ASTM-rated steel toes and gas-, oil- and grease-resistant outsoles. Available in black/red, E width, sizes 7-13.

Circle 93 on card, or enter at "e-inquiry" on VehicleServicePros.com

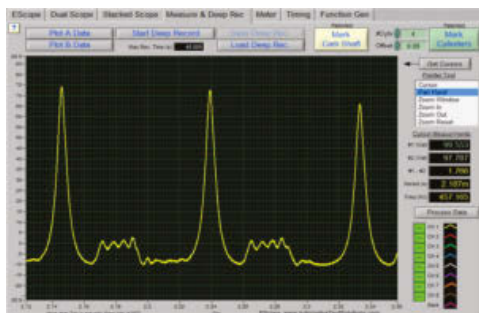


### Allows techs to inspect difficult areas

The OTC Wireless Scope Kit, No. 3881, allows technicians to inspect difficult areas to locate leaks, shorts or any lost parts or pieces. This kit is ideal in situations where an attached screen would prevent usage. The wireless video scope can be used with a technician's smartphone or tablet. The kit includes a 9mm waterproof camera as well as a miniature 5.8mm waterproof camera for checking small lines.

Circle 94 on card, or enter at "e-inquiry" on VehicleServicePros.com





### Covers a variety of topics

The ATG Chrysler Training Seminar is based on the analysis of actual diagnostic issues and the documented shortest diagnostic paths. All OBD II Chrysler, Dodge, Jeep and Fiat gasoline vehicles are covered. Systems covered include extensive cam/crank relationship, air fuel sensor and O2 sensor diagnostics, misfire diagnostic strategies, variable intake and lift timing, and more.

Circle 95 on card, or enter at "e-inquiry" on [VehicleServicePros.com](http://VehicleServicePros.com)



### Quickly locates leaks in cooling systems

The OEM Tools Universal Cooling System Pressure Kit, No. 27068, quickly and easily helps locate and diagnose leaks in automotive cooling systems. The expandable adapters work with both radiators and cooling system reservoirs, and the easy lever style pressure relief valve protects technicians from exposure to coolant. The kit includes small, medium and large adapters designed to prevent damage to plastic reservoir threads, and a pressure pump.

Circle 96 on card, or enter at "e-inquiry" on [VehicleServicePros.com](http://VehicleServicePros.com)

## New Products



### Bonds to most surfaces

The Boss Products RapidFix UV Fiber Patch is an easy-to-use UV light/sunlight activated self-adhesive repair patch. The patch is moldable to follow the contour of repair, with no shrinkage or expansion during application. The patch is made of fiberglass-reinforced polyester, bonds to most surfaces (does not bond to polypropylene) and cures quickly. The patch can be drilled, sanded and painted and is easy to apply.

Circle 97 on card, or enter at "e-inquiry" on [VehicleServicePros.com](http://VehicleServicePros.com)



### STREAMLIGHT® USB. POWER UP ANYTIME, ANYWHERE.

When there's a job that needs to get done, you need to be ready to work. Ditto with your lights. That's why we make a variety of USB handheld and hands-free rechargeables with different beams and lumens for different tasks. So whenever and wherever you need to power up, you're always good to go. [STREAMLIGHT.COM](http://STREAMLIGHT.COM)



©2017 STREAMLIGHT, INC.

Circle 98 on card, or enter at "e-inquiry" on [VehicleServicePros.com](http://VehicleServicePros.com)

## New Products

### Laser targeting accuracy for temperature readings

The Mastercool Infrared Thermometer with Laser, No. 52224-A, provides laser targeting accuracy for temperature reading, with an enhanced back-lit LCD display and an expanded temperature range. With a contact temperature range of -58 degrees F to 932 degrees F (-50 degrees C to 500 degrees C), this tool offers a 12:1 field of view and a response time of 0.5 seconds. The unit powers off automatically after 15 seconds. The tool includes two AAA batteries and an instruction manual in a plastic molded carrying case.

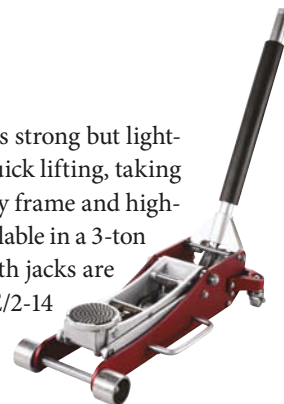
Circle 99 on card, or enter at "e-inquiry" on VehicleServicePros.com



### Strong, lightweight and portable

The KTI 2-Ton Aluminum Service Jack XD, No. KTI63098, is strong but lightweight for easy portability. The dual pump system allows for quick lifting, taking seven strokes to reach top height under no load. The heavy duty frame and high-quality components provide safe and efficient service. Also available in a 3-ton aluminum service jack (No. KTI3099) that weighs 58.4 lbs. Both jacks are covered by a two-year warranty and comply with ASME PASE/2-14 safety standards.

Circle 100 on card, or enter at "e-inquiry" on VehicleServicePros.com



### Features an adjustable five-point headgear

ESAB's Sentinel A50 High Performance Automatic Welding Helmet offers an adjustable five-point headgear, an externally activated grind button, a color touchscreen control panel and a front-loading convex lens that is available in different color options and changes in 10 seconds. The anti-scratch coating reduces the reflection from high exposure to spatter and sparks.

Circle 101 on card, or enter at "e-inquiry" on VehicleServicePros.com



## TEST DEUTSCH! NEW FUSE BUDDY!

### 148 14 Pc. Deutsch Test Connector Kit

- Terminal adapter set makes good fit with Deutsch style connectors - permits in-line diagnostic testing
- Includes test adapters for size 14, 16 & 20 connectors
- 48" test leads included - use w/scopes & DMM's

2 New Items!!

### 309 Fuse Buddy® Mini Kit

- Tests all 3 fuse sizes: Micro, Mini & ATO
- Kit addresses new Micro fused circuits
- Read circuit Amps to 30A

Call 800-227-1603 for more info. - [www.esitest.com](http://www.esitest.com)



Circle 102 on card, or enter at "e-inquiry" on VehicleServicePros.com

## AE TOOLS & COMPUTERS

WWW.AETOOLS.US

HAVE QUESTIONS? TALK TO A REAL PERSON!

REAL SUPPORT. 913.856.6678  
REAL SOLUTIONS. 1-855-wiTECH2



## wiTECH 2

wiTECH 2 introduces fully wireless usage of your MicroPOD II with iOS or Android tablets and phones.



## Technical Service Portal

The wiTECH Tools Aftermarket Sales and Support Portal is your gateway to the latest FCA diagnostic tools, software and support. AE Tools & Computers is an authorized factory provider of wiTECH and Tech Authority Subscriptions!

<https://AETools.wiTECHtools.com>

Circle 103 on card, or enter at "e-inquiry" on VehicleServicePros.com





## Comes in an EVA foam tray

**Mighty-Seven's 19-pc Hex Thru-Hole Socket Set**, No. MA52019, includes eight SAE thru-hole sockets, eight metric thru-hole sockets, two adapters and a 3" thru-hole extension bar. The entire set comes in a custom EVA foam try, and each piece is laser etched with the model number and size. All M7 impact sockets are made from high-grade chrome molybdenum alloy steel and are backed by a limited lifetime warranty.

**Circle 104 on card, or enter at "e-inquiry" on VehicleServicePros.com**

## Offset 15 degrees to allow easy access

The **EZ Red 4S12XL Quarter Stick Ratchet** offers a 1/4" square drive on one end and a magnetic bit drive on the other. The heads are offset 15 degrees to allow easy access in constricted workspaces. This ratchet is designed for use in tight spaces where regular ratchets won't fit, says the company. Both drives are reversible and feature a low profile knurled thumb wheel. The overall ratchet is 11.75".

**Circle 105 on card, or enter at "e-inquiry" on VehicleServicePros.com**



## Designed for tight clearance spots

The **S & G Tool Aid Corp. 5-pc Body Forming Punch Set**, No. 89360, is designed for tight clearance spots, crevices and corners. The punch surfaces are polished and hardened to form sheet metal with precision in hard-to-reach areas. They are used to form curves, contours and radiuses and reach far into panels and structural members. The kit includes the five most commonly needed profiles and shapes.

**Circle 106 on card, or enter at "e-inquiry" on VehicleServicePros.com**



# EXPERIENCE THE DIFFERENCE



## The Original Wireless Portable Lift System

**Improve productivity and flexibility:**

Wireless feature enables technicians to:

- Get set-up **FASTER...**
- Get the vehicle up **FASTER...**
- Get the job done **FASTER...**

**800.821.7320 / [www.grayusa.com](http://www.grayusa.com)**



U.S. Patents 6,634,461 • 7,014,012 • 7,219,770 Canadian Patent 2,406,340

**Circle 107 on card, or enter at "e-inquiry" on VehicleServicePros.com**

## Full bi-directional controls covering over 60 manufacturers

The **CanDo HD Pro Tab** is an open Android, Bluetooth wireless scan tool for heavy duty truck, agricultural and industrial applications. Users can perform diesel particulate filter (DPF) regeneration and NOx resets, injector programming, change and set parameters, along with SCR/DEF coverage and full bi-directional controls covering over 60 manufacturers, including John Deere, Komatsu and Bluebird. Fill transmission and brake system coverage is also part of the package. Featuring an IP65 rating, it is drop-tested and water-resistant. Screen size is 10.1" IPS and a full suite of connectors accompanies the HD Pro Tab, along with a docking station complete with USB ports. The tool comes with two years of free updates.

**Circle 108 on card, or enter at "e-inquiry" on VehicleServicePros.com**



## Attaches directly to the air hose

Intercomp's **Fill, Bleed and Read Air Gauges** make a tedious process into a smooth and easy operation, according to the company. The air gauges attach directly to the air or nitrogen hose. Standard features include a high-quality, digital pressure gauge with rubber protective cover, a 22" hose with a high quality swivel nozzle and an industrial grade bleeder valve.

**Circle 109 on card, or enter at "e-inquiry" on VehicleServicePros.com**



## Short handle increases maneuverability

The **V8 Adjustable Wrench**, No. 629, offers a thin, sleek design that makes working in tight areas easier, says the company. The wrench has a short handle for increased maneuverability, and the spring-loaded quick release allows for quick jaw adjustments and changes. The jaw opens up to 2-1/16" and has a thickness of 0.25". The wrench comes with two jaws: one that is adjustable from 9/16" to 1-9/16", and one that is adjustable from 1-1/16" to 2-1/16". Patent pending.

**Circle 110 on card, or enter at "e-inquiry" on VehicleServicePros.com**



## AIRSEPT®



**Every Shop Needs This – Are YOU selling it?**

**QUICK - EASY - PROFITABLE SALE**

**SMART SPLICE™ ULTIMATE SYSTEM**  
**EVERYTHING NEEDED TO REPAIR**

Air Conditioning Lines  
Coolant And Heater Lines  
Trans Oil Cooler Lines  
Transmission Lines  
Engine Oil Lines  
Engine Oil Cooler Lines  
Power Steering Return Lines

**INSTALLS IN FIVE MINUTES**  
**NO SPECIAL TOOLS, NO GLUE**  
**OE-APPROVED REPAIR SOLUTION**



**CERTIFIED LEAK-FREE**

**Great Products Lead to Great Sales – Call US TODAY!**

**1-800-999-1051 | www.airsept.com**

**Circle 113 on card, or enter at "e-inquiry" on VehicleServicePros.com**

## Two channel automotive scope

Matco's **Auto Signal Waveform Viewer 2**, No. MDAUTOWAVE2, is a handheld, battery operated, two-channel automotive scope. The unit includes a user-friendly Auto-Set feature that automatically sets the voltage/time scales on any signal or voltage for easy waveform viewing. Waveforms are displayed on a 3-1/2" color LCD display and can be saved to 8GB of storage. The saved waveforms can be converted to bitmap files and downloaded to a PC using a USB cable connection.

**Circle 111 on card, or enter at "e-inquiry" on VehicleServicePros.com**



## Can improve productivity and reduce downtime

Jaltest 17.1, developed by Cojali USA, can improve productivity and reduce downtime by connecting the diagnostic tool with a shop manager, according to the company. The new Jaltest software integrates the most complete technical information database with electrical, operating or fuse and relay diagrams, component information, service data, TSBs and systematic repair guides by symptomatology or fault codes. Jaltest complies with the RP1210 standard.

**Circle 112 on card, or enter at "e-inquiry" on VehicleServicePros.com**







### Portable yet powerful lighting solution

The Larson Electronics WAL-TP-BS-2XLED-6X portable LED work light provides a portable yet powerful lighting solution. It produces 10,000 lm of bright white light illuminating 15,000 sq. ft. of work space. Each light head contains two 25 watt LEDs housed within a water-proof aluminum housing powdercoated for added durability and corrosion resistance. The heavy duty aluminum tripod is durable, lightweight and adjustable to any length between 3' and 8'. The tripod legs collapse and the light head bracket is removable for simple portability and deployment.

**Circle 114 on card, or enter at "e-inquiry" on VehicleServicePros.com**



### Made from industrial grade, high quality material

KT Pro's Line of Heavy Duty Torque Wrenches are made from industrial grade, high-quality material and meet the highest German DIN and ASME standards. Drive sizes range from 1/4"-1" drive with multiple scale options, including Nm and ft/lbs scales. All torque wrenches come with a certificate of calibration and have a tolerance of torque +/- 3 percent.

**Circle 115 on card, or enter at "e-inquiry" on VehicleServicePros.com**



### 30-degree angle provides extra leverage

Lisle's Abrasive Pad Scraper, No. 52600, offers a 30-degree angle of leverage when cleaning gasket surfaces. The pad wraps around the end of the tool to reach tight corners, and the pad can be re-positioned on the tool as it wears. The pad scraper comes with three easily replaceable 1" by 4" medium grit pads.

**Circle 116 on card, or enter at "e-inquiry" on VehicleServicePros.com**

## LAUNCH

CREATE • CHANGE

## TWO NEW, EXTREMELY FAST, PROFESSIONAL SCAN TOOLS X-43I PRO & X-43I PRO 3



8" Touch Screen Tablet

10.1" Touch Screen Tablet



## FEATURING TECH TO TECH REMOTE SUPPORT

GO TO OUR WEBSITE TO FIND OUT MORE

1820 S. Milliken Ave • Ontario, CA 91761 • ph: 1-877-528-6249

[www.LaunchTechUSA.com](http://www.LaunchTechUSA.com)

**Circle 117 on card, or enter at "e-inquiry" on VehicleServicePros.com**

# Radcap Radiator Cap Wrench

This tool saved the reviewer time when removing radiator caps.

By Stefanie Von Rueden, Assistant Editor

**H**aving the right tool for the job saves technicians' valuable time and increases productivity. According to Eric Moore, owner of DeMary Truck in Columbus, Ohio, the Radcap Radiator Cap Wrench saved him a few minutes of work whenever he used it, since it easily removed radiator caps without him needing to use other tools.

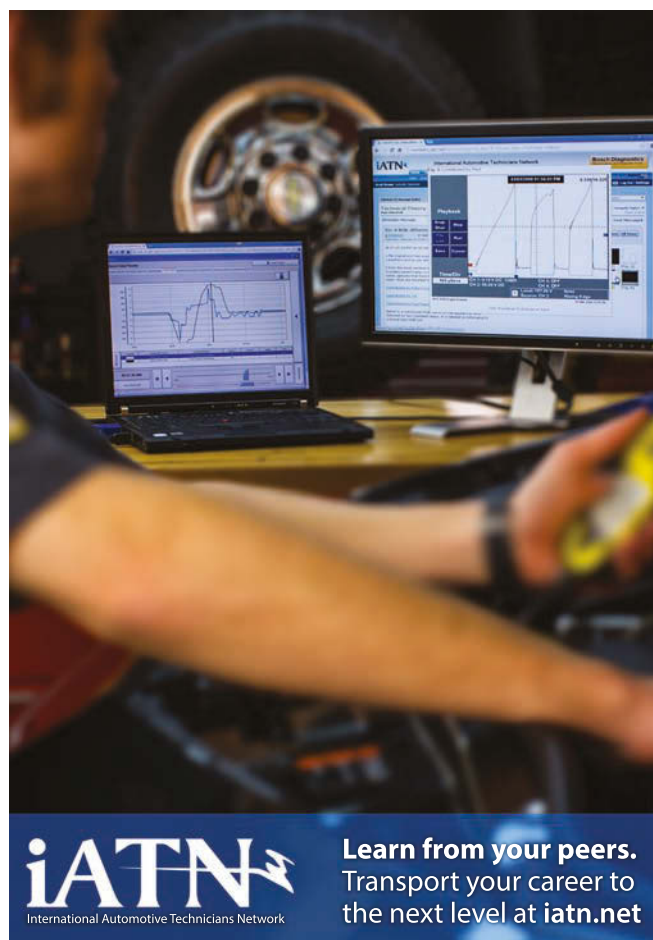
"The Radiator Cap Wrench could not be any more straightforward to use," Moore says. "Simply place the correct end over



## PRODUCT DESCRIPTION:

The Radcap Radiator Cap Wrench is a lightweight, ABS plastic wrench designed to remove the radiator cap on the Behr cooling package. This tool can remove both the three-finger and four-finger caps associated with these radiators without causing damage to the cap or threads on the plastic header tank.

**Circle 118 on card, or enter at "e-inquiry" on VehicleServicePros.com**



**iATN**  
International Automotive Technicians Network

**Learn from your peers.**  
Transport your career to  
the next level at [iatn.net](http://iatn.net)

**Circle 119 on card, or enter at "e-inquiry" on VehicleServicePros.com**

the cap and leverage it loose."

He and his technicians used it mainly on Class 8 vehicles coming through the shop, although a few Class 7 trucks had the same radiator cap style.

The wrench came in basic packaging with no accessories. The tool did not require any setup, and was simple enough that it didn't need a manual. Moore notes that it did come with a flyer, but the tool was pretty self-explanatory.

He adds that he has never seen another tool of this design. He found it to be well designed and easy to use, and had no suggestions for improvement.

"This tool doesn't have too many features to mention," Moore says. "It serves a single purpose, which it does brilliantly."

Moore and his technicians work mainly on medium duty trucks, so the Radiator Cap Wrench was not a tool that they needed to use frequently. But, it was their go-to tool for removing radiator caps on heavy duty trucks because it worked well and was efficient.

Moore appreciated that the Radiator Cap Wrench worked without fail every time. It made loosening stuck radiator caps much easier, plus eliminated situations where his technicians would otherwise have to use grooved pliers and brute strength to loosen stubborn caps. It also saved his technicians excessive trips back to the toolbox for other tools that might be able to budge the stuck radiator caps.

Moore notes that the wrench was very durable. There was no give in the wrench even on the toughest stuck caps.

Overall, Moore found that the Radiator Cap Wrench saved him and his technicians time when removing radiator caps.

"It's simple and it works," he concludes. **PTEN**



# STOP CHASING

Large soft-touch controls  
offer an ideal user-interface



Adjustable display adjusts  
to suit operator preferences



Features tape-weight  
holder and feeder



Model DST30P  
MSRP: \$1,910  
\*Free Shipping

Looking for a one-spin-and-done solution to your wheel vibration problems? Ranger's new DST-30P wheel balancer is a highly accurate, zero-tolerance machine that makes your work faster, easier and more profitable than ever before. Our Eco-balance™ technology precisely calculates the minimum amount of weight needed to achieve an optimal balance, dramatically reducing the weight added per wheel. **Warning:** this will result in REAL savings. If you're tired of chasing weights instead of your dreams, give us a call.

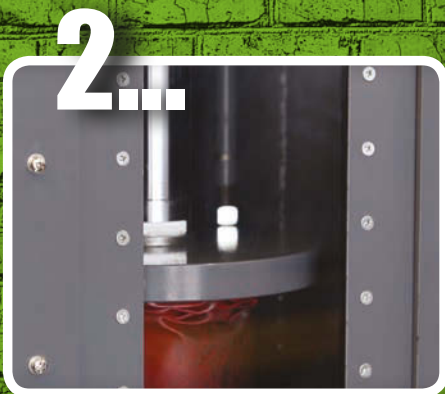
For more info, contact your local BendPak/Ranger dealer or call 1-800-253-2363.

Circle 120 on card, or enter at "e-inquiry" on [VehicleServicePros.com](http://VehicleServicePros.com)

\*Free shipping on all Ranger Products to most areas in the 48 contiguous states.  
© 2017 Ranger Products • BendPak Inc. and Ranger Products are registered marks.

**R Ranger**





# CRUSHER

## RECYCLE & REPEAT

**MRP**  
**\$4,850**

**NEW**



**50,000 LBS.**  
**OF CRUSHING**  
**POWER!**

### QUICK SPECS /FEATURES

- 2HP electric-hydraulic pump
- Save on waste disposal cost
- Features automatic or manual cycles
- Welded steel plate construction
- Transparent door for convenient view
- Cycle time approximately 8 to 15 sec.

### RP-50FC | OIL FILTER CAN CRUSHER

The RP-50FC high-speed oil filter crusher harnesses 50,000 lbs. of crushing force to flatten just about any car or truck oil filter to 20% of its original size in mere seconds. Reduce filter collection costs, save money on environmental fees and permits and earn extra cash when you start recycling the oil and scrap metal filter pucks. Visit our website [www.rangerproducts.com](http://www.rangerproducts.com) or call 1-800-253-2363 to learn how Ranger can help your business go green, save green and make green with the RP-50FC oil filter crusher.



Call **1-800-253-2363** or Visit [rangerproducts.com/RP-50FC](http://rangerproducts.com/RP-50FC)

\*Free shipping on all Ranger Products to most areas in the 48 contiguous states. Circle 121 on card, or enter at "e-inquiry" on [VehicleServicePros.com](http://VehicleServicePros.com)

**R Ranger**



## Mastercool Arctic Commander line of RRR machines

The reviewers appreciate the functionality and ease of use of this RRR machine's graphic user interface.

By Mike Schmidt, Managing Editor

**"W**e needed (an RRR machine) that was fast and we could count on to be reliable," says Patrick Davis, lead technician at Smyrna Auto Air. "We're using them every day. And when you need one, you need it to work."

Davis says he and his fellow technicians at the New Smyrna Beach, Fla.-based shop found exactly what they were looking for in a Mastercool Arctic Commander RRR machine.

"We've used it quite a bit and everything works great," he adds.

Smyrna Auto Air conducts quite a bit of automotive air and radiator work, and Davis says he and his technicians often have four RRR machines running simultaneously on a busy summer day. He describes the Mastercool offering as a "level above" its counterparts in the shop, and testing it out left him impressed by both the functionality and ease of use of the machine's graphic user interface. He notes that the screen and the interface offer more features than the other RRR machines the shop uses, but both navigation and the ability to input data are not adversely affected.

"The first thing I really noticed and liked was that it has a built-in database of how much Freon goes in every vehicle," Davis explains. "So instead of having to go over to my computer and type in a whole bunch of stuff and re-input everything, I can do it directly on the machine. Once



(the RRR machine) looks it up, it uses that number. I don't have to punch it in or remember anything."

Another feature Davis appreciates is the speed of the machine's high-efficiency recovery feature, which he notes is three or four times faster than those of the other RRR machines at Smyrna Auto Air. In addition, he states the oil injection feature is simple and easy to use.

"It lets you know how much you are putting in without having to hold a button, leaning over and looking at the bottle, or doing it manually," Davis says.

Being able to employ the Mastercool RRR machine in automatic mode is also advantageous for Davis and his fellow technicians at Smyrna Auto Air.

"I just turn it on, set how much oil I want to put in and how much Freon I want to put in," he explains. "It recovers what was in there, vacuums it, injects the oil and then fills the system."

Like Davis, Marco Espaillat, shop owner at Master Service Auto Repair in West Palm Beach, Fla. also appreciates being able to use the Mastercool RRR machine in automatic mode.

"You just turn the machine on, it gives

you the menu option — automatic or manual — you plug in the car information, you hit 'enter' and basically wait for the machine to do the entire cycle," he says.

Having used a previous Mastercool offering in the past, Espaillat was left impressed by several features of the latest iteration, including its graphic user interface, its multi-language menu and the speed with which it allows him and other technicians diagnose and address A/C issues.

"It's very complete," he says. "I don't know what else (Mastercool) could add to it. I'm very satisfied with this machine." **PTEN**

### PRODUCT DESCRIPTION:

Mastercool's Arctic Commander line of RRR machines feature an 8" color, touchscreen command center, with a graphic user interface (GUI) that will enable navigation through all functions and features with ease, says the company. No need to read external instructions or paper manuals, these machines have internal video instruction. All machines are equipped with Wi-Fi capabilities; allowing for real-time, interactive communication and troubleshooting.

Circle 122 on card, or enter at "e-inquiry" on [VehicleServicePros.com](http://VehicleServicePros.com)

# Gray Manufacturing Wireless Portable Lifts

The reviewer is impressed by how quick and easy it is for the lifts to be set up, moved where they are needed and stored away.

*By Mike Schmidt, Managing Editor*

**T**here is no overstating the convenience offered by shop equipment that is easy to store, easy to maneuver and provides a level of convenience not found in the vast majority of competitive offerings.

Glenn Collins, shop supervisor, Von Ormy, Texas-based Daimler Trucks dealership Custom Truck Services, found himself in need of a lift with those characteristics, and he found it in the Gray Manufacturing Wireless Portable Lift System, No. WPLS-135.

"This system has not failed me," says Collins, whose shop contains a set of four Gray wireless lifts. "It does everything I need it to do."

Collins's shop employs the Gray offerings to lift Class 8 tractors. He says he is quite impressed by how quick and easy it is for the lifts to be set up, moved where they are needed and stored away when they are not in use. The shop has used wired lifts exclusively in the past, but Collins says he eventually determined he desired a "cleaner look" and wanted to avoid tripping hazards associated with lifts that include wires.

"When I was researching a lift system for the shop, the primary purpose was so we could get quality reviews from customers in the shop," he explains. "(The Gray lifts) are extremely clean, and there are no wires that run between each lift. I've used systems in the past that did, and if you don't mind not having a clean space, then

that would work for your environment. However, in our environment, I needed something that looked good because there is a certain aspect of presentation that was involved in the decision-making process."

Collins credits Gray Manufacturing for sending a representative to his facility to explain the features of the lift and how to operate it.

"I had several people other than myself that needed to learn about the lift," he says. "It was me, my employees, my boss and another company that's on our same property that was also interested in purchasing a set of lifts, too. Gray was willing to send a guy out and he put on a several-hour presentation."

Collins says programming the lift involves using a touchscreen that more or less resembles the screen on a mobile tablet.

"Once you have each post communicating with each other, you basically only have to push the 'enable' button and then either 'up' or 'down,'" he explains. "It's really that easy."

The absence of wires make storing the Gray lifts much easier for Collins and others at Daimler Trucks because they don't take up as much space as other offerings. In fact, he says, he and his employees often leave the lifts plugged into 110V outlets and charging until they are required for use.

## PRODUCT DESCRIPTION:

The Gray Manufacturing Line of Wireless Mobile Column Lifts features a wireless communication system and touchscreen graphic control system. Capable of lifting a variety of vehicles, these lifts have no external wires or cords, and when used at full operating height, they can provide a lift height of 69". Model No. WPLS-135 is a 13,500-lb capacity, 24V mobile column that can be operated in sets of two, four, six or eight, allowing users a capacity range of 26,500-108,000 lbs. Model No. WPLS-185 is an 18,500-lb capacity, 24V unit, which can be operated in sets for a capacity range of 37,000-148,000 lbs. No. WPLS-185W is an 18,500-lb capacity, 24V model with a wide, adjustable carriage for over-sized tire engagement. The column can be operated in sets for a capacity range of 37,000-148,000 lbs.

**Circle 123 on card, or enter at "e-inquiry" on VehicleServicePros.com**



"It's not like they are going to overcharge," he says. "When you are ready, you get them, roll them out, turn them on and make sure they are connected."

Overall, Collins says he couldn't be happier with what the Gray Manufacturing Wireless Portable Lift System, No. WPLS-135, offers in terms of both convenience and performance. He also commends the company for being willing to send a representative to ensure he and others at Custom Truck Services could get the most out of the lifts when they were put into use at the Daimler Trucks dealership.

"It's clean, it's professional-looking and it's awesome," he adds. **PTEN**



## Autel MaxiSYS Commercial Vehicle Diagnostics Scan Tool

The reviewer says the tool provided quick, accurate diagnoses and offered a wide range of make and model coverage.

By Mike Schmidt, Managing Editor

Steve Nisenson has long relied on OEM diagnostic software and his laptop computer to diagnose a variety of issues on trucks. However, upon testing the Autel MaxiSYS commercial vehicle diagnostics scan tool, No. MS908CV, the diagnostic technician at West Babylon, NY-based fleet and vehicle auto repair shop DiBear & Sons came away impressed with the tool's performance as a viable alternative.

Nisenson admits employing the manufacturer diagnostic software can be "cumbersome from time to time." Therefore, he was pleased to find the Autel offering provided quick, accurate diagnoses and offered a wide range of make and model coverage.

"It was refreshing because it's not like I needed to get an idea of what I was scanning, look at it and bring out the manufacturer's scan tool out to dig deeper," he explains. "I was able to do it all on the handheld tool. It didn't leave me having to do anything else. It covered everything in one step."

The technicians at DiBear & Sons work most often with Freightliner trucks containing Cummins and Caterpillar engines. The first opportunity Nisenson was afforded to use the MaxiSYS was on a vehicle dealing with a transmission problem.

"Normally, we have to use the Allison

software to reset the shift adapts and relearn the shift parameters," he says. "I plugged the tool in and was able to do that fairly quickly. Right off the bat, it was a huge savings in time as far as that goes."

The amount of coverage the MaxiSYS provides was also immediately noticed and appreciated by Nisenson.

"For what I've used it for thus far, it has met or even exceeded the manufacturer scan tools," he says.

Nisenson cited the similarities between the setup and layout of the MaxiSYS commercial vehicle diagnostics tool to those of the company's automotive diagnostic offering as a major plus. He also appreciated some of the key features of the tool's menu, including images of the actual vehicle and the manufacturer's logo to help the technician ensure they are on track to get the proper information. Furthermore, the tool walked Nisenson through several processes step by step.

"Say you are doing a 'check engine' light reset and you just fixed something and the code went inactive and you want to clear the code, it'll walk you through

### PRODUCT DESCRIPTION:

The Autel MaxiSYS commercial vehicle diagnostics scan tool, No. MS908CV, performs enhanced system diagnostics on more than 60 commercial light duty, medium duty and heavy duty vehicle brands. The MS908CV is built on the MaxiSYS Android-based platform. The complete tool kit comes with the latest compact size J2534 MaxiFlash Elite to perform pass-thru programming function and complete an array of tool-guided maintenance services, then diagnose manufacturer specific systems, including Allison Transmissions, Bendix ABS brake systems, Detroit Diesel Engines and Eaton and Wabash ABS trailer brakes.

Circle 124 on card, or enter at "e-inquiry" on [VehicleServicePros.com](http://VehicleServicePros.com)



the key cycle," he explains. "You have to shut the key off, wait 10 seconds, turn the key back on and then start the engine. It lets you know all that. It doesn't leave you guessing or give you any issues."

According to Nisenson, the tool has been able to perform all of the functionality tests a technician would conduct using manufacturer software.

Another aspect of the MaxiSYS Nisenson greatly appreciates is the regular updates to the tool.

The updates and coverage additions are almost constant, he says, adding that the tool turned out to be everything he was looking for in an aftermarket offering.

"There is nothing in the market right now that can even come close to the functionality of the Autel tool," he adds. **PTEN**

## How does your shop measure up?



**97%**

of those surveyed say they approve, influence or specify shop tool and equipment purchases



There are a number of factors that impact the tools shops purchase: **76 percent** of shops purchase a tool to maintain productivity in the shop and **41 percent** of shops purchase a tool to help increase billable hours.

**W**ithout tools and equipment in the independent repair shop, technicians would be unable to complete vehicle diagnosis and repairs. While educating yourself on the new products available is integral to understanding the changes in the industry, it's only one part of the equation. It's also important to take a look at trending data to understand where our industry is headed.

Our goal at *Professional Tool & Equipment News (PTEN)*, has been and will continue to be, to make sure you have the best and most up-to-date information about the industry, so you can ultimately run a successful vehicle maintenance and/or repair business.

For the second year in a row, we took the results of our annual purchasing study to provide a high-level overview and trending outlook on the tool and equipment segment of the automotive aftermarket, to compile the 2017 Aftermarket Profile. This market overview provides insights not only to your own business, but the industry as a whole.

While we aren't able to talk with every technician or shop owner in the market, trending data from this purchasing study provides the foundation to a viable foresight on what we can expect in the coming year.

Some interesting findings from this year's survey:

- » Of the individuals surveyed, **more than half of the respondents (54 percent)** for our survey **advised they were the owner, president or vice president of their facility.**
- » The breakdown for facilities surveyed includes the following: **57 percent are general automotive repair facilities**, 15 percent are heavy duty trucking or heavy equipment service facilities, and 10 percent are specialty repair shops.
- » On average, **nearly two thirds of shops (63 percent) have five or fewer bays in the shop.** By contrast, 13 percent of shops have 10 or more bays. Most shop owners (91 percent) own only one shop.
- » A topical discussion in the industry, with the advent of repair information being made available for all OE makes, **more than three quarters of respondents (78 percent) are familiar with Right to Repair.**

Again this year, survey results indicated diagnostic equipment plays a key role in shops. While shops already own a number of products in this tool category, 81 percent of techs and shop owners still plan to purchase more diagnostic test equipment over the next 12 months.

Over the next several pages, we provide a general overview of the shops surveyed, insights on shop and technician tool and equipment purchasing plans for the coming year—highlighting data from some key tool categories—as well as technician training trends.

—Erica Schueller, Editor



Only **21%** of shops reimburse their technicians for some or all of their tool and equipment purchases.

**79 percent of technicians** are responsible for all of their own tool and equipment purchases



## [General Overview]

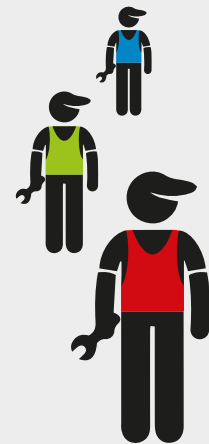
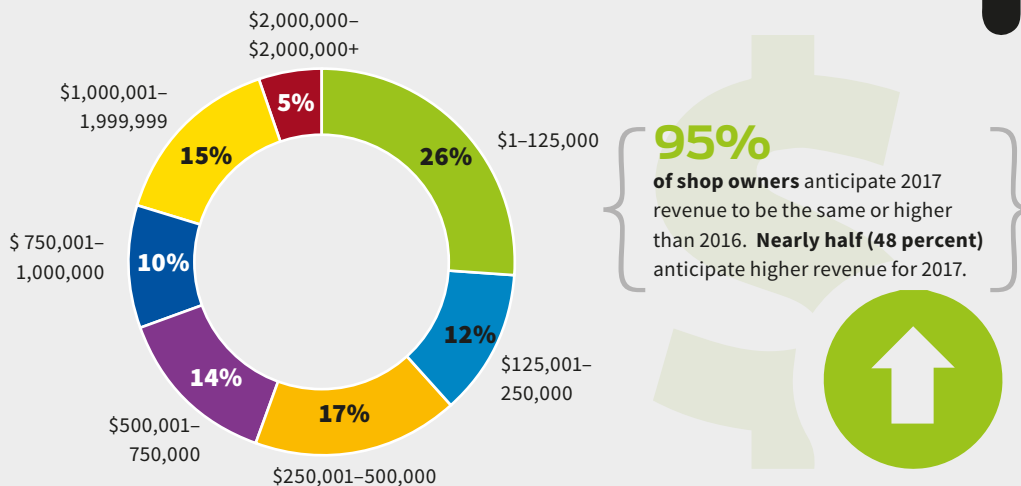
Covering an overview of the respondents for the PTEN Purchasing Study, details below highlight shop size and location, shop revenue, types of repairs and vehicles serviced in the shop, and more.

Of the Independent repair shop owners surveyed:

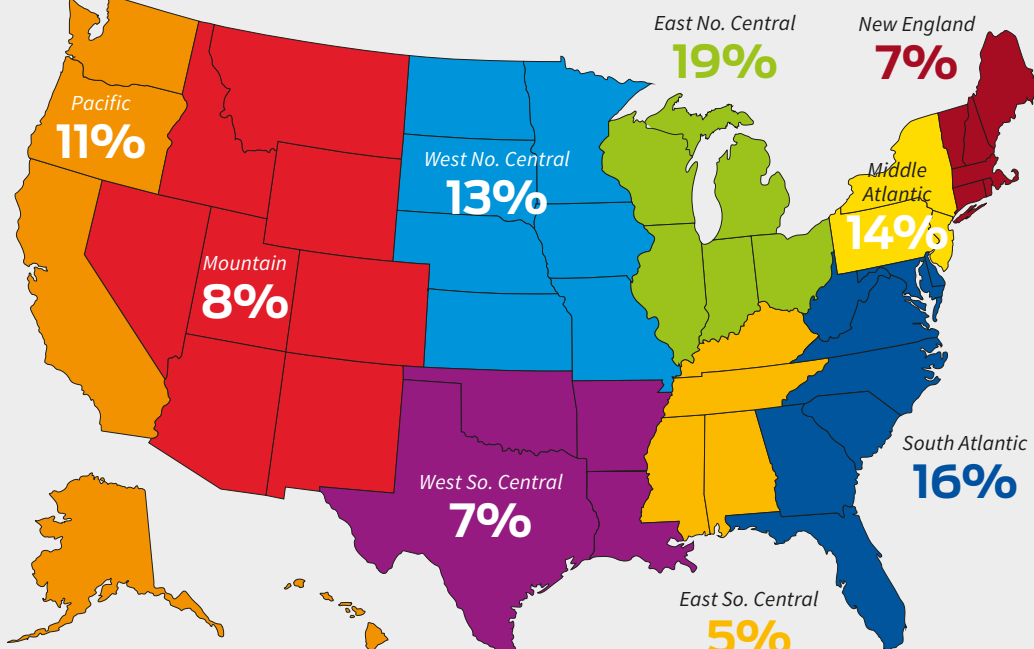
- **30 percent** of responding shops have only one technician working on vehicles in the shop.
- **70 percent** of responding shops have five or fewer technicians.



### What is your annual shop revenue?



### Where are you located?



# 22%

of shop owners anticipate hiring more technicians in 2017.

Compared to maintenance, **repairs** continue to **make up the majority of a shop's revenue**: 57 percent of shop owners say repairs make up more than half of their revenue.

### How do shop owners promote their business?



**82%**  
of shops rely on word of mouth for promoting the shop.

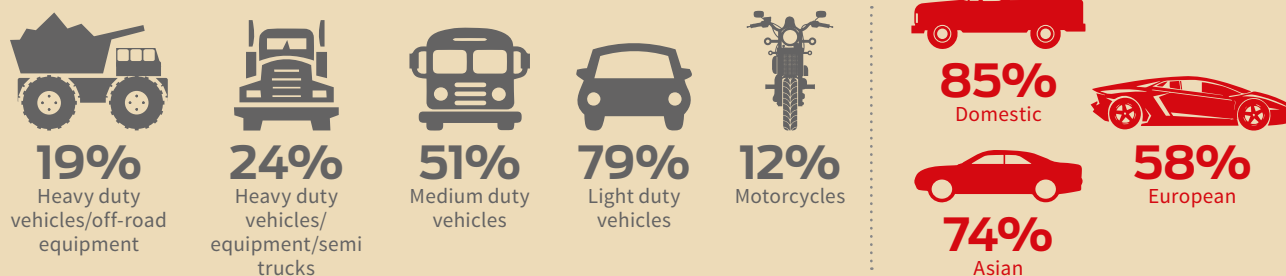
**10%**  
more shops have adopted social media to promote their business compared to last year.

### What types of repairs does your shop do?



### [Service Overview]

### What types of vehicles does your shop work on?





## [Purchasing Information]

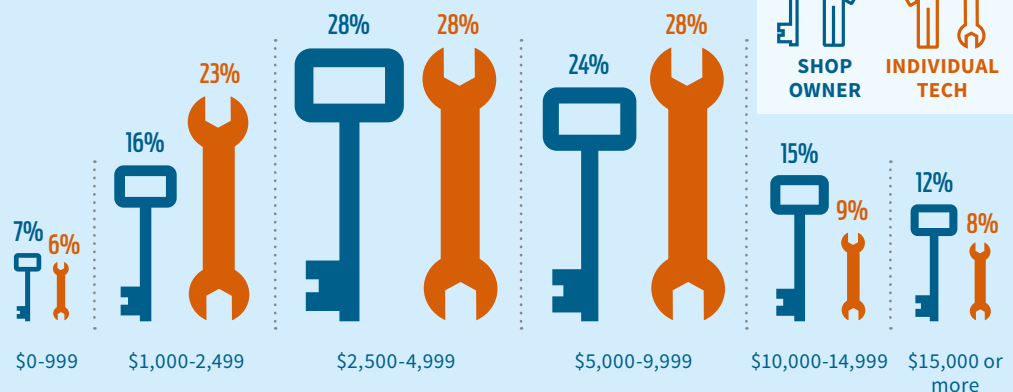
This section covers estimated tech and shop owner spending and where techs and shop owners buy their tools and equipment, followed by anticipated purchase plans for specific product categories.

Shop budgets are up for tool and equipment purchases: 95 percent of shop owners anticipate their tool and equipment budgets to be the same or higher in 2017. Of those respondents, almost half (48 percent) have increased their budget compared to last year (a 15 percent increase year-over-year).

**80%** of technicians are responsible for buying their own tools and equipment.

**89%** of technicians influence or approve tool and equipment purchases for the shop.

### Estimated total spending for tools and equipment?



## Where do you buy tools?

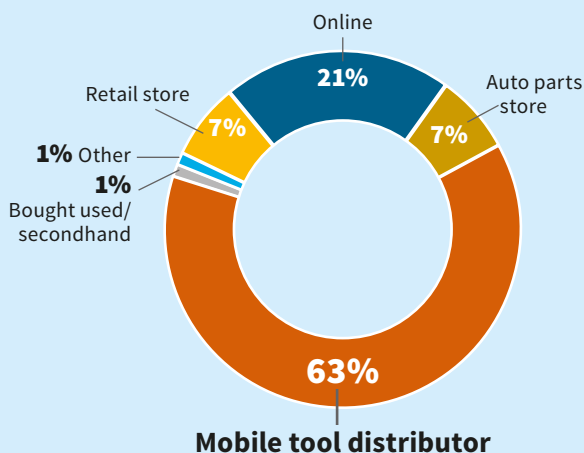
	2017	2016
Mobile tool distributors	89%	78%
Online	72%	56%
Auto parts stores	60%	50%
Retail stores	48%	37%

Techs and shop owners buy tools from NAPA Auto Parts more than any other auto parts store.

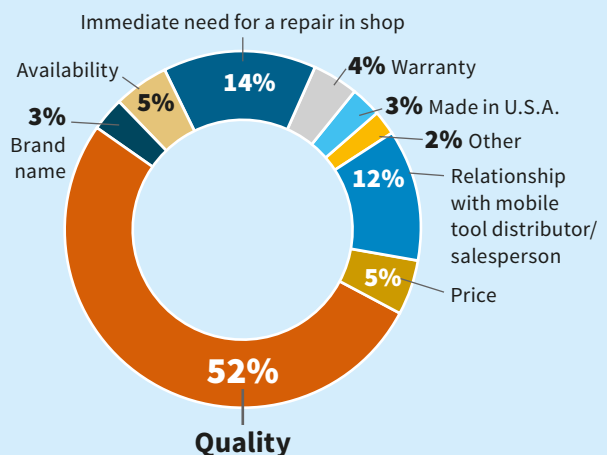
### Of the 72 percent that purchase tools online:



## Where do techs and shops purchase tools from most often?

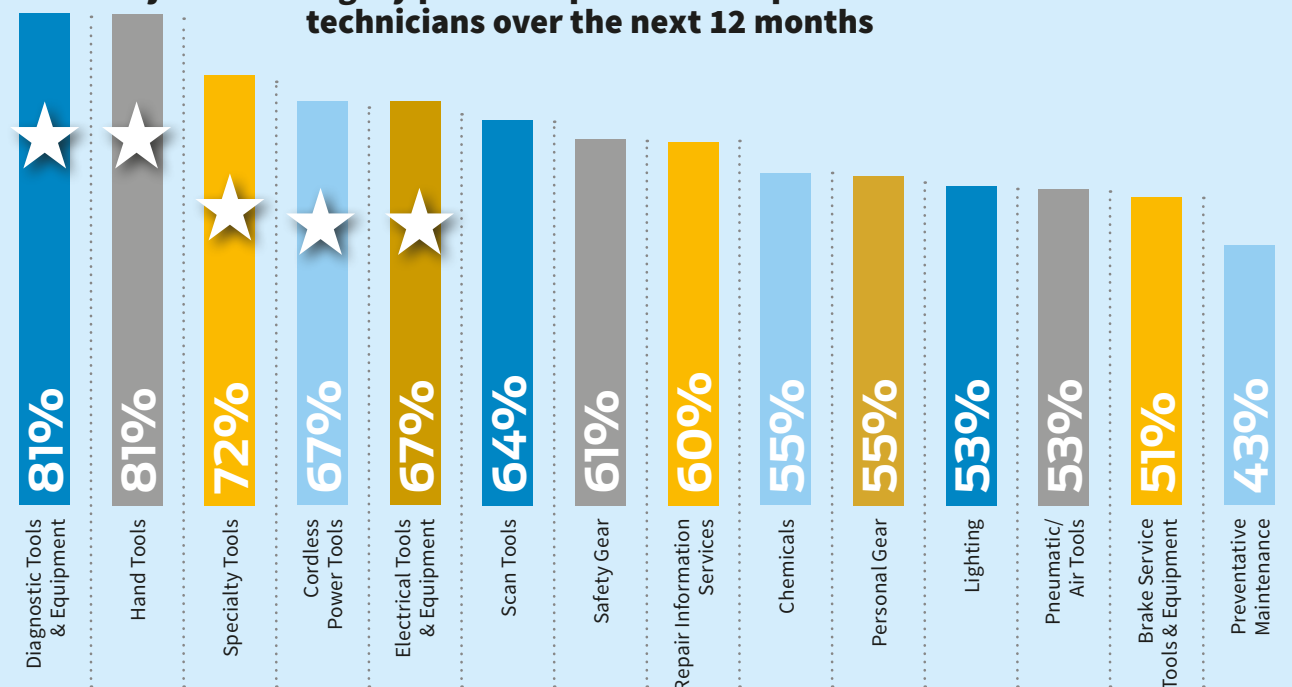


## What is the most important factor when purchasing a tool?



## Category Overview

**Major tool category purchase plans for shops and technicians over the next 12 months**



### OEM TOOLS

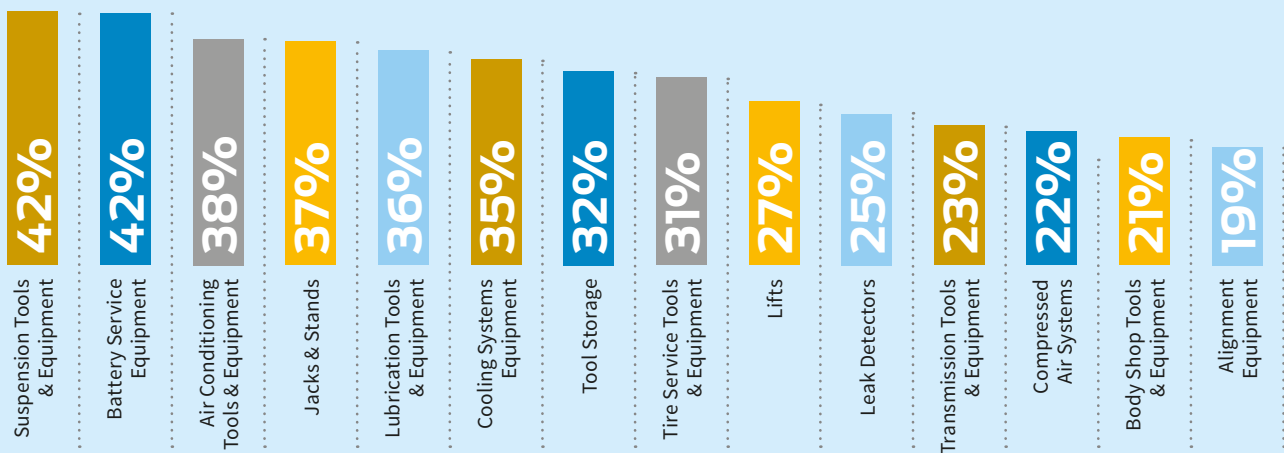
**76%** have purchased an OEM tool



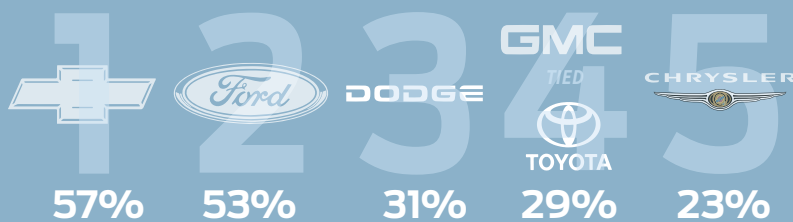
**57%**  
of shops have purchased a Chevy OEM tool



★ Nearly two thirds of shops plan to purchase these top tool categories in the next 12 months.



#### Top 5 vehicle manufacturer OEM tools that shops purchase, in order:

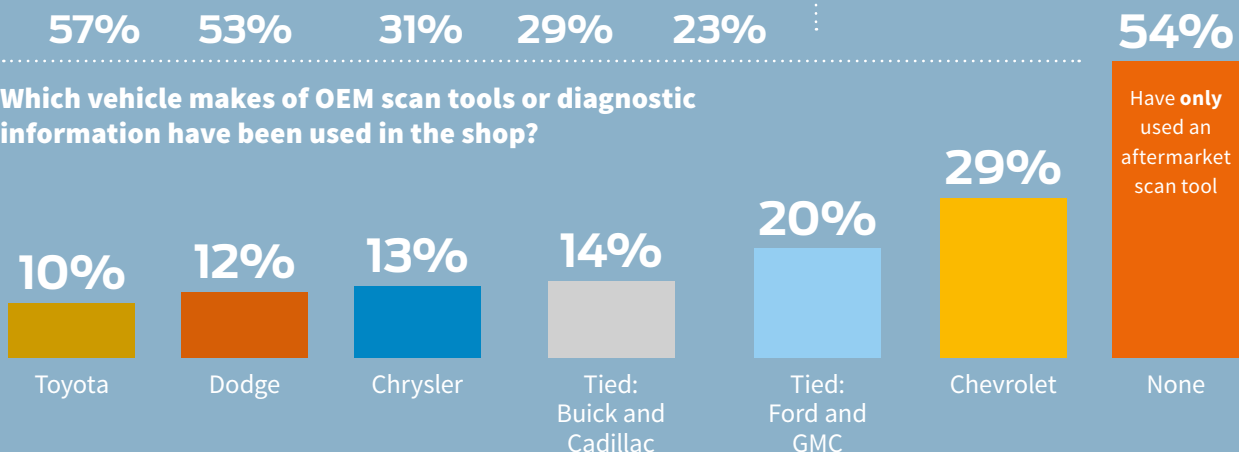


#### When it comes to using scan tools ...

46 percent use only aftermarket scan tools.

32 percent say they own an OEM-specific scan tool, and 11 percent have purchased limited-time subscription access for OEM scan tools.

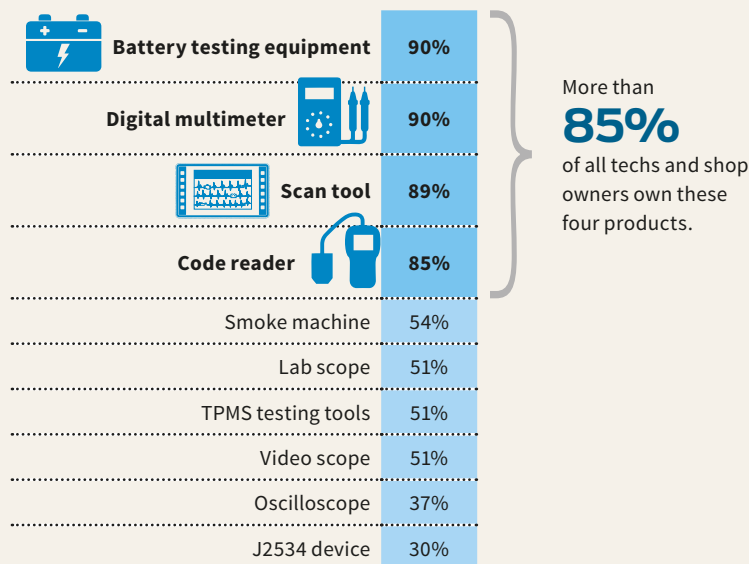
#### Which vehicle makes of OEM scan tools or diagnostic information have been used in the shop?



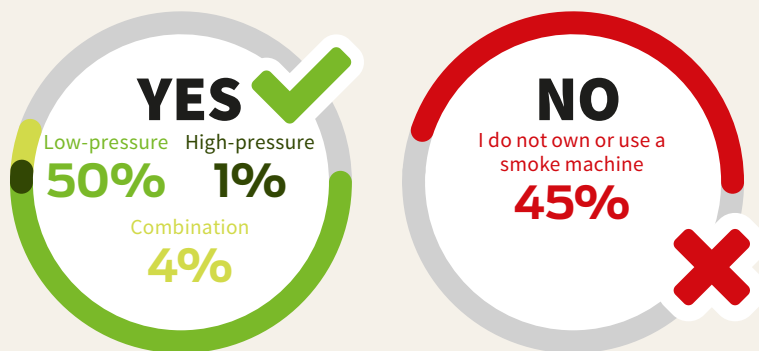
Have **only** used an aftermarket scan tool

## DIAGNOSTICS

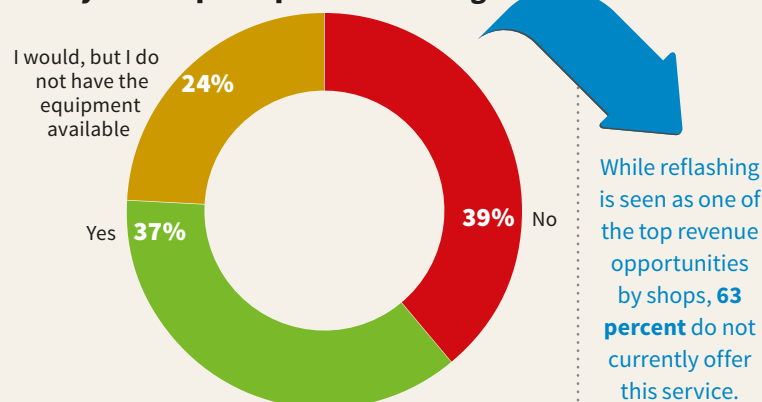
### What diagnostic tools do you currently own?



### Do you own a smoke machine?



### Does your shop complete reflashing?



### Who buys scan tools in the shop?



80 percent of technicians and shops would be interested in using a **telematics device** to remotely access and service a customer's vehicle.

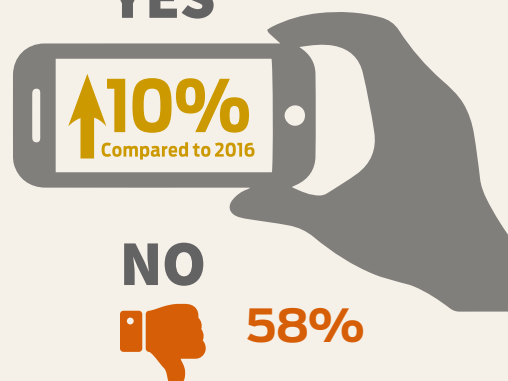


We have a shop scan tool, but I also purchase my own equipment.

**28%**

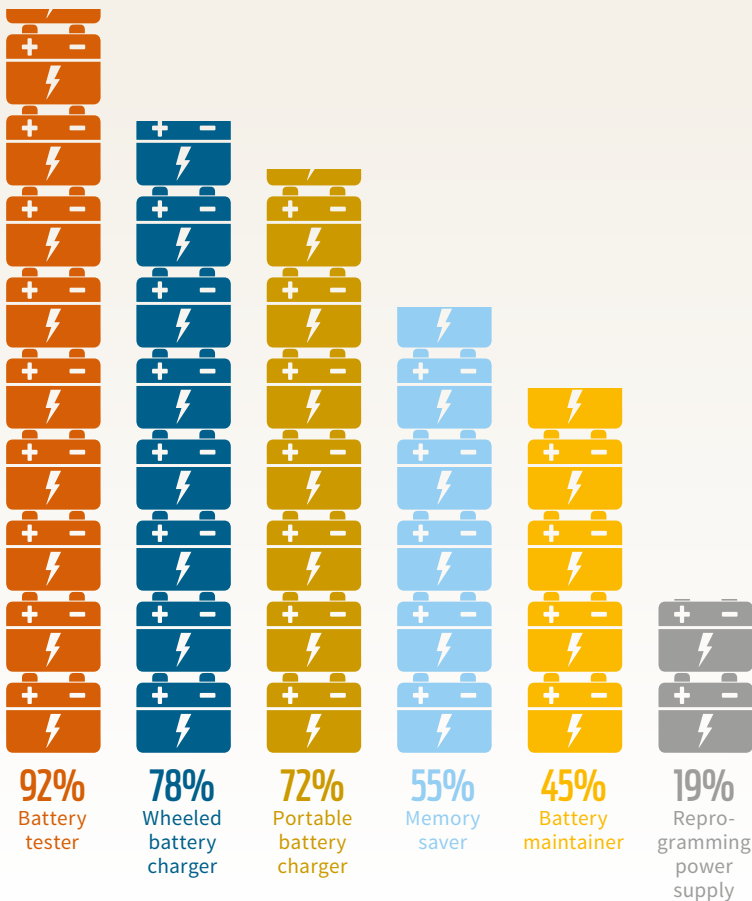
Nearly **one third** of respondents have used a shop tool that utilizes a smartphone.

👍 **33%**  
**YES**





## What type of battery service equipment do you own?



## Do you own a smart battery charger?

**YES**  
49%

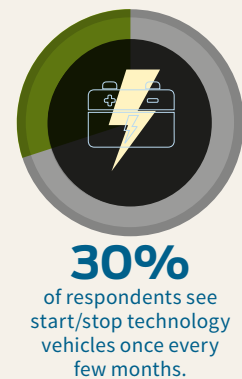
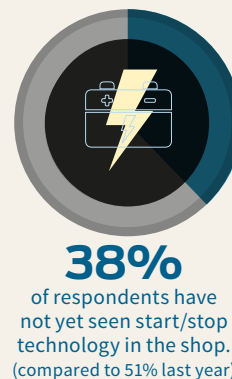
**NO**  
28%

13%

No, but I plan on purchasing a smart battery charger in the next 12 months.

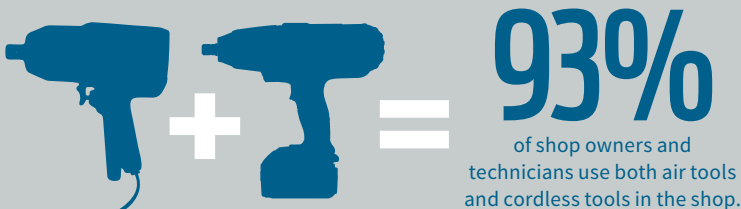
There has been a **19 percent** increase year-over-year of shops who say they own a smart battery charger.

## Start/stop technology continues to be more relevant in shops...

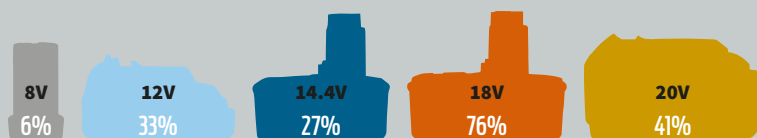


## CORDLESS & AIR TOOLS

### Do you use air tools or cordless tools?

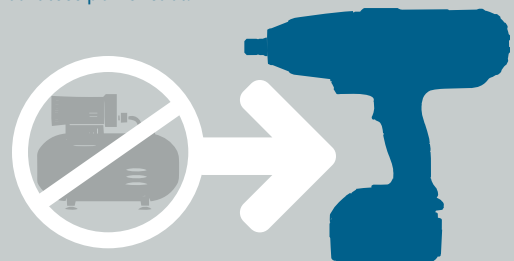


### What voltage of cordless tools have you purchased?



## The adoption of the cordless tools technology continues...

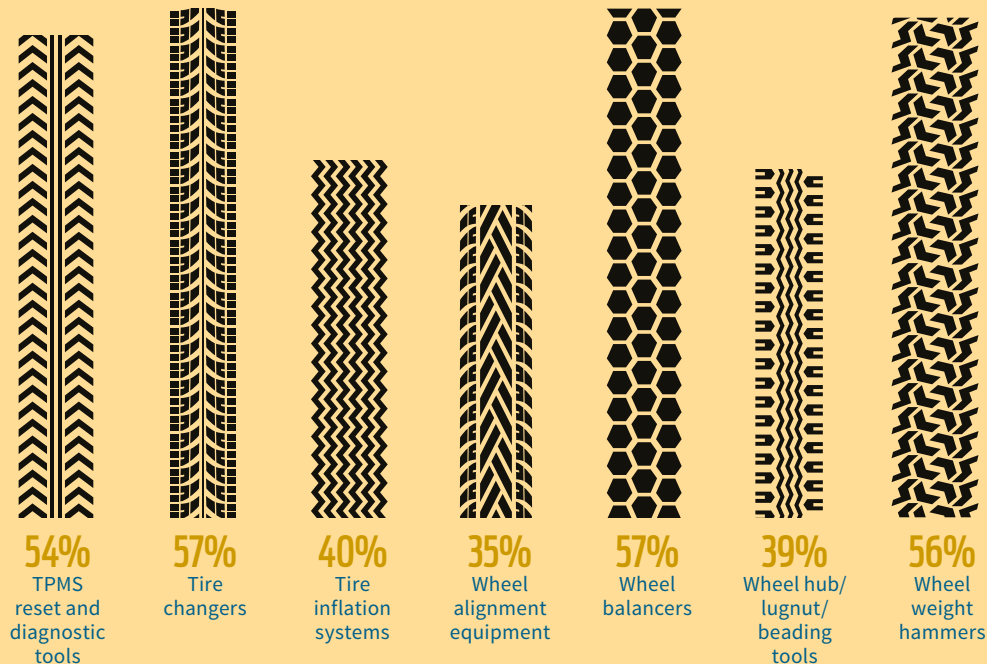
More than **40 percent** of respondents say they have replaced a pneumatic tool with a cordless power tool.



## TIRE & WHEEL SERVICE

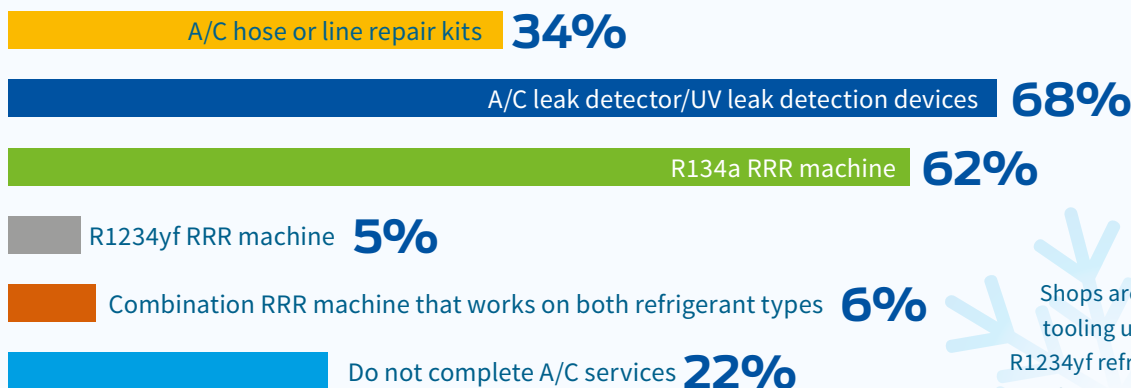
Of the shops that complete tire and wheel service, here's a breakdown of the tools and equipment they have in the shop:

Shops recognize TPMS service as one of the top 5 revenue opportunities.



## A/C SERVICE

What type of A/C tools and equipment do you own?



Shops are still tooling up for R1234yf refrigerant. Only **11 percent** currently have RRR machines to service vehicles with this refrigerant.

Of the shops that complete A/C service, the most popular A/C service tools and equipment include A/C hose or line repair kits (68%) and A/C leak detectors/UV leak detection devices (62%).



# MAXIMIZE YOUR PRODUCTIVITY.

## ESSENTIAL TOOLS FOR TPMS DIAGNOSTICS & RELEARN.



**MATCO  
TOOLS**

Top vehicle coverage meets pure TPMS functionality. Packed with essential features and designed with mid-sized tire shops in mind, the color interface of the MDMAXTPMS guides you when reading, replacing and servicing TPMS sensors.

## TIRE PRESSURE MAINTENANCE SIMPLIFIED.

Use the MDMAXTPMS with the MDMAX2A Diagnostics scan tool tablet to reset the TPMS ECU. Alone, the MDMAXTPMS can perform manual, auto and indirect relearns. When combined with the MDMAX2A, it can also perform OBD direct relearns. The MDMAXTPMS can read the most popular programmable TPMS sensor data and is frequently updated with new features and up-to-date vehicle and sensor coverage.

### MAXTPMS

TPMS SENSOR  
READING & CREATION

Part # MDMAXTPMS



### MAXIMUS 2.0

TPMS SYSTEM  
RESET & DIAGNOSTICS

Part # MDMAX2A



**USE THE MDMAXTPMS WITH THE MDMAX2A FOR MAXIMUM FUNCTIONALITY.**

#### MDMAXTPMS

- Easy to operate with icon based interface and a bright color display
- Activates and reads TPMS sensors of all light vehicle brands globally
- Programs all leading universal aftermarket sensors
- Displays all sensor data in seconds: ID, tire pressure, tire temperature, battery status, etc.

#### MDMAX2A

- One-click commonly used resets, including TPMS reset, brake reset, oil light reset, SAS reset, battery reset, electronic throttle relearn and more
- Ultra-fast graphing with full-color touchscreen
- Immediate bi-directional access to all available controllers for trouble codes, live data, actuations and more

**Enter 125 at "e-inquiry" on [VehicleServicePros.com](http://VehicleServicePros.com)**

See your Matco Tools distributor for more information



**DIAGNOSTICS SUPPORT LINE | 877.853.3738 | [www.matcotools.com](http://www.matcotools.com)**

© 2017 Matco Tools. All Rights Reserved. Matco Tools® and their respective logos are trademarks or registered trademarks of NMTC in the United States and in other countries

## [Training]

Understanding how to use a tool or piece of equipment, and its relationship to the overall diagnosis and repair of a vehicle, is an integral part of a technician's job. This section shows details on the most popular types of technician training, the optimal time and day for technician training, specific tool categories where more training is needed, and more.

### Does training have an effect on which tools you purchase?



**46%**



**14%**

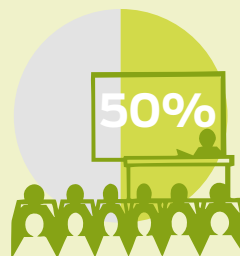


**40%**

### What type of training have you participated in?



Website/online



Classroom



Manuals

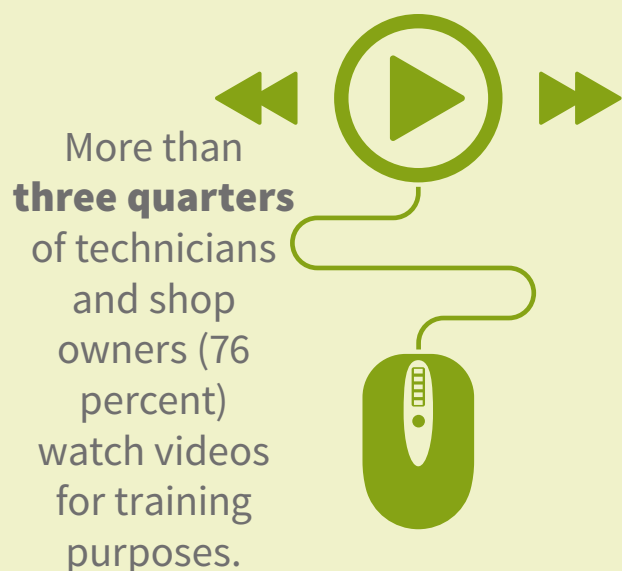


Trade Magazines

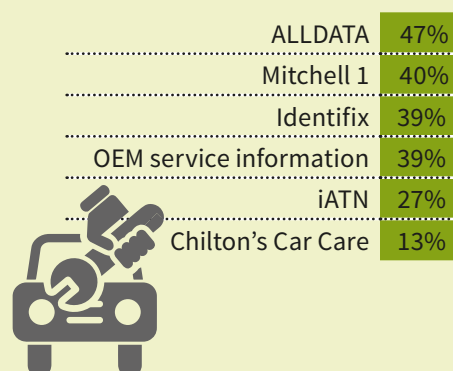


Tradeshow

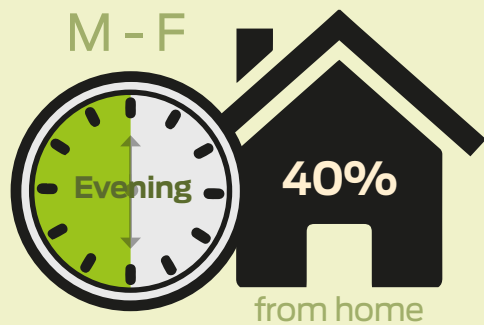
### How often do you use YouTube or other videos for training or diagnostic/repair information?



### What type of repair service information do you use?

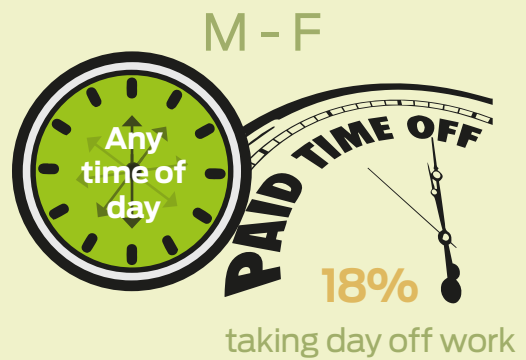
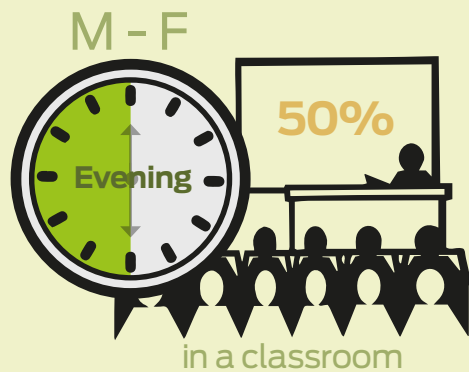
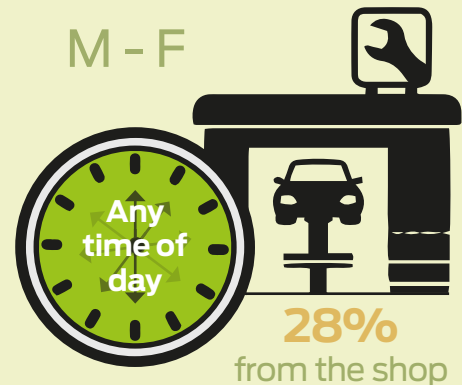






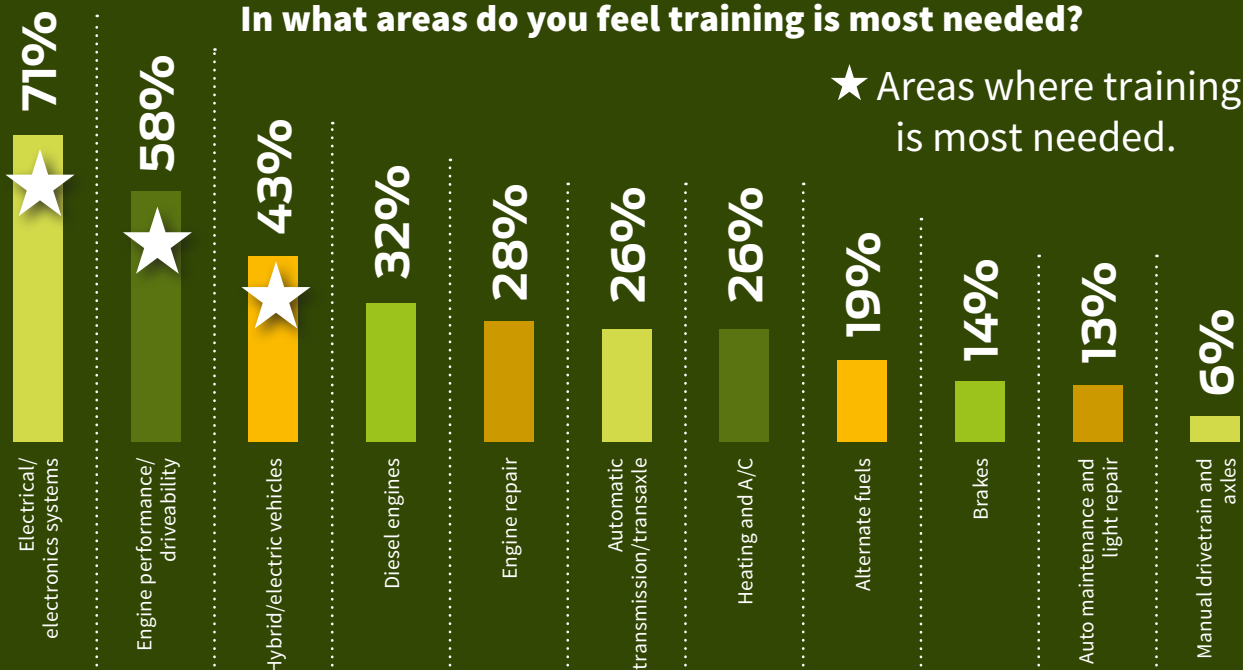
**What's the best time of day for technician training?**

According to shops, the best time for training is **weekday evenings** in a classroom setting.



**In what areas do you feel training is most needed?**

★ Areas where training is most needed.



# Category Spotlight



## CAN BE USED WITH ALL REFRIGERANTS

The **Mastercool Refrigerant Recovery Machine**, No. 69360, offers an oil separation module, filter dryer, sight glass, a double-piston oil-less compressor, safety high-pressure switch, large volume recovery rate and can be used with all refrigerants including R-410a. The injection-molded, high-density polyethylene case offers maximum durability and the front cover has bumper guards built in to reduce damage to the control knobs. The No. 69360 weighs 28.3 lbs and is 18" long by 10" wide by 14" high.

**Circle 126 on card, or enter at "e-inquiry" on VehicleServicePros.com**

## LEAK DETECTION FOR HIGH-PRESSURE SYSTEMS

The **Motorvac Cool Smoke HP**, No. 500-0150, addresses the emerging need for leak detection in forced induction and other high-pressure systems. This tool's proprietary technology requires no heat source to generate dense, UV dye-enhanced vapor from 3 psi to 60 psi. This tool offers a 3.5" color LCD display, full digital controls and more. The Bluetooth capability and a companion app allow the Cool Smoke HP to be controlled via a mobile device. The Cool Smoke HP also includes a turbo adapter kit and both bright white and true UV leak detection lights for full functionality right out of the box.

**Circle 127 on card, or enter at "e-inquiry" on VehicleServicePros.com**



## MEETS SAE J2843 REQUIREMENTS

The **Robinair 1234YF A/C Service Machine**, No. AC1234-6, meets SAE J2843 requirements for recovering, recycling and recharging vehicle A/C systems that use R-1234yf refrigerant. The fully automatic machine comes with an integrated refrigerant identifier that samples the refrigerant in the vehicle's A/C system prior to recovery. It can service both standard and hybrid vehicle A/C systems. The machine has a 95 percent recovery efficiency, a charge accuracy within +/- 0.5 oz, a system leak test to identify gross leaks in a system and a programmable vacuum operation. With a large graphical display, the machine uses an onboard printer to create vehicle service report slips.

**Circle 128 on card, or enter at "e-inquiry" on VehicleServicePros.com**



## FITS IN POCKETS FOR ACCESSIBILITY

The **OEM Automotive Tools Ultra-Violet Light Pen**, No. 24610, is used to help find leaks in A/C systems. The LED produces a high-intensity, ultraviolet light to detect fluorescent dyes. The Ultra-Violet Light Pen fits easily into a user's pocket. It is made of lightweight aluminum with a pocket clip for convenience and accessibility. This light features a high-impact lens to resist breakage, a one-hand push on/off button, 4.5 hours maximum run-time and is water resistant. It comes with two AAA Duralast batteries.

**Circle 129 on card, or enter at "e-inquiry" on VehicleServicePros.com**



## SERVICES CHRYSLER LH SERIES AND FORD VEHICLES

The **Lisle Scissor Disc A/C and Fuel Line Spring Lock**, No. 63730, releases four sizes of spring lock couplings on A/C and fuel lines on many Chrysler LH Series and Ford vehicles. The tool fits spring lock sizes A-3/4", B-5/8", C-1/2" and D-3/8".

**Circle 130 on card, or enter at "e-inquiry" on VehicleServicePros.com**



A/C SERVICE AND REPAIR WORK



## FIND AND PERMANENTLY STOP A/C LEAKS

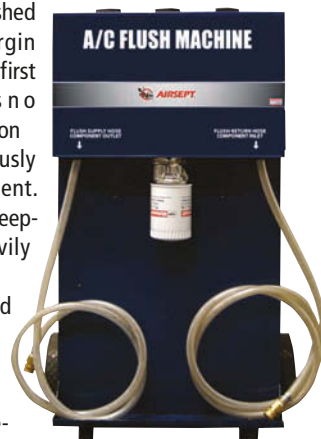
The **UVview LeakGuard OneShot**, No. 480500, is an A/C supplement that leverages the company's LeakGuard technology to find and permanently stop A/C leaks as they form. Includes a dose of A/C Extender dye fluoresces leaks and an additive package that protects and extends the life of the compressor, its components and the oil. Also, 2 oz of R-134a refrigerant tops off the system with refrigerant lost to leaks. This product will not harm the A/C system or recovery equipment, according to the company.

**Circle 131 on card, or enter at "e-inquiry" on VehicleServicePros.com**

## DUAL-TANK DESIGN PREVENTS CROSS-CONTAMINATION

The **AirSept A/C Flush Machine** features a dual-tank design that ensures each component in the system receives fresh, contaminant-free solution for its initial flush pass. Each A/C system component is flushed using only virgin solution from the first tank, so there is no cross-contamination from the previously flushed component. Technicians can deep-clean any heavily contaminated components, and the closed-loop flush meets A/C component warranty requirements and works with standard OE-fit connectors. The machine, capable of a 15-minute flush and 30-minute drying, has an air purge mode that can be used to check for component leaks prior to flushing. Additionally, a built-in two-stage filter removes moisture and particulates from the shop compressed air supply.

**Circle 132 on card, or enter at "e-inquiry" on VehicleServicePros.com**







## SERVICE R-1234YF REFRIGERANT SAFELY

The **Mahle ArcticPRO ACX1280 machine** is designed to help shops service R-1234yf refrigerant worldwide in a competent, efficient and safe manner. The ACX1280 is certified to meet all applicable performance and safety standards in the stringent SAE J2843 standard. The ACX1280 features fully automatic servicing to ensure easy, time-saving and precise service on R-1234yf air conditioning systems in vehicles. The machine is distinguished from its competitors with the option to purchase it with either an internal or external refrigerant identifier system. With easy access for service and maintenance tasks, the ACX1280 provides technicians with maximum uptime and faster service support.

**Circle 133 on card, or enter at "e-inquiry" on VehicleServicePros.com**



## FULL 1HP MOTOR

The **JB Industries Dual Piston Refrigerant Recovery Unit, No. F6-DP**, features a full 1hp motor, dual-piston compressor and high efficiency micro-channel condenser to recover refrigerant quickly. The device offers a micro-channel condenser as well as two-valve operation, and it is self-purging without the need to change hoses. The over-sized cooling fan dissipates heat, and the heavy duty handle provides a comfortable rubber grip. The unit is backed by a three-year OTC warranty.

**Circle 135 on card, or enter at "e-inquiry" on VehicleServicePros.com**

## READS IN FAHRENHEIT AND CELSIUS

The **Omega A/C Diagnostic Tool, No. 41-11585**, provides accurate temperature differences after any A/C repair, according to the company, and offers fast and accurate temperature readings in difficult-to-reach areas with the flexible direct contact thermocouples. The A/C Diagnostic Tool identifies internal restrictions on condensers and poor air flow across the condenser. It verifies evaporator flooding levels on the orifice tube system, expansion valve performance and receiver drier refrigerant flow. This tool offers a detailed temperature and diagnostic chart, is battery operated and reads in both Fahrenheit and Celsius.

**Circle 134 on card, or enter at "e-inquiry" on VehicleServicePros.com**



## GREASY HANDS DOWN, THE FASTEST, MOST PORTABLE A/C RECOVERY UNIT.

INTRODUCING THE YELLOW JACKET REFRIGERANT MANAGEMENT SYSTEM AUTOMATIC FOR R-134A AND R-1234YF WITH PORTABLE TABLET



### YELLOW JACKET REFRIGERANT RECOVERY SYSTEM FEATURES:

- Portable tablet enables remote troubleshooting/diagnostics
- 30% faster than the competition

- R-134a easily converts R-1234yf with kit
- Colorful, easy-to-use tablet interface
- Made-in-America durability



LEARN MORE AT  
[YELLOWJACKET.COM](http://YELLOWJACKET.COM)

**MADE IN THE U.S.A.**

**YJ YELLOW JACKET**

**Circle 136 on card, or enter at "e-inquiry" on VehicleServicePros.com**

# Category Spotlight

A/C Service and Repair Work

## WITH AN EZ-JECT A/C DYE INJECTOR

The **Tracerline EZ-Ject A/C and Fluid Kit**, No. TP-8617, features an OPTI-PRO cordless, "true UV" LED leak detection flashlight; an EZ-Ject universal, co-solvent free, multi-dose A/C dye cartridge (No. TP-9870) that services up to 14 vehicles; a 1-oz bottle of Dye-Lite All-In-One oil dye (No. TP-3405) compatible with all oil-based fluid systems, a 1-oz bottle of Dye-Lite (No. TP-3900) water-based dye for coolant leaks; an EZ-Ject A/C dye injector with hose and coupler; and fluorescence-enhancing glasses. All of the tools come packed in a carrying case.

Circle 137 on card, or enter at "e-inquiry" on VehicleServicePros.com



## THERMOMETER DOUBLES AS A PICKUP TOOL

The **Snap-on Multi-Functional Thermometer**, No. **TEMP100**, measures temperatures from -58 degrees F to 400 degrees F and features a magnetic tipped protective sleeve that doubles as a pickup tool. The built-in magnetic pocket clip keeps the TEMP100 handy and offers the ability to mount to ferrous surfaces. The easy-to-read LCD screen displays both Fahrenheit and Celsius and has a "data hold" feature to maintain information. The narrow tip shaft provides faster, more accurate readings than thicker shaft units, according to the company, to verify HVAC system temps and check airflow vent temps.



## EFFECTIVELY FIND AND PERMANENTLY STOP A/C LEAKS

The **CPS Automotive LeakGuard OneShot A/C supplement** leverages the company's LeakGuard technology to effectively find and permanently stop A/C leaks as they form. An included dose of A/C ExtenDye fluoresces leaks and includes an enhanced additive package that protects and extends the life of the compressor, its components and the oil. The cartridges work with the company's Spotgun Jr. injection system. In addition, they will not harm the A/C system or recovery equipment, says the company. Available are the LeakGuard OneShot Cartridge (No. 480501), the LeakGuard OneShot Cartridge Winged 1 oz (No. 480501EU), the LeakGuard OneShot Injection Kit (No. 480550) and the LeakGuard OneShot Winged Injection Kit (No. 480550E).

Circle 139 on card, or enter at "e-inquiry" on VehicleServicePros.com

## Are you ready for R-1234yf?



# We are!



## Neutronics Refrigerant Analysis

1 (610) 524 - 8800

www.refrigerantid.com

Circle 138 on card, or enter at "e-inquiry" on VehicleServicePros.com

## THREE SIZES OF BOTTLES AVAILABLE

The **Bright Solutions Stay-Brite Universal A/C Dye**, Nos. 117073, 117074 and 117075, for the company's A/C Detective injection system, is available in three sizes of bottles for 16, 32 or 64 applications. The dye can be injected even with system pressures up to 150 psi. The dye is SAE certified and OEM approved. All three sizes come with dye-installed service stickers.

Circle 140 on card, or enter at "e-inquiry" on VehicleServicePros.com

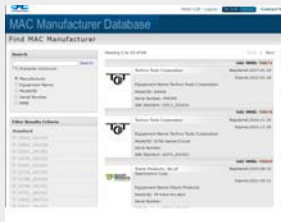






More from this category online **VEHICLESERVICEPROS**.COM

## TECH TIP



### CONFIRM SAE EQUIPMENT COMPLIANCE WITH A CLICK OR TWO

The arrival of R-1234yf in the automotive world generated several new SAE standards intended to support the use and servicing of this new fluid. To read the full article, visit:

[VEHICLESERVICEPROS.COM/20851676](http://VEHICLESERVICEPROS.COM/20851676)

Information provided by Neutronics Inc.

## ASK THE EXPERT



### HOW DO YOU PREVENT CONTAMINATION TO A/C EQUIPMENT?

**A:** Utilizing a refrigerant identification tool is highly recommended and required on some A/C models. The prevention of contamination to your machine is imperative. Refrigerant identification tool options range from external, hand-held units to internal/embedded options included in the A/C equipment. To read the full article, visit:

[VEHICLESERVICEPROS.COM/12175323](http://VEHICLESERVICEPROS.COM/12175323)

Information provided by MAHLE Service Solutions



## YELLOW JACKET MANTOOTH WIRELESS DIGITAL P/T GAUGE

The **Yellow Jacket Mantoath Wireless Digital P/T Gauge** uses a wireless connection to provide actual pressures, temperatures, superheat and subcooling. The gauge is available in either a single package, with one pressure/temperature module with boot, a temperature probe clamp, a U SB charging cable and the ManTooth app, or a dual package, which offers a second pressure sensor and clamp tethered to the main unit.

Circle 141 on card, or enter at "e-inquiry" on [VehicleServicePros.com](http://VehicleServicePros.com)



To watch a video demo of this product, go to: [VehicleServicePros.com/12210149](http://VehicleServicePros.com/12210149)

**Call Kaylee Kidd**  
**direct at: (920) 568-8362**

Toll Free: (800) 547-7377 ext. 1362 • Fax: (866) 717-0902

Email: [kkidd@southcomm.com](mailto:kkidd@southcomm.com)

**Premium J2534 Tool**

**d-briDGe PRO**

DIAGNOSTICS  
REPROGRAMMING

Made in the U.S.A.

**DG TECHNOLOGIES: Vehicle Network Tools**  
248.888.2000 | [www.dgtech.com](http://www.dgtech.com)

The d-briDGe PRO is a one solution tool to connect with a wide variety of OEM software applications to provide reprogramming and diagnostics to essentially all J2534 compliant Domestic, Asian and European vehicles.

**PREMIUM POLISHING & CARE PRODUCTS**

For more information on the complete FLITZ product line as well as helpful How To Video Tips please go to [www.flitz.com](http://www.flitz.com)

**FLITZ** 1-800-558-8611

## Marketplace



U. S. MANUFACTURER OF  
INNOVATIVE TOOLS & EQUIPMENT

845-679-4500  
[www.ipatools.com](http://www.ipatools.com)

### #8150 4.5" DIAMOND GRINDING WHEEL

**Lasts a Minimum of 20X Longer than Traditional Grinding Wheels**

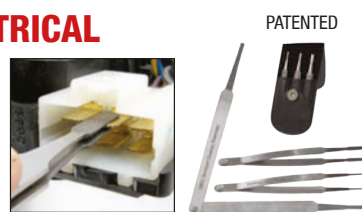
- Cleaner and faster cut
- Low sparks, odor and debris



### #8040 DIAMOND-TIP ELECTRICAL TERMINAL CLEANERS

**For Electrical Flat (Spade) Type Pin Connectors**

- Highly durable with fine abrasive coating
- Pivoting-handle design for added versatility



### End Greasing Frustration

**Grease goes in not on, the machine!**



(603) 795-2298

Email: [sales@locknlube.com](mailto:sales@locknlube.com)  
[www.locknlube.com](http://www.locknlube.com)

**Dealer Inquiries Welcome**

## WE WANT YOUR HAND TOOL IDEAS!

- LTI Tools has an awards and royalty program for your new hand tool ideas.
- We offer you international distribution.
- If you have a new product or idea, please call, write or e-mail LTI Tools.

Lock Technology, Inc.  
Toll Free 800-421-7241  
[www.ltitools.com](http://www.ltitools.com)  
[ltitools@ltitools.com](mailto:ltitools@ltitools.com)



# Big-Time Boxes

READERS OFFER A PROUD LOOK AT THEIR AWESOME TOOL STORAGE SYSTEMS.

## The bolder, the better

Dual side cabinets, statement color and built-in radio draw attention to this box

By Vesna Brajkovic,  
Assistant Editor

Once Danny White, a senior technician at Perry Subaru in Norfolk, Virginia, had his Mac Tools toolbox put together, he showed his wife who sarcastically said, "Do you think you got a big enough box?"

White thinks it's just enough. Although, he says the pictures barely do it justice compared to seeing it in person.

The black and blue Tech Series is big and bold, with a stainless steel work top, two matching side cabinets and a hutch with built-in radio and speakers.

White has had his toolbox for about two years. He started with the main box, which he purchased from his Mac Tools distributor. He then put in an order with his distributor for the two side cabinets and the hutch a year-and-a-half later.

One of White's favorite features is the built-in radio with speakers. Two speakers are hidden inside the top of the hutch, so they don't take up space but still provide quality sound.

The side cabinets, or lockers, have adjustable shelving, making it ideal for customization, White says. He uses them to store tablets, scopes, meters and other more expensive equipment so he can easily keep them locked away while not in the shop. He also has enough room to hang up hats and jackets.

The bottom drawers of the main box hold tools like pressure testers and other electronics, while the top drawers hold basic hand tools, like pliers. A notable fea-



OWNER:

**Danny R. White**

Perry Subaru  
Norfolk, Virginia



▲ Two speakers are hidden inside the top of the hutch, so they don't take up space but still provide quality sound for the built-in radio.

ture is one of the bottom drawers which has a strip of power outlets inside it and doubles as a utility box. The toolbox is plugged in, allowing White to keep his equipment charged, and the drawer helps keep the tools plugged in while being stored away.

Keeping the stainless steel worktop, along with his entire box, clutter-free and clean is important to White. The worktop has only some easy-to-reach tools hanging from pegs on the backboard, and occasionally he has his Launch Tech Pad II scan tool out on top.



▲ Danny White keeps his Mac Tools Tech Series toolbox spotless and clutter-free. The side lockers have adjustable shelving making it ideal for customized tool storage.

White says if you saw the box, you might think it's brand new with the way he takes care of it. But, with what he paid for it, he says, he better treat it right.

White completely paid off the toolbox about four months ago, but still has a few updates in mind. He said he may want to install a magnetized light inside the central box to help illuminate the work area on overcast days, and purchase a bookcase for the top of the box to store manuals and other resources. **PTEN**



Want to show off YOUR Big-Time Box?  
For more information, email  
[Editor@VehicleServicePros.com](mailto:Editor@VehicleServicePros.com).



# Homak®

## PRO SERIES

The Homak Pro Series Toolbox Combo provides rugged tool storage for whatever you can throw at it.

**Red, Black, or Blue versions,  
Available in 27" & 41" models.**

### PRO SERIES FEATURES:

- Full Extension Gas Struts
- 5"x 2" Roller Bearing Casters
- Full-Length Aluminum Drawer Pulls
- HMC High Security Tubular Locking System
- EVA Drawer Liners & Top Mat Included
- Heavy-Duty Lift Handles
- Locking Lid Hinges
- 5 Additional Accessories Available

GLOBAL  
**KNOWN &  
PROFESSIONALLY  
TRUSTED**  
*Since 1947*

Circle 142 on card, or enter at "e-inquiry" on [VehicleServicePros.com](http://VehicleServicePros.com)

**800-874-6625 | [www.homak.com](http://www.homak.com)**



VERUS<sup>®</sup> Edge

## VERUS<sup>®</sup> EDGE FULLY LOADED

Introducing the new, fourth-generation VERUS<sup>®</sup> Edge. Built-in OEM TSBs, your favorite web resources and plenty of room to save all the data and applications you want. Boot-up from cold in just a minute and from Ready Mode in an incredible five seconds. A capacitive touchscreen that's sensitive to your every gesture. All in a slim, compact housing with a lot less bulk — and a lot more style.

*Diagnostics, repair, management and beyond.*



*For more vehicle coverage, expert tips and industry knowledge than any other full-featured diagnostic platform on the market, talk to your Snap-on Representative or visit [diagnostics.snapon.com/VERUSedge](http://diagnostics.snapon.com/VERUSedge).*

Snap-on is a trademark, registered in the United States and other countries, of Snap-on Incorporated. All rights reserved. ©Snap-on Incorporated 2017.

Circle 143 on card, or enter at "e-inquiry" on [VehicleServicePros.com](http://VehicleServicePros.com)